

Capitol Hill Retail & Office

1205 E Pike Street, Seattle



WEST EDGE
CORPORATE REAL ESTATE, LLC

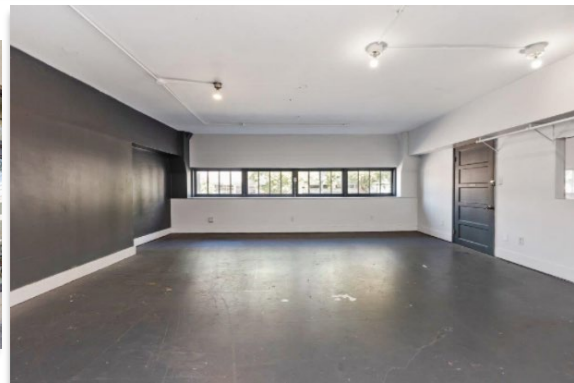


Building Details

Located at the center of Capitol Hill's most vibrant corridor, 1205 E Pike is a character rich building, offering a blend of historic charm and modern aesthetic. Spaces are unique, creative, full of natural light, and ready for your business's personal touch.

Available Space

- 2,100 RSF : RETAIL / CREATIVE OFFICE— street level along E Pike St. Large windows, fully improved, great natural light and street visibility/access. Private bathrooms. Interconnected to a second-floor creative office or studio space. Open layout with great natural light.
- Rental Rate: \$25/RSF NNN (\$7.63/RSF)



Nate White
nate@westedgecre.com
206-240-1060



WEST EDGE
CORPORATE REAL ESTATE, LLC

Capitol Hill Retail & Office

1205 E Pike Street, Seattle



WEST EDGE
CORPORATE REAL ESTATE, LLC

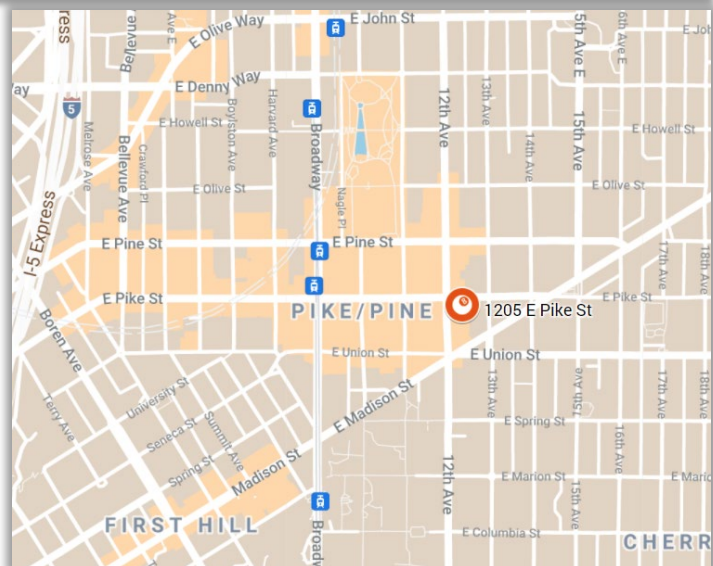


Location

- Blocks from downtown, minutes from Interstate 5, HWY 99, Link Light Rail and multiple Metro bus stops.
- This location boasts a multitude of restaurants, bars, coffee shops, retail shops, entertainment venues, Cal Anderson Park. The area is a true walker's paradise!

Demographics

- 2021 Population: 2 mile, 196,193. 5 mile, 503,068
- Median Age: 2 mile, 37.1 years. 5 mile, 36.6 years
- Consumer Spending: 2 mile, \$3.6B. 5 mile, \$8.9B



Nate White
nate@westedgecre.com
206-240-1060



WEST EDGE
CORPORATE REAL ESTATE, LLC

Capitol Hill Retail & Office

1205 E Pike Street, Seattle

Available Space : 2,100 RSF – Retail & Creative Office

- Street level retail with frontage along E Pike St. Amazing location with heavy foot and vehicle traffic. The space is move-in ready and has oversized windows, providing tremendous retail presence. Space connects via an internal staircase to a second-floor creative office or studio space.



Capitol Hill Retail & Office

1205 E Pike Street, Seattle



Available Space : 2,100 RSF – Retail & Creative Office

- Interconnected to the first floor via an internal staircase is a unique second floor creative office or studio space. Open layout, natural light and move-in ready. Well located amongst coffee shops, restaurants, bars, mass transit and a numerous other amenities.



Nate White
nate@westedgecre.com
206-240-1060

