

# BRAND NEW CLASS A RETAIL | OFFICES SPACES

The Lofts at Maple & Main Retail | 102 W Main St Smithtown, NY 11787

**FOR LEASE**



Commercial



[elliimancommercial.com](http://elliimancommercial.com)



# EXECUTIVE SUMMARY



## The Lofts at Maple & Main | 102 W Main St Smithtown, NY 11787

Total Commercial Size:	15,000 SF	Lot Size:	3.62 Acres
Available Units:	Three (3)	Parking:	100 + Spaces
Available Square Feet	1,000 to 3,600 SF	Zoning:	CB
Traffic Counts:	32,600 Cars per day	Lease Rate:	Price On Request

For pricing and more information, contacting Exclusive Listing Agents

### Property Overview

Discover The Lofts at Maple & Main, Luxury Mixed-Use Retail & Residential with Three Commercial Spaces Available for Lease. The Lofts are an exceptional new development located in the heart of Smithtown’s Village of the Branch. This premier property offers a rare opportunity to lease high-end retail or office space in a vibrant, upscale setting amongst 71 Luxury 1 and 2-bedroom apartments.

Currently available are three distinct spaces: one 1,000 square foot unit, and two units totaling 3,600 square feet, which may be divided to suit your needs. Whether you're launching a boutique storefront or establishing a polished office presence, this property offers the flexibility and visibility to support your success.

Join a curated mix of successful neighbors including The Dirty Cheesecake, Blend Salon, and Beauty Bomb Aesthetics. This highly visible location benefits from tremendous frontage and exposure, with over 32,000 vehicles passing by each day—making it an ideal destination for retail or professional use. The property is just minutes from the Smithtown commuter rail and is surrounded by a thriving mix of local and national businesses. Its proximity to major roadways, Smith Haven Mall, and other key amenities ensures convenience for both customers and employees.

This is more than just a space—it’s a statement. With a dynamic demographic, prime visibility, and a location that blends charm with commerce, The Lofts at Maple & Main offers a unique opportunity to elevate your brand in one of Long Island’s most desirable communities.

Don’t miss your chance to bring exceptional exposure to your business in the heart of this vibrant town.

Exclusively represented by:

Michael G. Murphy

President | Commercial Division  
631.858.2460 Email: michael.murphy@elliman.com

Mike Lightcap

Licensed Real Estate Salesperson  
631.445.5756 Email: mike.lightcap@elliman.com





Maple Ave  
NEXT SIGNAL →

UP TO 2,600 SF  
**FOR LEASE**  
MICHAEL MURPHY  
MIKE LIGHTCAP  
631.858.2405

UP TO 3,600 SF  
**FOR LEASE**  
MICHAEL MURPHY  
MIKE LIGHTCAP  
631.858.2405



# COMPLETE HIGHLIGHTS

The Lofts at Maple & Main | 102 W Main St Smithtown, NY 11787



## Property Highlights

- The Lofts at Maple & Main is a brand-new luxury mixed-use development located in the heart of Smithtown's Village of the Branch.
- Three premium spaces are available, including a 1,000 SF unit and two units totaling 3,600 SF that can be divided to suit your needs. Each unit has a rear entry for easy access to the units for staff and deliveries,
- The property offers exceptional visibility with over 32,000 vehicles passing daily and prominent street frontage. The property features ample parking in a rear lot with easy access to the front stores through a convenient pass-through, along with all high-end finishes and a luxury feel throughout.
- It's conveniently located just minutes from the Smithtown commuter rail, major roadways, and the Smith Haven Mall.
- Surrounded by successful local and national businesses, this is a prime opportunity to elevate your brand in a thriving, high-end community.

*Exclusively represented by:*

**Michael G. Murphy**

President | Commercial Division  
631.858.2460 Email: michael.murphy@elliman.com

**Mike Lightcap**

Licensed Real Estate Salesperson  
631.445.5756 Email: mike.lightcap@elliman.com



# RETAILER MAP

The Lofts at Maple & Main | 102 W Main St Smithtown, NY 11787



Exclusively represented by:

**Michael G. Murphy**

President | Commercial Division  
631.858.2460 Email: michael.murphy@elliman.com

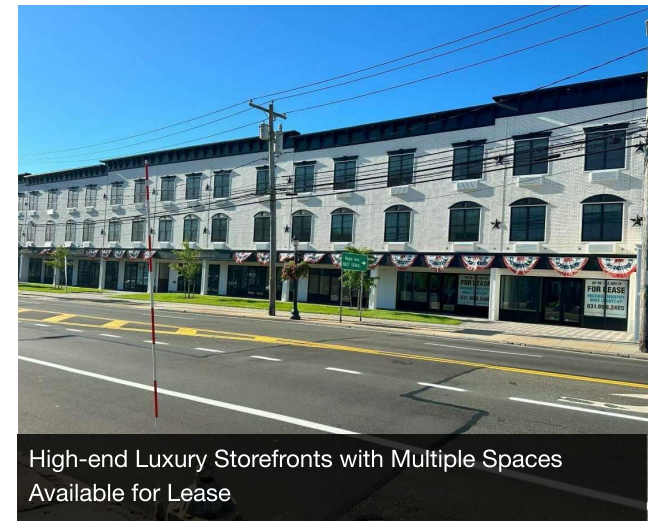
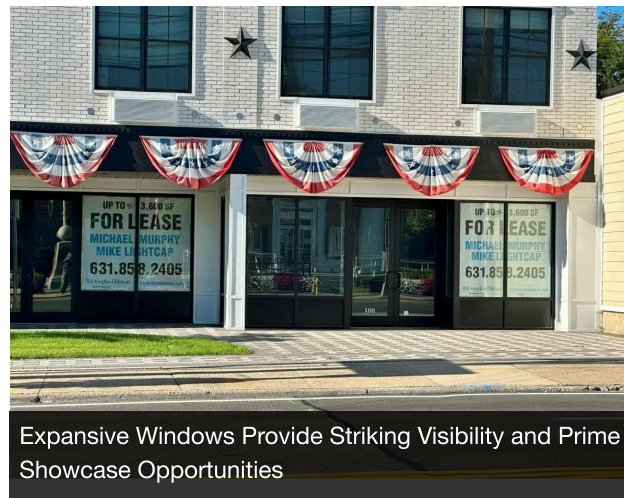
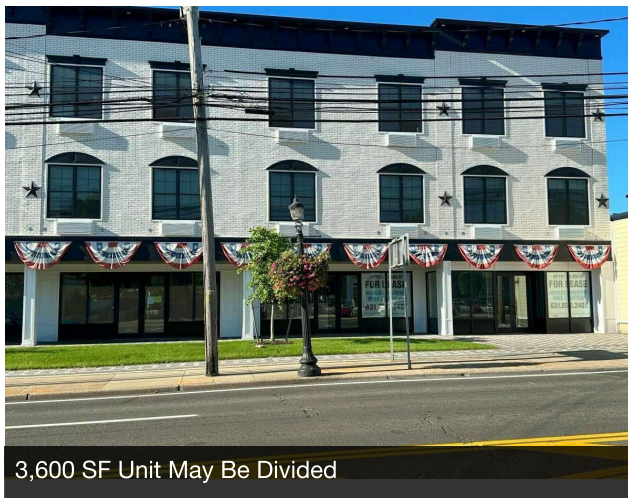
**Mike Lightcap**

Licensed Real Estate Salesperson  
631.445.5756 Email: mike.lightcap@elliman.com



# ADDITIONAL PHOTOS

The Lofts at Maple & Main | 102 W Main St Smithtown, NY 11787



*Exclusively represented by:*

**Michael G. Murphy**

President | Commercial Division  
631.858.2460 Email: michael.murphy@elliman.com

**Mike Lightcap**

Licensed Real Estate Salesperson  
631.445.5756 Email: mike.lightcap@elliman.com



# ADDITIONAL PHOTOS

The Lofts at Maple & Main | 102 W Main St Smithtown, NY 11787



Each Storefront Offers Rear Entry, Ideal for Employees or Deliveries



Ample Parking in Rear Lot with Plenty of ADA Approved Spaces



Nestled Amongst 1 and 2-bedroom Luxury Apartment Units



Incredible Opportunity in the Heart of Village of the Branch, Smithtown, NY

*Exclusively represented by:*

**Michael G. Murphy**

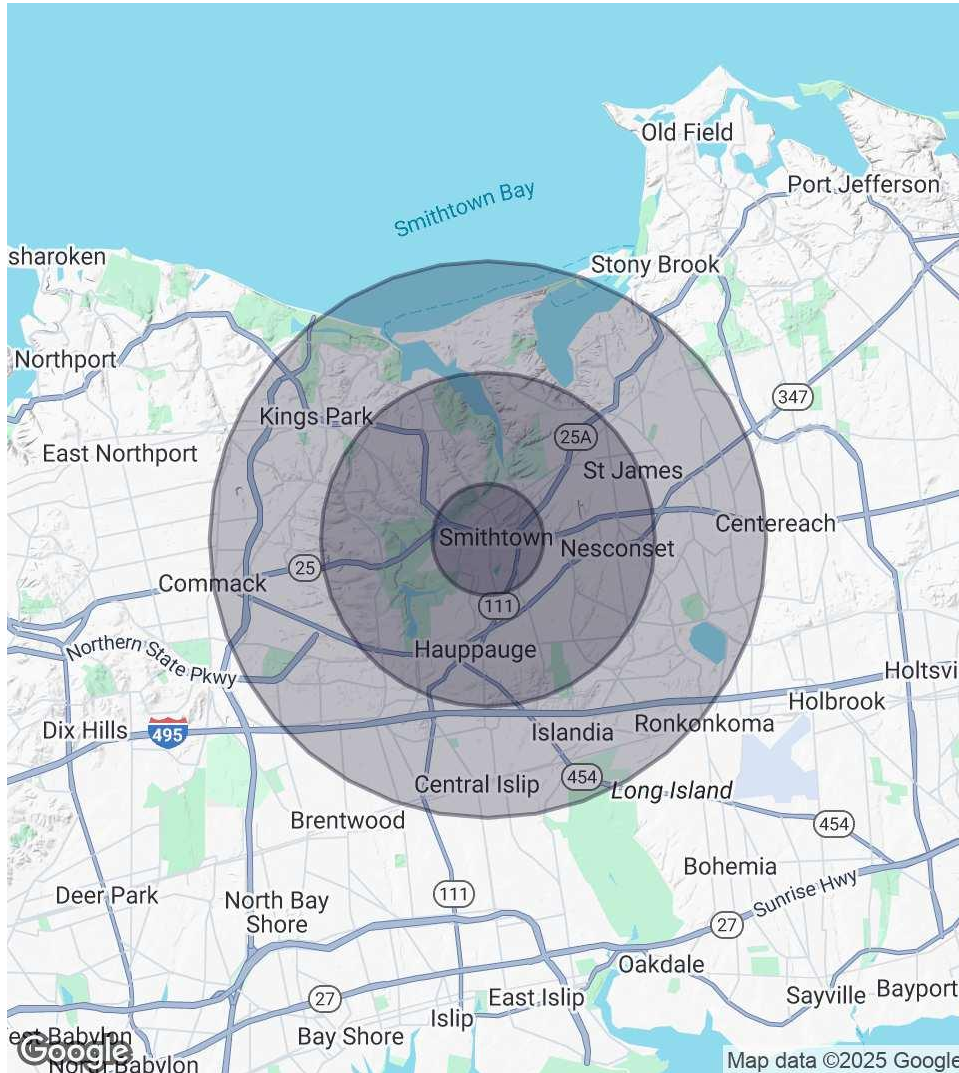
President | Commercial Division  
631.858.2460 Email: [michael.murphy@elliman.com](mailto:michael.murphy@elliman.com)

**Mike Lightcap**

Licensed Real Estate Salesperson  
631.445.5756 Email: [mike.lightcap@elliman.com](mailto:mike.lightcap@elliman.com)

# DEMOGRAPHICS MAP & REPORT

The Lofts at Maple & Main | 102 W Main St Smithtown, NY 11787



## 1 Mile Radius

### Population

6,586

### Households

2,248

### Average HH Income

\$235,278

## 3 Miles Radius

### Population

64,322

### Households

22,044

### Average HH Income

\$214,436

## 5 Miles Radius

### Population

190,025

### Households

62,150

### Average HH Income

\$187,928

Exclusively represented by:

**Michael G. Murphy**

President | Commercial Division

631.858.2460 Email: michael.murphy@elliman.com

**Mike Lightcap**

Licensed Real Estate Salesperson

631.445.5756 Email: mike.lightcap@elliman.com



The Lofts at Maple & Main | 102 W Main St Smithtown, NY 11787

## EXCLUSIVELY REPRESENTED BY:



**Michael G. Murphy**

President | Commercial Division

631.858.2460

Email: michael.murphy@elliman.com



**Mike Lightcap**

Licensed Real Estate Salesperson

631.445.5756

Email: mike.lightcap@elliman.com



550 Smithtown Bypass Suite 117  
Smithtown, NY 11787  
631.858.2405  
ellimancommercial.com

THE PROPERTY CONTAINED WITHIN THIS DOCUMENT IS BEING EXCLUSIVELY REPRESENTED BY DOUGLAS ELLIMAN REAL ESTATE COMMERCIAL DIVISION, 550 SMITHTOWN BYPASS STE. 117 SMITHTOWN, NY 11787 631.858.2405  
© 2023 DOUGLAS ELLIMAN COMMERCIAL OF LI, LLC. ALL MATERIAL PRESENTED HEREIN IS INTENDED FOR INFORMATION PURPOSES ONLY. WHILE THIS INFORMATION IS BELIEVED TO BE CORRECT, IT IS REPRESENTED SUBJECT TO ERRORS, OMISSIONS, CHANGES OR WITHDRAWAL WITHOUT NOTICE. ALL PROPERTY INFORMATION, INCLUDING, BUT NOT LIMITED TO SQUARE FOOTAGE, ROOM COUNT, ZONING IN THE LISTING SHOULD BE VERIFIED BY YOUR OWN ATTORNEY, ARCHITECT OR ZONING EXPERT. IF YOUR PROPERTY IS CURRENTLY LISTED WITH ANOTHER REAL ESTATE BROKER, PLEASE DISREGARD THIS OFFER. IT IS NOT OUR INTENTION TO SOLICIT THE OFFERINGS OF OTHER REAL ESTATE BROKERS. WE COOPERATE WITH THEM FULLY. EQUAL HOUSING OPPORTUNITY.





## **We Are Commercial Real Estate**

550 Smithtown Bypass Suite 117  
Smithtown, NY 11787  
631.858.2405  
ellimancommercial.com

Commercial real estate involves more than just property listings. To get the most effective results, you need to partner with a company that has a full complement of services and an in-depth team of professionals to help with all your needs. Douglas Elliman's team of commercial real estate experts is committed to unrivaled performance standards when working with tenants, investors, purchasers and owners. We represent all major property types including office, industrial, retail, apartment and land. We treat each assignment with commitment and focus, from a single transaction in a local market to national and multi-market assignments. We help negotiate contracts, coordinate construction and provide both property management as well as ongoing advisory service to satisfy your changing real estate needs. Our breadth of market knowledge, unprecedented network and use of innovative technology extend to all types of property transactions. For information on our services please contact us today.