



  
RIDGEWOOD  
P L A Z A

---

19026 RIDGEWOOD PARKWAY • SAN ANTONIO, TX 78259



WORTH  
& ASSOCIATES

## PROJECT FEATURES:

- 147,258 SQUARE FEET
- FOUR STORY CLASS A OFFICE BUILDING
- WORTH FITNESS CENTER
- ENERGY EFFICIENT MECHANICAL SYSTEMS
- 9.3 ACRE LAND SITE
- OVER 240 TREES PRESERVED ON-SITE
- 10' CEILINGS FOUND THROUGHOUT
- 663 PARKING SPACES (4.5/1000) LOCATED IN PARKING GARAGE AND SURFACE PARKING
- ADJACENT TO MUD CREEK HIKE AND BIKE TRAILS
- BUILDING SIGNAGE VISIBLE FROM HWY 281
- EXPRESS MARKET VENDING AREA
- OUTDOOR RECREATION AREA FEATURING PING PONG AND FOOSBALL TABLES, HORSESHOES AND SEATING
- 1ST FLOOR SHOWERS
- SOLAR COVERED CARPORTS
- EXCELLENT ACCESS TO REDLAND ROAD, SONTERRA BOULEVARD, HWY 281 AND LOOP 1604

210.805.3333

[www.ridgewoodofficeparksa.com](http://www.ridgewoodofficeparksa.com)





## AVAILABILITIES:

### • 1ST FLOOR

- Suite 106 - 1,443 SF  
(Move-In Ready)

[View Virtual Tour](#)  
[Click Here](#)

### • 3RD FLOOR

- Suite 300 - 9,290 SF
- Suite 311 - 10,342 SF

210.805.3333

[www.ridgewoodofficeparksa.com](http://www.ridgewoodofficeparksa.com)

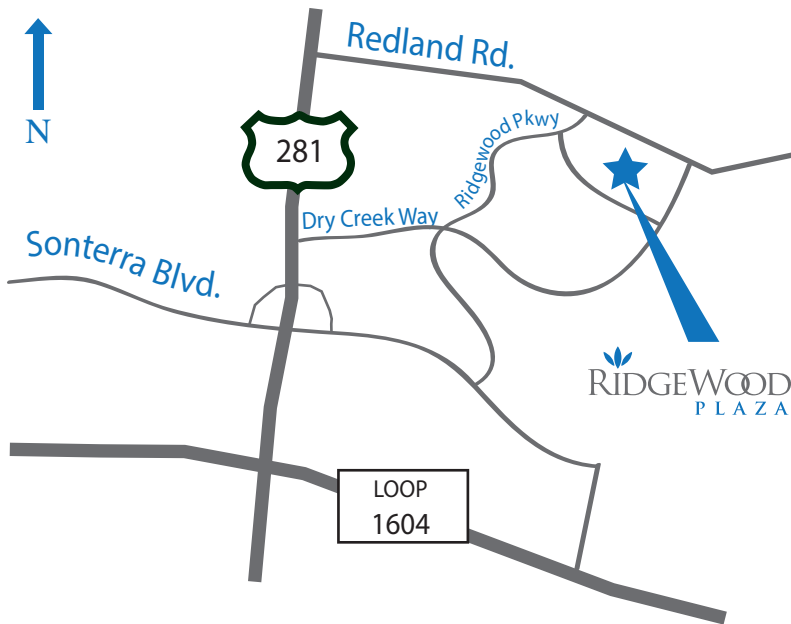
Parking Data  
273 Surface Spaces  
390 Garage Spaces  
663 Total Spaces ( 4.5/1000)





# RIDGEWOOD PLAZA

19026 RIDGEWOOD PARKWAY  
SAN ANTONIO, TX 78259



## LOCATION ANALYSIS:

- LOCATED AT THE CORNER OF REDLAND ROAD AND RIDGEWOOD PARKWAY JUST NORTH OF THE LOOP 1604 HWY 281 INTERSECTION
- A PART OF THE 122 ACRE MASTER PLANNED BUSINESS COMMUNITY OF RIDGEWOOD PARK
- LESS THAN 9 MILES FROM SAN ANTONIO INTERNATIONAL AIRPORT
- CLOSE TO EXECUTIVE HOUSING, EXCELLENT SCHOOLS, HOTELS, HOSPITALS AND PLENTY OF RETAIL, RESTAURANT AND ENTERTAINMENT AMENITIES

## LIFESTYLE:

With a number of advanced building design features, a location adjacent to Mud Creek Hike & Bike trail and Legacy Center; a 600,000 Square foot mixed-use lifestyle Center that includes a Dwell at Legacy, a 289 Apartment Community and other anchor tenants that include Lifetime Fitness, Best Buy, Main Event, Starbucks, McAllisters Deli and Genghish Grill, [RidgeWood Plaza](#) has been designed to provide an exclusive live, work, play lifestyle for the people who office there. Some of the features are:



- Adjacent to Mud Creek Trail
- 240 Trees preserved on-site
- 1st Floor Showers



- Abundance of Natural Light
- Express Market Vending Area
- Numerous Bike Racks



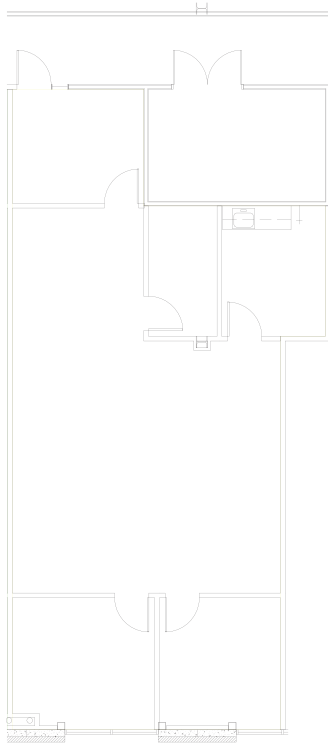
- Adjacent to Legacy Center
- Outdoor Picnic and Meeting Space
- Energy Efficient Mechanical Systems

210.805.3333

[www.ridgewoodofficeparksa.com](http://www.ridgewoodofficeparksa.com)



1ST FLOOR  
Suite 106  
1,443 SF Available



- Available Now
- Move-In Ready
- Class A Finishes
- Pre Wired for Voice and Data

[View Virtual Tour](#)  
[Click Here](#)

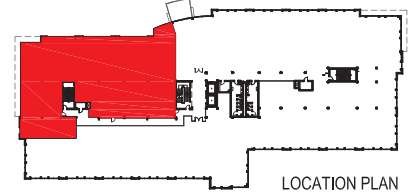


DIMENSIONS SHOWN ARE APPROXIMATE ONLY

**3RD FLOOR**  
**Suite 311**  
**10,342 SF Available**

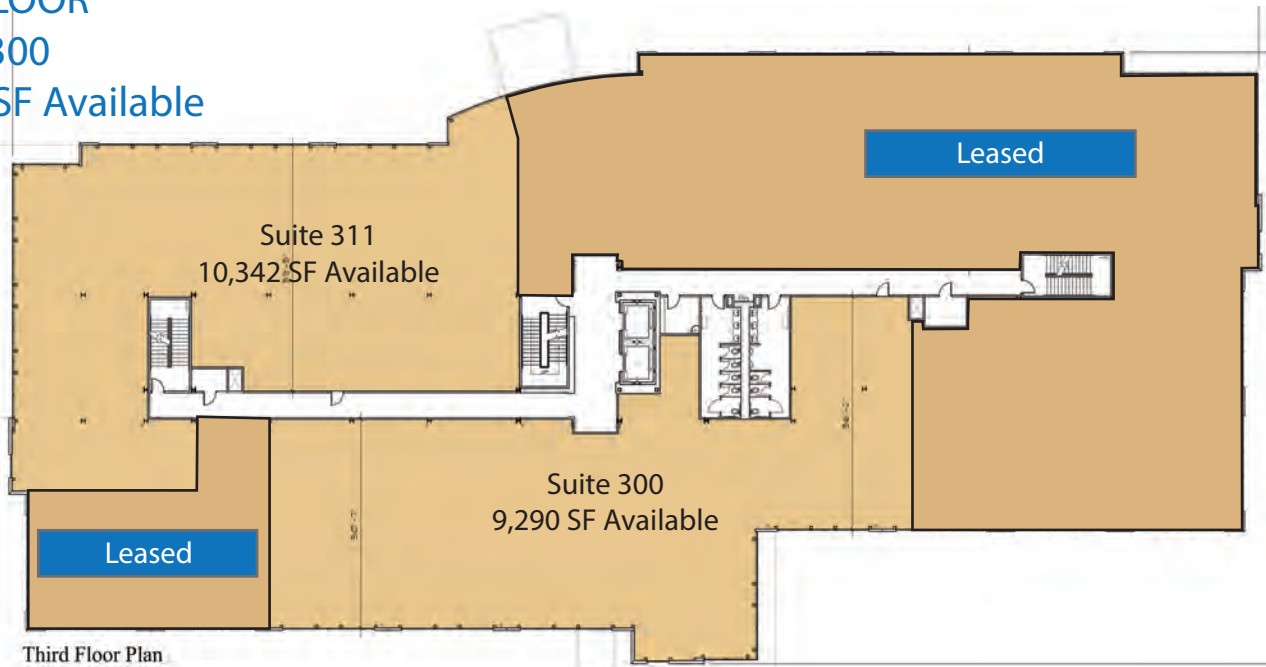


**Suite 311**  
**10,342 RSF**  
**Ridgewood Plaza**  
19026 Ridgewood Parkway  
San Antonio, Texas 78259

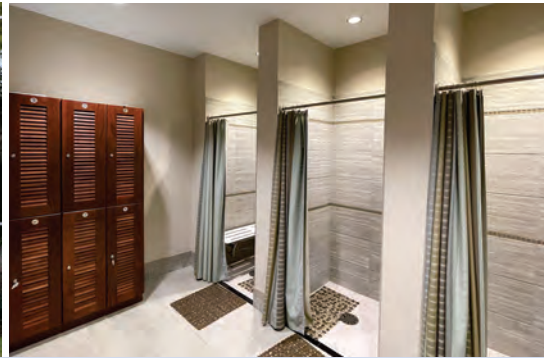


LOCATION PLAN

**3RD FLOOR**  
**Suite 300**  
**9,290 SF Available**



Third Floor Plan

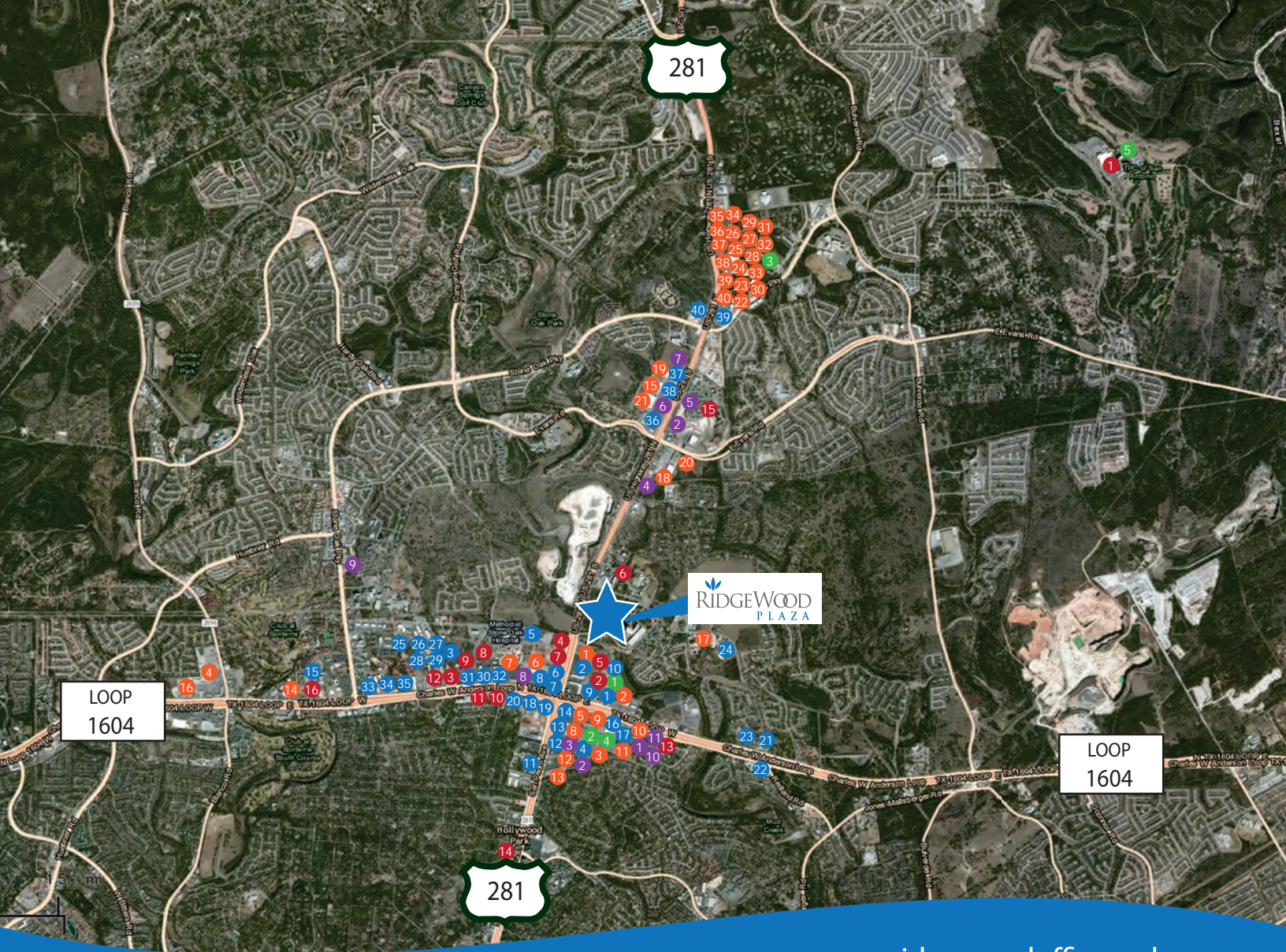


210.805.3333

[www.ridgewoodofficeparksa.com](http://www.ridgewoodofficeparksa.com)







210.805.3333

[www.ridgewoodofficeparksa.com](http://www.ridgewoodofficeparksa.com)

# RIDGEWOOD PLAZA

19026 RIDGEWOOD PARKWAY  
SAN ANTONIO, TX 78259

## AMENITY MAP:

### RESTAURANTS

- 1 Genghis Grill
- 2 Buffalo Wild Wings
- 3 Smashin Crab
- 4 Stout's Pizza
- 5 Pericos
- 6 Whataburger
- 7 Chick-Fil-A
- 8 Las Palapas
- 9 Starbucks
- 10 Subway
- 11 Red Lobster
- 12 Chili's
- 13 Chuy's
- 14 La Madeleine
- 15 Chama Gaucha
- 16 Pei Wei
- 17 Red Robin
- 18 IHOP
- 19 Bill Miller
- 20 Schlotzskys
- 21 Bourbon Street Cafe
- 22 El Chaparral
- 23 Shipley's DoNuts
- 24 La Hacienda De Los Barrios
- 25 Kumori
- 26 Merit Coffee
- 27 Salata
- 28 First Watch
- 29 Nothing Bundt Cake
- 30 Brick House
- 31 Gorditas Dona Tota
- 32 Jasons Deli
- 33 Sushi Zushi
- 34 Kirby's Steakhouse
- 35 Mellow Mushroom
- 36 Lupe Tortilla
- 37 Conroys Bar and Grill
- 38 Panda Express
- 39 Grimaldi's Pizzeria
- 40 Longhorn Steakhouse

### HOTELS

- 1 JW Marriot Resort
- 2 Home2 Suites
- 3 Drury Plaza Hotel
- 4 Hyatt Place
- 5 Courtyard Marriot
- 6 Holiday Inn
- 7 Best Western Plus
- 8 La Quinta Inn & Suites
- 9 Residence Inn
- 10 Fairfield Inn & Suites
- 11 Staybridge Suites
- 12 Drury Inn & Suites
- 13 Hampton Inn
- 14 Holiday Inn Express
- 15 Candlewood Suites
- 16 Homewood Suites

### RETAIL

- 1 Life Time Fitness
- 2 Best Buy
- 3 Office Max
- 4 Target
- 5 HEB
- 6 Wal Mart
- 7 Costco
- 8 Barnes & Nobles
- 9 Kohls
- 10 Academy Sports
- 11 Bed Bath & Beyond
- 12 Old Navy
- 13 Marshalls
- 14 Trader Joes
- 15 PetSmart
- 16 LA Fitness
- 17 Elite Crossfit
- 18 Home Depot
- 19 Half Price Books
- 20 Walgreens
- 21 Music and Arts
- 22 Loft
- 23 Ulta Beauty
- 24 Game Stop
- 25 Kirklands
- 26 Claire's
- 27 Eddie Bauer
- 28 White House Black Market
- 29 Bath & Body Works
- 30 Talbots
- 31 J-Jill
- 32 Torrid
- 33 Cycle Bar
- 34 Hobby Lobby
- 35 World Market
- 36 Homegoods
- 37 Learning Express
- 38 Francescas
- 39 Chicos
- 40 Apricot Lane

### BANKS

- 1 Wells Fargo
- 2 Bank of America
- 3 BBVA Compass
- 4 Broadway Bank
- 5 Bank of America
- 6 Chase Bank
- 7 Frost Bank
- 8 Security Service Federal Credit Union
- 9 Amegy Bank
- 10 Firstmark Credit Union
- 11 Randolph Brooks Federal Credit Union

### ENTERTAINMENT

- 1 Main Event
- 2 Northwoods Theater
- 3 Alamo Drafthouse
- 4 ICE & Golf Center
- 5 JW Marriot Resort



19026 RIDGEWOOD PARKWAY  
SAN ANTONIO, TX 78259

FOR LEASING INFORMATION  
CONTACT:

Shawn Gulley  
Senior Vice President of Leasing & Acquisitions  
210.805.3333  
shawn@worthsa.com

[www.ridgewoodofficeparksa.com](http://www.ridgewoodofficeparksa.com)



RidgeWood Plaza is Developed, Leased  
and Managed by Worth & Associates



WORTH  
& ASSOCIATES

7373 Broadway, Suite 201 • San Antonio, TX 78209  
210.822.5220 • Fax 210.822.5224 • [www.worthsa.com](http://www.worthsa.com)