



**268 Freight Road, Rocky Mount NC, 27804**

Asking rent per month = \$5000

**Listing Details**

<b>Lease type</b>	<b>Investment/OU</b>
<b>Property Type</b>	<b>Retail/Office</b>
<b>Subtype</b>	<b>Freestanding/Flex</b>
<b>Acres</b>	<b>1.75</b>
<b>GLA</b>	<b>6000 Square Feet</b>
<b>Zoning</b>	<b>Office &amp; Institutional</b>

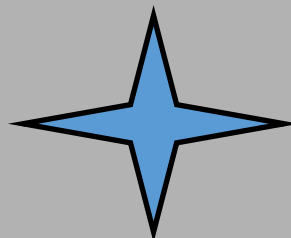
**Highlights**

- .Fully built out as a daycare
- .Includes small kitchen with hood
- .Includes back area for playground
- .Sinks are present in multiple rooms
- .2 min drive from I-95
- .Plenty of parking
- .Back area is fenced
- .includes 7 large rooms
- .Close to main city road
- .5 min from highway 64

Located in Rocky Mount NC, this freestanding daycare is in excellent condition ready to be leased. The building has a building capacity of 100 children and includes 7 rooms, a small kitchen with hood system, and a couple of bathrooms. There is a fenced area in the back for a playground and plenty of parking is present. Some of the rooms have a sink and bathroom present. The property itself is a 1 min drive to I-95 and no more than 5 mins away from highway 64, Sheetz, and Nash Community College. Don't miss this amazing opportunity before it leaves the market.



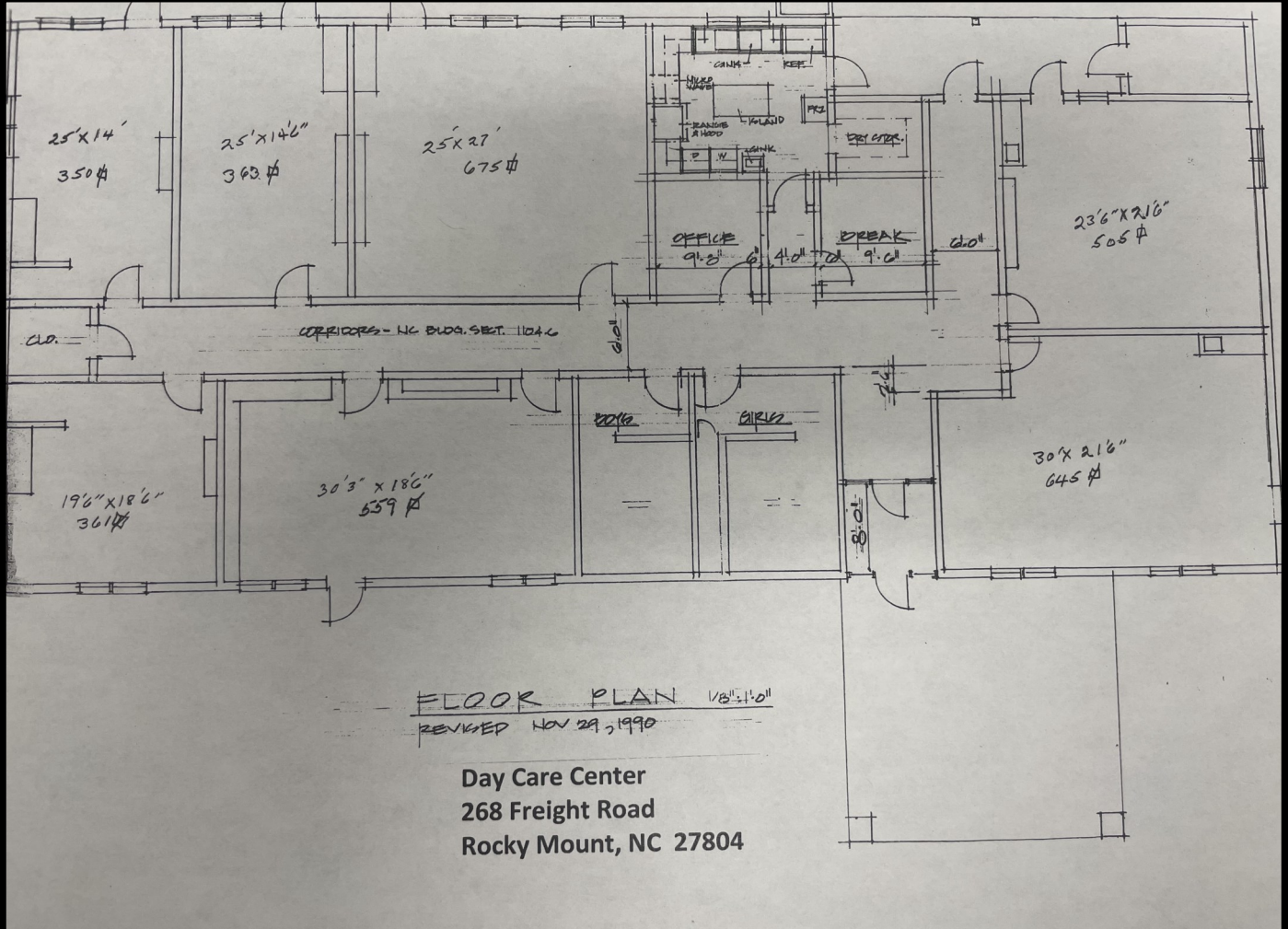
**Phillip Rabil**  
[Phillip@chambliss-rabil.com](mailto:Phillip@chambliss-rabil.com)  
**Mobile: (252) 382-8117**  
**Office: (252) 443-5115**  
**Fax: (252) 442-9487**



821 Country Club Rd, Suite 10  
 Rocky Mount NC, 27804

**WWW.Chambliss-Rabil.com**





**Day Care Center**  
**268 Freight Road**  
**Rocky Mount, NC 27804**





