

## WILLOWS ROW OFFERING

10304 NE 185<sup>th</sup> St Bothell – 13 Townhome Development Site



✉ [alice@aliceonrealty.com](mailto:alice@aliceonrealty.com)

☎ 206.849.8485



## Willows Row

### Executive Summary

Wonderland Real Estate proudly presents: the Willows Row 13 Townhome Development Site. Nestled in the vibrant heart of downtown Bothell, WA, this site is primed for the development of a collection of luxurious townhomes. Upon receiving the City's approval of the construction-ready plans, the project is shovel-ready and can be built this summer. Bothell, a community brimming with charm and undergoing downtown revitalization, embodies the finest of King and Snohomish counties. It boasts an array of parks, recreational activities, top-tier schools, a variety of dining options, and shopping.

Address	10304 NE 185 <sup>th</sup> St, Bothell WA
Land Use Permit	SUB2021-18687
Number of Units	13
Parcel Number	9567800030
Lot Size Sqft	14,388
List Price	TBD By Market
Video Tour	<a href="#">Video Tour</a>



The information included in this document has been secured from sources we believe to be reliable, but we make no representations or warranties, expressed or implied, as to the accuracy of the information. Interested parties should conduct an independent investigation of the property. Buyer must verify all information.

## Willows Row

---

<b>Floor Plans</b>	<b>QTY</b>	<b>Beds</b>	<b>Den</b>	<b>Bath</b>	<b>Sqft</b>
Unit 1.1 – 1.5	5	3	-	2.5	1,425
Unit 2	1	4	-	3.5	2,100
Unit 3	1	3	1	3.5	1,800
Unit 4.1 – 4.6	6	3	1	3	1,600





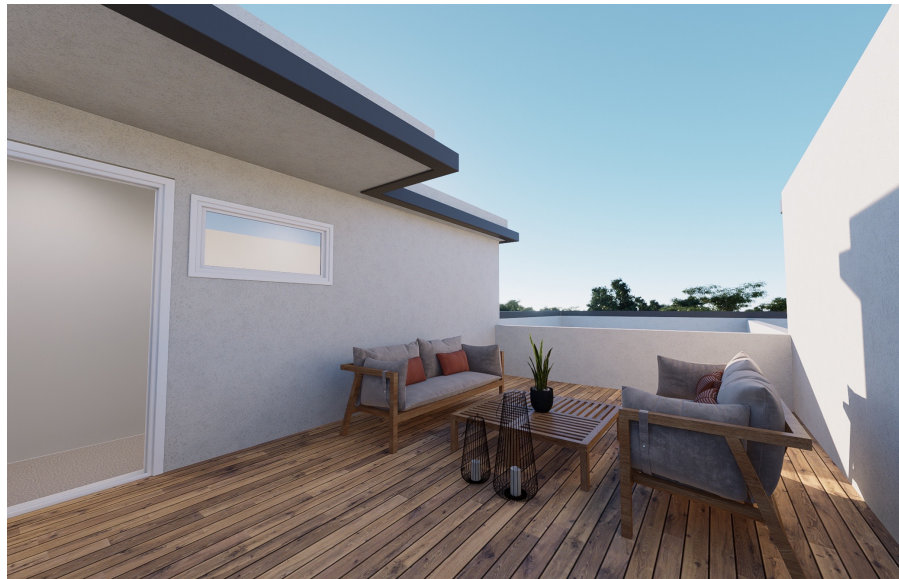
# Willows Row

---





# Willows Row





FLOOR PLANS : UNIT 1.2 - 1.5



LEVEL 1



LEVEL 2



LEVEL 3



ROOF PLAN



FLOOR PLANS : UNIT 2



LEVEL 1



LEVEL 2



LEVEL 3



ROOF PLAN



FLOOR PLANS : UNIT 3



LEVEL 1



LEVEL 2



LEVEL 3



ROOF PLAN

FLOOR PLANS : UNIT 4.1 - 4.6



LEVEL 1



LEVEL 2



LEVEL 3





# Willows Row



# Willows Row

---





# Willows Row

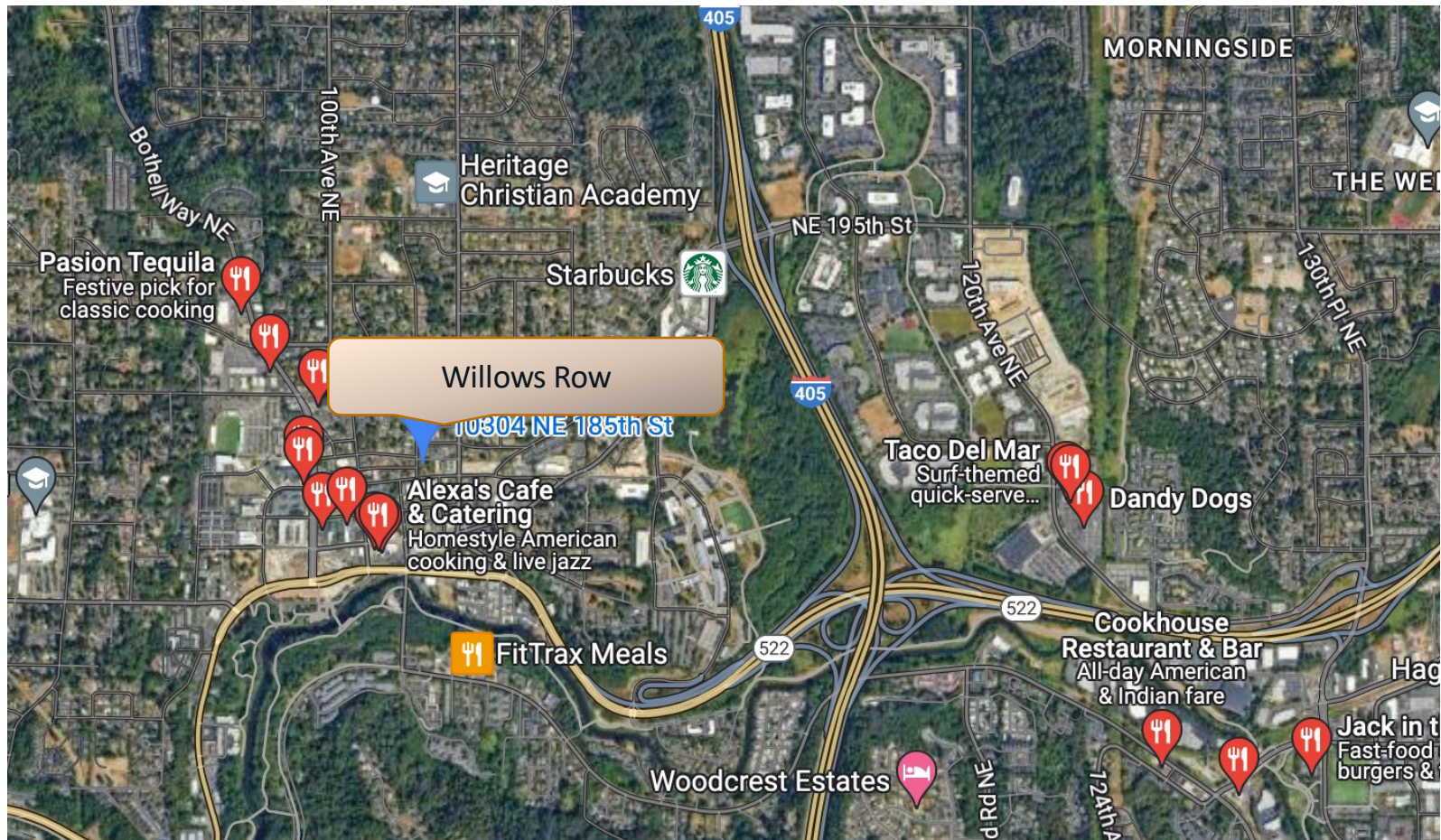
---





## Willows Row

Downtown Bothell is within easy walking distance, outdoor recreation facilities, lakes and the 405 are all located only moments from this location.







The information included in this document has been secured from sources we believe to be reliable, but we make no representations or warranties, expressed or implied, as to the accuracy of the information. Interested parties should conduct an independent investigation of the property. Buyer must verify all information.



✉ • [alice@aliceonrealty.com](mailto:alice@aliceonrealty.com) ☎ • 206.849.8485