

CLICK BELOW TO JUMP TO EACH FLOOR PLAN 

[AMHERST](#) 3203 Lawton Rd

[LANGLEY](#) 3751 Maguire Blvd

[ST. PAUL](#) 1080 Woodcock Rd

[CARR](#) 3113 Lawton Rd

[LEXINGTON](#) 3319 Maguire Blvd

[TEDDER](#) 988 Woodcock Rd

[ENTERPRISE](#) 1001 Executive Center Dr

[PALMETTO](#) 1040 Woodcock Rd

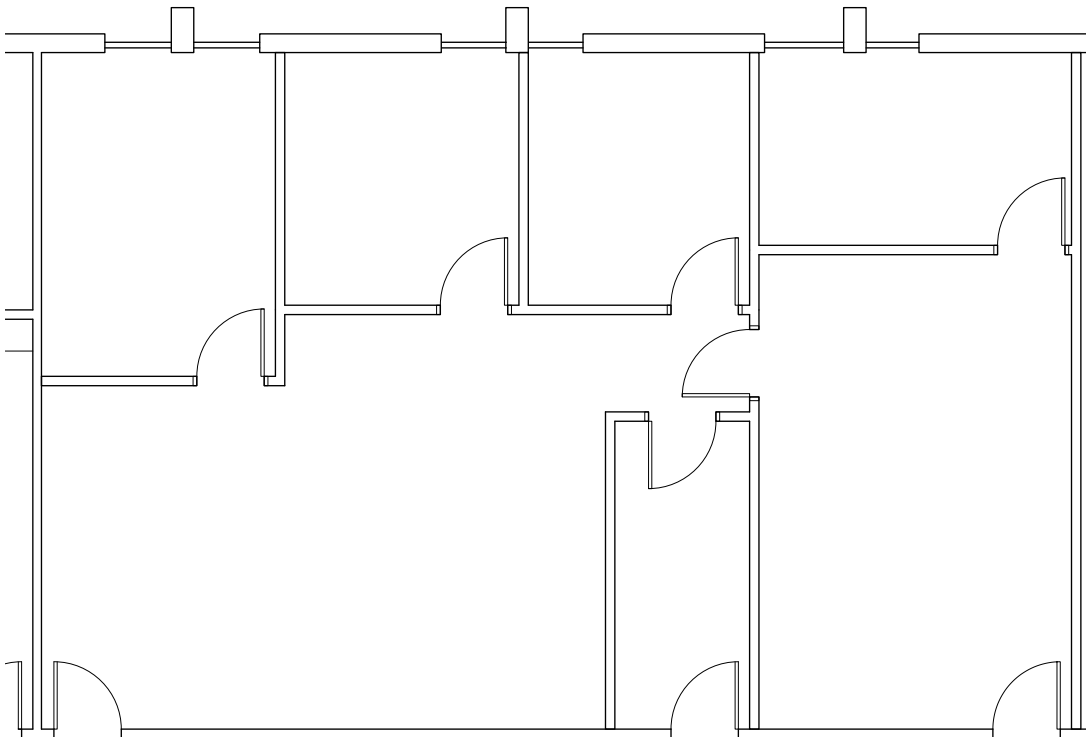
[YORKTOWN](#) 657 Maguire Blvd

[ESSEX](#) 3101 Maguire Blvd

[PORTERFIELD](#) 3191 Maguire Blvd

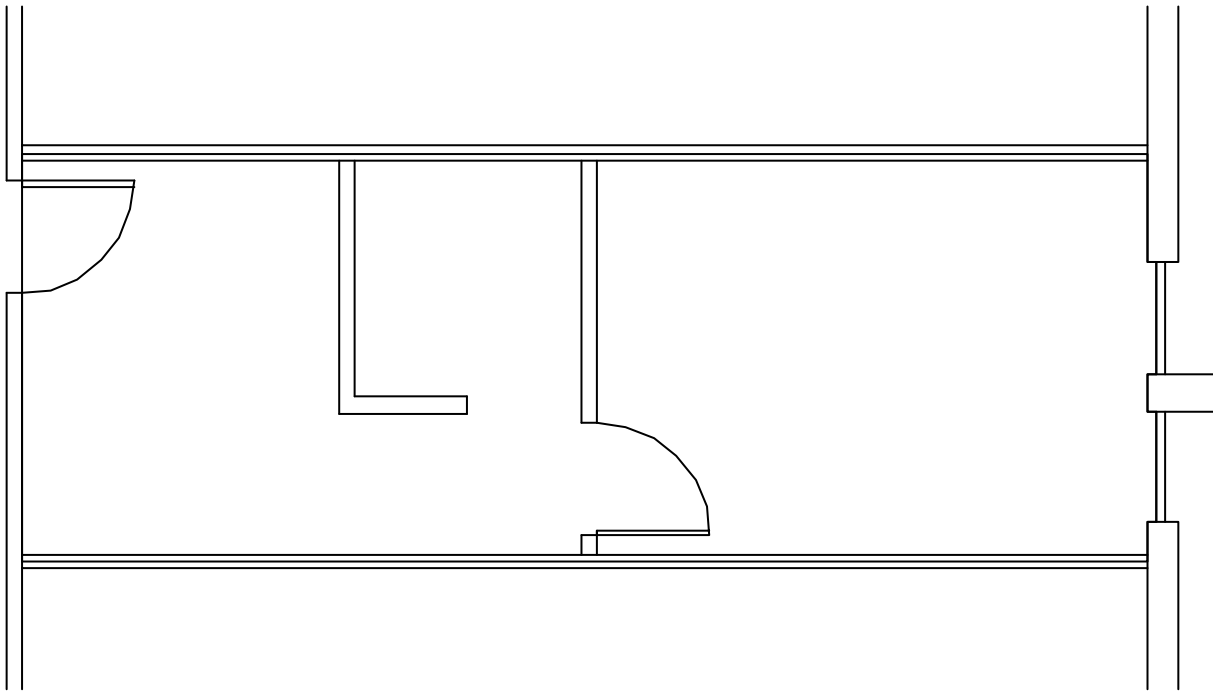
SUITE 126

1,608 RSF



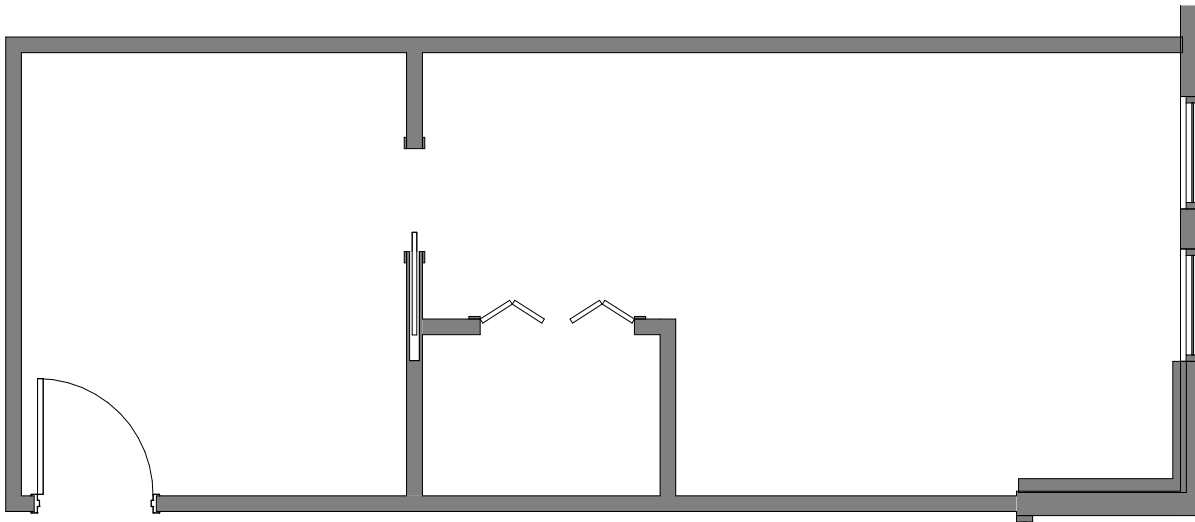
SUITE 130

513 RSF



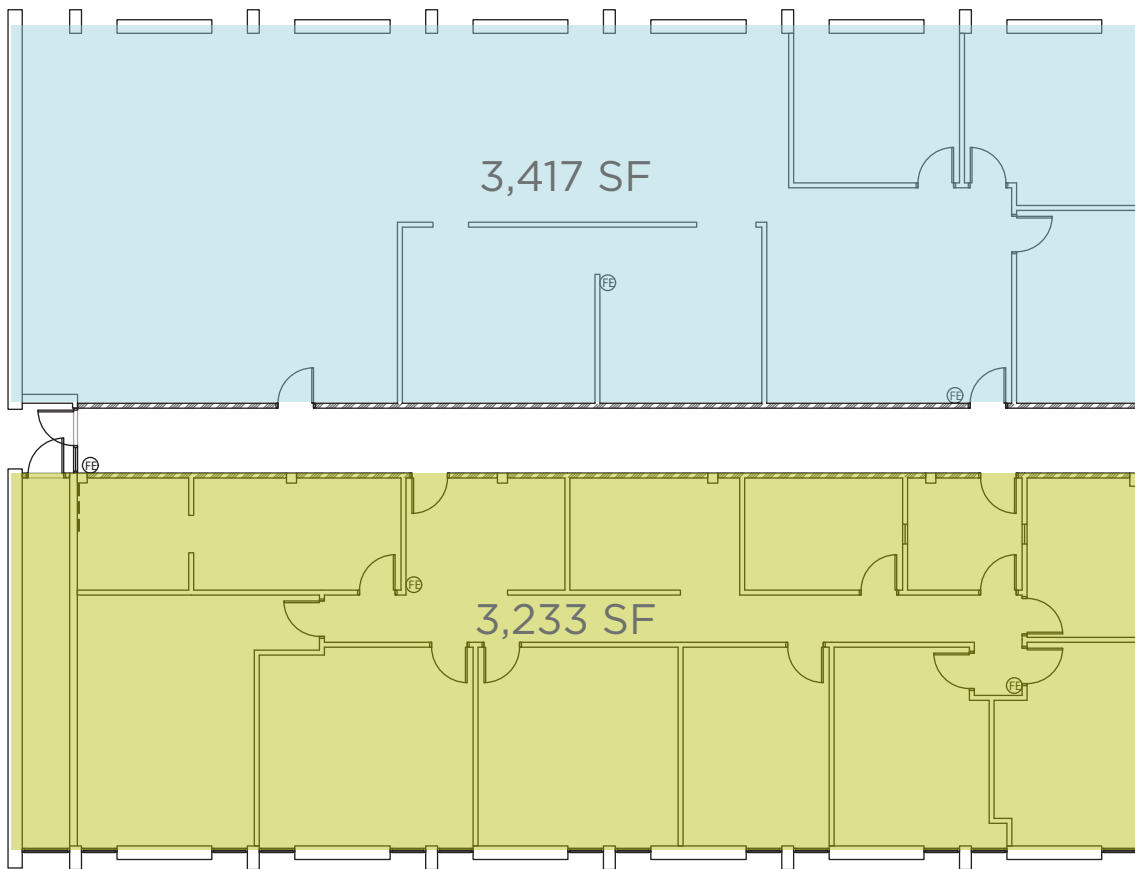
SUITE 151

416 RSF



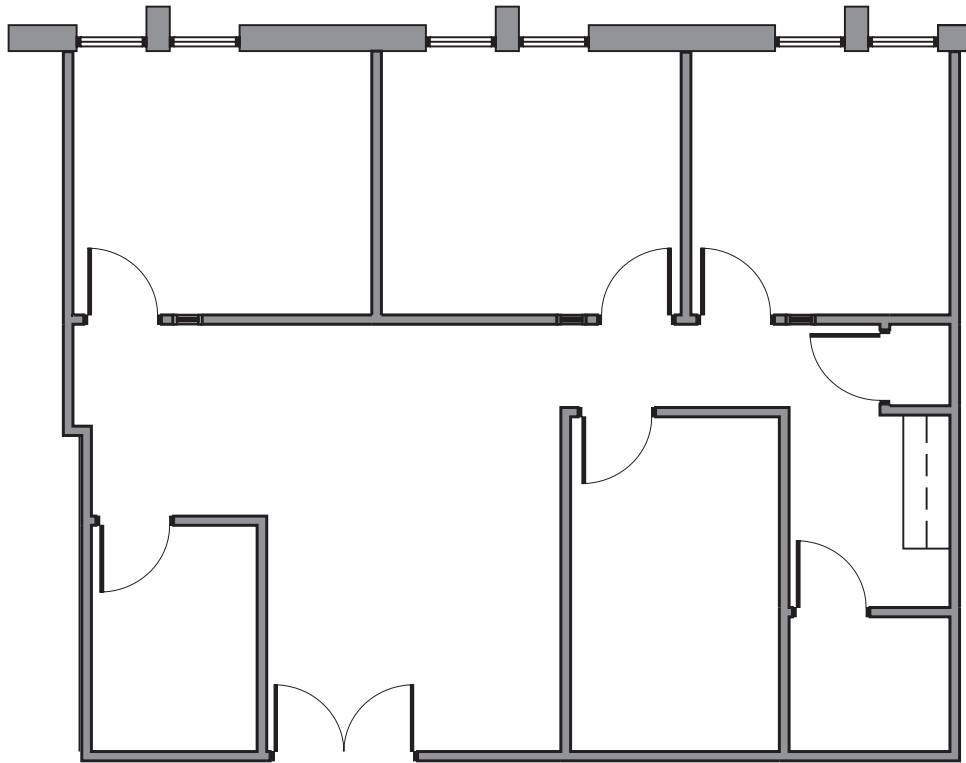
SUITE 100

3,233 -6,649 SF



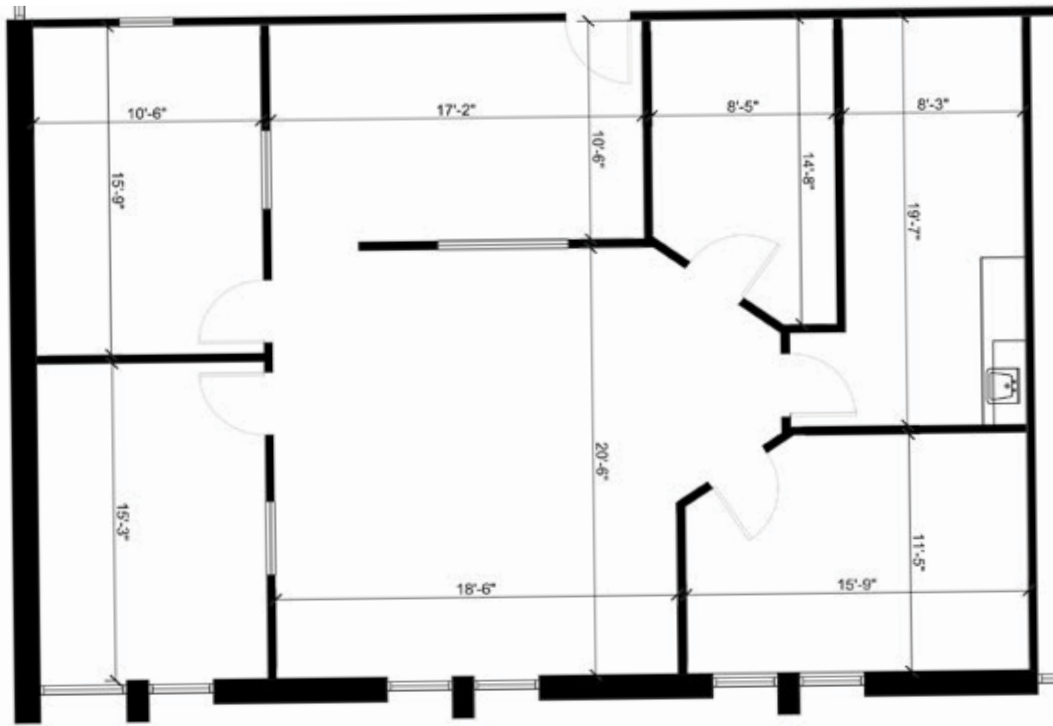
SUITE 200

1,368 SF *Can be combined to total 3,018 SF*



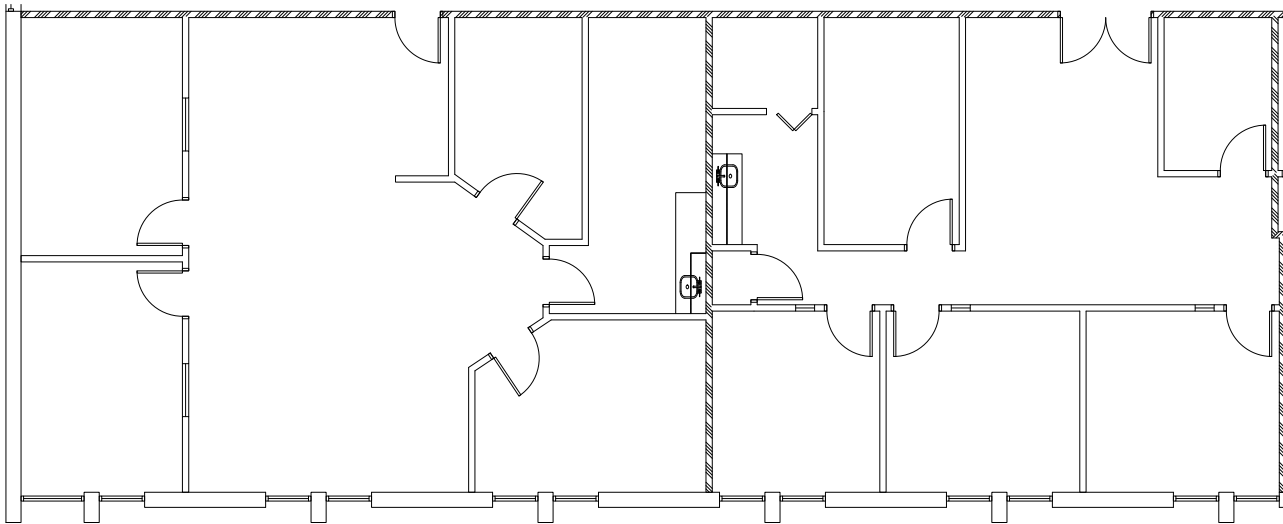
SUITE 225

1,650 SF *Can be combined to total 3,018 SF*



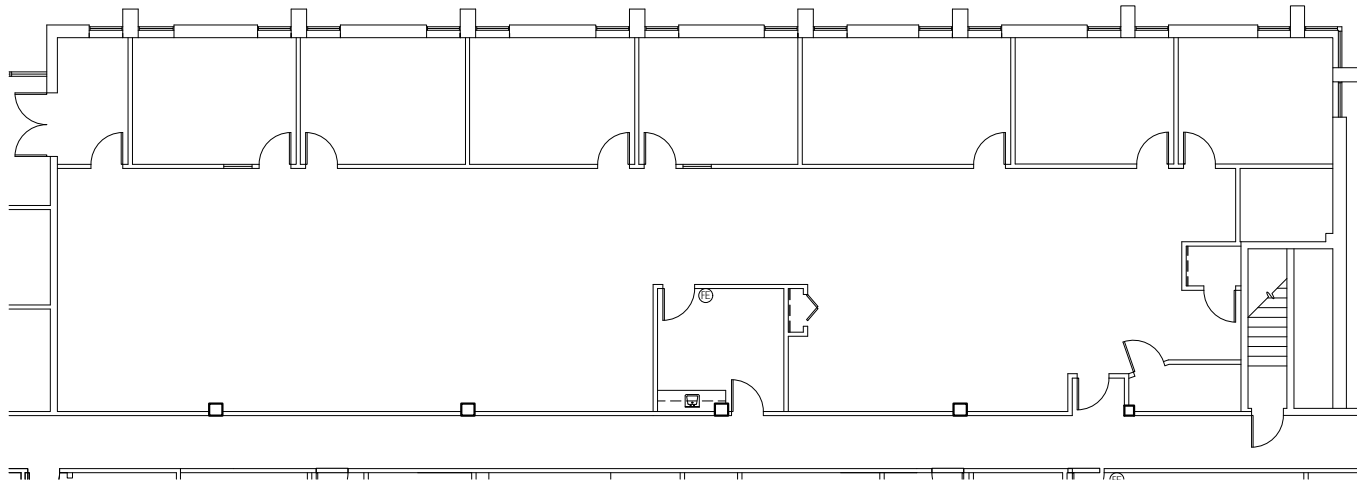
SUITE 200 & 225

3,018 SF



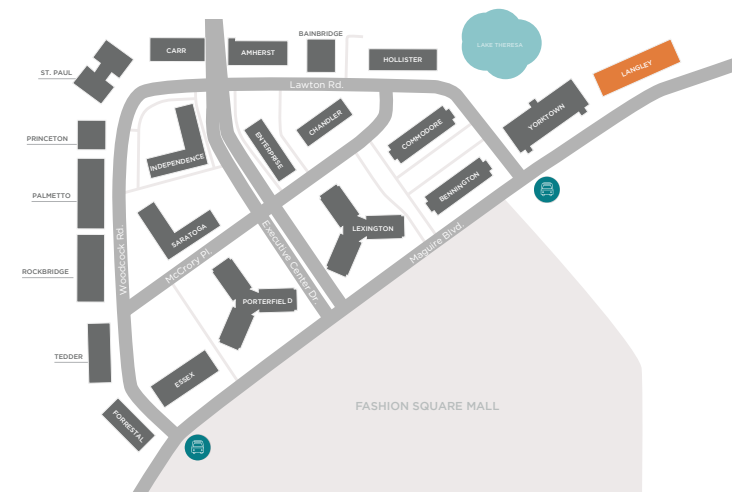
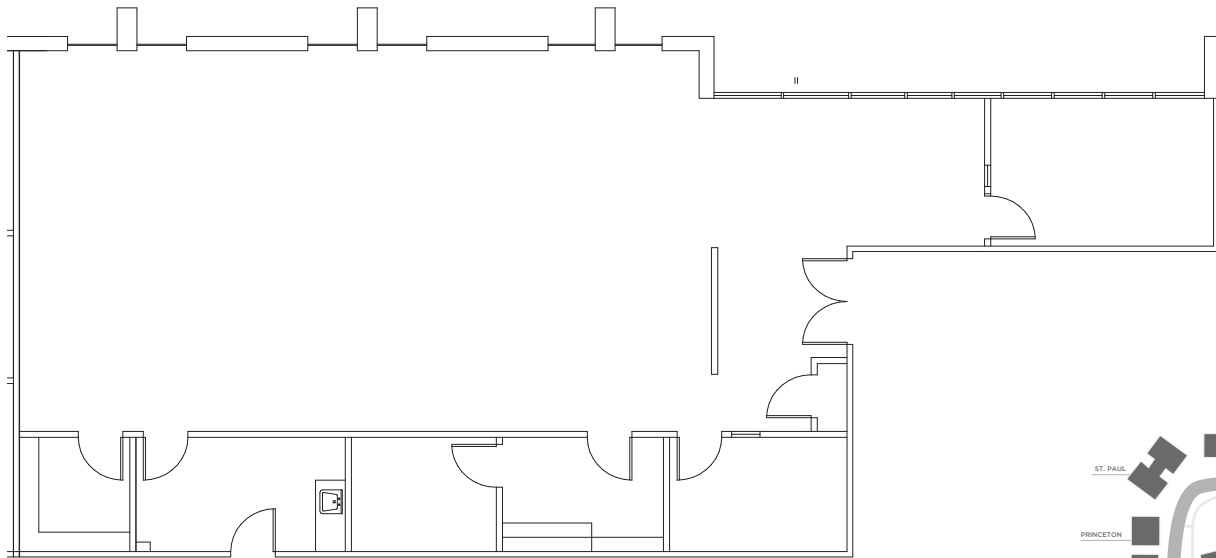
SUITE 110

4,775 SF *Pending*



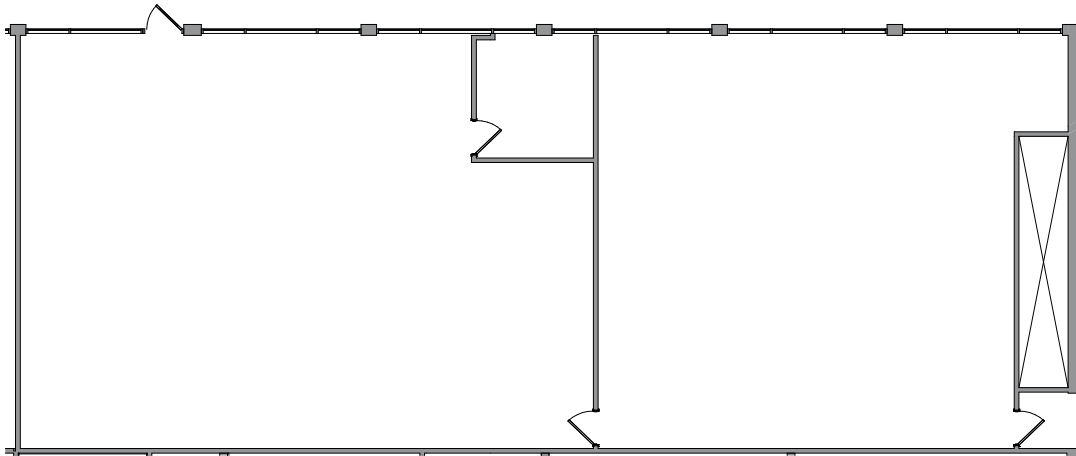
SUITE 200

2,506 SF Available 7/1/26



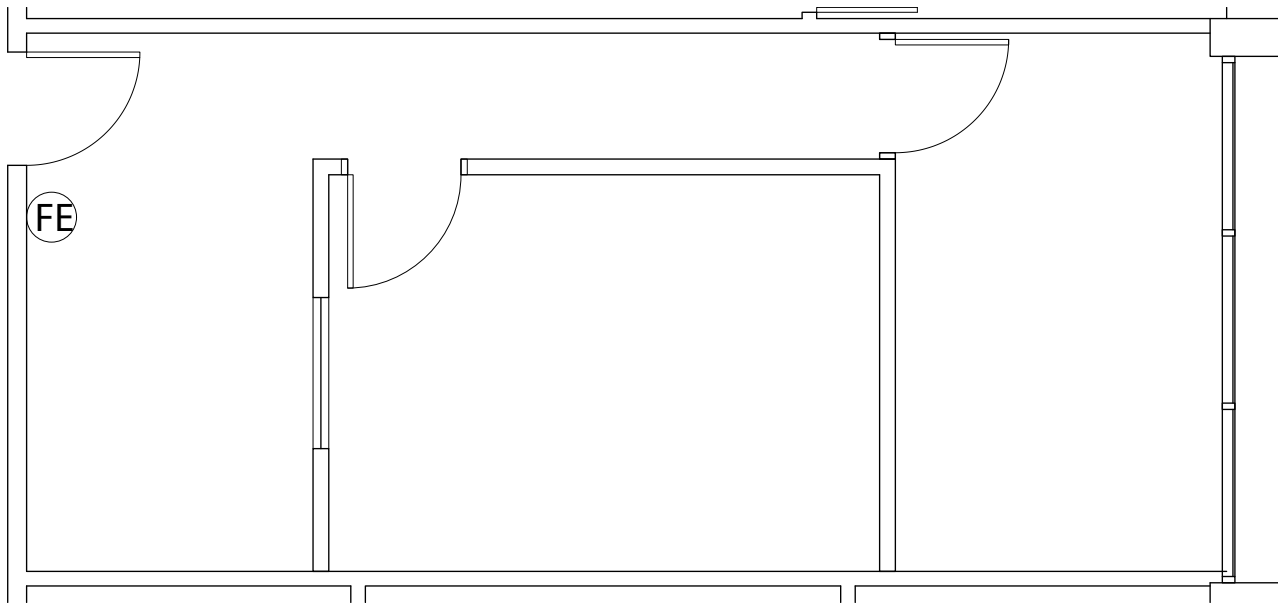
SUITE 160

3,690 SF



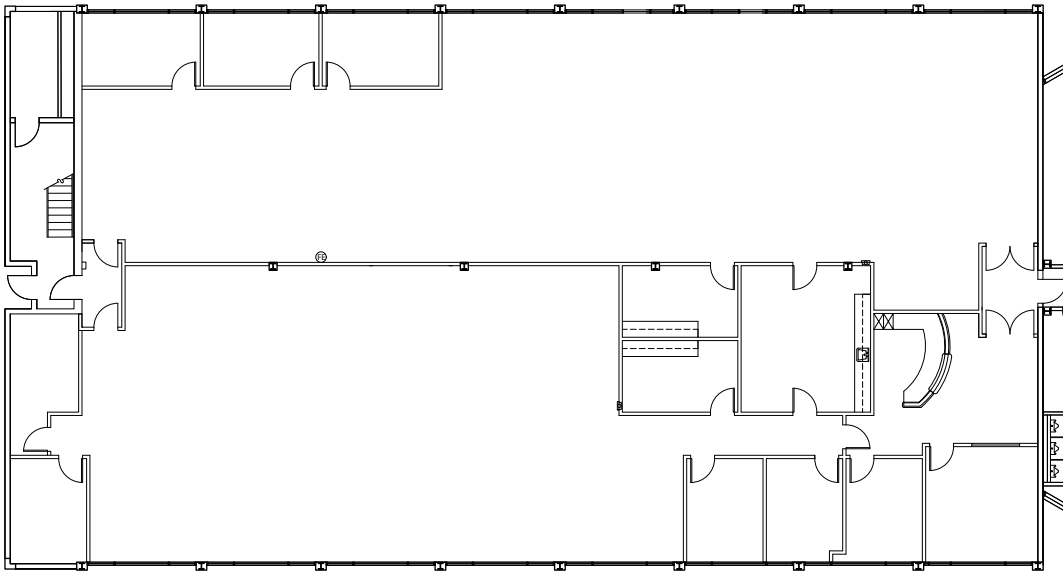
SUITE 214

532 SF (Available 7/1/26)



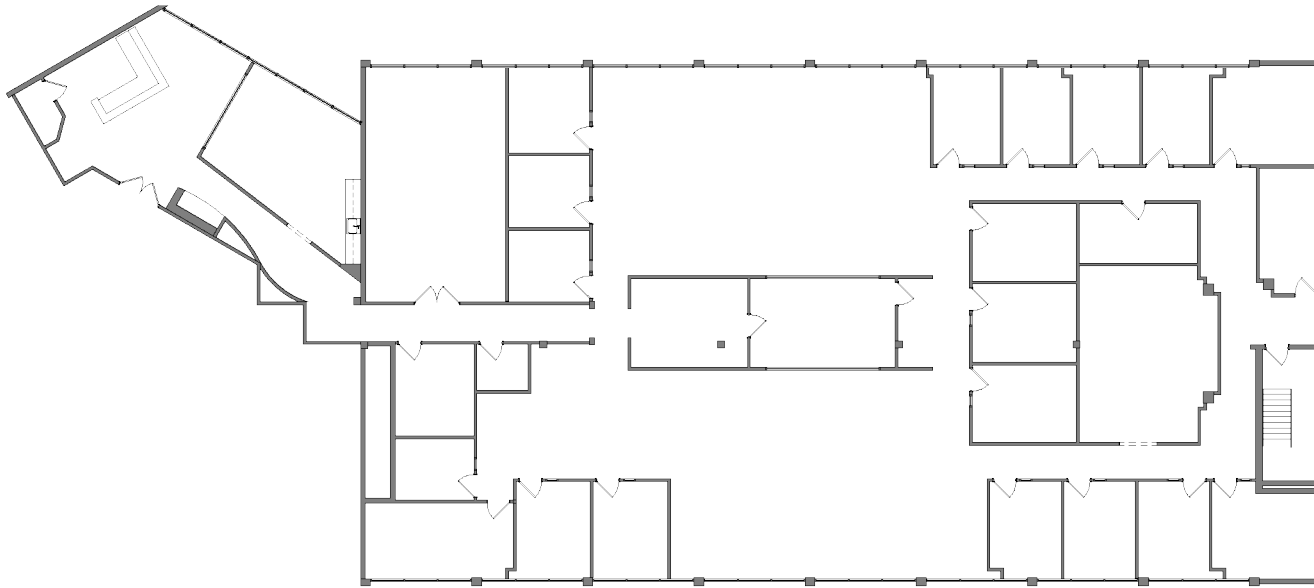
SUITE 180 & 190

9,531 SF



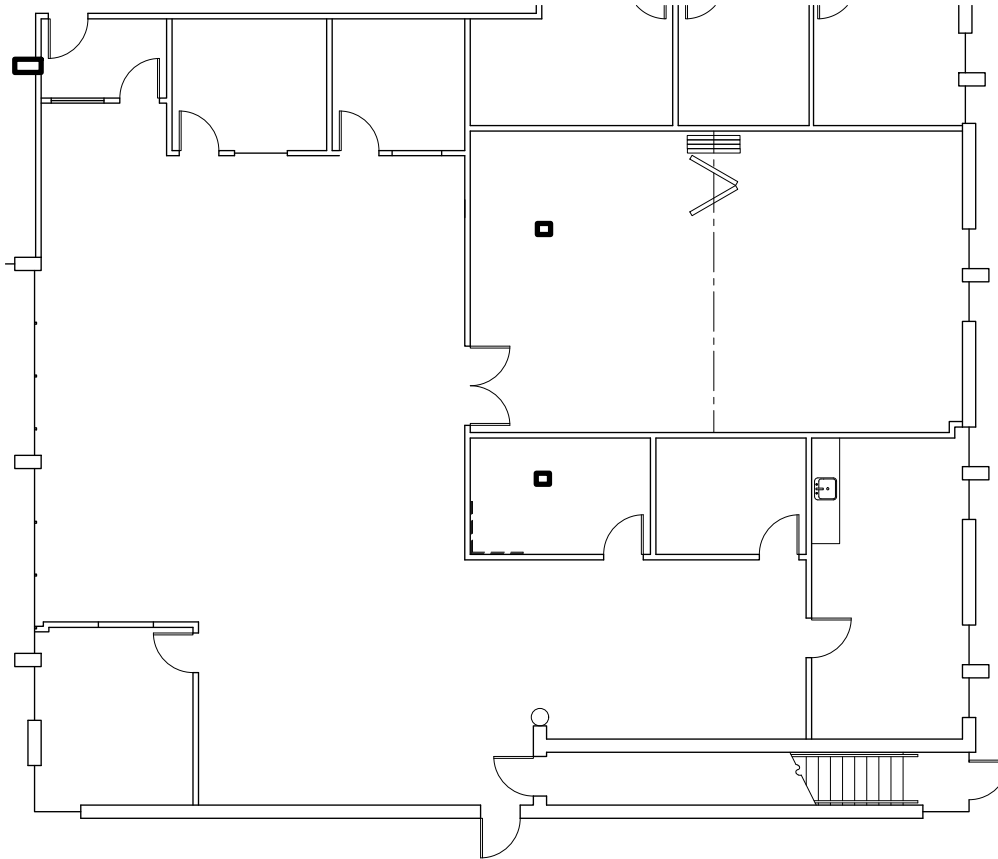
SUITE 200

10,096 SF *Pending*



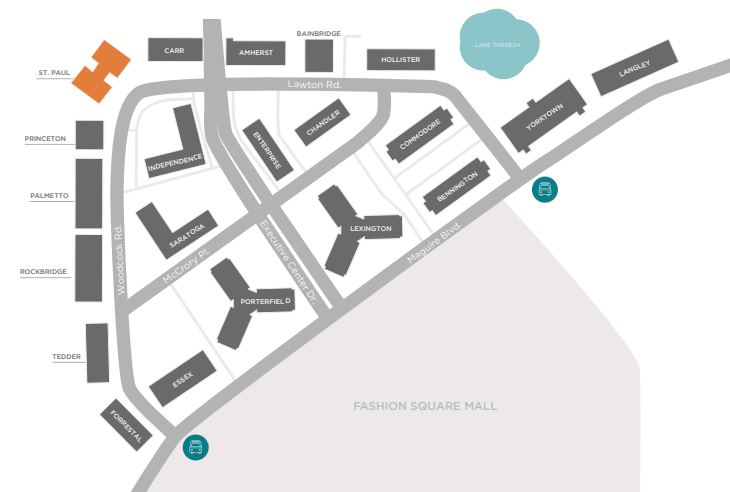
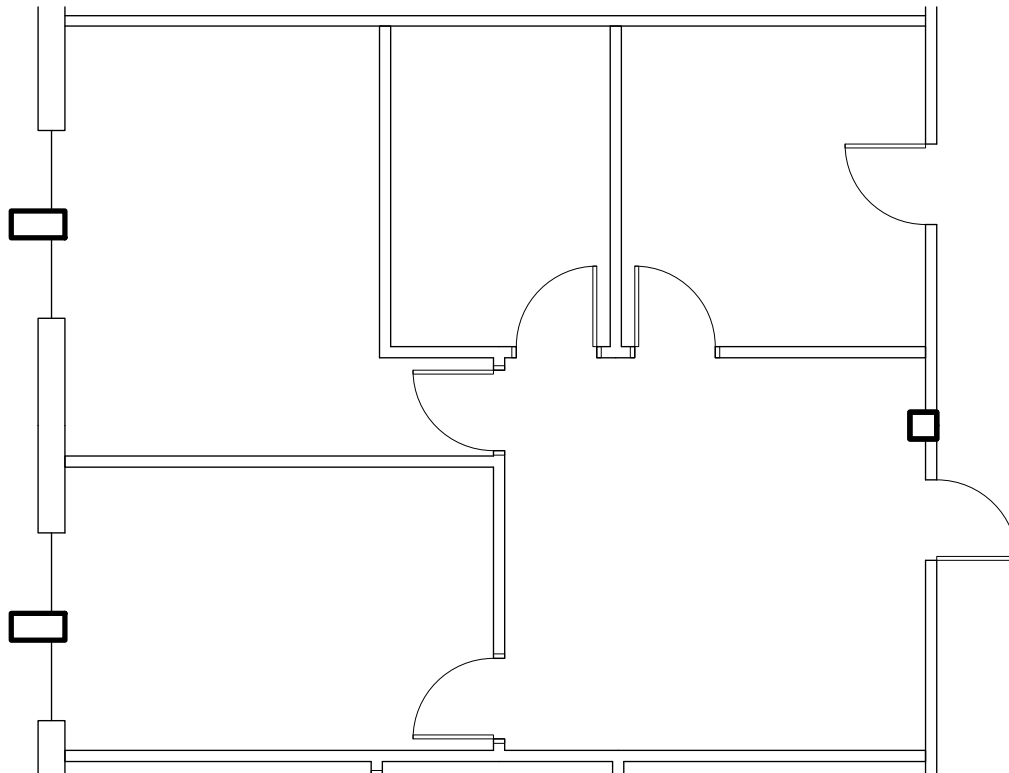
SUITE 111

4,302 SF



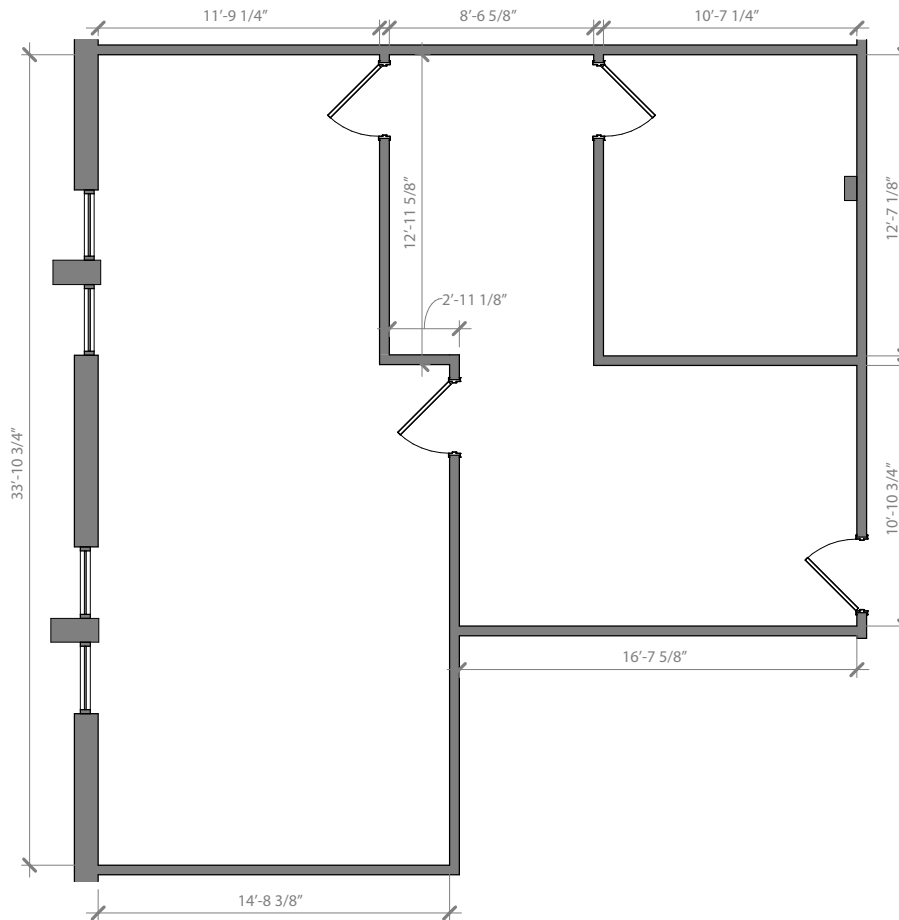
SUITE 266

1,020 SF



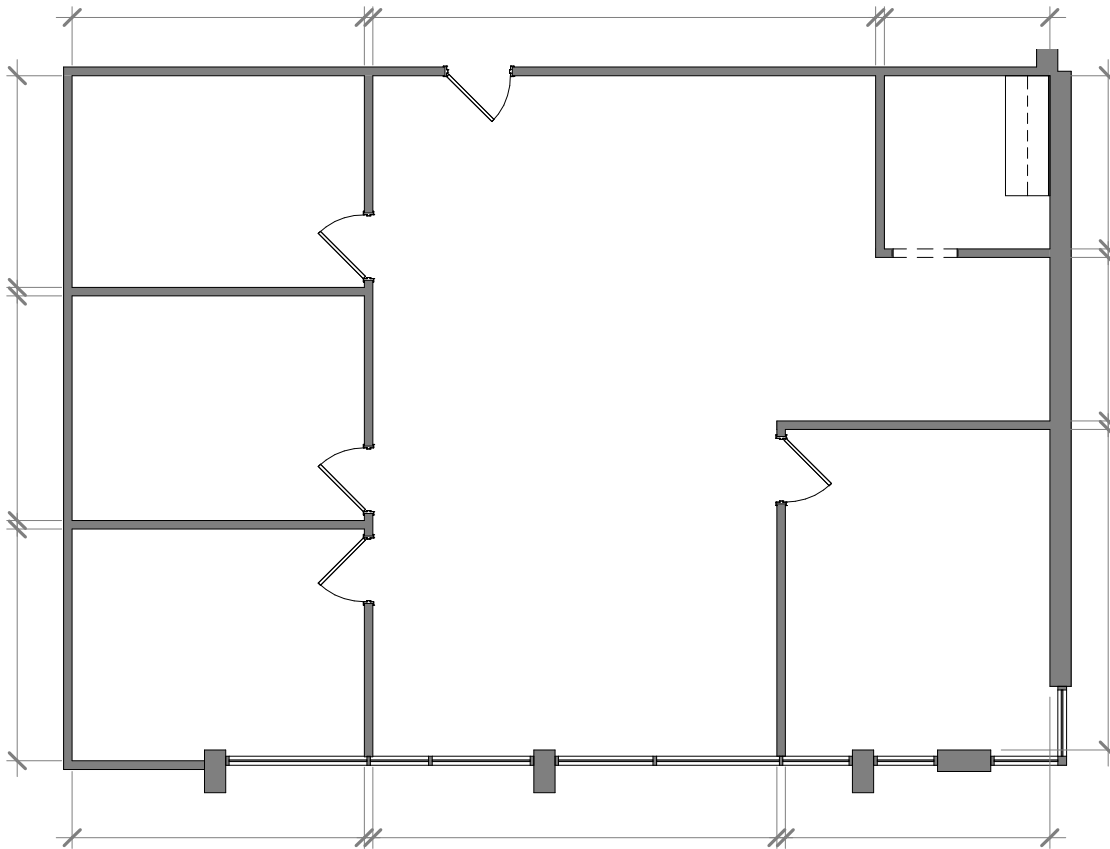
SUITE 268

1,118 SF



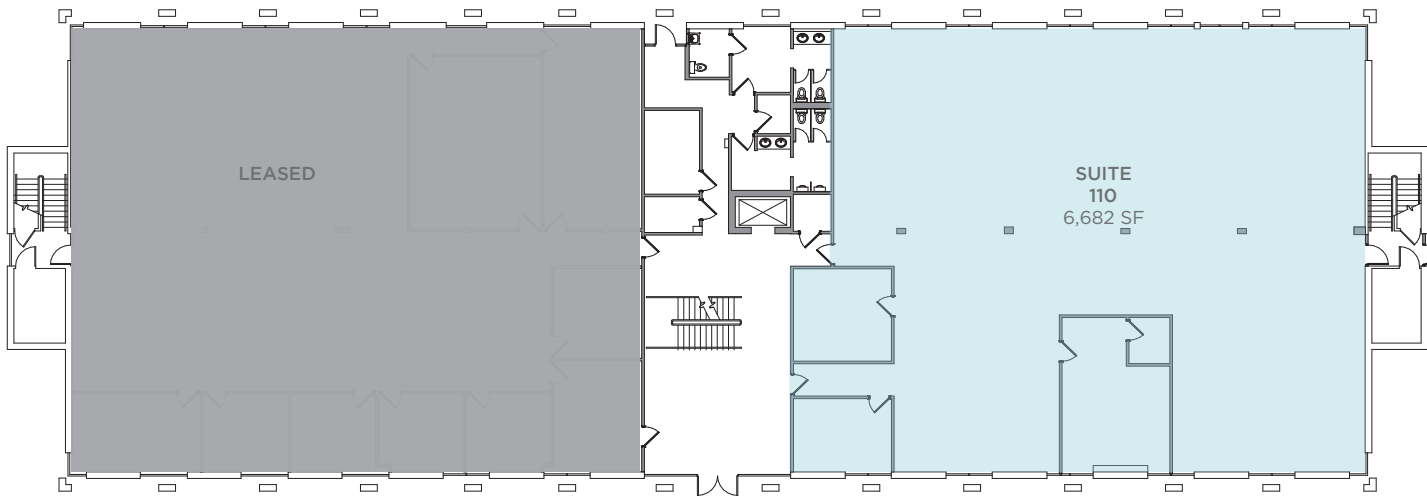
SUITE 295

1,721 SF



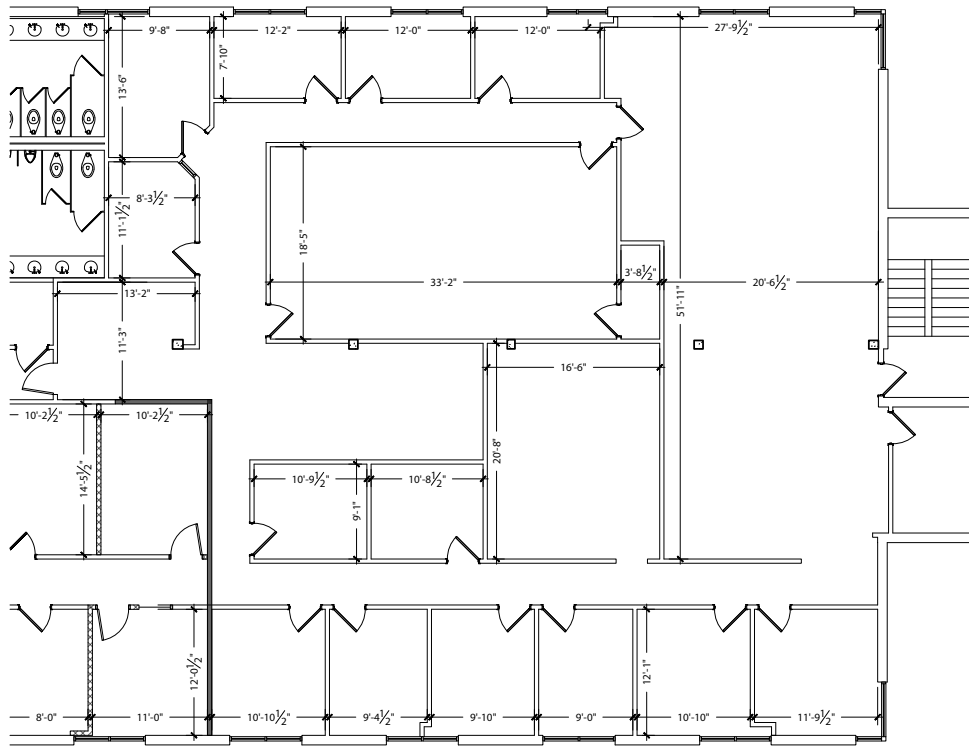
SUITE 110

6,682 SF



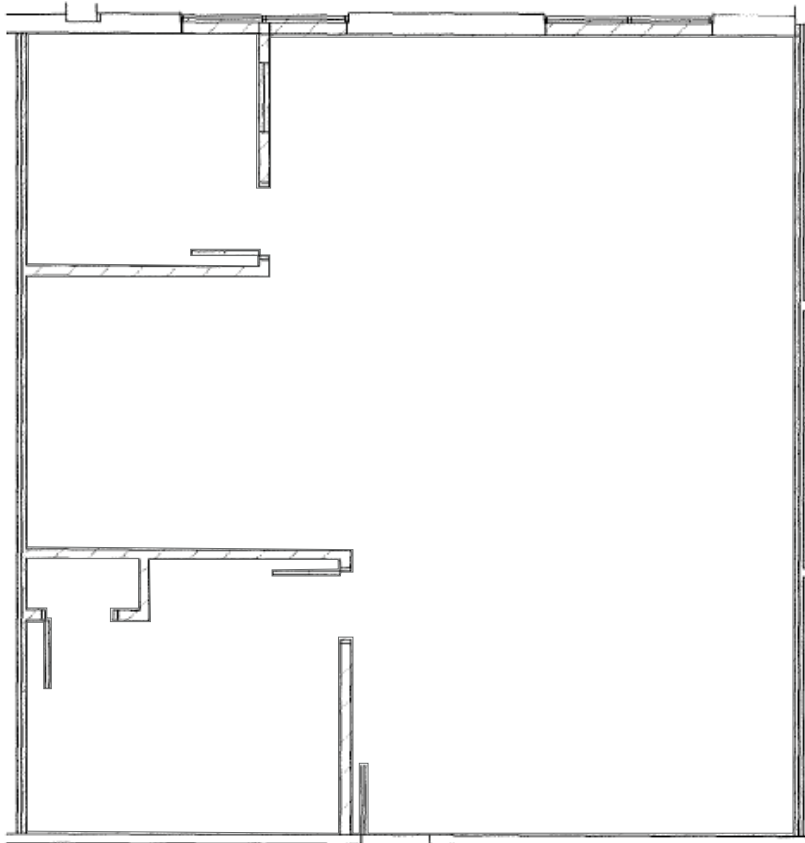
SUITE 250

5,582 SF



SUITE 7130

1,372 RSF



SUITE 151
4,519 RSF

