

# 4820 BUSINESS CENTER DRIVE FOR LEASE

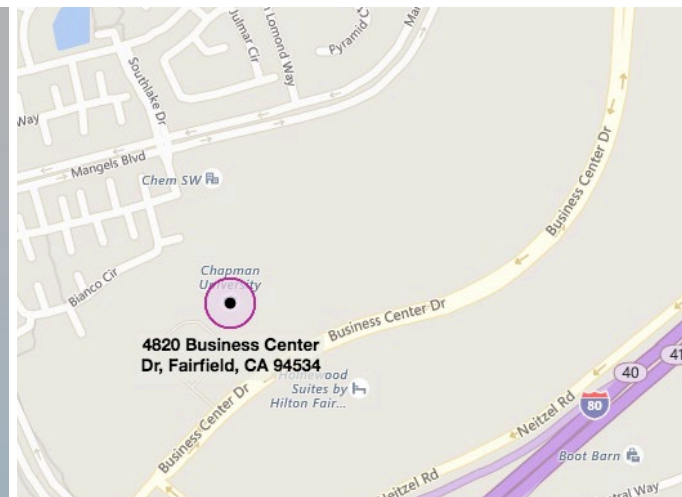
Fairfield, CA

Class "A" Office Space



## Property Highlights

- 54,018 SF, 2-story class "A" office building
- First Floor
  - Suite 110: 2,679 SF
  - Suite 115: #2: Executive Office / 140 SF
  - Suite 140: 1,050 SF
- Second Floor - (18,419 SF contiguous)
  - Suite 210: 6,832 SF
  - Suite 220: 6,627 SF
  - Suite 250: 2,979 SF
  - Suite 245: 1,981 SF
- Excellent visibility and access from Interstate 80 & 680
- 4 per 1,000 SF parking ratio
- Fiber optics available at site
- Extensive glass line with mature landscaping
- To schedule a tour or to obtain pricing please contact



**Green Valley Corporate Park** is a 132-acre business park entitled for over 2,000,000 sf of office and high-tech space, hotel, restaurants, and child-care. The buildings feature freeway visibility and outstanding project exposure. The park is located approximately 39 miles to San Francisco and 35 miles to Sacramento. The surrounding area features a large, well-educated labor pool, affordable housing, and unsurpassed quality of life amenities.

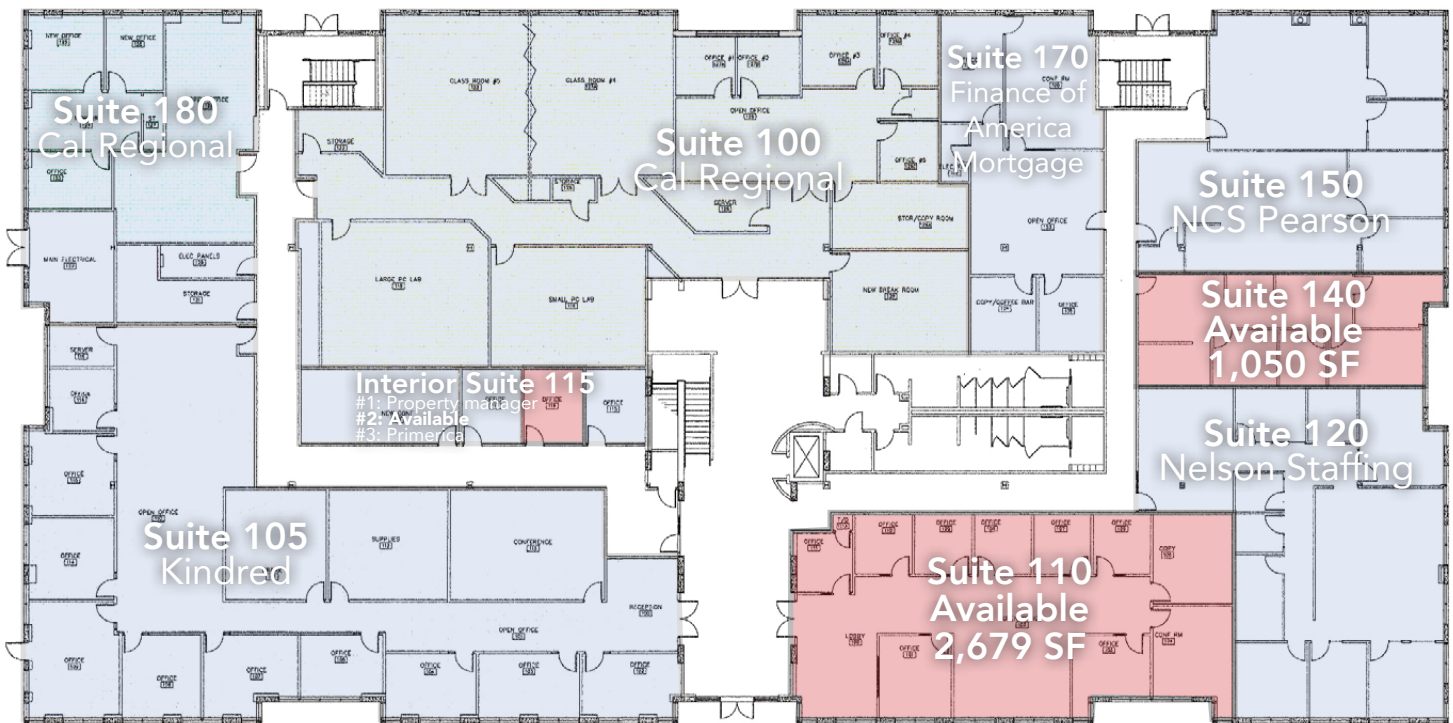


**SHOEMAKER**  
COMMERCIAL  
REAL ESTATE

**Chuck Griffen**  
Associate Sales Person  
831.234.3023  
chuck@shoemakercommercial.com  
CalBRE# 01227041

# 4820 BUSINESS CENTER DRIVE FLOOR PLAN

## First Floor

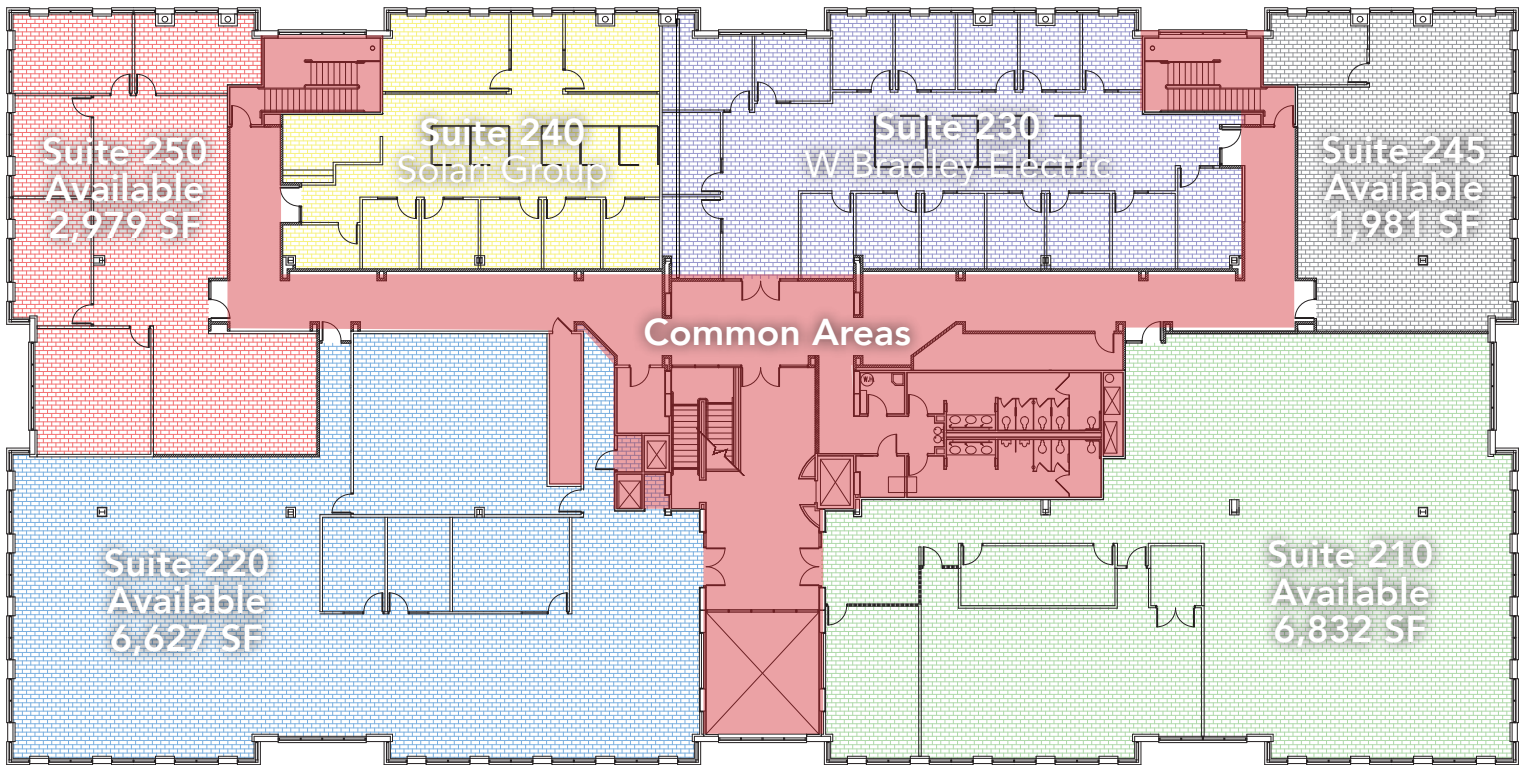


**SHOEMAKER**  
COMMERCIAL  
REAL ESTATE

**Chuck Griffen**  
Associate Sales Person  
831.234.3023  
chuck@shoemakercommercial.com  
CalBRE# 01227041

# 4820 BUSINESS CENTER DRIVE FLOOR PLAN

## Second Floor

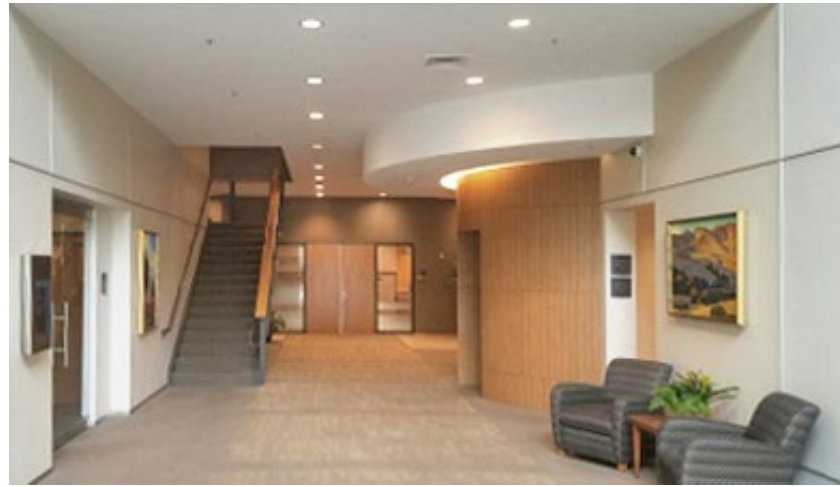
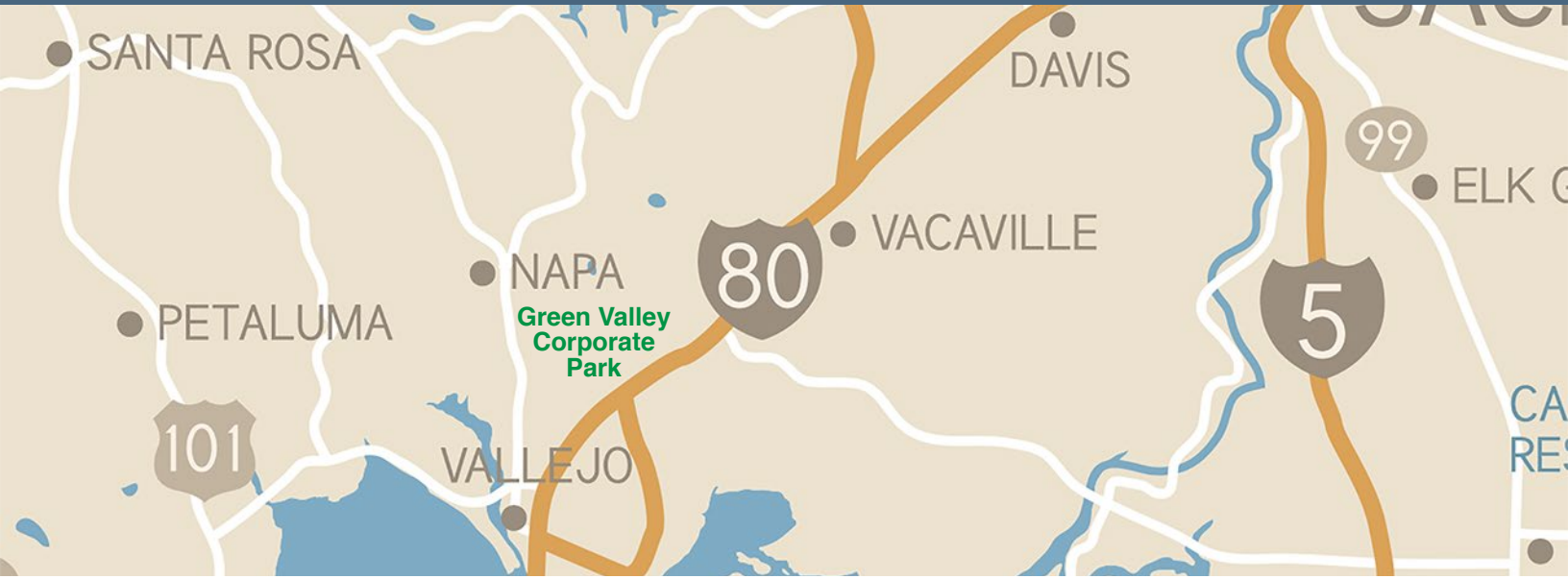


**SHOEMAKER**  
COMMERCIAL  
REAL ESTATE

**Chuck Griffen**  
Associate Sales Person  
831.234.3023  
chuck@shoemakercommercial.com  
CalBRE# 01227041

# 4820 BUSINESS CENTER DRIVE

# AREA MAP



**SHOEMAKER**  
COMMERCIAL  
REAL ESTATE

**Chuck Griffen**  
Associate Sales Person  
831.234.3023  
chuck@shoemakercommercial.com  
CalBRE# 01227041