

# 133 KEARNY

CREATIVE OFFICE SPACES FOR LEASE

- Financial District / Union Square
- Centralized location – one block from BART
- Operable windows
- High ceilings
- Excellent natural light

AVAILABLE NOW:

Suite 202 | 1,334 RSF | Flexible term



Suite 204 | 1,084 RSF | Dental Office



Suite 300 | 835 RSF | Creative Office Space

EXCLUSIVELY REPRESENTED BY:

BRYAN COLTON  
(415) 595-6959

bryancolton@coltoncommercialsf.com  
License # 02111407

JAY D. SHAFFER  
(415) 407-3997

jshaffer@coltoncommercialsf.com  
License #: 01444640

BRADLEY COLTON  
(415) 515-2333

bcolton@coltoncommercialsf.com  
License #: # 00805116

TORI DECOITE  
(415) 590-7874

tdecoite@coltoncommercialsf.com  
License #: 02042753



# 133 KEARNY

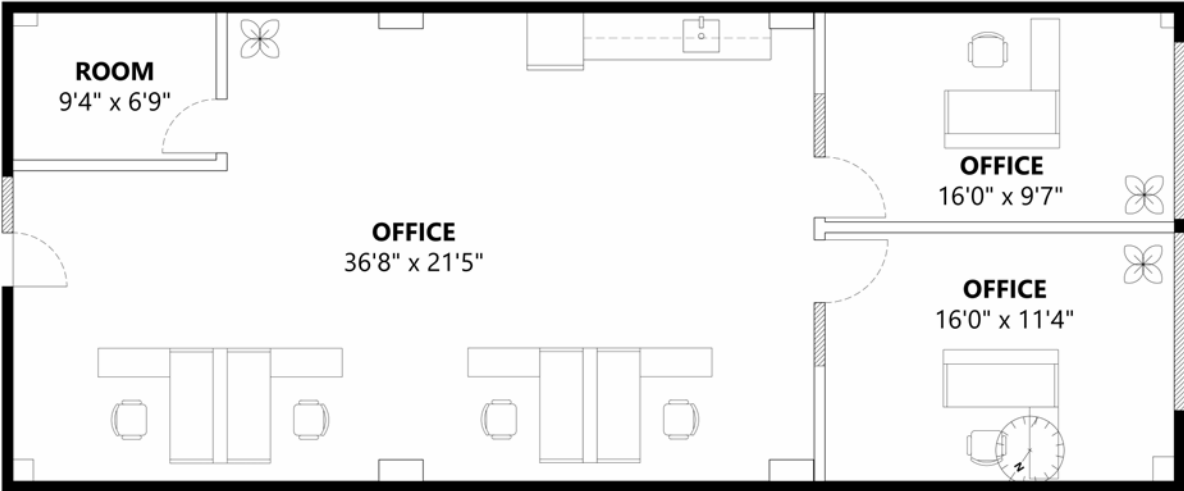
AVAILABLE NOW:

Suite 202 | 1,334 RSF | Flexible Term



## FLOOR PLAN SUITE 202

- Creative layout
  - Open area
- Two meeting rooms
  - Kitchenette
- Operable windows
  - Storage area



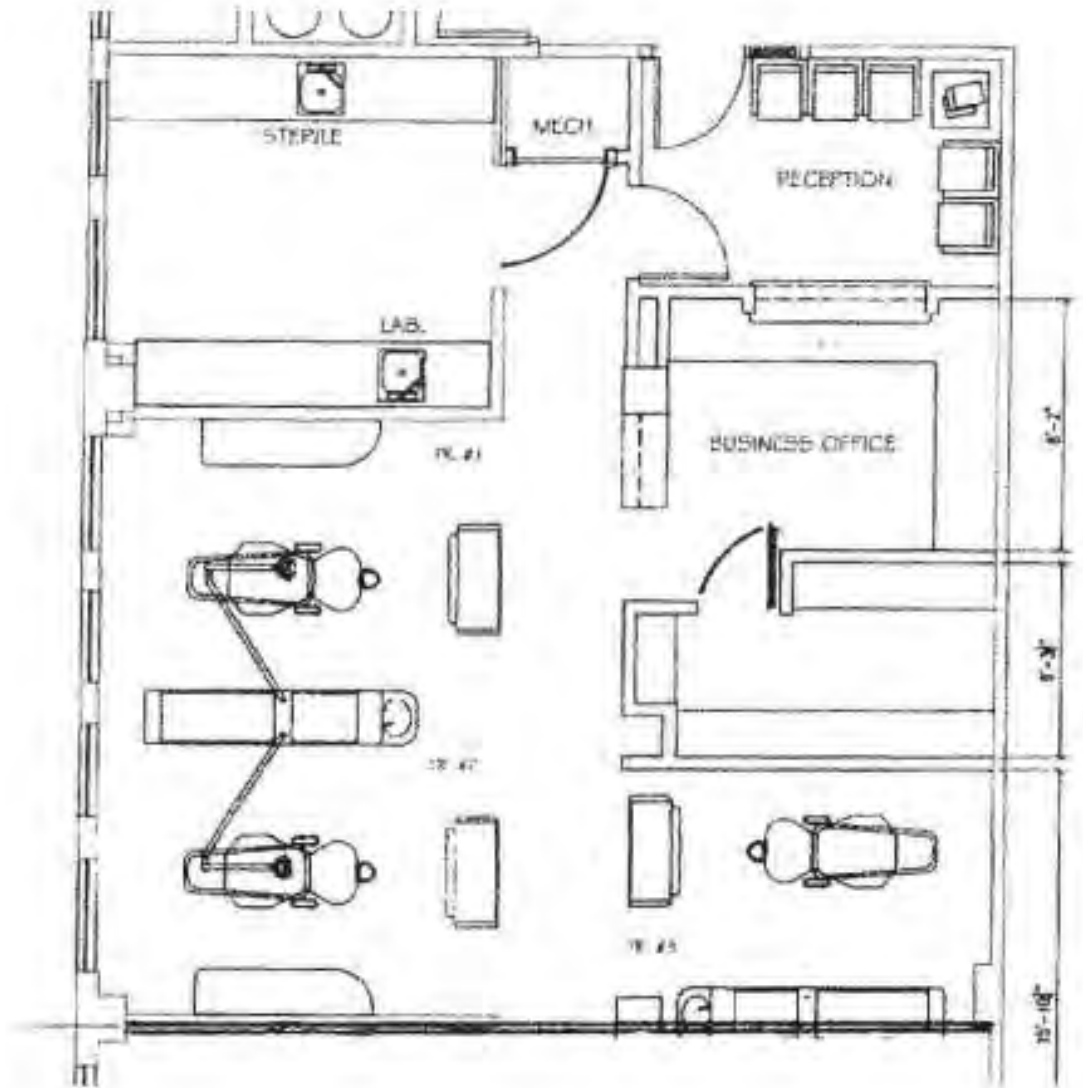
The foregoing is based upon information provided by others which we believe is accurate, however, no guarantee, warranty or representation is made. We recommend that all interested parties independently verify its accuracy and completeness. As well, any projections, assumptions, opinions, or estimates are used for example only and do not represent the current or future performance of the identified property. Your tax, financial, legal and toxic substance advisors should conduct a careful independent investigation of the property and its suitability for your needs, including land use limitations. The property is subject to prior lease, sale, change in price, or withdrawal from the market without notice.

# 133 KEARNY

AVAILABLE NOW:  
Suite 204 | 1,084 RSF | Dental Office



## FLOOR PLAN SUITE 204



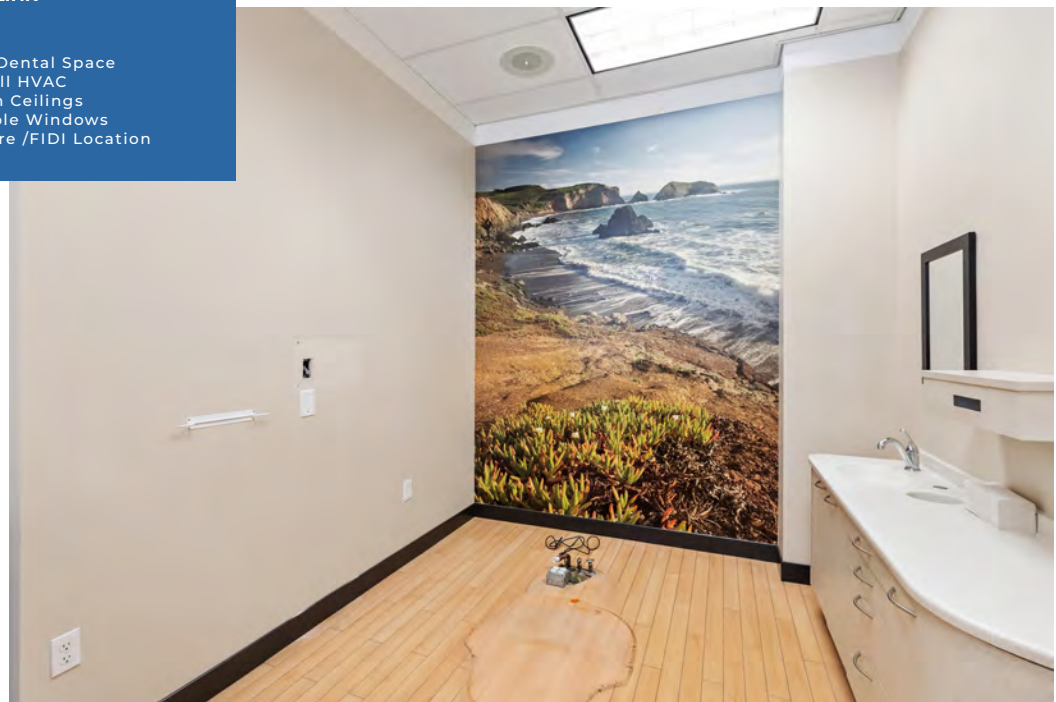
The foregoing is based upon information provided by others which we believe is accurate, however, no guarantee, warranty or representation is made. We recommend that all interested parties independently verify its accuracy and completeness. As well, any projections, assumptions, opinions, or estimates are used for example only and do not represent the current or future performance of the identified property. Your tax, financial, legal and toxic substance advisors should conduct a careful independent investigation of the property and its suitability for your needs, including land use limitations. The property is subject to prior lease, sale, change in price, or withdrawal from the market without notice.



Suite 204 | 1,084 RSF | Dental Office



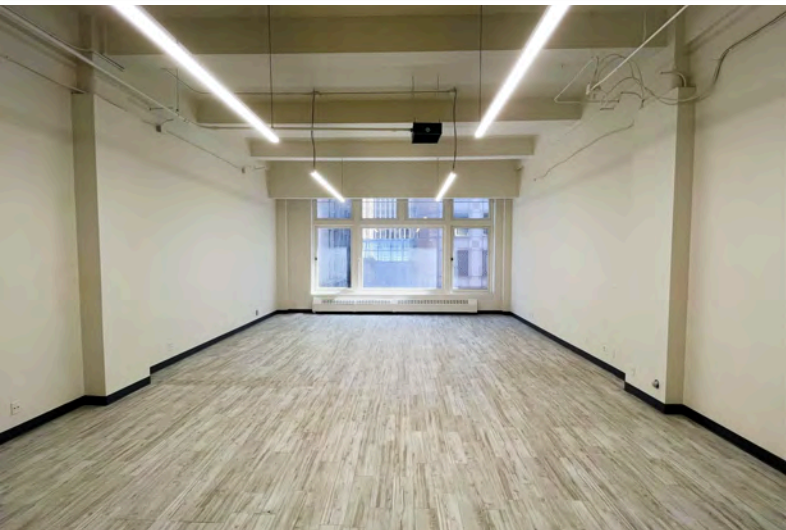
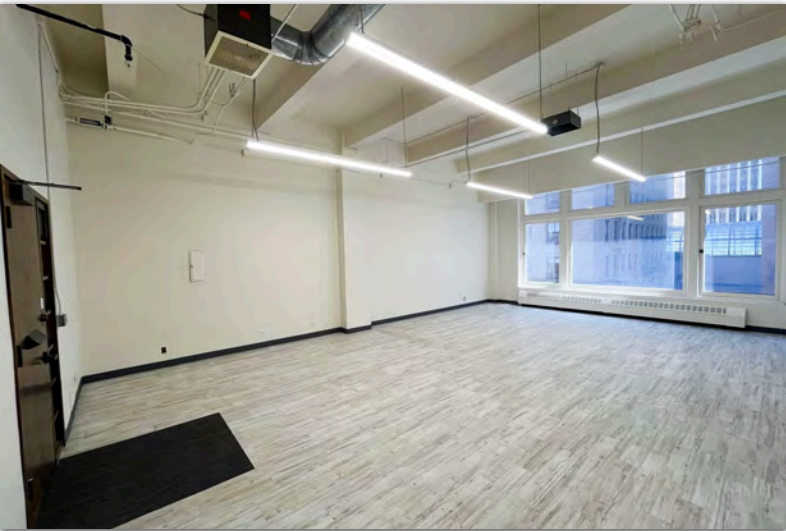
- Turkey Dental Space
- Full HVAC
- High Ceilings
- Operable Windows
- Union Square /FIDI Location



# 133 KEARNY

AVAILABLE NOW:

Suite 300 | 835 RSF | Creative Office Space



## FLOOR PLAN SUITE 300

- Small Creative Office Space
  - Meeting Room
  - Operable Windows
  - Great Natural Light
  - High Ceilings
- Union Square /FIDI Location



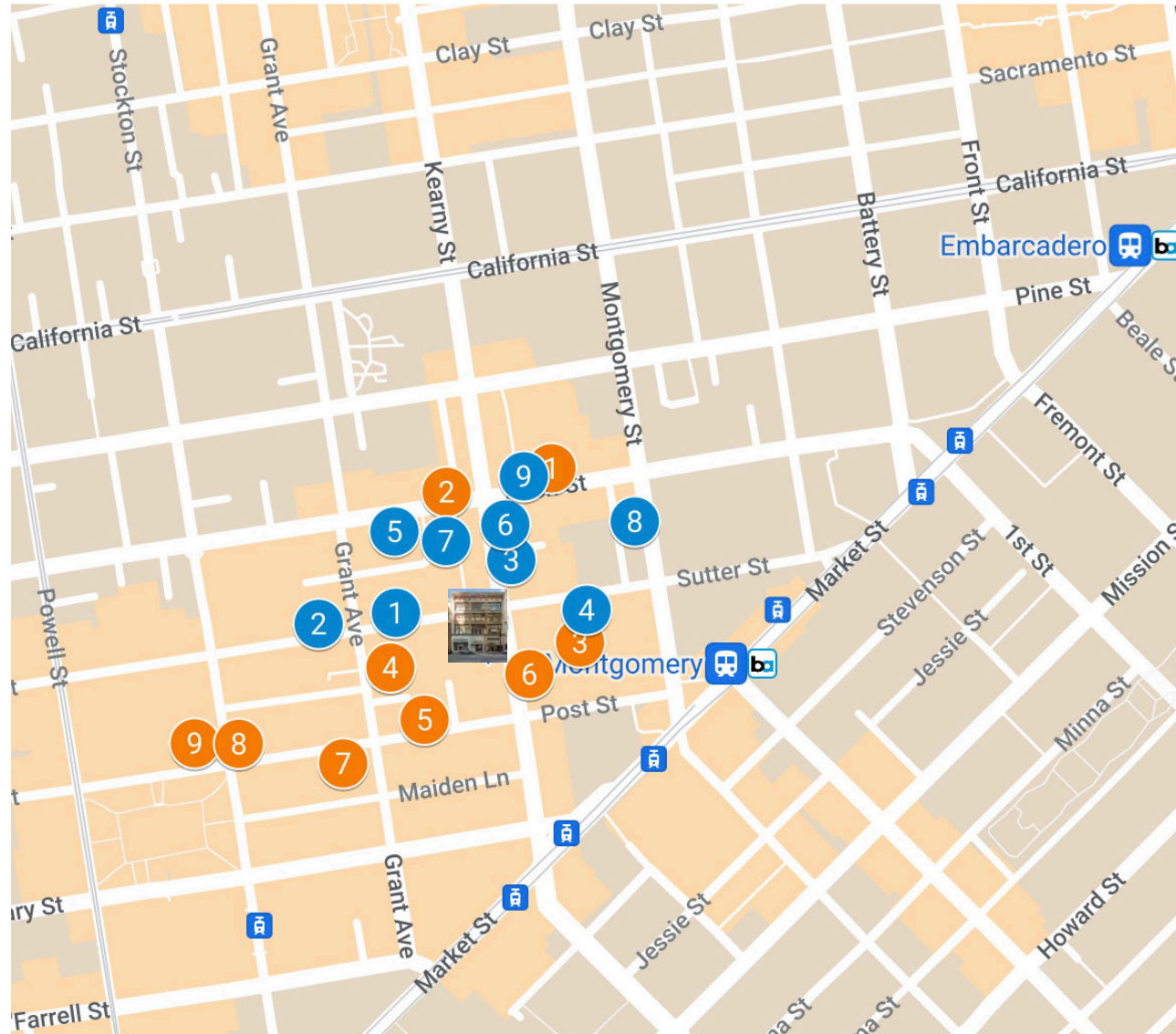
The foregoing is based upon information provided by others which we believe is accurate, however, no guarantee, warranty or representation is made. We recommend that all interested parties independently verify its accuracy and completeness. As well, any projections, assumptions, opinions, or estimates are used for example only and do not represent the current or future performance of the identified property. Your tax, financial, legal and toxic substance advisors should conduct a careful independent investigation of the property and its suitability for your needs, including land use limitations. The property is subject to prior lease, sale, change in price, or withdrawal from the market without notice.

Restaurants & Cafes:

- 1 Posh Bagel
- 2 E&O Kitchen and Bar
- 3 Sushirrito
- 4 Julie's Kitchen
- 5 Le Central
- 6 Rickhouse
- 7 The Irish Bank
- 8 Coffee Bar Montgomery
- 9 Sam's Grill & Seafood Restaurant

Nearby Businesses:

- 1 Twitch
- 2 Academy of Art University - School of Fine Art Sculpture
- 3 Crocker Galleria
- 4 Banana Republic
- 5 Shreve & Co.
- 6 One Montgomery Tower
- 7 Burberry
- 8 Nike San Francisco
- 9 Apple Union Square



**133**  
KEARNY

PLEASE CONTACT EXCLUSIVE AGENTS:

**BRYAN COLTON**

(415) 595-6959

[bryancolton@coltoncommercialsf.com](mailto:bryancolton@coltoncommercialsf.com)

License # 02111407

**JAY D. SHAFFER**

(415) 407-3997

[jshaffer@coltoncommercialsf.com](mailto:jshaffer@coltoncommercialsf.com)

License #: 01444640

**BRADLEY COLTON**

(415) 515-2333

[bcolton@coltoncommercialsf.com](mailto:bcolton@coltoncommercialsf.com)

License #: # 00805116

**TORI DECOITE**

(415) 590-7874

[tdecoite@coltoncommercialsf.com](mailto:tdecoite@coltoncommercialsf.com)

License #: 02042753

