

Excellent Location

±7,000 SF, 8,400 SF or 15,400 SF Available

33 Plan Way, Bldg. #5
Warwick, RI

Property Overview

CBRE is pleased to offer modern industrial flex space for lease at 33 Plan Way, Building 5 in Warwick, Rhode Island. Located within the National Technology Business Park, just off Jefferson Boulevard, the property is less than two miles from Interstate 95, 10 minutes from downtown Providence and one mile from T.F. Green International Airport.

Building Highlights

- + ±15,400 SF total available
- + Unit A: ±8,400 SF
- + Unit B: ±7,000 SF
- + 100% air-conditioned
- + 30 on-site parking spaces
- + Excellent location in the established National Technology Business Park
- + Loading dock and overhead doors
- + Building frontage on Interstate 95
- + 2000 Amp, 240/600 Volt, 3-phase power
- + 8,000 SF fenced in side yard

Flex Units for Lease

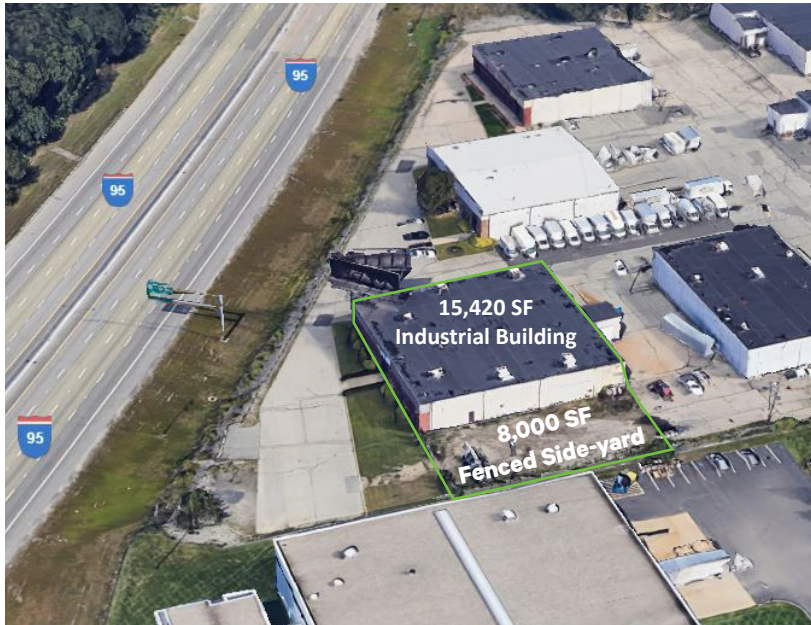


Industrial Flex Space

33 Plan Way, Bldg. #5 | Warwick, RI 02886

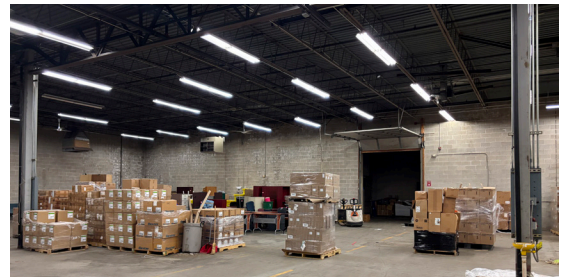
For Lease

Property Location & Specifications

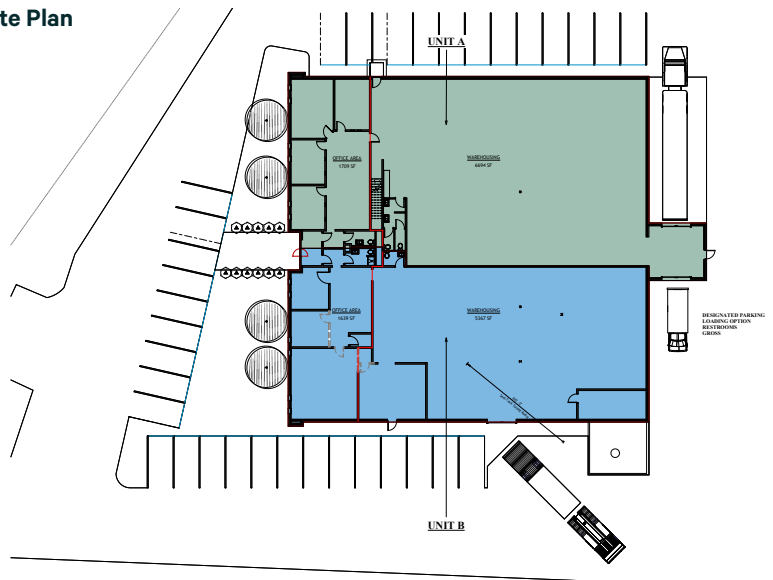


Space Specifications

- + ±15,420 SF total available
- + Unit A: ±8,400 SF
- + Unit B: ±7,000 SF
- + 30 on-site parking spaces
- + 16' clear height
- + 2000 Amp, 240/600 Volt, 3-phase power
- + Loading dock and overhead drive-in door
- + 8' x 8' loading dock with leveler
- + 10' x 12' ground level OHD
- + Wet sprinkler system



Site Plan



Contact Us

Daniel Cregan

Vice President

+1 401 621 4340

dan.cregan@cbre.com

© 2025 CBRE, Inc. All rights reserved. This information has been obtained from sources believed reliable, but has not been verified for accuracy or completeness. You should conduct a careful, independent investigation of the property and verify all information. Any reliance on this information is solely at your own risk. CBRE and the CBRE logo are service marks of CBRE, Inc. All other marks displayed on this document are the property of their respective owners, and the use of such logos does not imply any affiliation with or endorsement of CBRE. Photos herein are the property of their respective owners. Use of these images without the express written consent of the owner is prohibited.