



2400 Wayne Memorial Drive, Suite B

Goldsboro, NC 27534



medical office for sale

location

Wayne Medical Pavilion

availability

2,096± SF

sale price

Call for pricing

other

- Great Investment Property!
- Property has been leased to a long term tenant as of December 2018.
- More information available when an offer has been accepted.



FOR MORE INFO, PLEASE CONTACT:

BOB LOGAN | APRIL WOMBLE

919.735.1876 | 919.429.4018

logan@waynerealty.com

WAYNE REALTY COMMERCIAL

304 E. Walnut Street
Goldsboro, NC 27530

This information has been secured from sources we believe to be reliable, but Wayne Realty Commercial makes no representations or warranties, expressed or implied, as to the accuracy of the information.



SALES - LEASING - INSURANCE - APPRAISALS

2400 Wayne Memorial Drive Suite B
Goldsboro, NC 27534



FOR MORE INFO, PLEASE CONTACT:

BOB LOGAN | APRIL WOMBLE

919.735.1876 | 919.429.4018

logan@waynerealty.com

WAYNE REALTY COMMERCIAL

304 E. Walnut Street

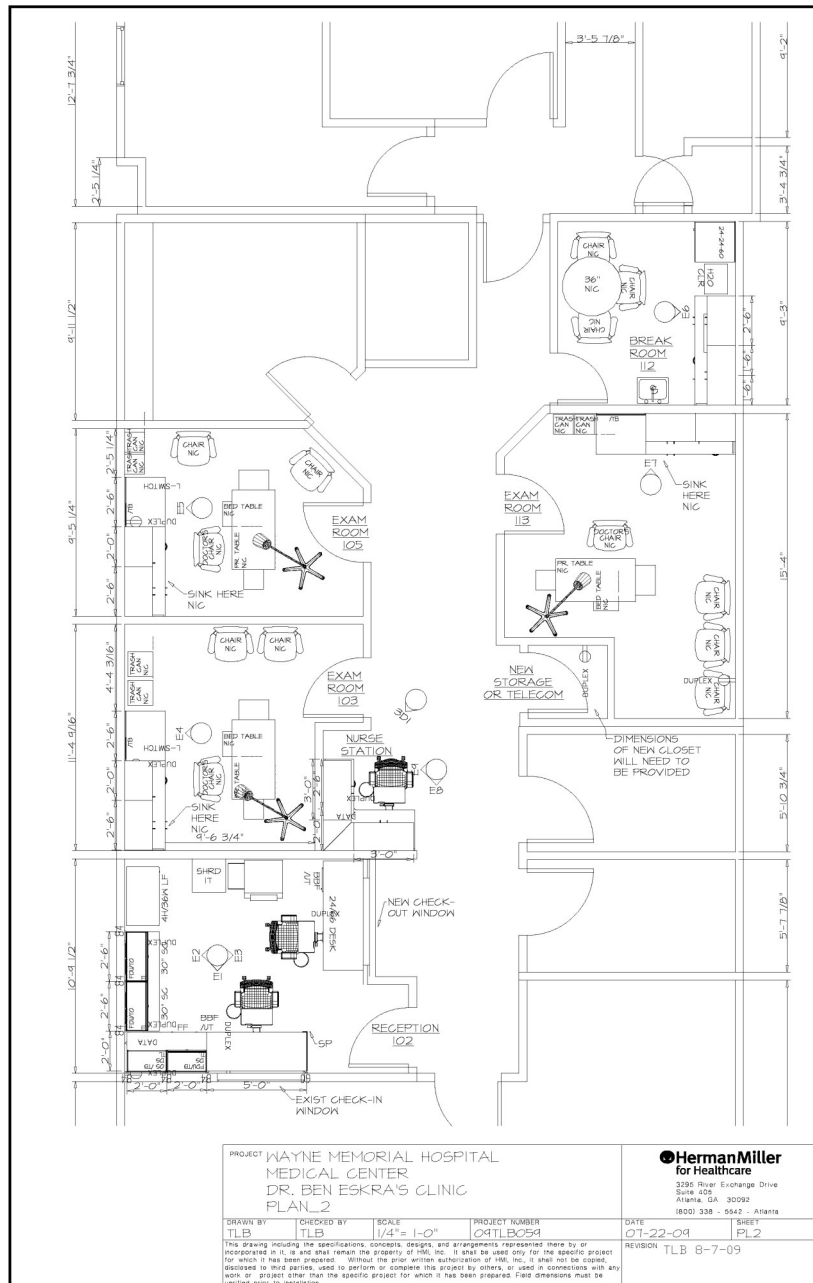
Goldsboro, NC 27530

This information has been secured from sources we believe to be reliable, but Wayne Realty Commercial makes no representations or warranties, expressed or implied, as to the accuracy of the information.



SALES - LEASING - INSURANCE - APPRAISALS

2400 Wayne Memorial Drive Suite B
Goldsboro, CN 27534



FOR MORE INFO, PLEASE CONTACT:
BOB LOGAN | APRIL WOMBLE
919.735.1876 | 919.429.4018
logan@wayne-realty.com

WAYNE REALTY COMMERCIAL
304 E. Walnut Street
Goldsboro, NC 27530

This information has been secured from sources we believe to be reliable, but Wayne Realty Commercial makes no representations or warranties, expressed or implied, as to the accuracy of the information.