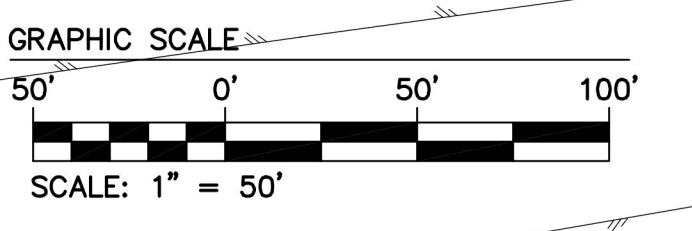
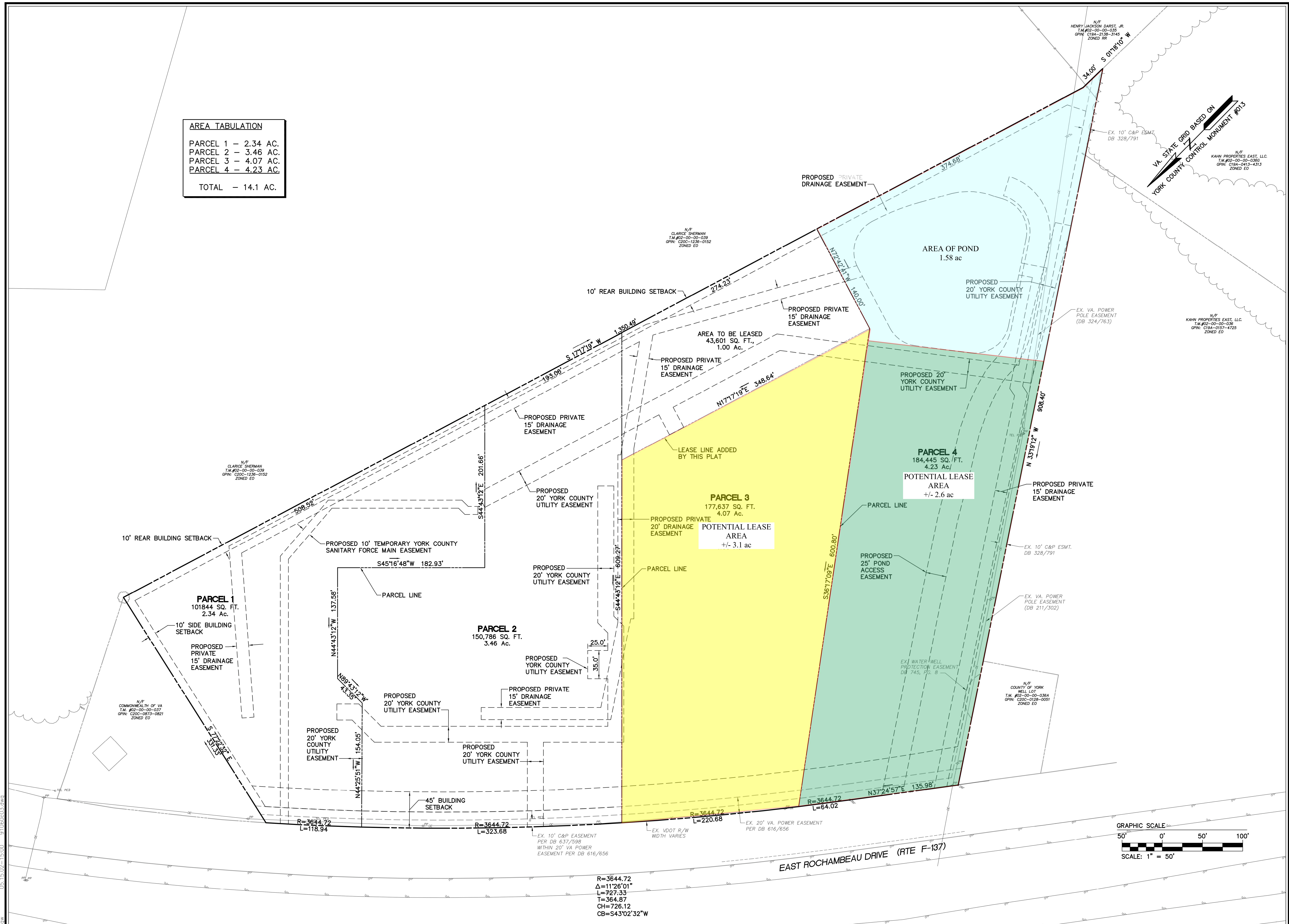
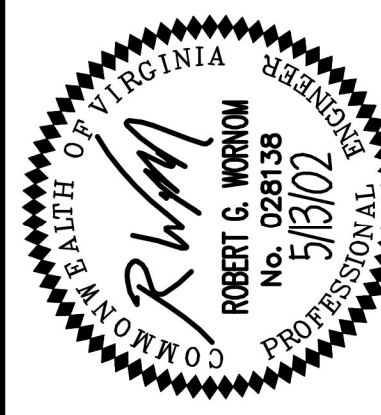


AREA TABULATION	
PARCEL 1	- 2.34 AC.
PARCEL 2	- 3.46 AC.
PARCEL 3	- 4.07 AC.
PARCEL 4	- 4.23 AC.
<b>TOTAL</b>	<b>- 14.1 AC.</b>



R=3644.72  
 $\Delta=11^{\circ}26'01''$   
 L=727.33  
 T=364.87  
 CH=726.12  
 CB=S43'02'32"W

No.	DATE	REVISION / COMMENT / NOTE	BY
3	15/13/02	REVISED PER YORK COUNTY COMMENTS	RCW
2	14/19/02	REVISED PER YORK COUNTY AND UDOT COMMENTS	RCW
1	1/7/02	REVISED PER YORK COUNTY AND UDOT COMMENTS	RCW



5248 Old Towne Road, Suite 1  
 Williamsburg, Virginia 23188  
 (757) 253-0040  
 Fax (757) 220-8994



**PRELIMINARY PLAT**  
**WILLIAMSBURG MOTORS**  
 OWNER/DEVELOPER: WILLIAMSBURG MOTORS, INC.  
 BRUTON DISTRICT YORK COUNTY VIRGINIA

Designed ARH	Drawn HBK
Scale 1"=50'	Date 1/8/02
Project No. 9106-0	
Drawing No. 3 OF 17	