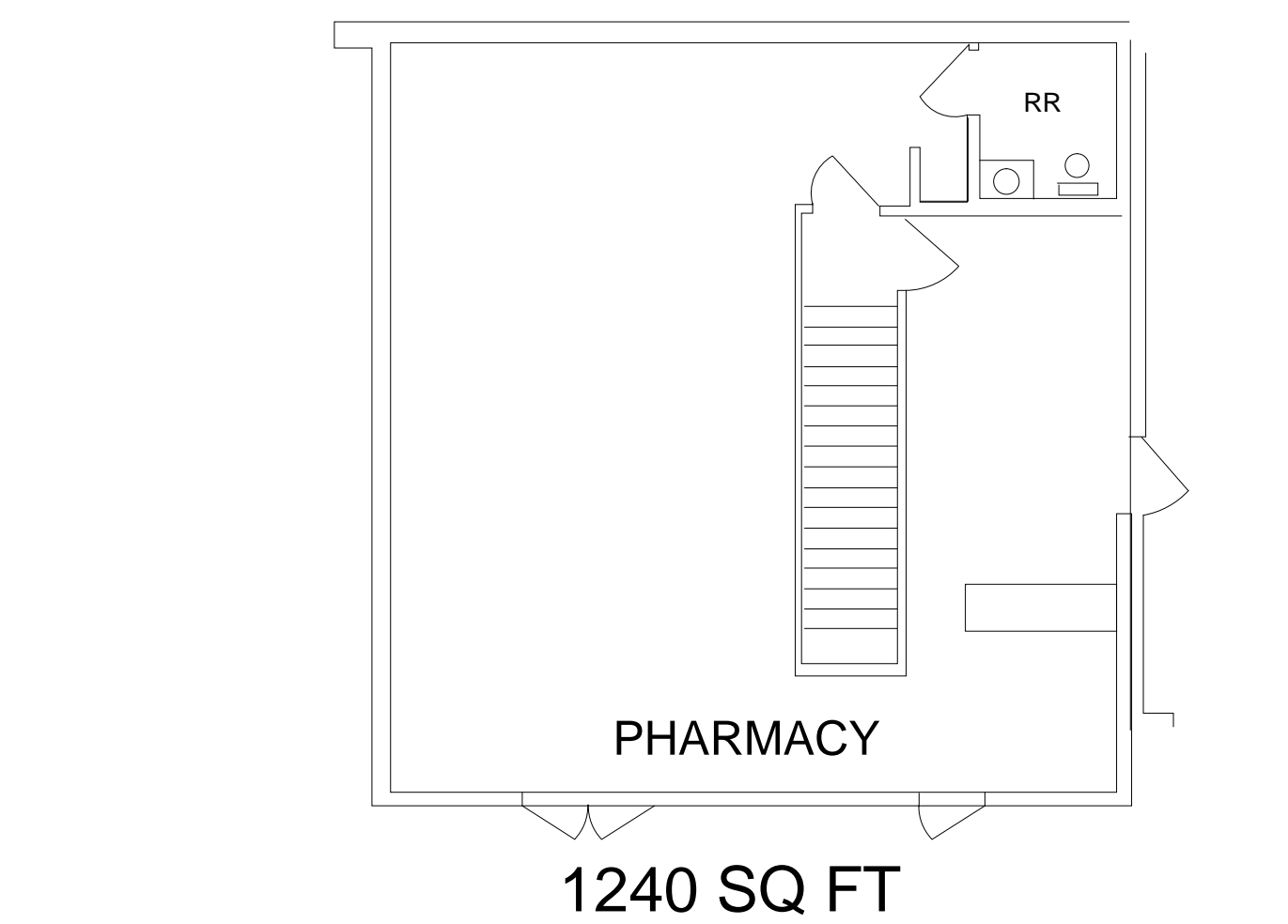
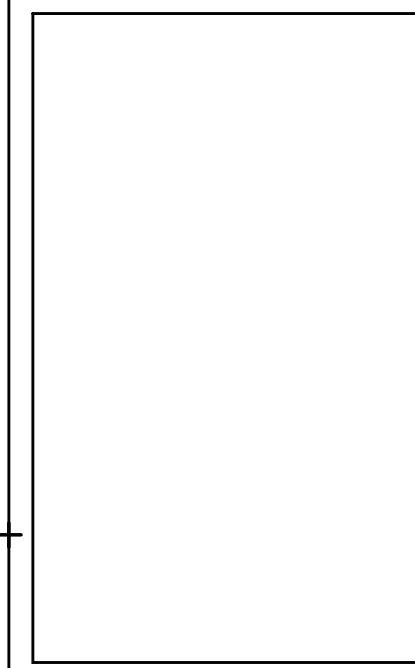
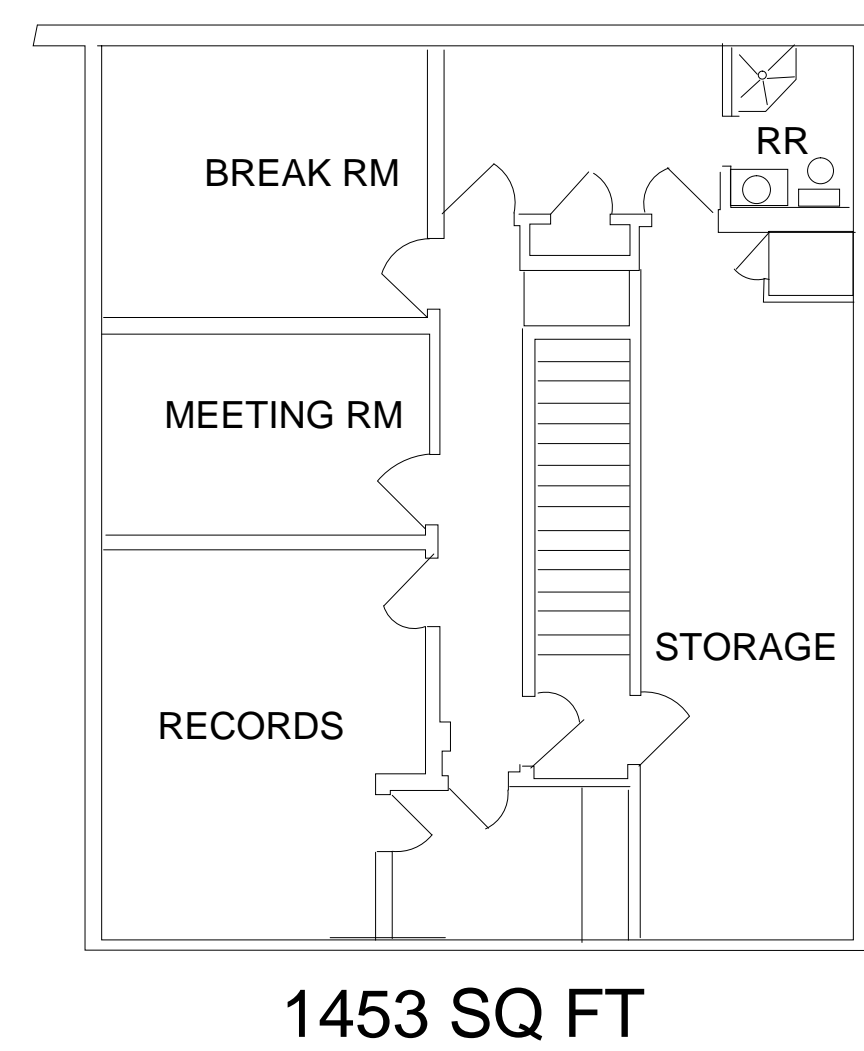


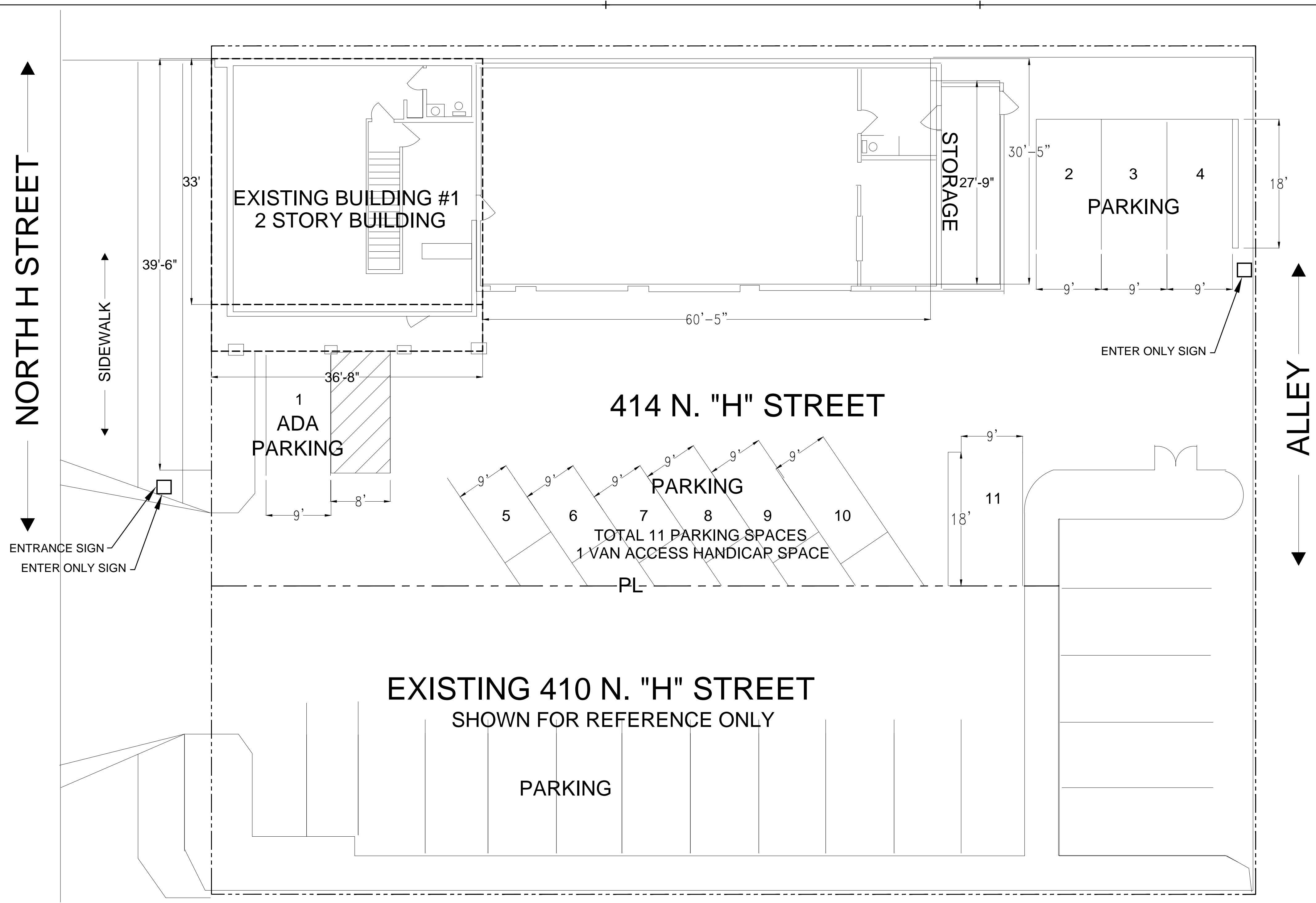
414 N. "H" ST  
 LOMPOC, CA 93436



**BUILDING #1 1ST FLOOR PLAN**  
 410 N. "H" ST. SCALE: 1/8" = 1'-0"



**BUILDING #1 2ND FLOOR PLAN**  
 410 N. "H" ST. SCALE: 1/8" = 1'-0"



**SITE PLAN**  
 SCALE: 1/8" = 1'-0"