

# Centre Plaza

OFFICE SPACES FOR LEASE

45 NE Loop 410, San Antonio, TX 78216

Up to ±9,777 SF  
Available

Near 410 and 281  
Corridor

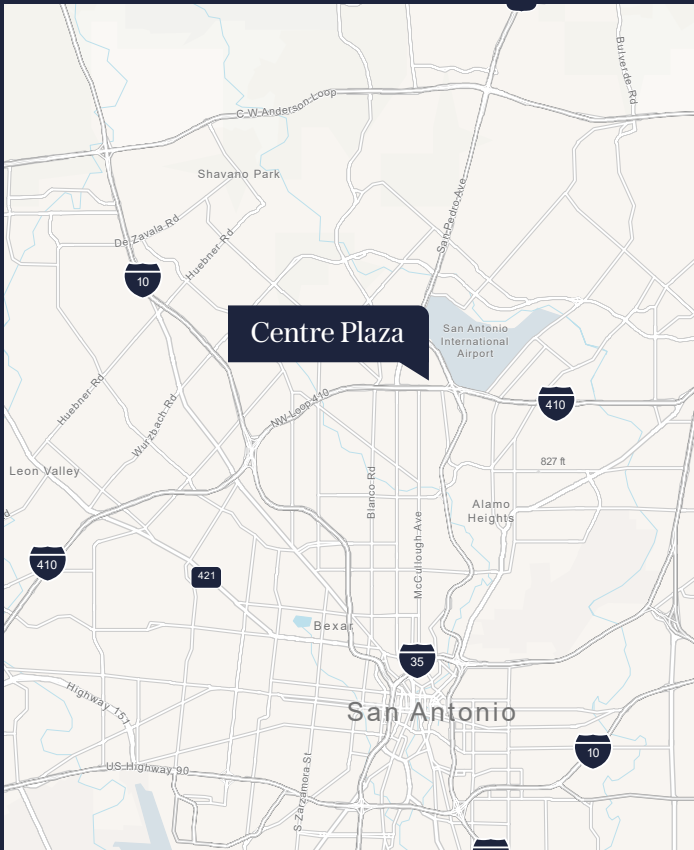




## Modern Convenience

Centre Plaza, owned and managed by Spire, offers renovated exterior landscaping and building entries, upgraded common areas. The building provides structured parking with a 3.5:1,000 ratio, covered and reserved options, plus convenient on-site banking and an automated deli.

- Renovated exterior landscaping and building entries
- Structured parking with a 3.5:1,000 parking ratio
- Covered and reserved parking available
- Common area renovations
- On-site banking
- On-site automated deli



## Location Overview

Centre Plaza, located at 45 NE Loop 410 in San Antonio, Texas, is ideally positioned along the Loop 410 Corridor, just minutes from San Antonio International Airport. This central location provides excellent accessibility for both businesses and commuters. The property is also conveniently close to North Star Mall and is surrounded by a diverse selection of nearby retail, dining and service amenities.

## LOCATION HIGHLIGHTS

- Immediate access to Loop 410 and major arterial roadways
- Surrounded by established business, retail, and hospitality destinations





**CONFERENCE ROOM**

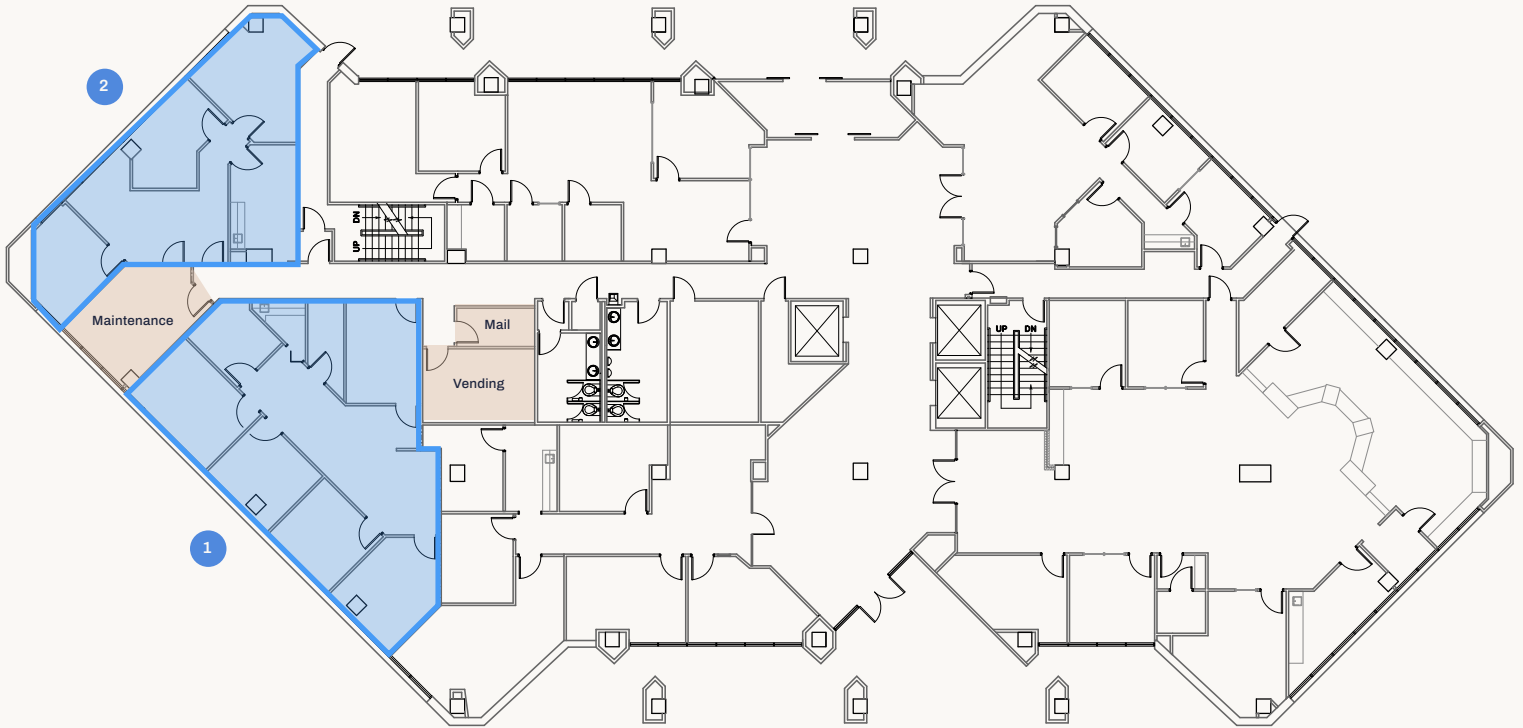
Modern, tenant-exclusive conference room conveniently located on the second floor of Centre Plaza.



45 NE LOOP 410  
SAN ANTONIO, TX 78216

# First Floor

±1,174 SF – ±1,526 SF AVAILABLE



---

1 SUITE 115 1,526 SF

---

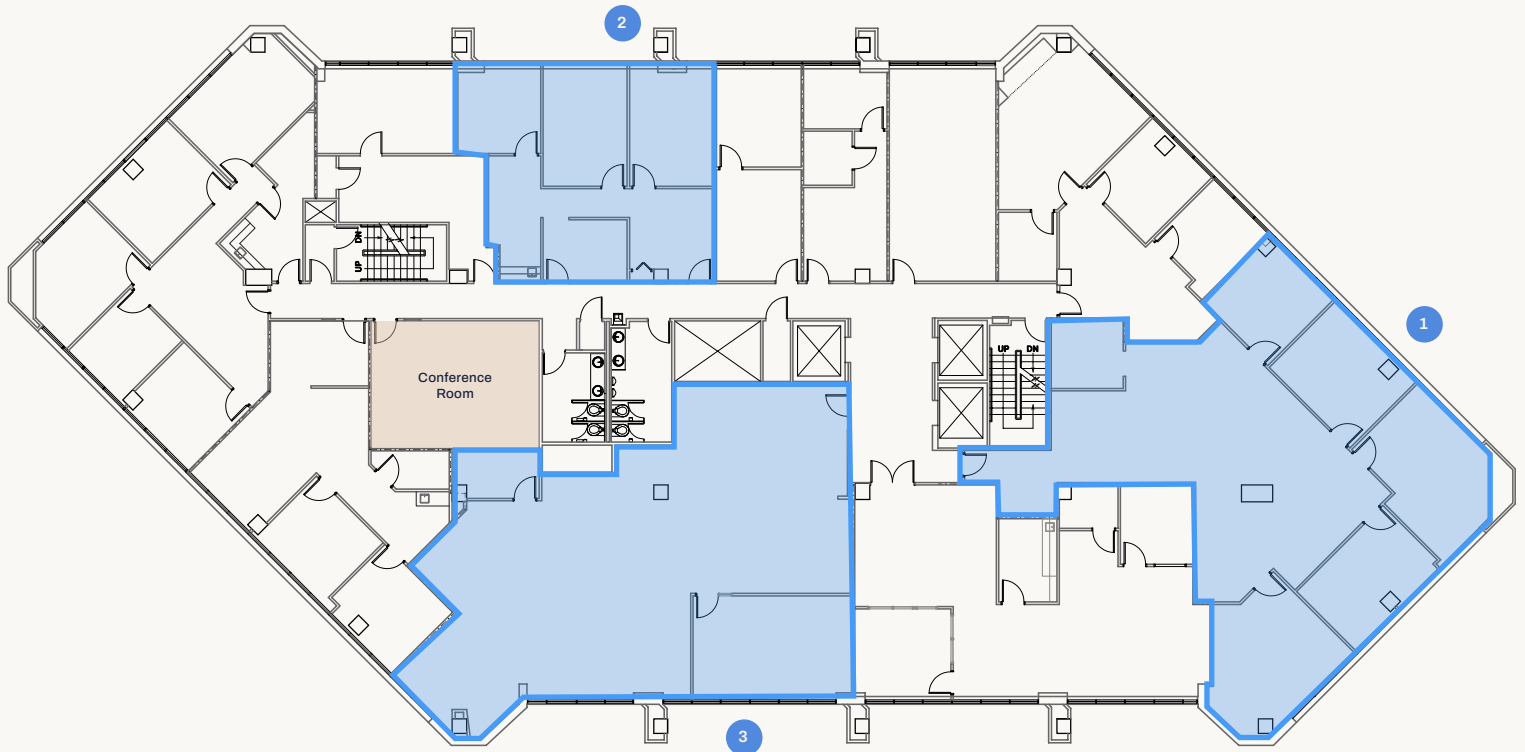
2 SUITE 125 1,174 SF

---



# Second Floor

±1,150 SF – ±2,753 SF AVAILABLE



---

1	SUITE 200	2,753 SF
---	-----------	----------

---

2	SUITE 211	1,150 SF
---	-----------	----------

---

3	SUITE 215	2,591 SF
---	-----------	----------

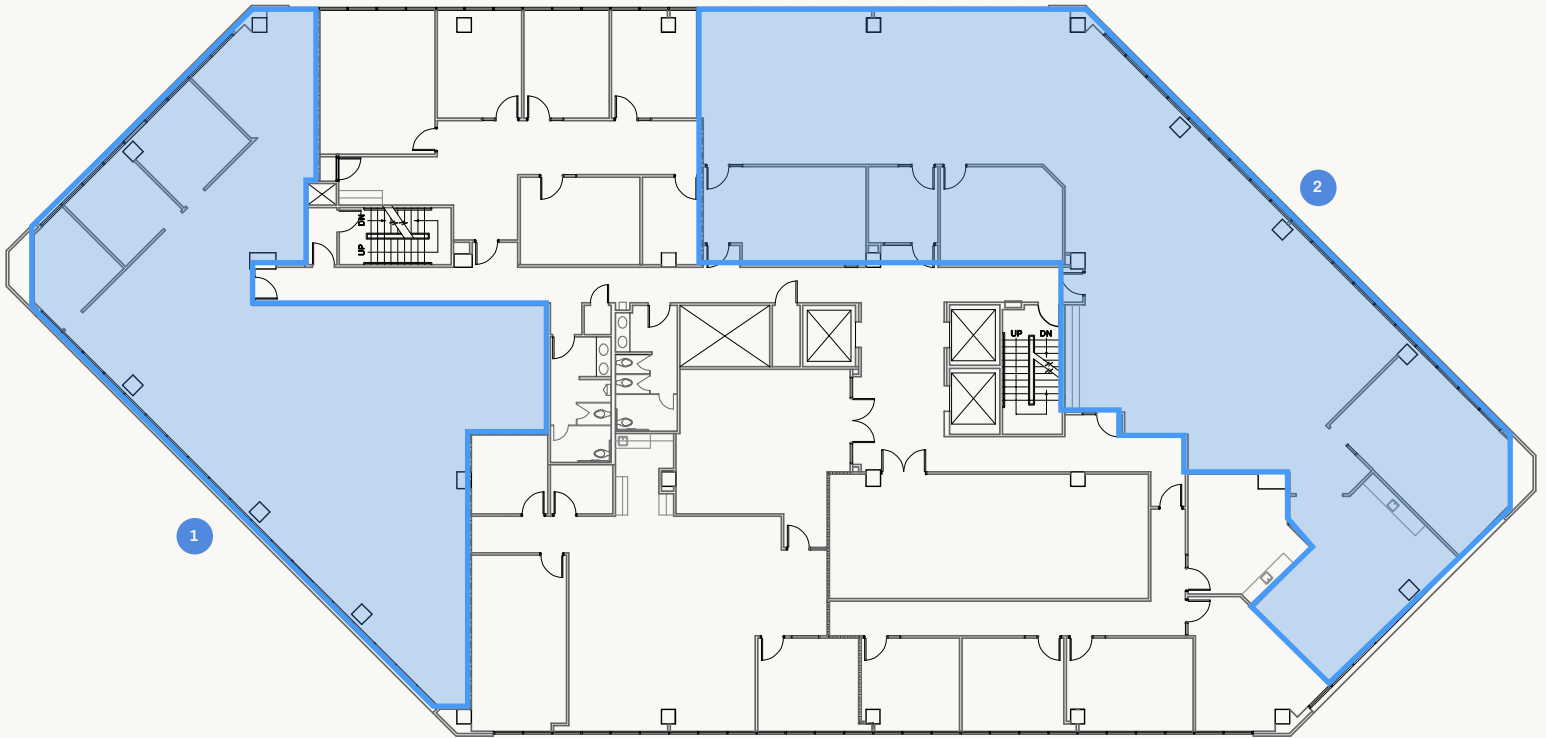
---



45 NE LOOP 410  
SAN ANTONIO, TX 78216

# Third Floor

±3,543 SF – ±5,231 SF AVAILABLE



---

1 SUITE 325 3,543 SF

---

2 SUITE 350 5,231 SF

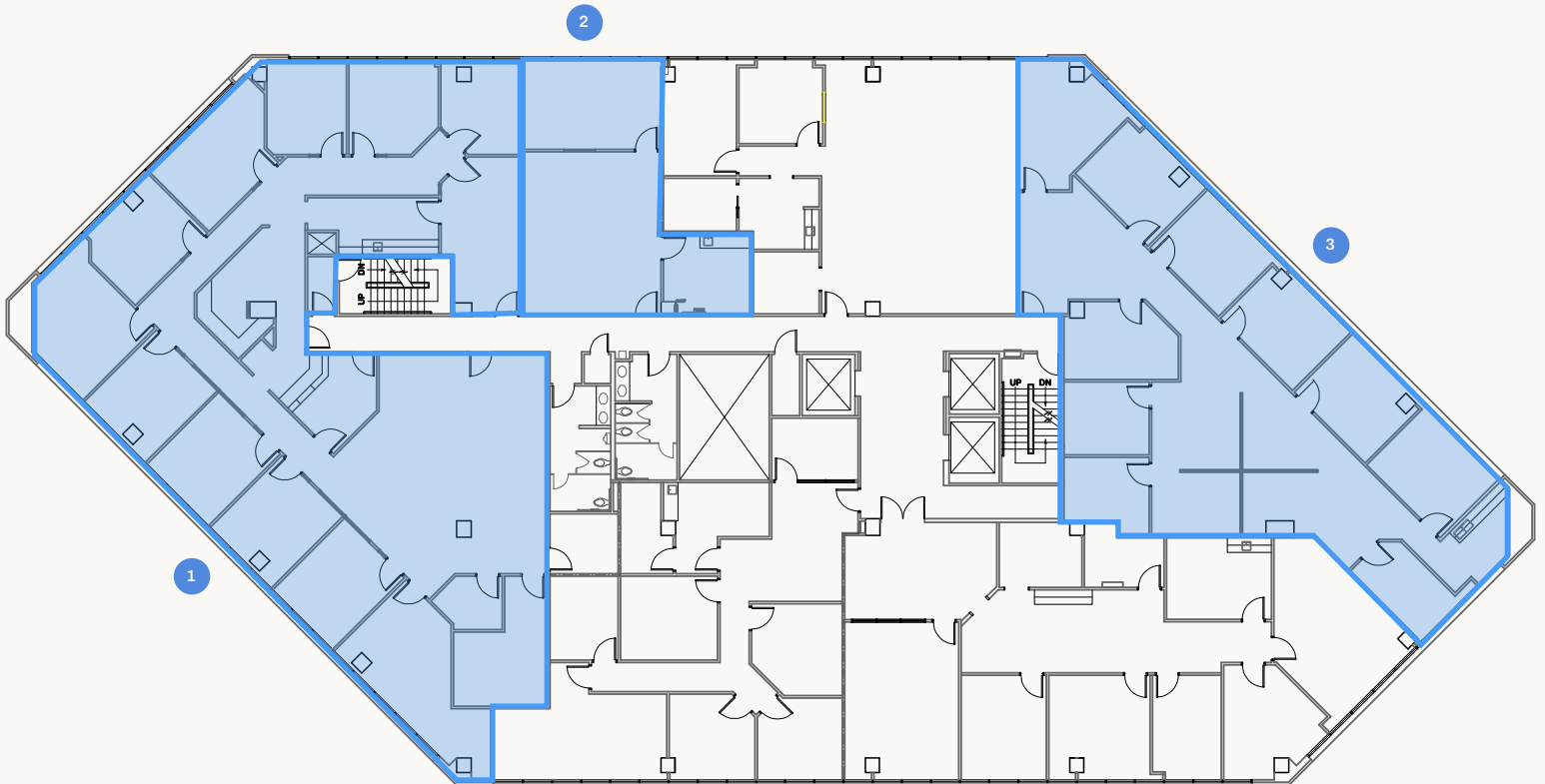
---



45 NE LOOP 410  
SAN ANTONIO, TX 78216

# Fourth Floor

UP TO ±5,979 SF AVAILABLE



---

1 SUITE 420 \* 5,009 SF

---

2 SUITE 435 \* 970 SF

---

3 SUITE 480 3,103 SF

---

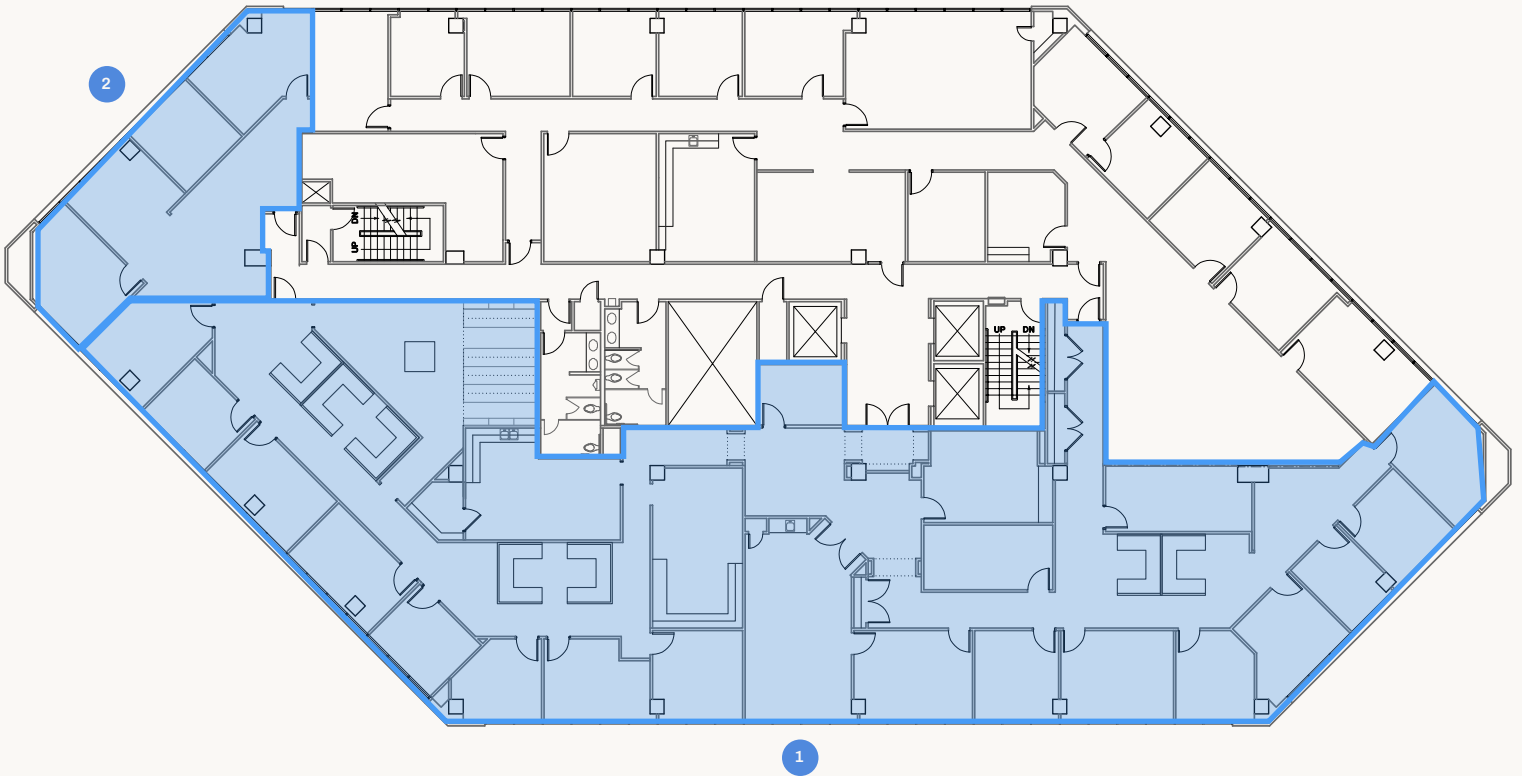
\*Contiguous to 5,979 SF



45 NE LOOP 410  
SAN ANTONIO, TX 78216

# Seventh Floor

UP TO ±9,777 SF AVAILABLE



---

1 SUITE 700 \* 8,505 SF

---

2 SUITE 705 \* 1,272 SF

---

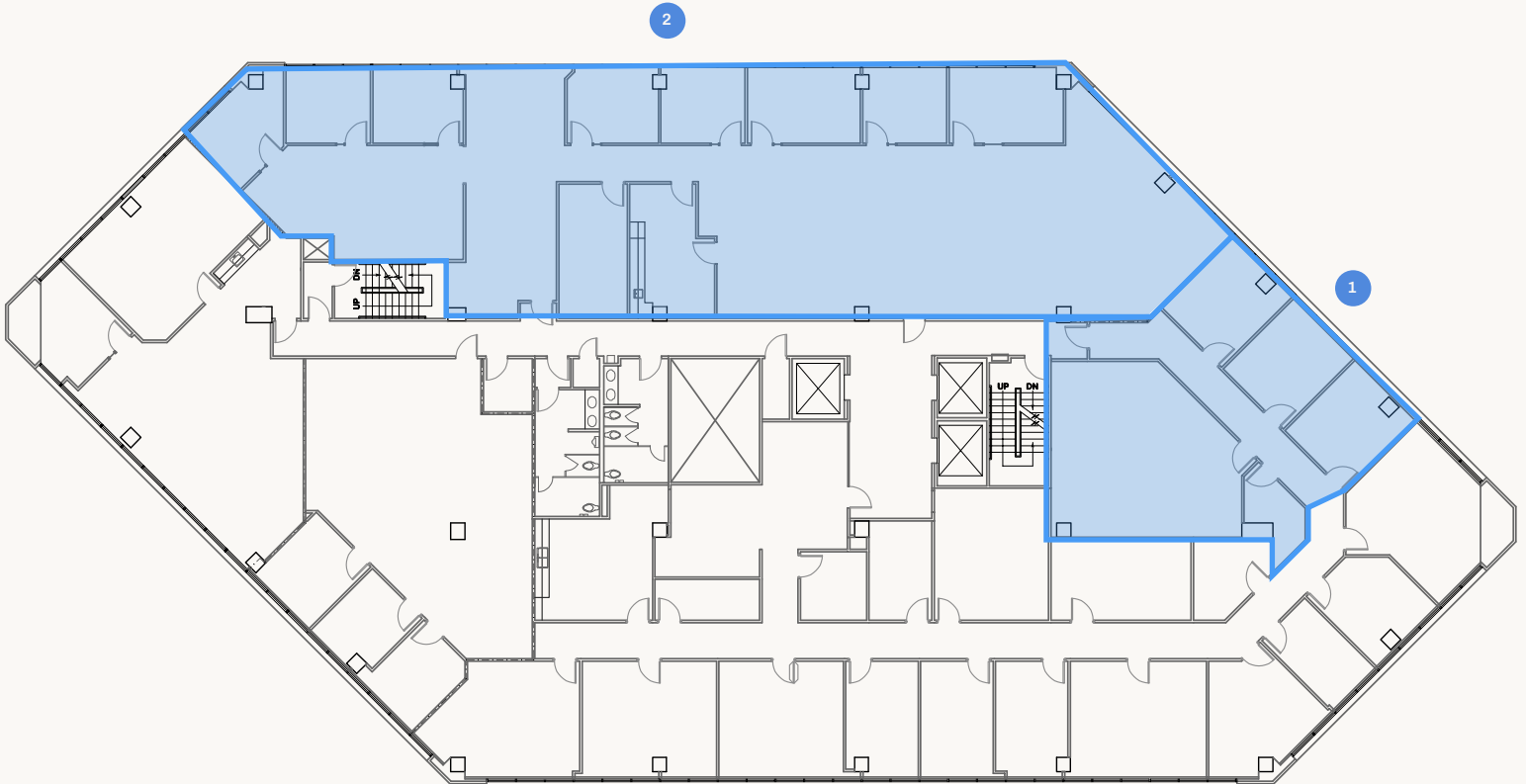
\*Contiguous to 9,777 SF



45 NE LOOP 410  
SAN ANTONIO, TX 78216

# Eighth Floor

±6,401 SF AVAILABLE



---

1 SUITE 815 1,509 SF

---

2 SUITE 850 4,892 SF

---

*\*Suite 850 available January 1, 2027*





 Transwestern

Luis Garza, CCIM

Vice President  
(210) 253-2947  
luis.garza@transwestern.com

 CENTRE  
PLAZA

PROUDLY OWNED & MANAGED BY

SPIRE