

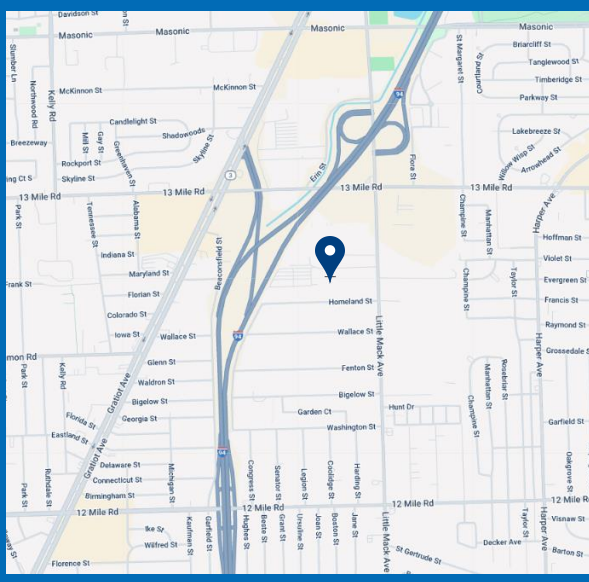
NOW AVAILABLE FOR LEASE



20220 Cornillie

Roseville, MI

13,697 Square Feet



Property Highlights

- Exterior Truckwell
- Renovated Offices
- Very Clean Shop
- 3 Phase Power
- 13 Mile & Little Mack

For information, please contact:

Mike Davidson
 Senior Managing Director
 t 248-357-6599
 mike.davidson@nmrk.com

39400 Woodward Ave., Suite 100
 Bloomfield Hills, MI 48304



Licensed in Michigan as Newmark Real Estate
 The information contained herein has been obtained from sources deemed reliable but has not been verified and no guarantee, warranty or representation, either express or implied, is made with respect to such information. Terms of sale or lease and availability are subject to change or withdrawal without notice.

INDUSTRIAL – Lease

20220 Cornillie
Roseville, MI



Total Building Size: 13,697
Total Available: 13,697
Age: 1988
Factory: 11,950
Office: 1,747
Minimum Divisible: 13,697
Zoned: I-1

Lease Rate: \$8.15/SF NNN
Monthly Rate: \$9,302
Taxes: \$19,148.11

Property Details

| | | | |
|-------------|-------|--------------|---------------------------|
| Acreage: | .81 | Power: | 1,000 A, 240 V, 3 Phase |
| Frontage: | 130' | Buss: | |
| Depth: | 270' | Lights: | T-5 Fluorescent |
| Parking: | Ample | Truckwell: | Ext. Covered with Leveler |
| Expandable: | | Grade Door: | 12' x 14'; 8' x 10' |
| Storage: | | Heating: | Gas Forced Air |
| Clearance: | 18' | A/C: | Office |
| Bay Size: | 45' | Sprinklered: | |
| Lavatories: | 4 | Airlines: | Yes |
| Crane: | | Compressor: | Possible |
| Underhook: | | Floordrains: | |

Additional Information:

1st class manufacturing facility that looks brand new. Very clean with sealed shop floors. Renovated offices. Covered exterior truckwell. Skylights. Located at 13 Mile & Little Mack. Additional offices, breakroom & conference room built out into shop.

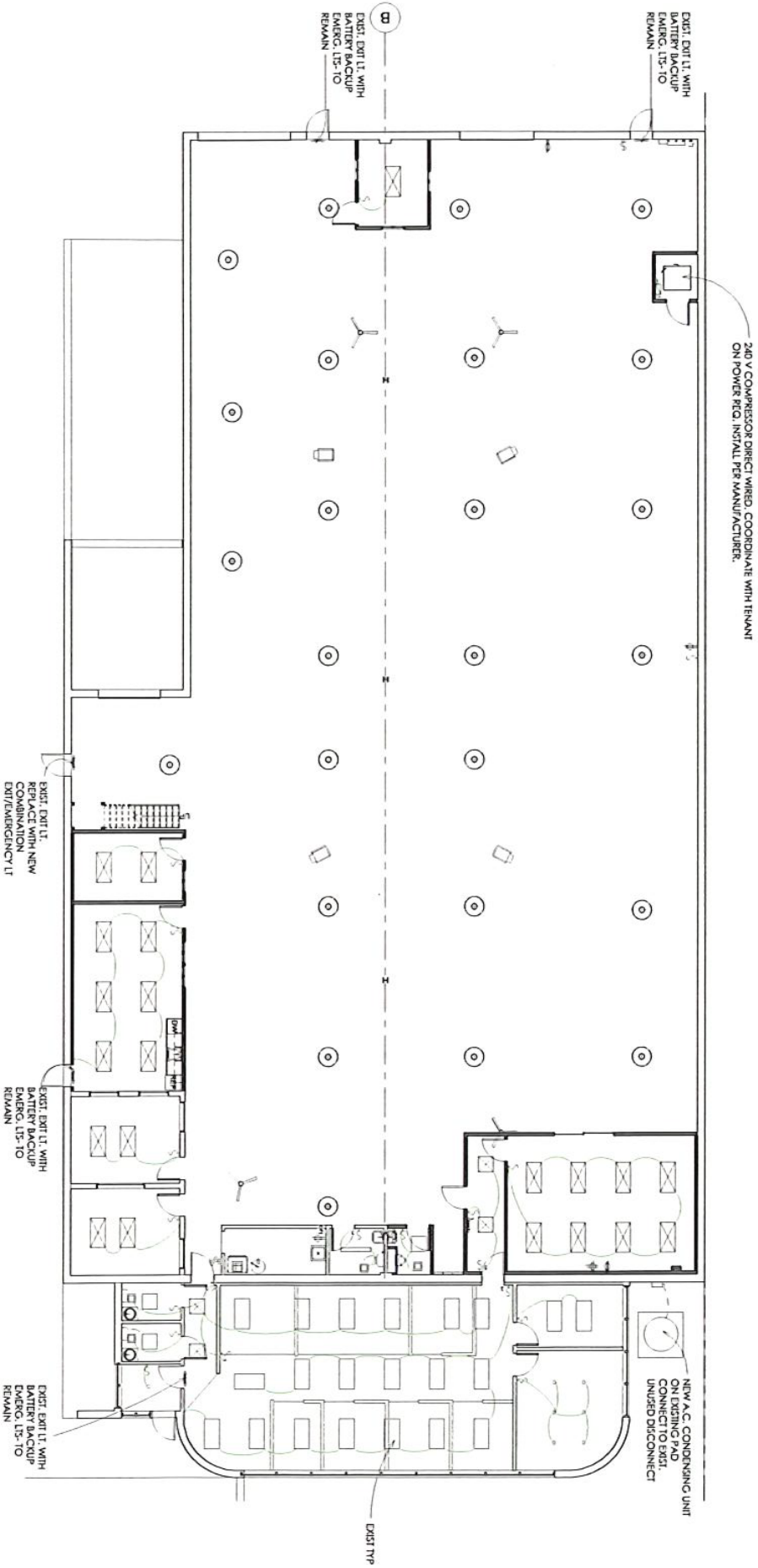
Contact Information:

[Mike Davidson](#)

248-357-6599

mike.davidson@nrmk.com

NEWMARK





NEWMARK