

# ± 80,527 SF For Sale or Lease

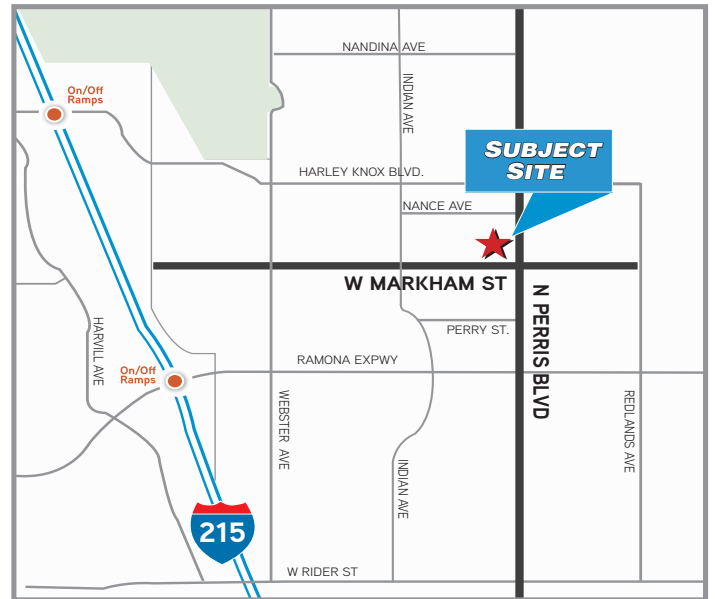


## Property Features

- > +/- 80,527 SF Industrial Warehouse
- > 2,262 SF of 2-Story Office Area
- > ESFR Sprinkler System
- > 10 Dock High Doors (9' x 10') with Fans, Lights, and Z-Guards, 7 w/ Pit Levelers, 3 w/ EOD Levelers
- > 2 Grade Level Doors (12' x 14')
- > 30' Warehouse Clearance Height
- > Large Secured Truck Court
- > 1200 Amps of Power (480/277 V), 2500 AMP UGPS
- > LED Lighting
- > Zoning: Light Industrial
- > Easy I -215 Freeway Access w/ Corporate Neighbors that include Amazon, Home Depot & Ross Stores

*Specifications to be Independantly Verified*

## Locator Map



[Zoning Map](#)

[Perris Valley Specific Plan](#)



IAN DEVRIES | 949.724.5509  
Vice Chairman  
DRE# 01019868  
ian.devries@colliers.com

CHRIS DEVRIES, SIOR | 949.724.5504  
Executive Vice President  
DRE# 01867314  
chris.devries@colliers.com

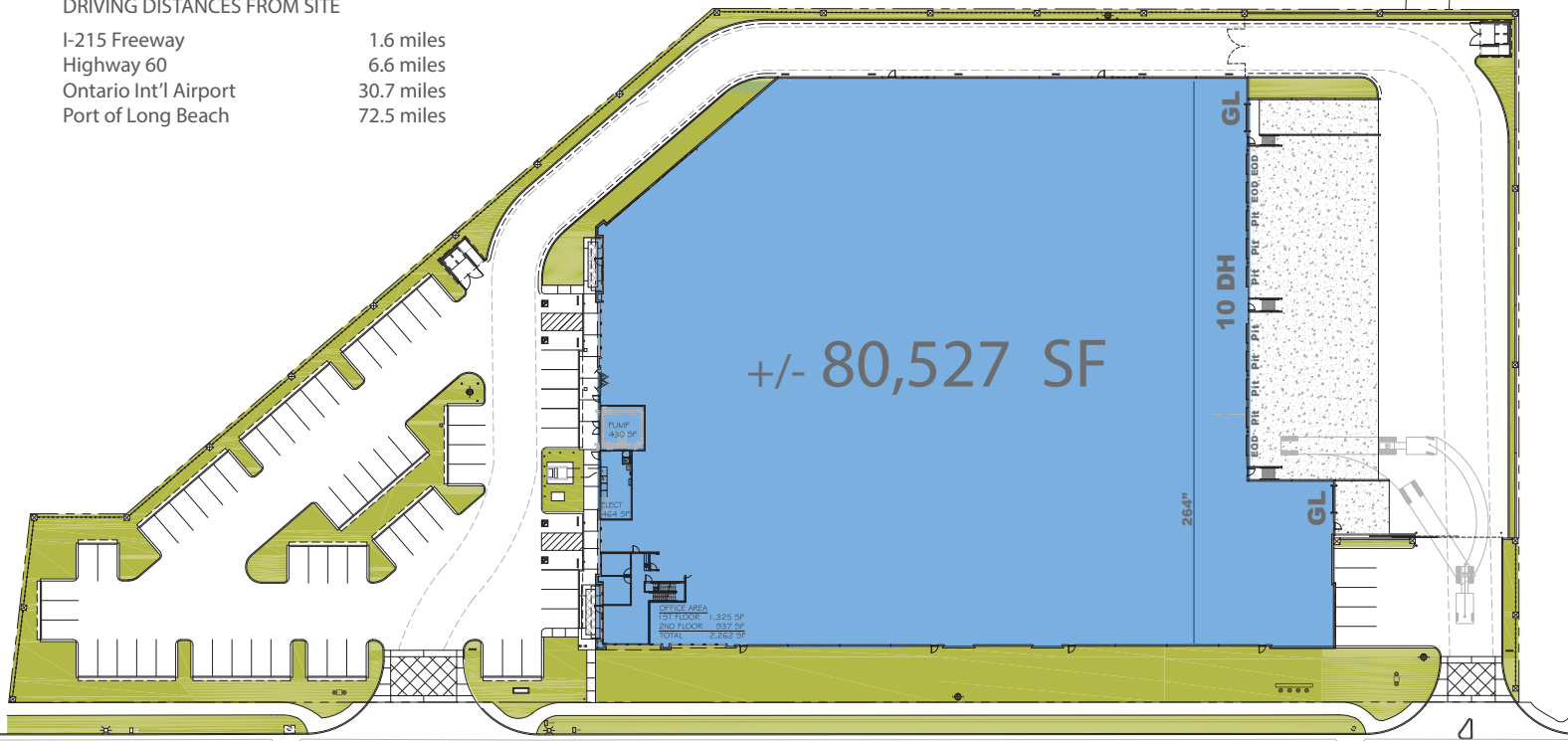
# For Sale or Lease, Perris +/- 80,527 SF Industrial Warehouse



## Property Site Plan

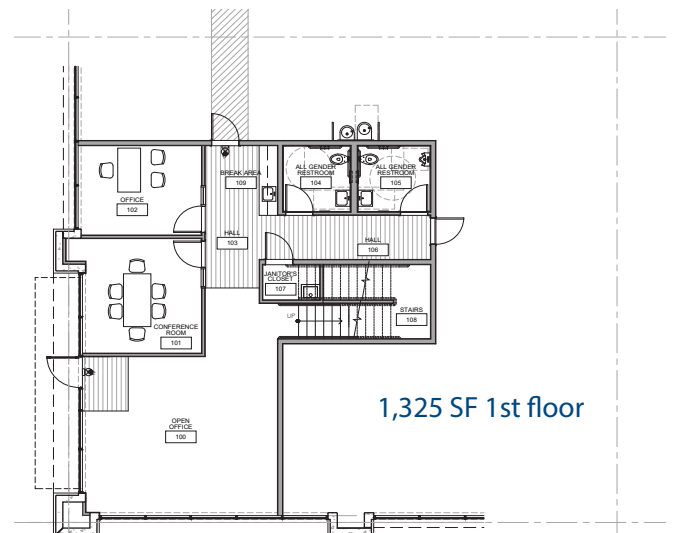
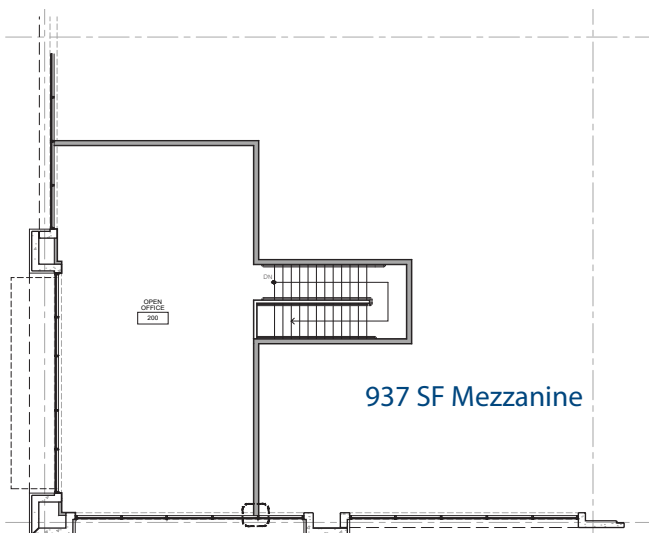
### DRIVING DISTANCES FROM SITE

|                       |            |
|-----------------------|------------|
| I-215 Freeway         | 1.6 miles  |
| Highway 60            | 6.6 miles  |
| Ontario Int'l Airport | 30.7 miles |
| Port of Long Beach    | 72.5 miles |



W. MARKHAM STREET

## Existing Office Layout



IAN DEVRIES | 949.724.5509  
Vice Chairman  
ian.devries@colliers.com  
DRE# 01019868

CHRIS DEVRIES, SIOR | 949.724.5504  
Executive Vice President  
chris.devries@colliers.com  
DRE# 01867314









IAN DEVRIES | 949.724.5509  
Vice Chairman  
DRE# 01019868  
ian.devries@colliers.com

CHRIS DEVRIES, SIOR | 949.724.5504  
Executive Vice President  
DRE# 01867314  
chris.devries@colliers.com