

INBOUND

# 4404 S BELTWOOD PKWY

FOR SALE OR LEASE / 161,404 SF OF HEAVY POWER INDUSTRIAL





# THE PROJECT

M2G VENTURES

## HIGHLIGHTS

4404 Beltwood is located in the heart of Farmers Branch, TX. The asset totals 161,094 SF in two industrial buildings siting on roughly 9.75 acres with the following amenities:

- Infill Location within the Northwest Quadrant of I635 and the Dallas North Tollway
- Existing Heavy Power with Ability to Add More Through the Adjacent Substation
- Approximately 3.6 Acres of Paved Surface Parking or Outside Storage with Ability to Add More and Secure
- Ability to Section Off or Multi-Tenant the Asset
- Ability to Add Oversize Grade-Level Doors in the Primary Warehouse

## RECENT UPGRADES TO BUILDING 1

- New Roof
- Exterior Has Been Painted
- Office Portion Has Been White-Boxed
- Warehouse Portion Has Been White-Boxed
- New Led Lighting in Warehouse
- New Dock Doors Throughout
- Updated Landscaping and Newly Paved Sections of Truck Court

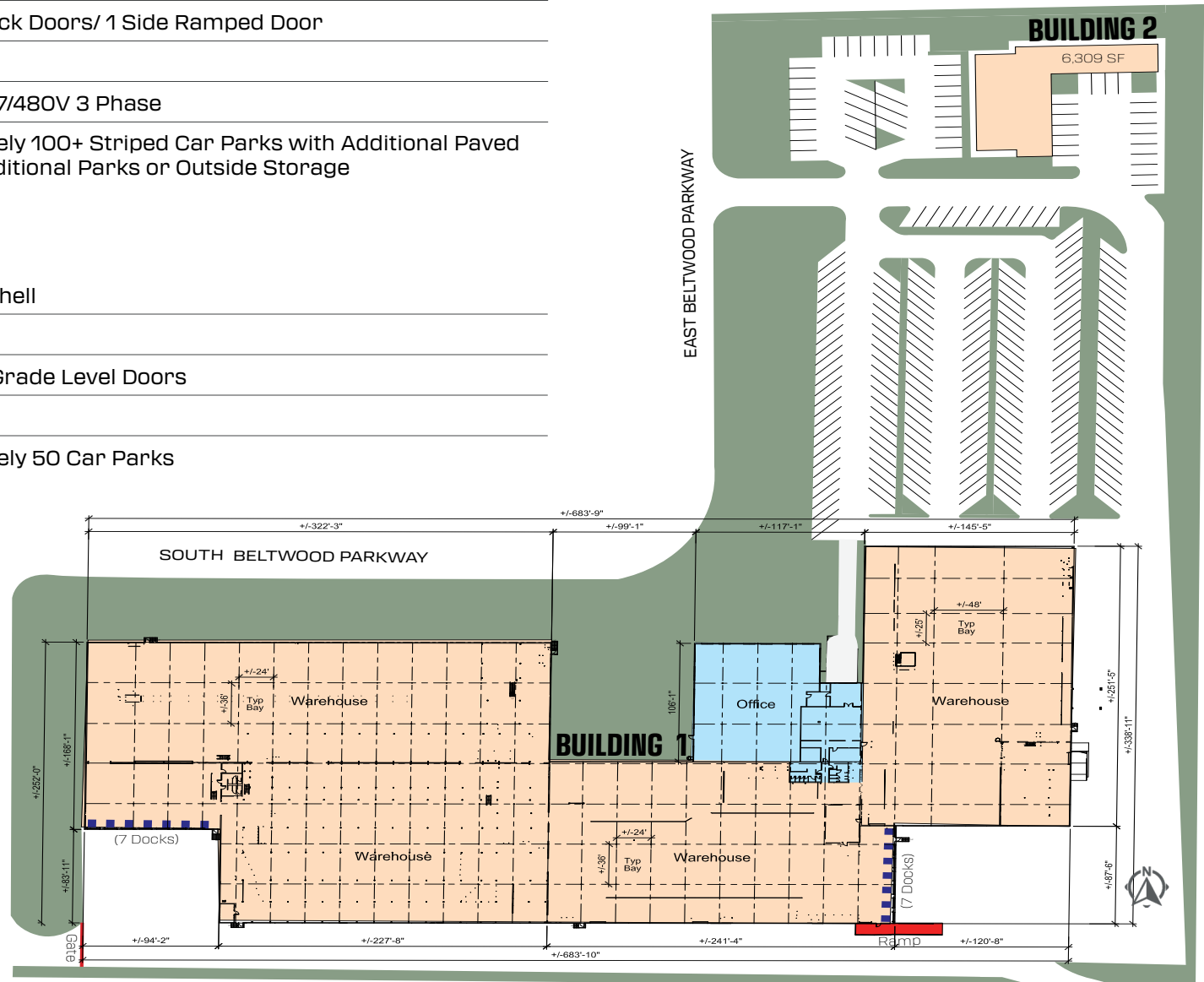


# BUILDING 1

Size	±154,785 SF
Office	±11,491 SF
Clear Height	24' Clear
Loading	14 (9x10) Dock Doors/ 1 Side Ramped Door
Sprinklered	Yes
Electrical	1600A of 277/480V 3 Phase
Parking	Approximately 100+ Striped Car Parks with Additional Paved Land for Additional Parks or Outside Storage

## BUILDING 2

Size	±6,309 SF Shell
Clear Height	16' Clear
Loading	6 Oversize Grade Level Doors
Sprinklered	Yes
Parking	Approximately 50 Car Parks





4404 Beltwood Pkwy Famers Branch, TX



4404 Beltwood Pkwy Famers Branch, TX

4404 Beltwood Pkwy Famers Branch, TX

4404 Beltwood Pkwy Famers Branch, TX

4404 Beltwood Pkwy Famers Branch, TX