



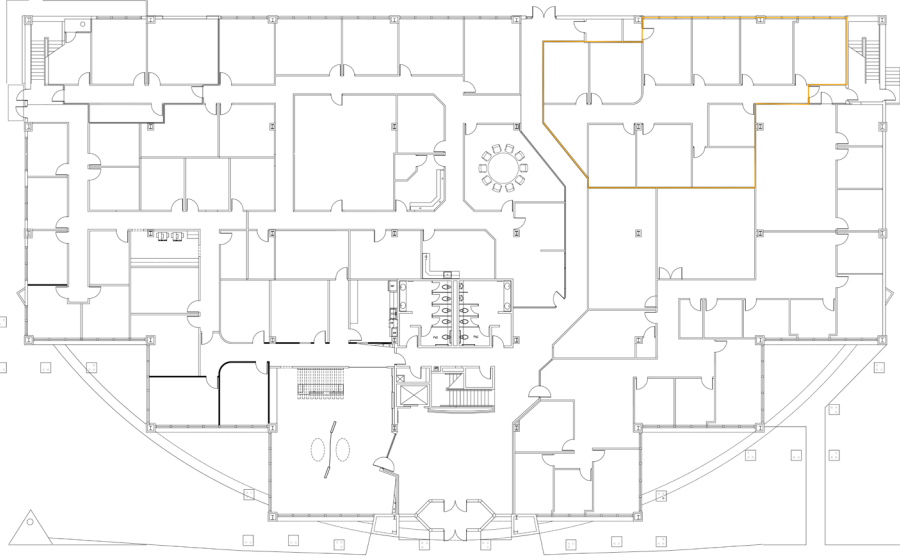
CROSS ROCK PLACE

AVAILABLE OFFICE SPACE

3,143 Sq. Ft.

SUBMARKET: Memorial Road Corridor
ADDRESS: 3600 NW 138th. STE 102
Oklahoma City, OK 73134

CROSS ROCK PLACE



3,143 SQ. FT.



DETAILS

- Building features high-end finishes and unique architectural details throughout
- Large windows flood the suite with natural light
- Covered parking available
- Surrounded by shops, restaurants, and other services
- 5.16 / 1,000 RSF parking ratio



CROSS ROCK PLACE



CROSS ROCK PLACE

Cross Rock Place is a Class "A" Office Building situated in Northwest Oklahoma City's fast growing Memorial Corridor.

This prime location, at the corner of Hefner Parkway & the John Kilpatrick Turnpike, is surrounded by large corporate centers, restaurants, retail, neighborhoods and medical centers/hospitals.

With high daily traffic, professional manicured landscaping and one-of-a-kind features, Cross Rock is the ideal location for your business.