



1790 30th Street

Boulder, CO

Central Boulder **Hidden Gem** Office Suites

Angela Topel

angela@gibbonswhite.com
(303) 586-5921

Michael-Ryan McCarty

mccarty@gibbonswhite.com
(303) 586-5939

Patrick Weeks

patrick@gibbonswhite.com
(303) 586-5935

www.gibbonswhite.com

[Property Info & Gallery](#)

[View Map](#)

Available Space	891 - 6,077 sq. ft.
Lease Rate / sq. ft.	\$12.50 - \$17.50 NNN
Expenses / sq. ft.	\$12.50*

**Including Utilities & Janitorial*

- **Year One Rate of \$12.50 NNN for Any Term of Three Years or Longer**
- Fresh Updates & New Modern Finishes with Remodeled Lobby & Common Areas & Highly Competitive Lease Rates
- Broad Range of Suite Sizes & Configurations from 891 to 6,077 sq. ft. Available, Making Sussex One an Ideal Choice for a Wide Range of Tenants
- Centrally Located across from the Twenty Ninth Street Mall, Surrounded by a Wide Range of Amenities, Restaurants, Coffee Shops, Grocery Stores, Yoga Studios & Fitness Gyms
- On-Site Professional Management & Ample Free Parking with 139 Spaces

© 2025 Gibbons-White, Inc.

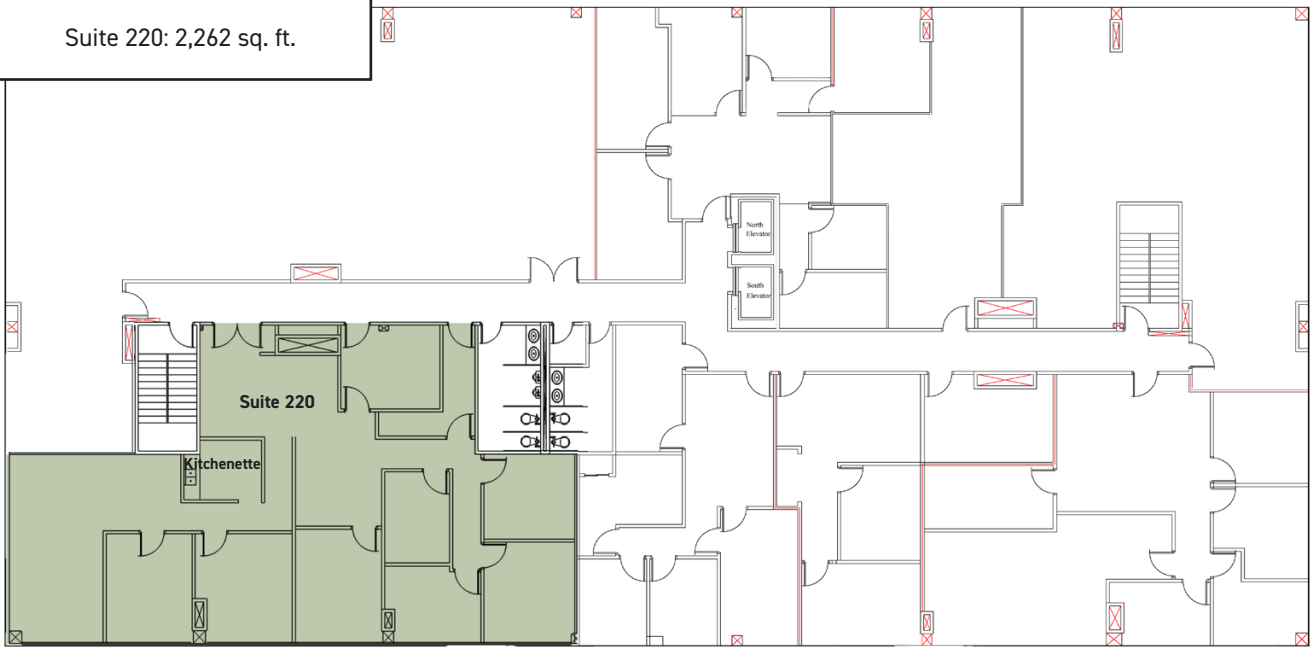


2305 Canyon Blvd, Suite 200, Boulder, CO 80302 • (303) 442-1040

The information included has been obtained from sources believed reliable. While we do not doubt the accuracy, it is unverified and no representation is being made.

Available 2nd Floor Suites

Suite 220: 2,262 sq. ft.



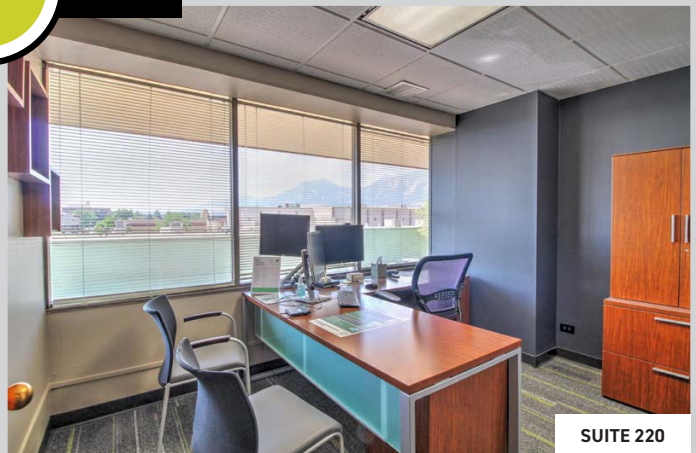
VIDEO



TOUR



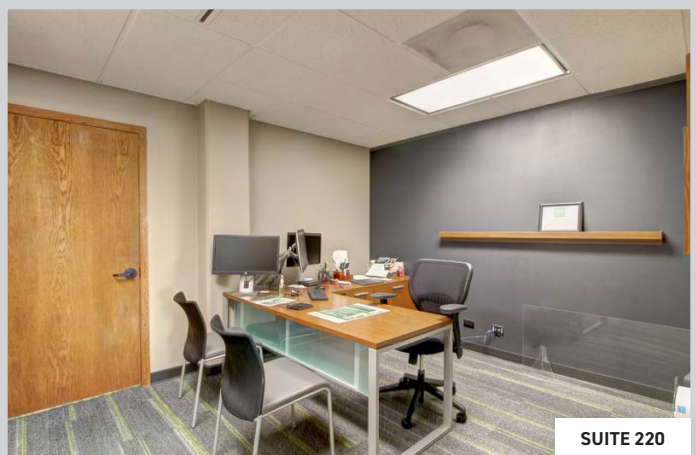
SUITE 220



SUITE 220

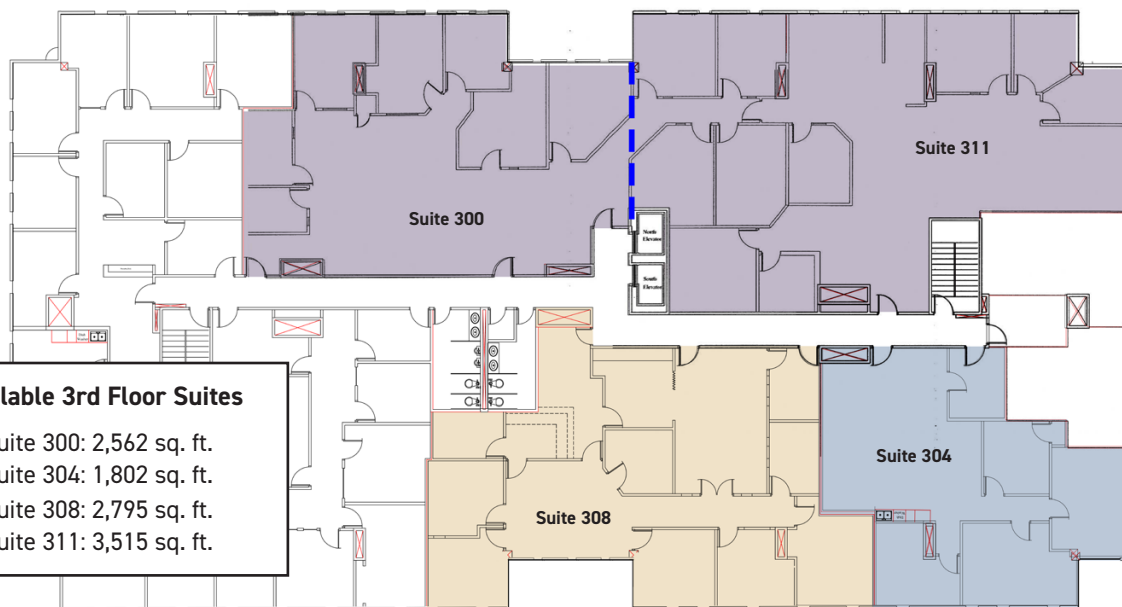


SUITE 220



SUITE 220

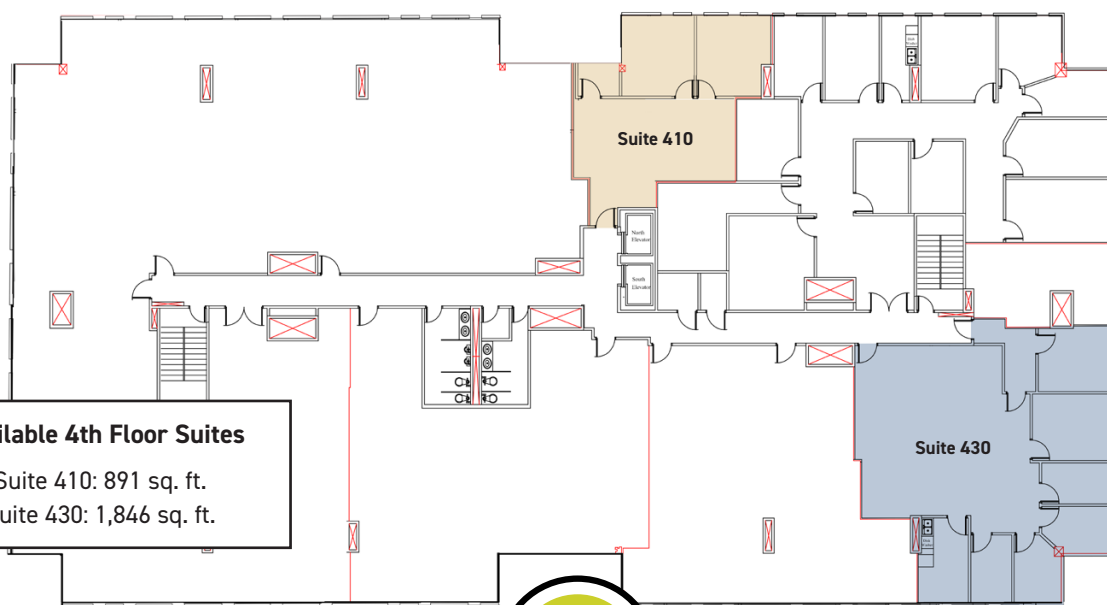
Third Floor



Available 3rd Floor Suites

Suite 300: 2,562 sq. ft.
Suite 304: 1,802 sq. ft.
Suite 308: 2,795 sq. ft.
Suite 311: 3,515 sq. ft.

Fourth Floor



Available 4th Floor Suites

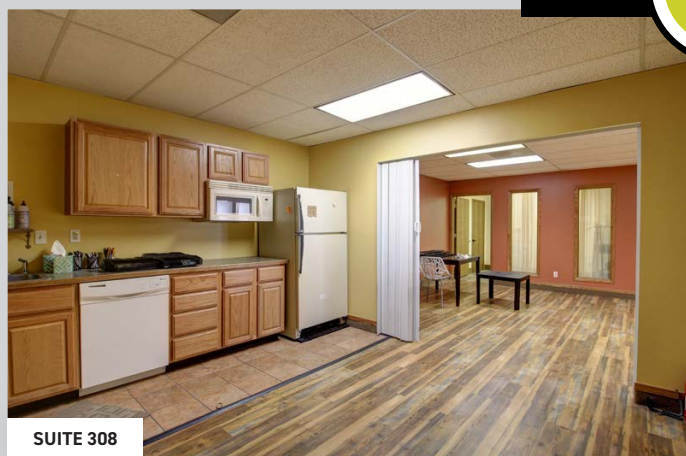
Suite 410: 891 sq. ft.
Suite 430: 1,846 sq. ft.



VIDEO



TOUR

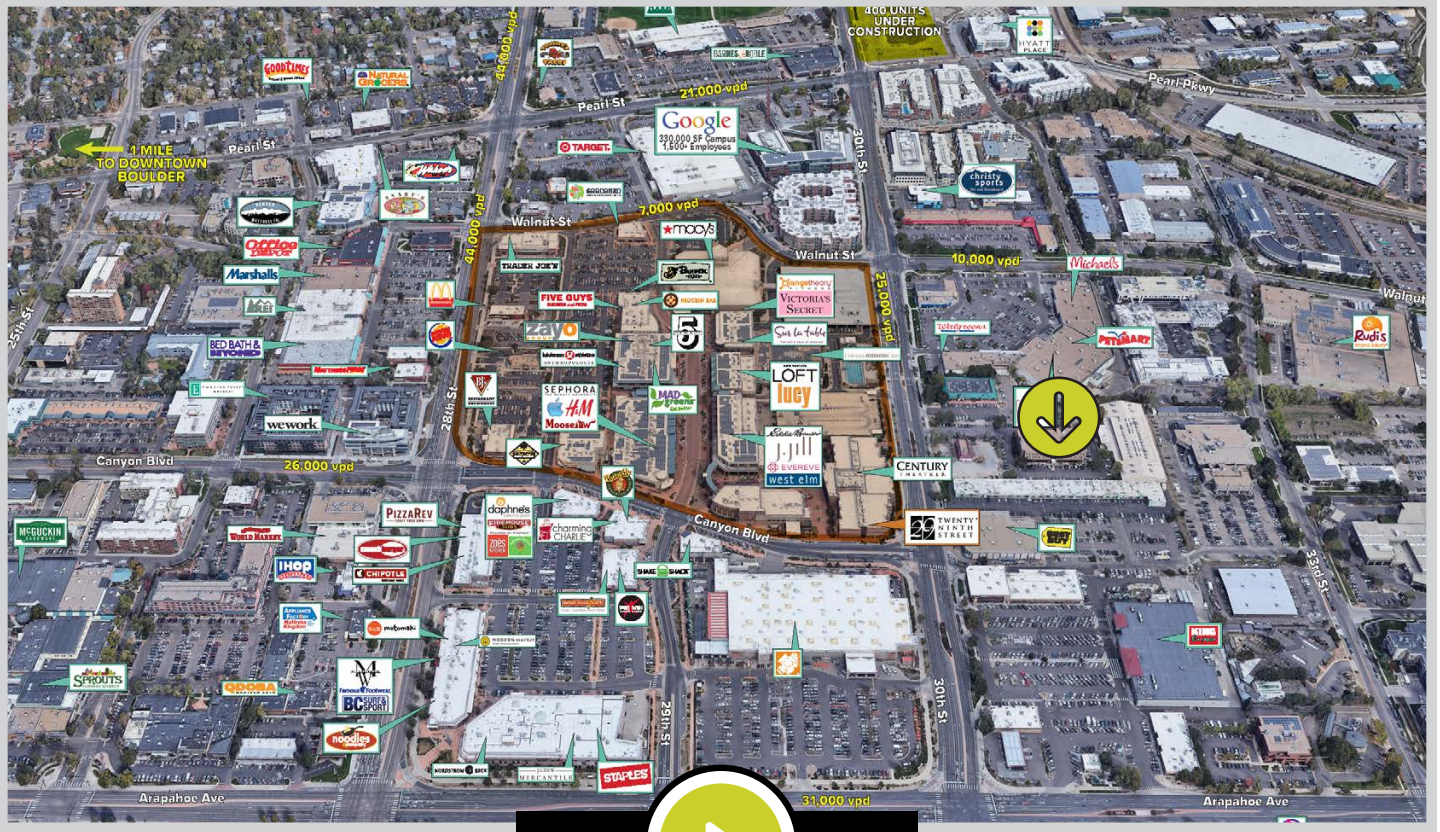


SUITE 308



SUITE 430

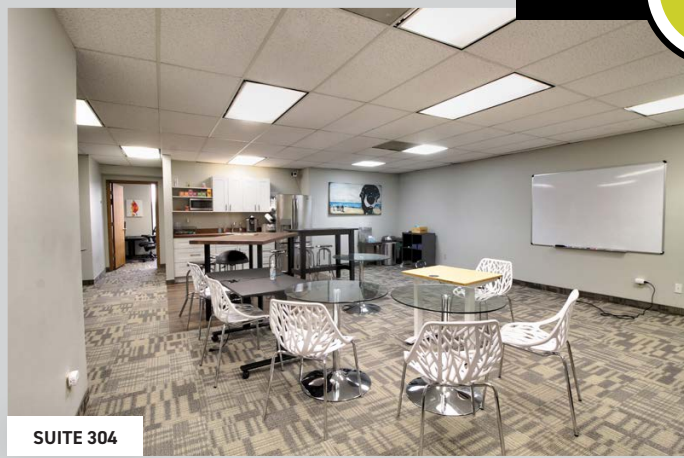
© 2025 Gibbons-White, Inc.



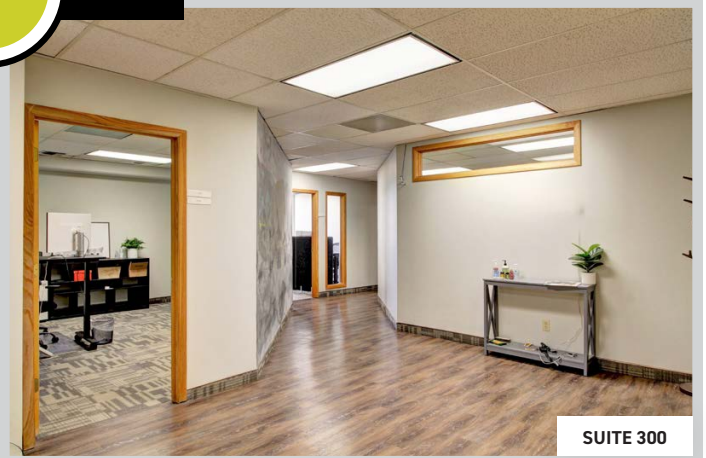
VIDEO



TOUR



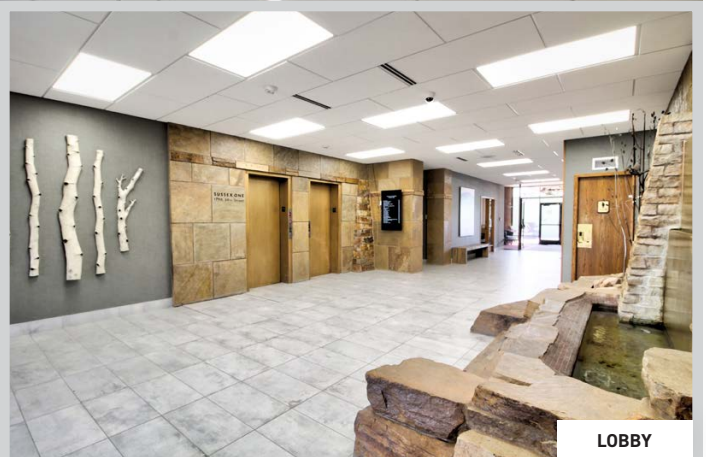
SUITE 304



SUITE 300



EXTERIOR



LOBBY

© 2025 Gibbons-White, Inc.