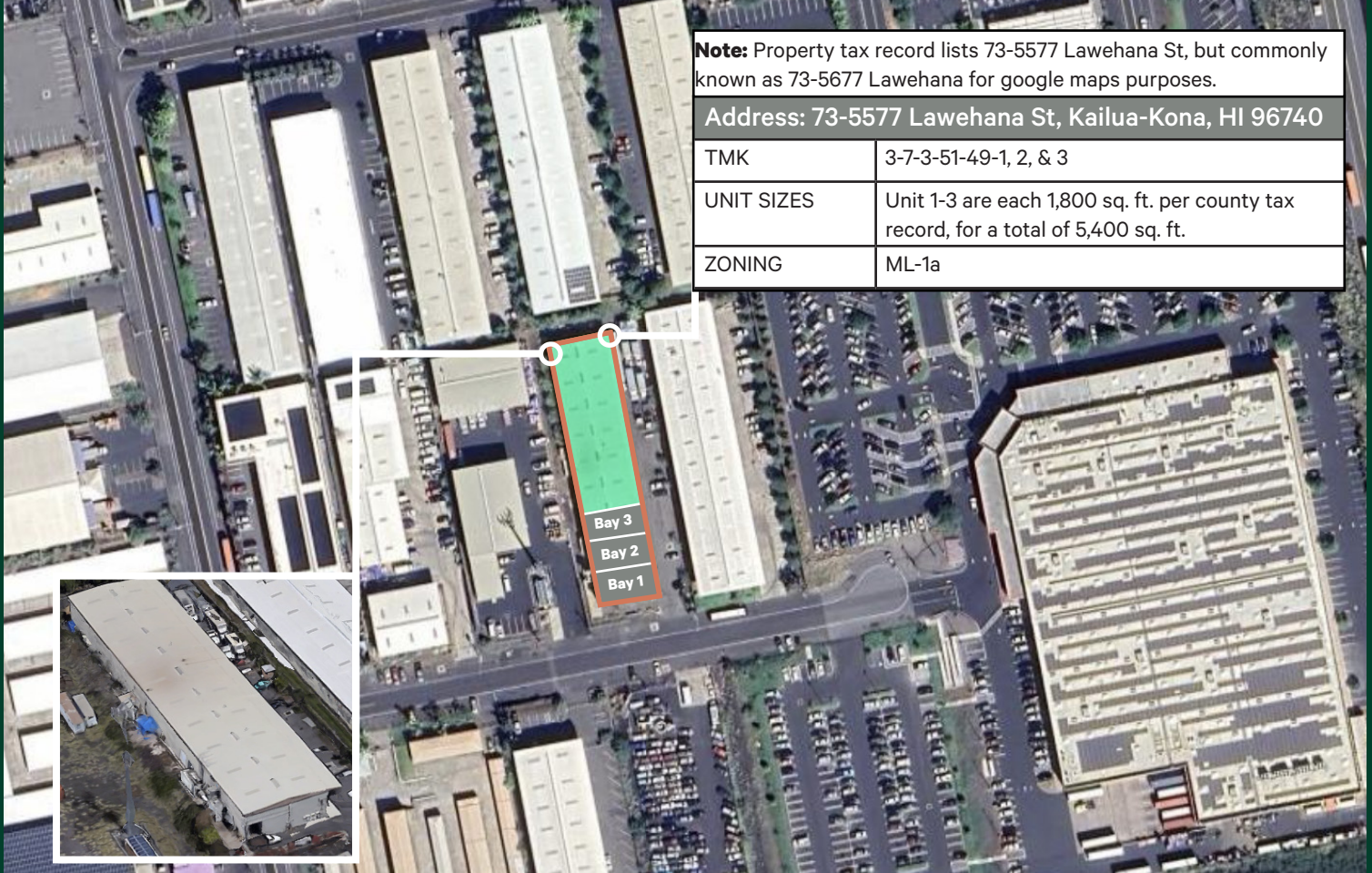


## 73-5577 Lawehana St

1,800 - 5,400 SF Warehouse Bays Available

73-5577 Lawehana St,  
Kailua-Kona, HI 96740  
[www.cbre.com/hawaii](http://www.cbre.com/hawaii)



**Note:** Property tax record lists 73-5577 Lawehana St, but commonly known as 73-5677 Lawehana for google maps purposes.

**Address:** 73-5577 Lawehana St, Kailua-Kona, HI 96740

**TMK** 3-7-3-51-49-1, 2, & 3

**UNIT SIZES** Unit 1-3 are each 1,800 sq. ft. per county tax record, for a total of 5,400 sq. ft.

**ZONING** ML-1a

## Property Overview

<b>Address</b>	73-5577 Lawehana St, Kailua-Kona, HI 96740	<b>Unit Size</b>	1,800 - 5,400 sq. ft. (Current footprint of all three contiguous units is 5,400 sq. ft.)
<b>Location</b>	Kaloko Industrial Park in Kailua-Kona	<b>Sprinklers</b>	Yes
<b>Units</b>	Unit 1 = 1,800 SF Unit 2 = 1,800 SF Unit 3 = 1,800 SF Total = 5,400 SF (Currently there are two ground floor offices and restroom within Unit 1, but all three units are currently contiguous for a total of 5,400 sq. ft. of ground floor space. Ideally leased together, and that is reflected within the asking rates, but individual units would need to be evaluated based on demising costs and requirements.)	<b>Zoning</b>	ML-1A
<b>Date Available</b>	Currently Vacant – Ready for Immediate Occupancy	<b>Parking</b>	Approximately nine (9) parking stalls (Each Unit comes with three parking stalls)
<b>Office</b>	Unit 1 has two small ground floor offices and restroom.	<b>Base Rent</b>	\$1.61/SF/Mo. (Rate Varies on whether a tenant leases a single unit or all units together.)
<b>Overhead Rollup Doors</b>	Six (6) total roll up doors of which there are three (3) drive in doors accessible from parking area; two (2) doors on the backside (makai side) of the premises; one (1) door facing Lawehana St and accessible on the front side of the building	<b>OPEX</b>	\$0.14/SF/Mo. (Est)

73-5577 Lawehana St  
Kailua-Kona, HI 96740

For Lease



73-5577 Lawehana St  
Kailua-Kona, HI 96740

For Lease



## Contact us

**Nicholas Adler**  
First Vice President  
+1 808 859 0588  
nicholas.adler@cbre.com  
RS-78419

© 2026 CBRE, Inc. All rights reserved. This information has been obtained from sources believed reliable, but has not been verified for accuracy or completeness. You should conduct a careful, independent investigation of the property and verify all information. Any reliance on this information is solely at your own risk. CBRE and the CBRE logo are service marks of CBRE, Inc. All other marks displayed on this document are the property of their respective owners, and the use of such logos does not imply any affiliation with or endorsement of CBRE. Photos herein are the property of their respective owners. Use of these images without the express written consent of the owner is prohibited.

NA:RMP\_ID49\_73-5577LawehanaSt\_02.03.26

[www.cbre.com/Hawaii](http://www.cbre.com/Hawaii)

**CBRE**