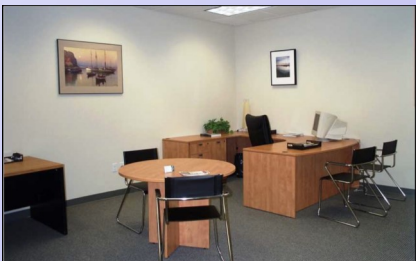
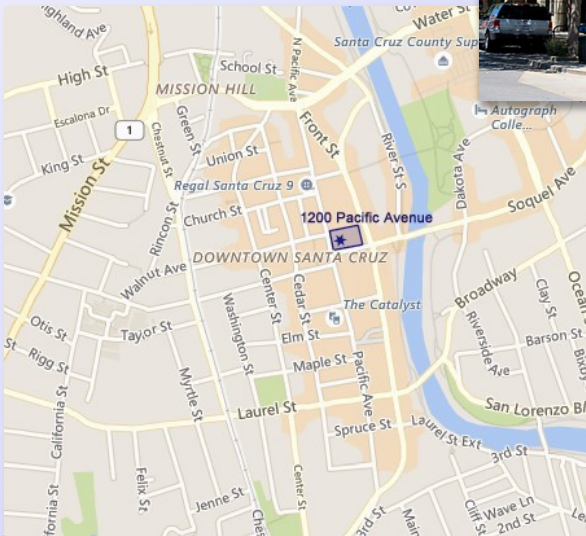


AVAILABLE FOR LEASE

1200 PACIFIC AVE, SANTA CRUZ

**OFFICE SPACE
FOR LEASE**
ONE SUITE
**DOWNTOWN
SANTA CRUZ**



1200 PACIFIC AVENUE, DOWNTOWN
SUITE 215 • +/- 415 SF • \$825/MO

- HIGH QUALITY OFFICE SPACE IN DOWNTOWN SANTA CRUZ
- INTERNET SERVICES AND UTILITIES PROVIDED
- EASY ACCESS TO ALL DOWNTOWN AMENITIES
- COMMON AREA, KITCHEN & BREAKROOM
- DIRECT CONNECTION TO PARKING STRUCTURE
- EASY ACCESS TO HIGHWAYS 1 and 17
- LOCATED IN THE HEART OF THE DOWNTOWN BUSINESS CORRIDOR

JIM WISEMAN
831-818-5454

DRE #01104278

jwiseman@sheldonwiseman.com

STEVEN SHELDON
831-818-0800

DRE #10208650

ssheldon@sheldonwiseman.com

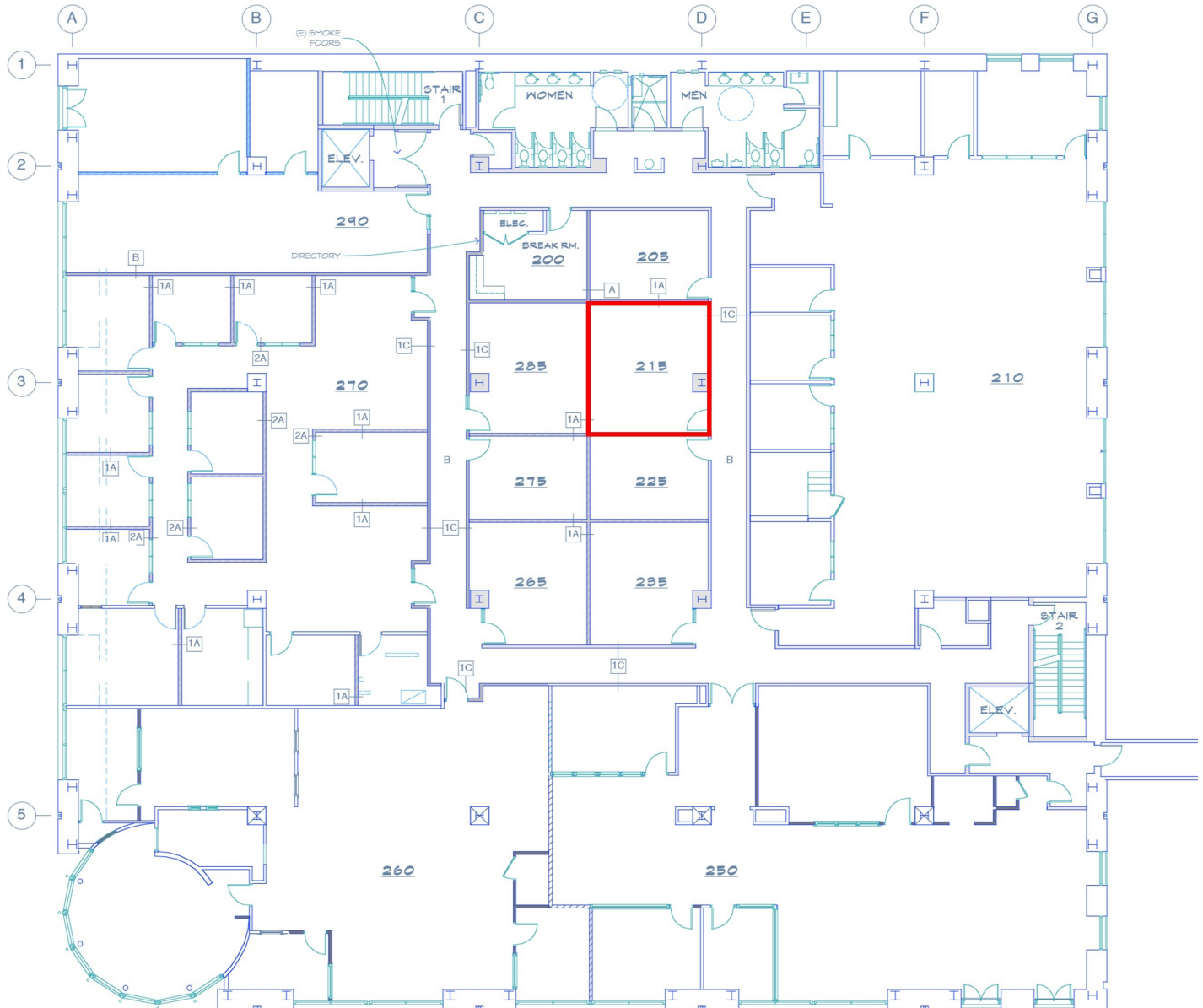


While the information contained herein is deemed reliable, we cannot guarantee its accuracy. All information should be verified.

1200 Pacific Avenue, Suite 390 ■ Santa Cruz, CA 95060
Tel: 831 • 454 • 9400 ■ Fax: 831 • 459 • 7988 ■ www.sheldonwiseman.com

INTEGRITY ■ SERVICE ■ RESULTS

Floor Plan — Second Floor, Suite 215



PROPOSED SECOND FLOOR PLAN
SCALE 1/8" = 1'-0"

LEGEND

- (E) WALLS TO REMAIN
- (N) 1 HR FIRE RATED WALLS
- (E) 1 HR WALLS TO REMAIN
- (E) WALLS REMOVED
- (N) PARTITION WALLS

DENNIS DIEGO
ARCHITECT
AIA
1127 KING STREET
SANTA CRUZ, CA.
95060
831 459 7566
FAX 459 7571