

Up to +/-5,000 SF Available
OFFICE BUILDING LOCATED ON EAST GREENWICH MEDICAL MILE
PROPERTY HIGHLIGHTS

- +/-11,000 SF CLASS A OFFICE BUILDING
- LOCATED IN THE HEART OF THE “**MEDICAL MILE**” IN EAST GREENWICH
- SPACE IS LOCATED ON STREET LEVEL AND OFFERS 30 PARKING SPACES
- EXTERIOR RECENTLY UPDATED
- GREAT VISIBILITY ON SOUTH COUNTY TRAIL
- OFFERS 8-10 PRIVATE OFFICES, CONFERENCE ROOM, BREAK ROOM, LARGE SPACE CAN BE CUSTOMIZED
- MONUMENT SIGNAGE AVAILABLE

TRAFFIC

- 15,139 VPD ROUTE 2
- 22,359 VPD DIVISION ROAD
- 39,499 VPD ROUTE 4

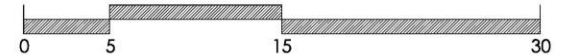
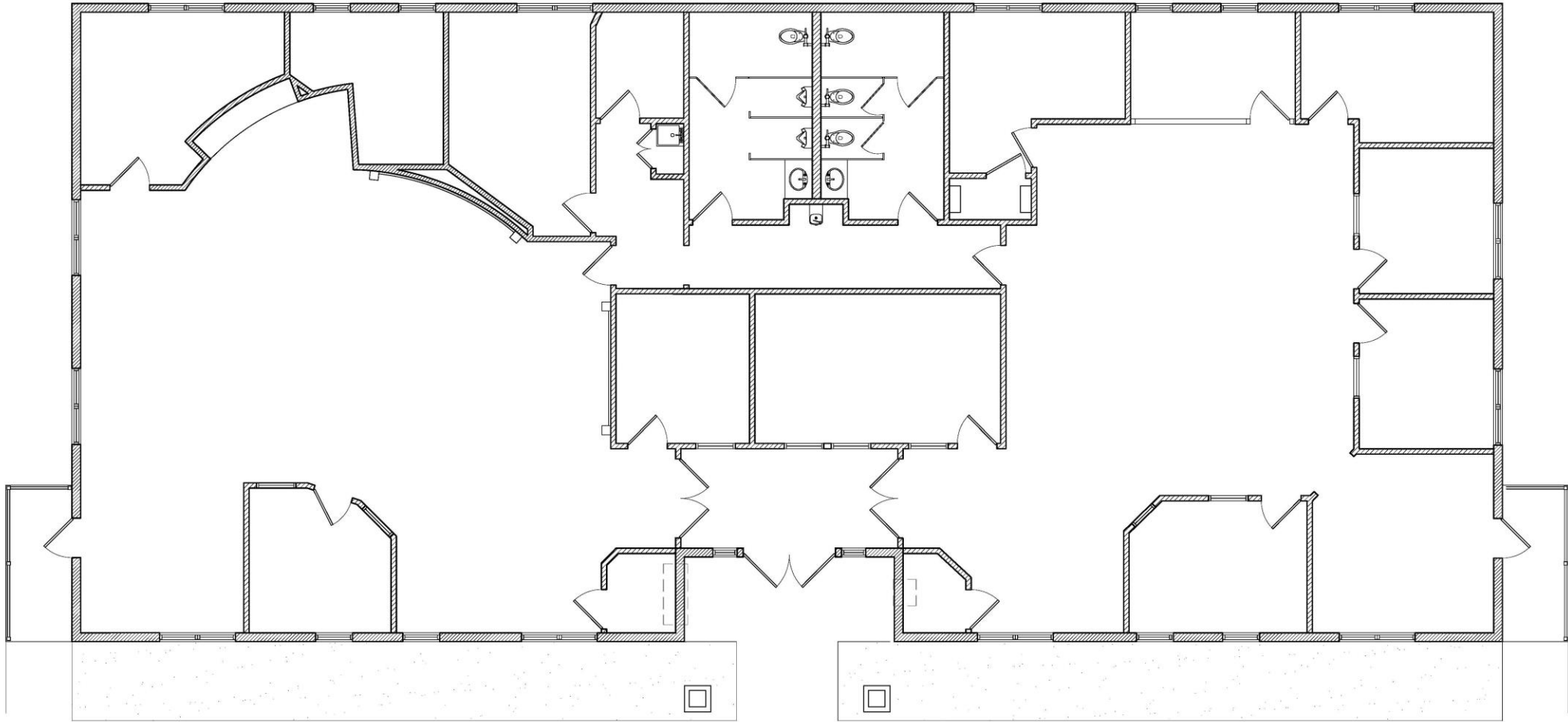
DEMOS	1 MI	2 MI	3 MI
Population	3,464	13,205	29,222
Med HH \$	\$103,335	\$95,973	\$97,307
Total Business	101	642	1,067
Total Employees	869	5,372	9,526



For more information, please contact:

Derek Brazeau
Broker
 401.273.2053
dbrazeau@hayessherry.com

146 Westminster Street, 2nd floor
 Providence, RI 02903
 phone: 401.273.1980
hayessherry.com



FOR LEASE

1370 South County Trail

East Greenwich, RI 02818





HAYES & SHERRY

FOR LEASE

1370 South County Trail

East Greenwich, RI 02818

