



2025 DEMOGRAPHICS
3 Mile | 5 Miles | 10 Miles



Population

10,825 | 17,426 | 61,776



Daytime Population

6,892 | 10,021 | 33,255



Median Household Income

\$64,339 | \$76,857 | \$110,536

FOR LEASE OR SALE

West Osage Street and Country Club Estates Drive | Pacific, Missouri 63069
0.69 - 1.62 Acres | Sale Price: \$10.00 - \$12.00/SF | Lease Rate: Call for Details

PROPERTY DETAILS

- Outlots prime for development
- Tenants include CVS, Tractor Supply, B&H Market, Dollar General, & Domino's Pizza
- Easy access to Interstate 44
- Zoned Commercial
- Utilities available

Connor Wiemann

314.785.7627
cwiemann@paceproperties.com

Ryan Geringer

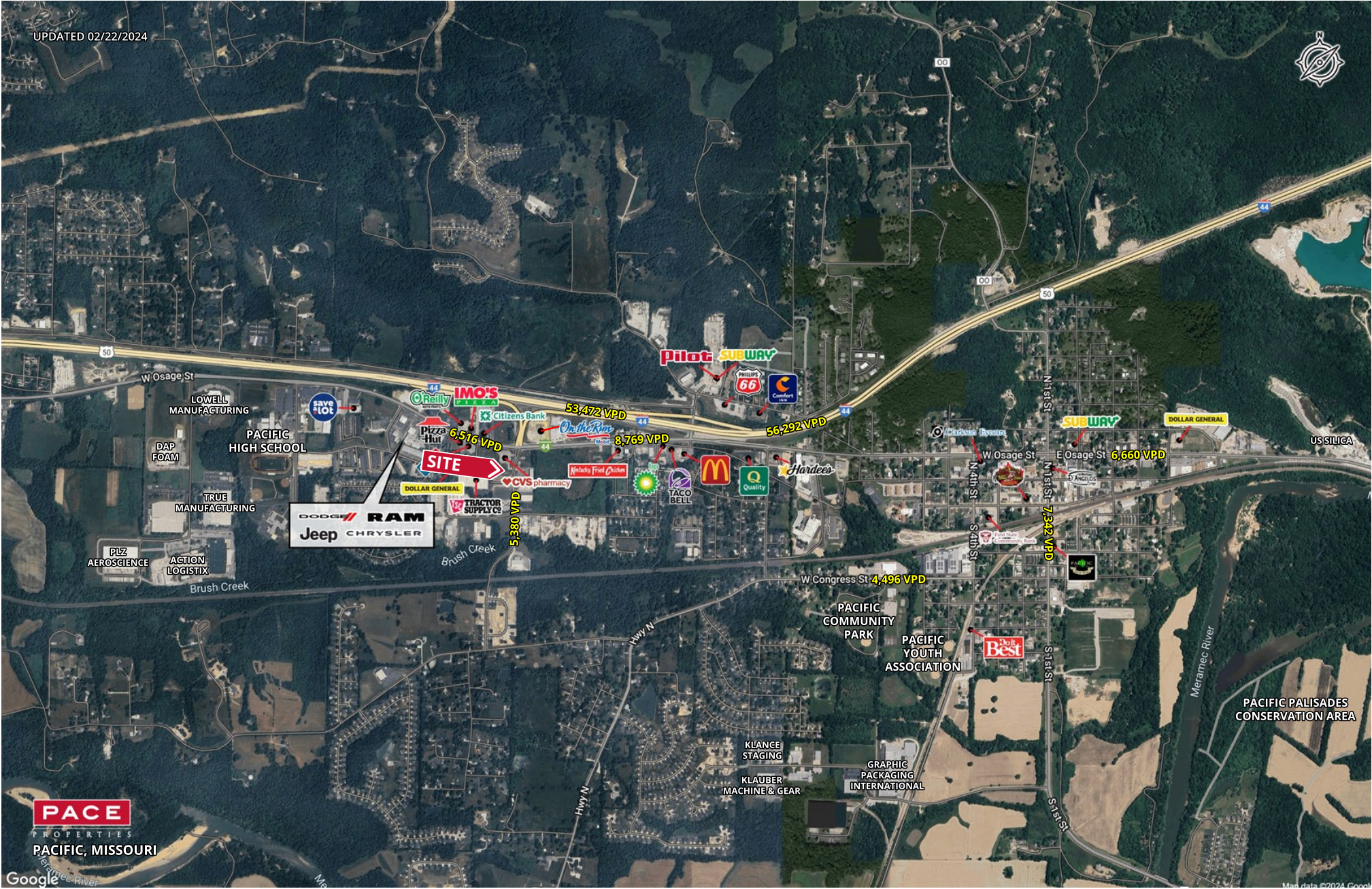
314.785.7642
rgeringer@paceproperties.com

PACEPROPERTIES.COM | 314.968.9898

1401 South Brentwood Boulevard, Suite 900 | St. Louis, Missouri 63144

The information contained herein is not warranted, although it has been obtained from the owner/landlord of the subject property or from other sources that Pace Properties, Inc. deems reliable, and is subject to change without notice. Owner/landlord and Pace Properties, Inc. make no representations as to the environmental condition of the subject property and recommend tenant's independent investigation.

Trade Area Aerial



PACEPROPERTIES.COM | 314.968.9898

1401 South Brentwood Boulevard, Suite 900 | St. Louis, Missouri 63144

The information contained herein is not warranted, although it has been obtained from the owner/landlord of the subject property or from other sources that Pace Properties, Inc. deems reliable, and is subject to change without notice. Owner/landlord and Pace Properties, Inc. make no representations as to the environmental condition of the subject property and recommend tenant's independent investigation.