



Walk to Downtown Westport - Offices for Lease

44 Post Road West
Westport, Connecticut
Fairfield County

Location

Rare opportunity to lease individual floors in a very convenient downtown Post Road location with great parking. Walk to downtown Westport amenities, restaurants, Delis and the Saugatuck River. Competitive rental rate !

Easy access to Exit 17 of I-95 and the Merritt Parkway.



2nd floor offices



About the Space

- 1,260 SF - 2nd Floor
- 790 SF - Lower Level
- Office Use
- Available immediately
- 44 Post Road West and 38 Post Road West share a parking lot for 25 cars
- Great opportunity of building signage on Post Road

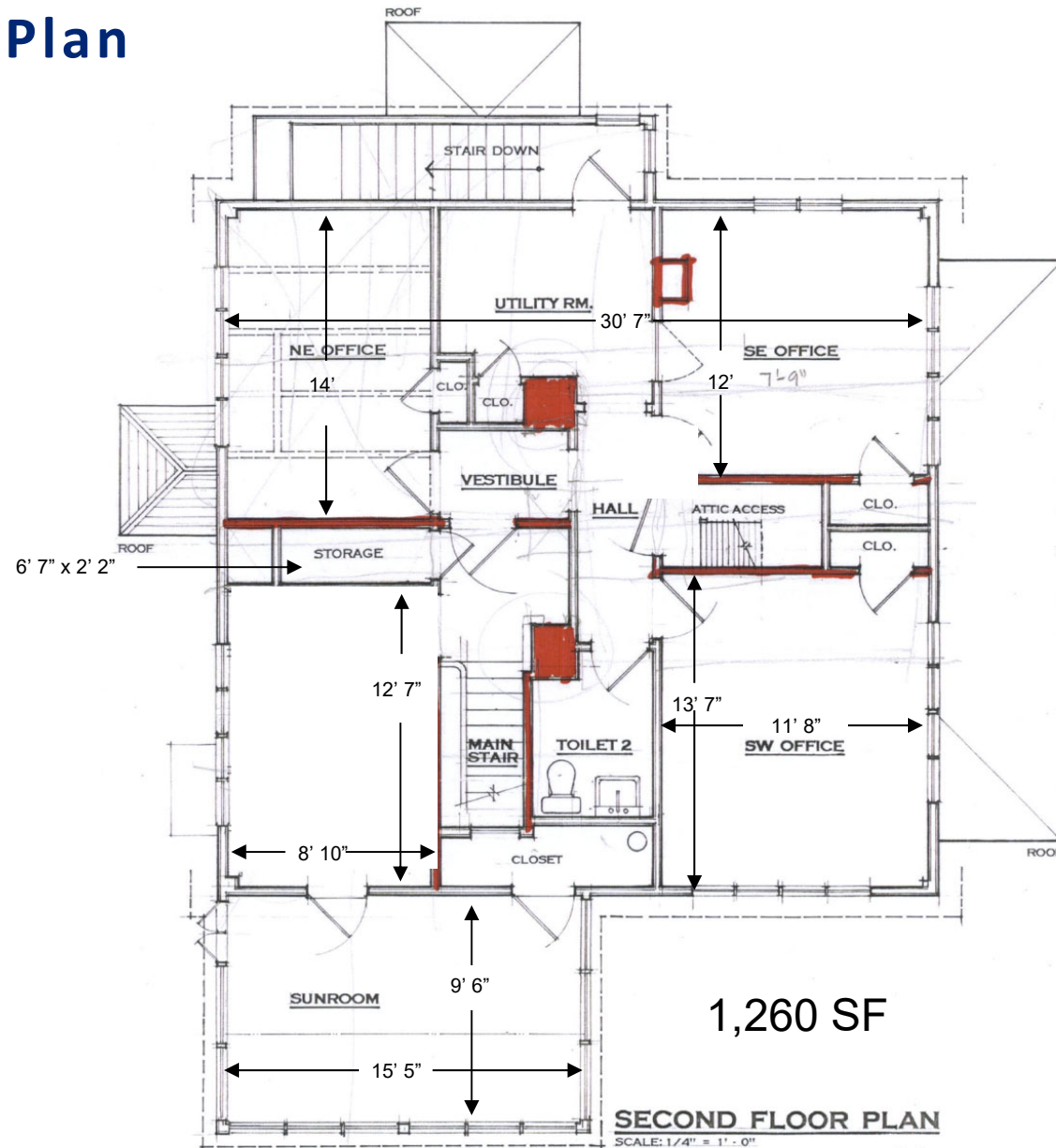
Pricing

- 2nd floor - \$25.00 SF + Utilities \$3.00 SF
- Lower Level - \$19.75 SF + Utilities \$3.00 SF

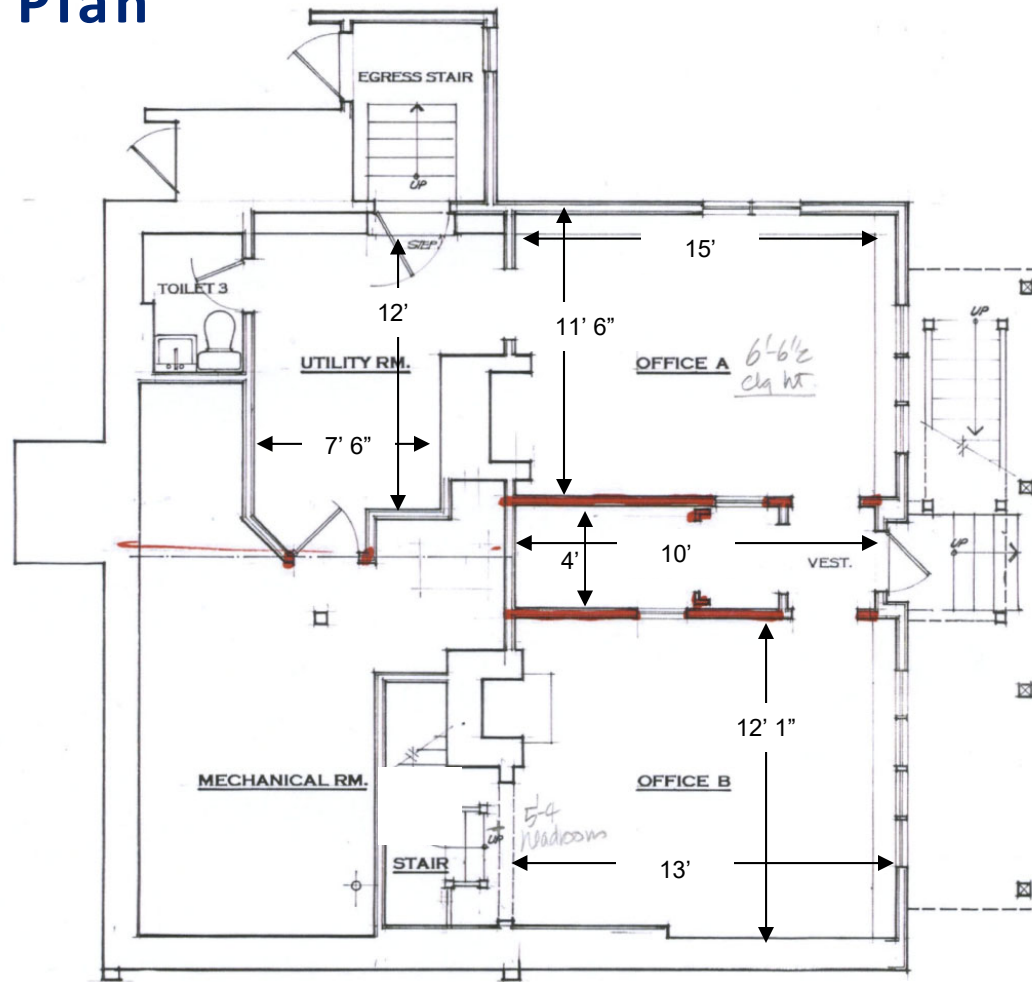
All information from sources deemed reliable and is submitted subject to errors, omissions, change of price, rental, prior sale and withdrawal without notice.



Second Floor Plan



Lower Level Floor Plan



790 SF

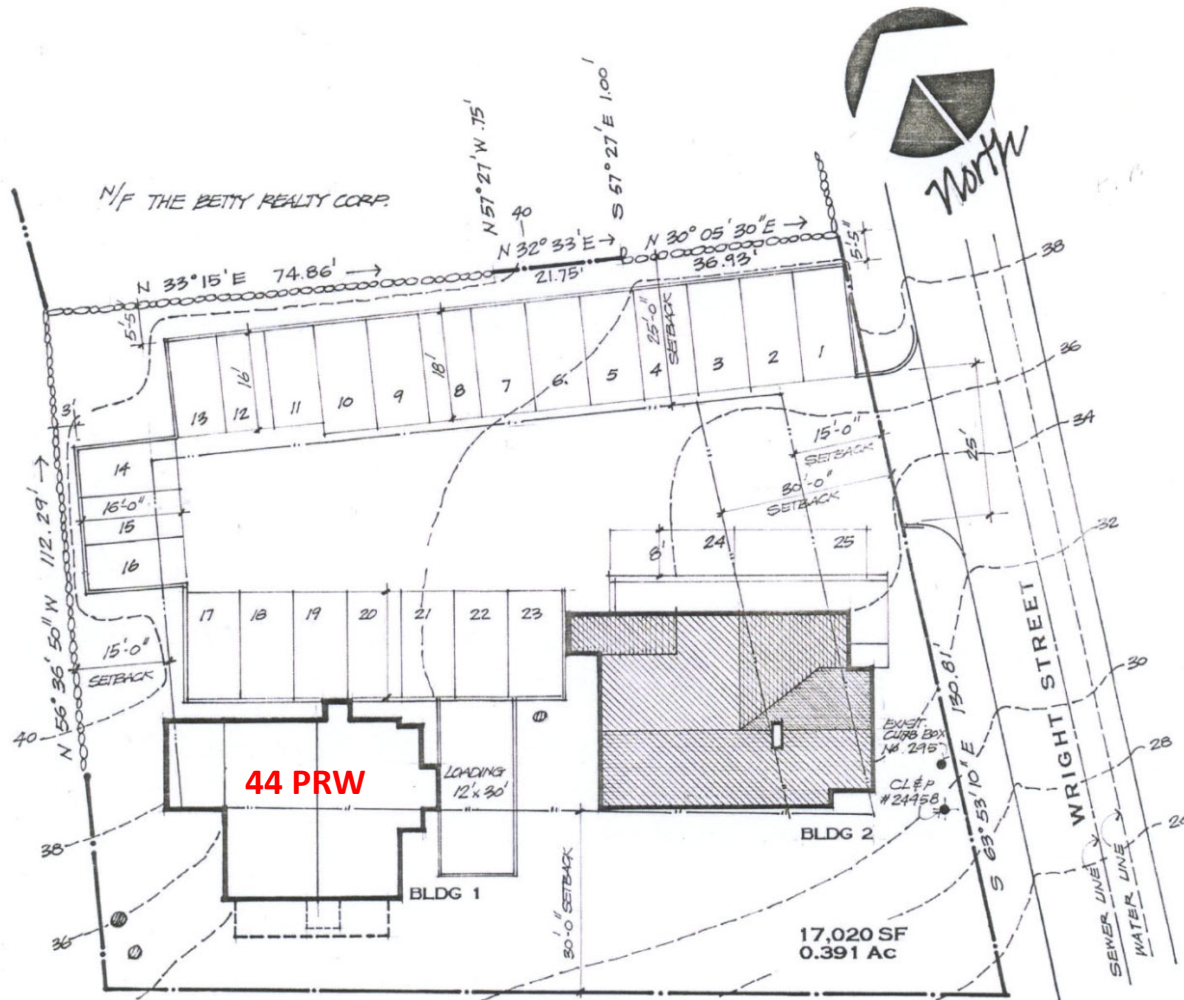
LOWER LEVEL FLOOR PLAN

SCALE: 1/4" X 1' = 0"

BASEMENT PLAN

SCALE: 1/4" = 1' - 0"

Site Plan



SITE PLAN

SCALE: 1" = 20'-0"

Aerial



Map



For additional information, please contact:

Franco Fellah
Executive Vice President

HK Group II, Inc.
Commercial Real Estate
49 Riverside Avenue
Westport, CT 06880

C: 203.981.3476

