

For Lease | 844 W Nye Lane, Carson City, NV 89701

Property Summary



Property Description

Professional/Medical office for lease Convenient Westside Carson city professional office space close to 1-580 freeway on/off ramp, shopping and Carson Tahoe Hospital.

Property Highlights

- Tenant pays their own Gas & Electric
- Garbage, Sewer and Water included in CAMs
- Three (3) offices
- Common Area Restrooms
- Reception area
- Elevator served
- Ample parking

Offering Summary

Lease Rate:	Negotiable
Lease Type:	NNN
NNN:	\$0.25/SF/MO
Available SF:	1,392 SF
Building Size:	10,728 SF

Demographics	0.5 Miles	1 Mile	1.5 Miles
Total Households	1,603	4,937	8,156
Total Population	3,593	11,261	18,354
Average HH Income	\$92,007	\$93,121	\$93,822

Samuel Douglass, CCIM Principal/Managing Broker | NV #B.143639.LLC | 775.443.7576 | Samuel@NVCG.US

Nevada Commercial Group LLC | www.nvcg.us | 301 West Washington Street, Carson City, NV 89703 | 775.884.1896



Lease Spaces

Lease Information

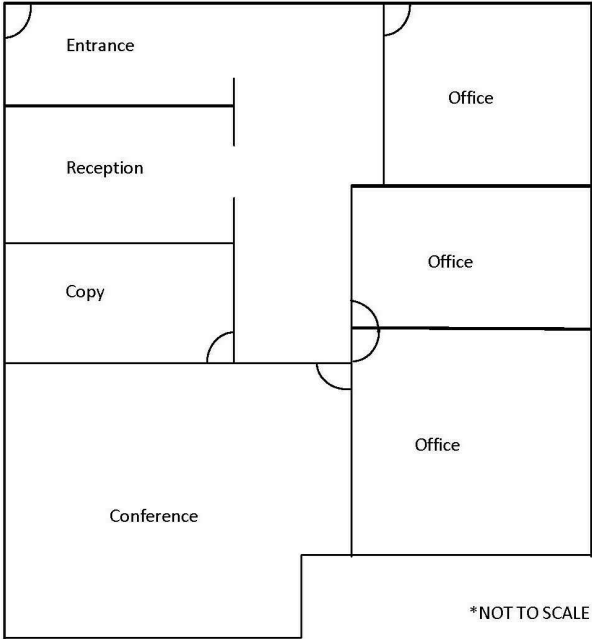
Lease Type:	NNN	Lease Term:	Negotiable
Total Space:	1,392 SF	Lease Rate:	Negotiable

Available Spaces

Suite	Size (SF)	Description
844 W Nye Lane	1,392 SF	NNN: \$0.25/SF/MO

Floorplan: 844 W. Nye Lane, Suite 101
Carson City, NV 89703
1,392 ± square feet

N
W E
S



For Lease | 844 W Nye Lane, Carson City, NV 89701

Location Map



Samuel Douglass, CCIM Principal/Managing Broker | NV #B.143639.LLC | 775.443.7576 | Samuel@NVCG.US

Nevada Commercial Group LLC | www.nvcg.us | 301 West Washington Street, Carson City, NV 89703 | 775.884.1896



For Lease | 844 W Nye Lane, Carson City, NV 89701

Demographics Map & Report



Population	0.5 Miles	1 Mile	1.5 Miles
Total Population	3,593	11,261	18,354
Average Age	45	44	44
Average Age (Male)	43	43	43
Average Age (Female)	46	45	45
Households & Income	0.5 Miles	1 Mile	1.5 Miles
Total Households	1,603	4,937	8,156
# of Persons per HH	2.2	2.3	2.3
Average HH Income	\$92,007	\$93,121	\$93,822
Average House Value	\$464,730	\$436,234	\$440,129

Demographics data derived from AlphaMap