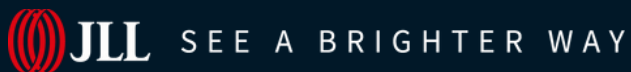
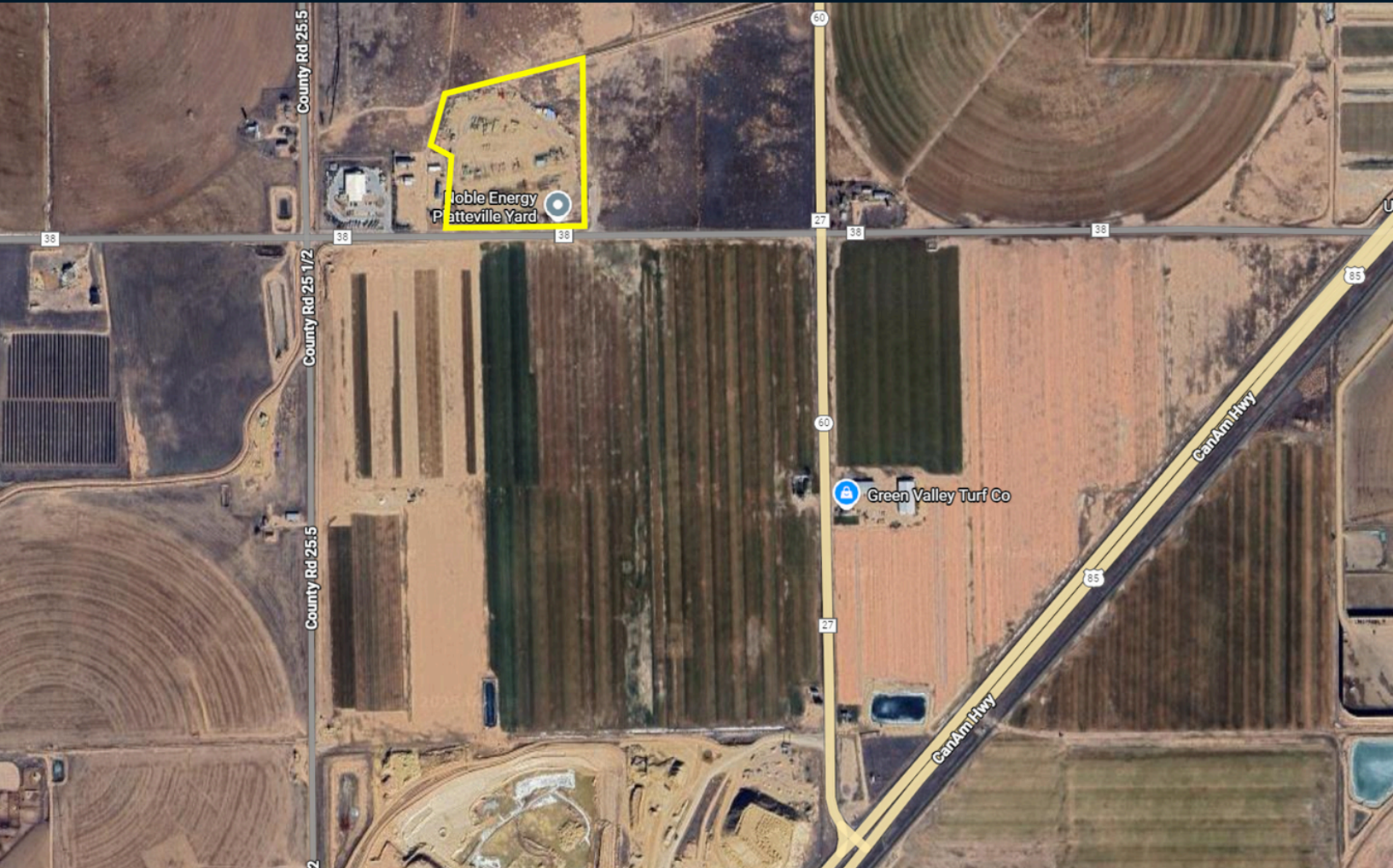


Land For Sale

14.2 Acres

Highway 60 & Weld County Road 38

Platteville, Colorado



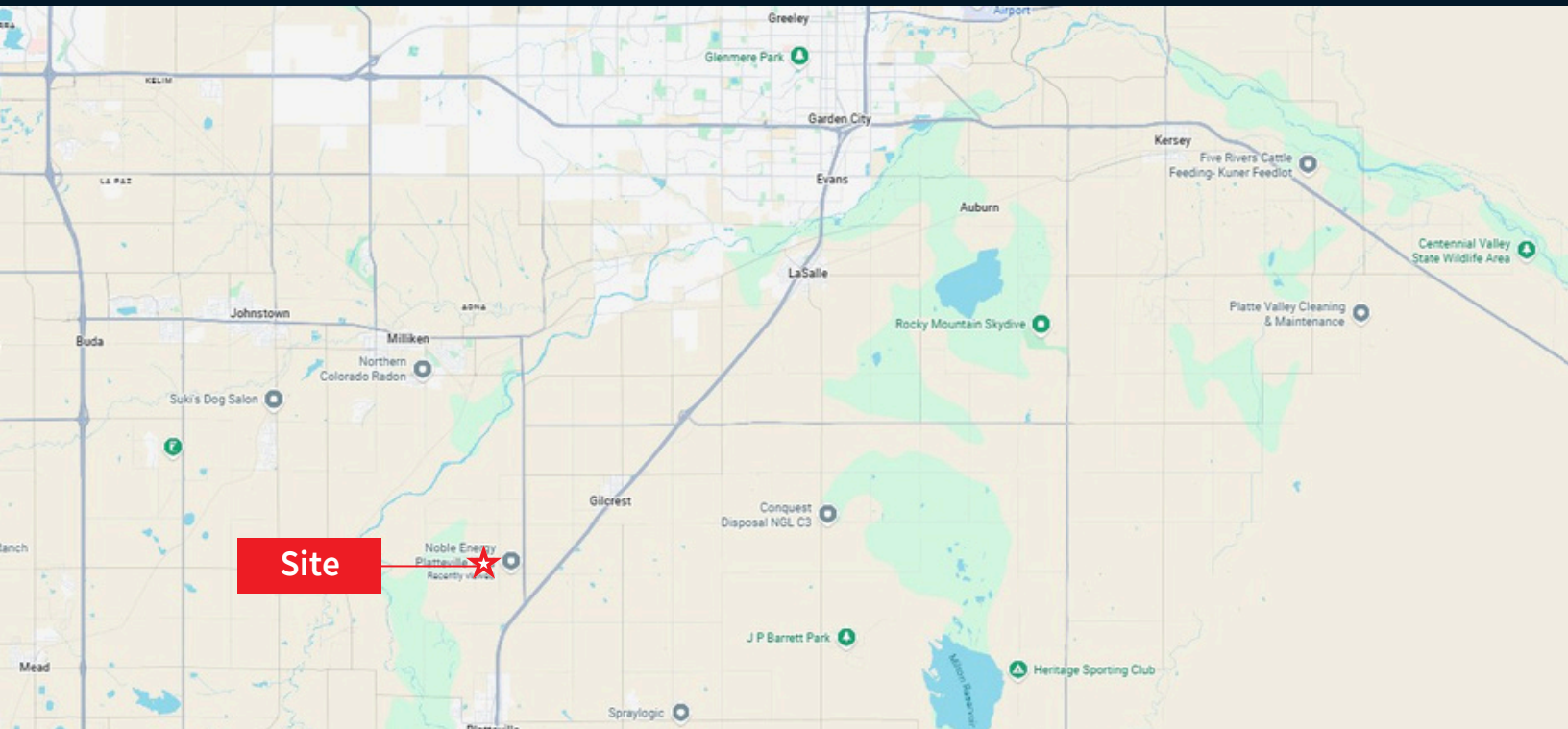
Site Overview

Site Size	14.2 Acres
City	Platteville
County	Weld County

Highway 60 & CR 38

Platteville, CO 80651

Zoning	Agricultural (USR)
Uses	Medium industrial with outside storage
Price	\$3,500,000



For more information, please contact:

Bruce Dodge
Executive Vice President
+1 303 901 5205
bruce.dodge@jll.com