

OFFERING MEMORANDUM

713 W COMMONWEALTH AVE



FULLERTON, CA 92832

km Kidder
Mathews



*Exclusively
Listed by*

RYAN SHARPE
Senior Vice President, Shareholder
310.893.3397
ryan.sharpe@kidder.com
LIC N° 01940376

TEAMSHARPE.COM
KIDDER.COM



The information contained in the following Marketing Brochure is proprietary and strictly confidential. It is intended to be reviewed only by the party receiving it from Kidder Mathews and should not be made available to any other person or entity without the written consent of Kidder Mathews.

This Marketing Brochure has been prepared to provide summary, unverified information to prospective purchasers, and to establish only a preliminary level of interest in the subject property. The information contained herein is not a substitute for a thorough due diligence investigation. Kidder Mathews has not made any investigation, and makes no warranty or representation, with respect to the income or expenses for the subject property, the future projected financial performance of the property, the size and square footage of the property and improvements, the presence or absence of contaminating substances, PCB's or asbestos, the compliance with State and Federal regulations, the physical condition of the improvements thereon, or the financial condition or business prospects of any tenant, or any tenant's plans or intentions to continue its occupancy of the subject property. The information contained in this Marketing Brochure has been obtained from sources we believe to be reliable; however, Kidder Mathews has not verified, and will not verify, any of the information contained herein, nor has Kidder Mathews conducted any investigation regarding these matters and makes no warranty or representation whatsoever regarding the accuracy or completeness of the information provided. All potential buyers must take appropriate measures to verify all of the information set forth herein.

This information has been secured from sources we believe to be reliable. We make no representations or warranties, expressed or implied, as to the accuracy of the information. References to square footage or age are approximate. Recipient of this report must verify the information and bears all risk for any inaccuracies.

FREESTANDING OFFICE BUILDING OFFERING

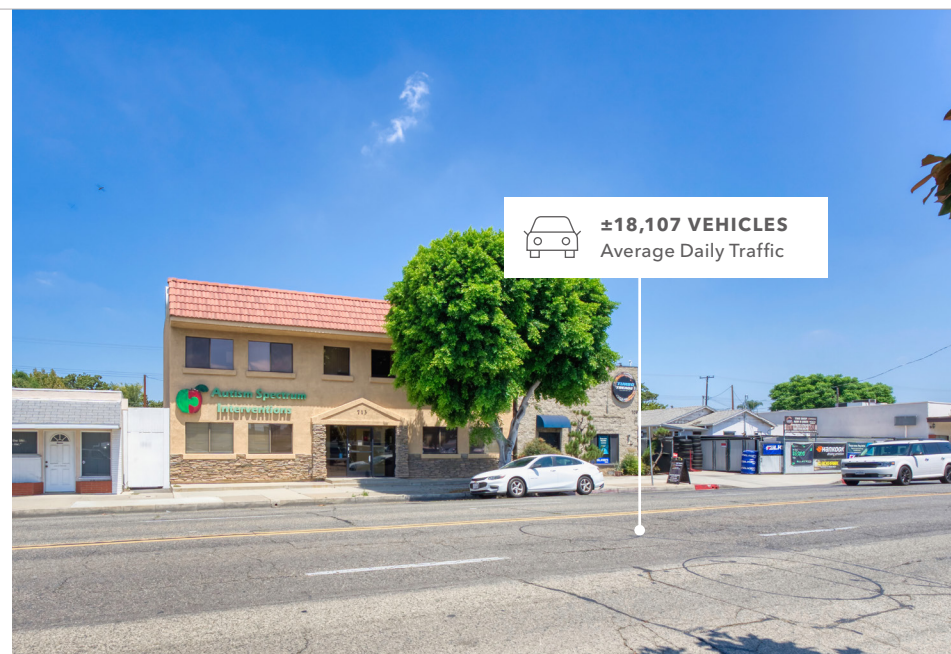
*Kidder Mathews is pleased to present the sale of
713 W Commonwealth Ave, Fullerton, CA 92832*

713 W Commonwealth Ave, Fullerton, CA 92832 is a well-located freestanding office/retail building consisting of a $\pm 3,500$ SF two-story structure on a large $\pm 7,000$ SF lot with private on-site parking. The property is currently occupied on a short-term leaseback, making it suitable for an owner-user seeking near-term occupancy or an investor with the time to re-tenant the building.

The building features multiple suites that are individually metered, providing flexible occupancy or leasing options. Positioned with ± 50 feet of frontage along Commonwealth Ave, the property benefits from excellent visibility to approximately $\pm 18,000$ vehicles per day.

Fullerton is a highly sought-after submarket, supported by strong demographics of over $\pm 200,000$ residents and an average household income of $\pm \$111,364$ within a three-mile radius. The property is within walking distance of Downtown Fullerton, Fullerton College, and St. Jude Medical Center, and is surrounded by major retailers including El Pollo Loco, U-Haul, and Fullerton Ford. Immediate access to the 57, 91, and 5 Freeways enhances connectivity to the greater Orange County region.

This rare low-price point commercial opportunity combines excellent visibility, private parking (± 10 spaces), and future occupancy or re-tenanting flexibility in a dense, supply-constrained market.



PROPERTY OVERVIEW

Address	713 W Commonwealth Ave Fullerton, CA 92832
APN	031-233-35
List Price	\$1,495,000
Building Size	$\pm 3,500$ SF
Lot Size	7,000 SF (0.16 Acres)
Tenancy	± 3 Month Leaseback
Rent	\$6,000/Month MG
Year Built	1925 / 1986
Parking	10 Spaces
Zoning	C1 Commercial

INVESTMENT HIGHLIGHTS

SUPERIOR VISIBILITY

±18,000 cars/day with 50 FT frontage along Commonwealth Ave.

STRONG DEMOGRAPHICS

±200,049 residents and ±\$111,364 avg. HH income within 3 miles.

OWNER-USER FLEXIBILITY

Two-story, ±3,500 SF freestanding office building with 4 office suites (individually metered), currently occupied by one tenant planning to lease back the property short term.

PRIVATE PARKING LOT

Rare for the area, with ±10 on-site spaces dedicated to the property on a large 7,000 SF lot.

WALKABLE, PRIME LOCATION

Walk Score® 83. Steps from Fullerton Ford, Patty's Cakes, U-Haul, and El Pollo Loco; minutes to Downtown Fullerton, Fullerton College, and St. Jude Medical Center, with easy access to the 57, 91 & 5 Freeways.

±18,000

CARS PER DAY

±3,500

SF OFFICE BUILDING

±\$111K

AVG. HH INCOME







EXECUTIVE SUMMARY



EXECUTIVE SUMMARY



FLOOR PLANS

Explore the Property Virtually

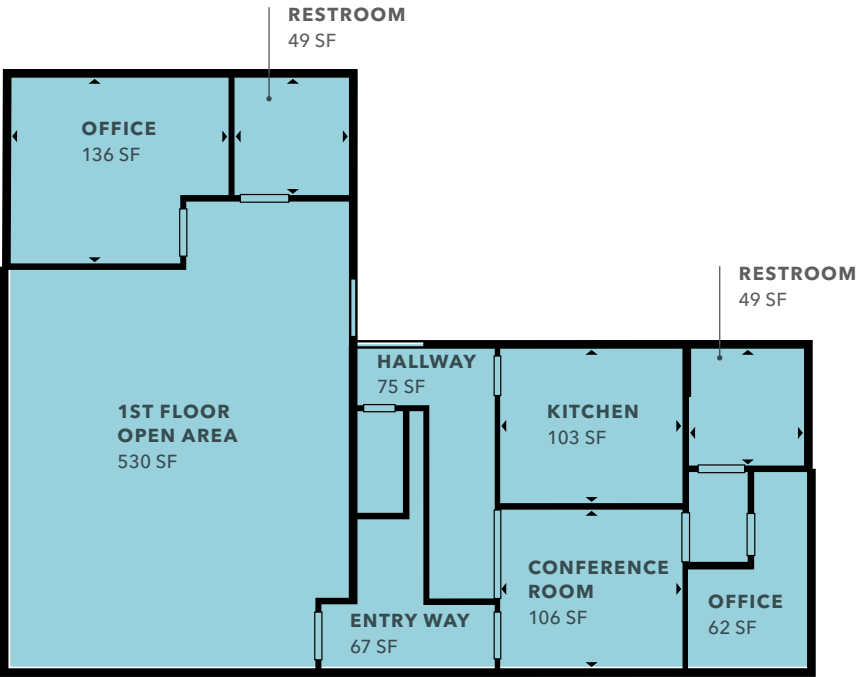
→ 713 W COMMONWEALTH

TWO
FLOORS

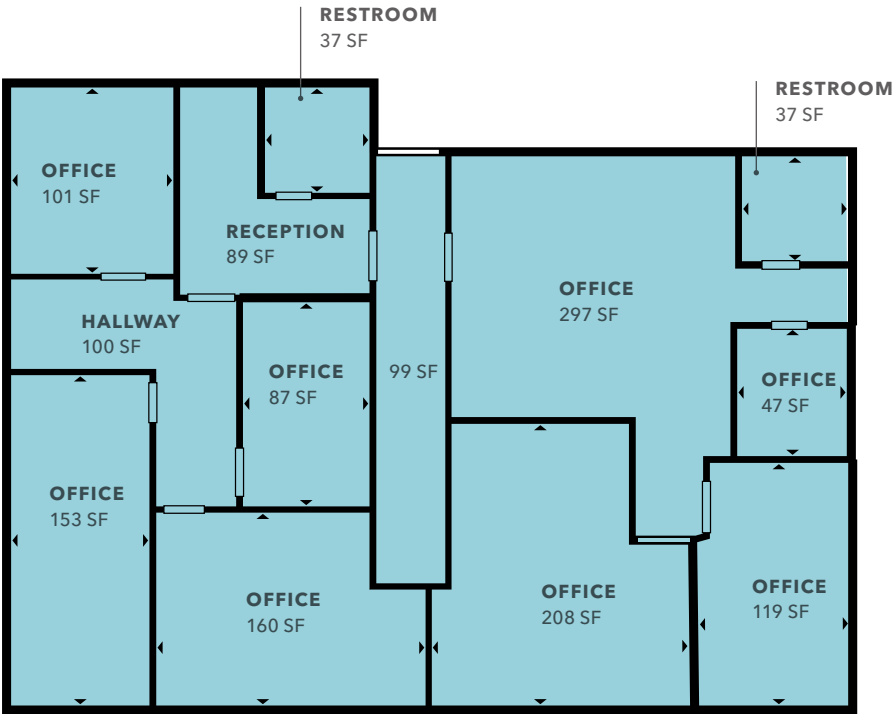
FOUR
OFFICE SUITES

±3,500
SF GROSS LEASABLE AREA

FLOOR 1



FLOOR 2



MARKET OVERVIEW

612,538

POPULATION WITHIN
A 5 MILE RADIUS

192,756

HOUSEHOLDS WITHIN A
5 MILE RADIUS

\$124,258

AVERAGE HOUSEHOLD INCOME
WITHIN A 5 MILE RADIUS

FULLERTON *MARKET OVERVIEW*

Fullerton is a city in northern Orange County, California, and was founded in 1887.

Historically, Fullerton was a center of agriculture, notably groves of Valencia oranges and other citrus crops; petroleum extraction; transportation; and manufacturing. It is home to numerous higher educational institutions, particularly California State University, Fullerton and Fullerton College. From the mid-1940s through the late 1990s, Fullerton was home to a large industrial base made up of aerospace contractors, canneries, paper products manufacturers, and is considered to be the birthplace of the electric guitar. The headquarters of Vons, which is owned by Albertsons, is located in Fullerton near the Fullerton-Anaheim line.

Fullerton is home to a vibrant music scene and is home to the Fullerton Public Library. The Main Library is located on Commonwealth Avenue in Downtown Fullerton and adjacent to the City Hall. There are several storefront theaters, including the Maverick Theater and Stages Theater.

Source: https://en.wikipedia.org/wiki/Fullerton,_California

DEMOGRAPHICS

POPULATION

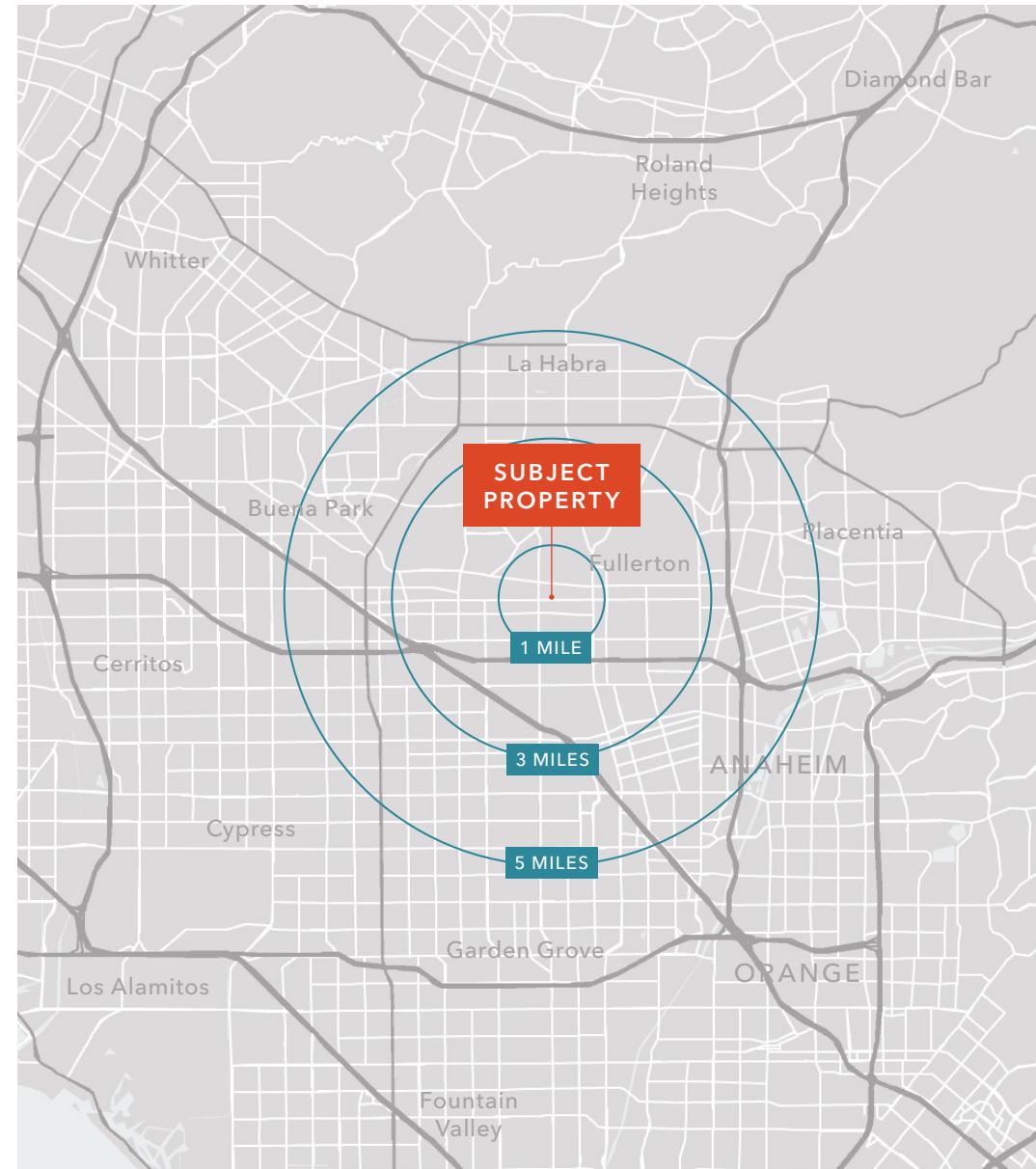
	1 Mile	3 Miles	5 Miles
2025 ESTIMATED POPULATION	27,502	206,465	612,538
2030 PROJECTED POPULATION	26,508	199,922	595,264
2020 CENSUS	29,320	211,200	622,274

2025 POPULATION BY RACE

	1 Mile	3 Miles	5 Miles
WHITE	41.7	35.4%	35.6
BLACK	2.6%	2.9%	3.1%
NATIVE AMERICAN	1.4%	1.3%	1.3%
ASIAN	18.9%	23.5%	23.1%
HAWAIIAN & PACIFIC ISLAND	0.2%	0.2%	0.3%
HISPANIC ORIGIN	53.5%	55.0%	55.0%

HOUSEHOLD

	1 Mile	3 Miles	5 Miles
2025 ESTIMATED HOUSEHOLDS	9,464	65,042	192,756
2030 PROJECTION	9,291	64,303	191,234
2020 CENSUS	9,662	64,472	191,688
GROWTH 2025-2030	-0.4%	-0.2%	-0.2%
2025 AVG HOUSEHOLD INCOME	\$141,938	\$130,678	\$124,258
2025 MEDIAN HOUSEHOLD INCOME	\$110,306	\$108,285	\$103,942



THE EDGE IN YOUR MARKET

For over 55 years, our clients have gotten the best of both worlds — independent counsel from trusted experts, working as part of the largest fully independent commercial real estate firm in the Western US. Today Kidder Mathews has over 900 real estate professionals and staff in 19 offices in Washington, Oregon, California, Idaho, Nevada, and Arizona.

COMMERCIAL BROKERAGE

\$9B

AVERAGE ANNUAL TRANSACTION VOLUME

510+

NUMBER OF BROKERS

36.7M+

ANNUAL SF OF LEASES

26.2M+

ANNUAL SF OF SALES

OUR SERVICES

Commercial Brokerage

Asset Services

ASSET SERVICES

58M+ SF

MANAGEMENT PORTFOLIO SIZE

850+

ASSETS UNDER MANAGEMENT

VALUATION ADVISORY

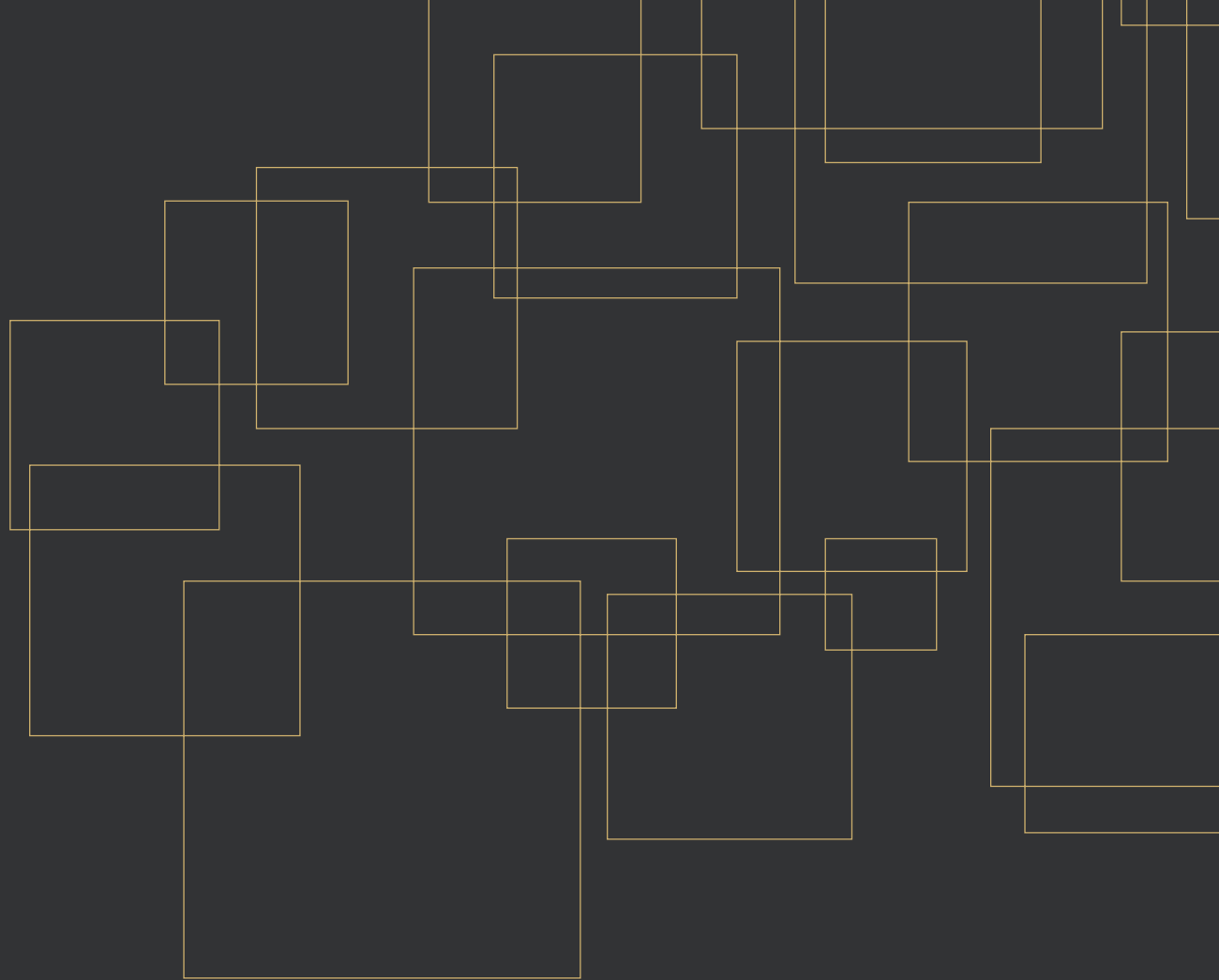
2,400+

AVERAGE ASSIGNMENTS

39/24

TOTAL NO. OF APPRAISERS/MAI'S





Exclusively listed by

RYAN SHARPE

Senior Vice President, Shareholder

310.893.3397

ryan.sharpe@kidder.com

LIC N° 01940376

TEAMSHARPE.COM

KIDDER.COM

