



MLS # 73439285 - Active
Commercial/Industrial - Commercial

10 Meadow Rd
Spencer, MA 01562-2012
Worcester County

List Price: **\$999,900**

Directions: **OFF WEST MAIN STREET, OFF ROUTE 9**

Renovated commercial building located on a main street, with plenty of parking! Over 10 office spaces, a conference room, a staff room, 4 bathrooms, a large commercial garage space & a large finished commercial room. A heated handicap walkway. All bathrooms are handicap accessible. Conveniently located seconds to rt 9.

Building & Property Information

	# Units	Square Ft:	Assessed Value(s)	Space Available For:
Residential:	0	0	Land: \$115,600	For Sale
Office:	1	0	Bldg: \$387,500	Lease Type:
Retail:	1	0	Total: \$503,100	Lease Price Includes:
Warehouse:	1	0	# Buildings: 1	Lease: No Exchange: No
Manufacturing:	1	0	# Stories: 1	Sublet: No
			# Units:	21E on File: No
Total:		5,546		
Disclosures: BONUS: Access agreement with solar company with \$190,000 transferrable payment plan will be transferred to new owner for substantial additional cash flow over next three years.				

Drive in Doors:	Expandable:	Gross Annual Inc:
Loading Docks:	Dividable:	Gross Annual Exp:
Ceiling Height:	Elevator:	Net Operating Inc:
# Restrooms: 4	Sprinklers:	Special Financing:
Hndcp Accessibl:	Railroad siding:	Assc: Assoc Fee:

Lot Size: 111,514 Sq. Ft.	Frontage:	Traffic Count:
Acres: 2.56	Depth:	Lien & Encumb:
Survey:	Subdivide:	Undrgrnd Tank:
Plat Plan:	Parking Spaces: 21	Easements:
Lender Owned: No	Short Sale w/Lndr.App.Req: No	

Features

Parking Features: **Garage, 21+ Spaces, Paved Driveway, On Site**
Utilities: **Public Water, Public Sewer**

Other Property Info

Disclosure Declaration: **No**
Exclusions:
Year Established: **1955**
Year Established Source: **Public Record**

Tax Information

Pin #: **M:00U12 B:00047 L:00000**
Assessed: **\$503,100**
Tax: **\$5,906** Tax Year: **2025**
Book: **60681** Page: **398**
Cert: **000000065661**
Zoning Code: **C**
Zoning Desc: **Legal Conforming**
Map: Block: Lot:

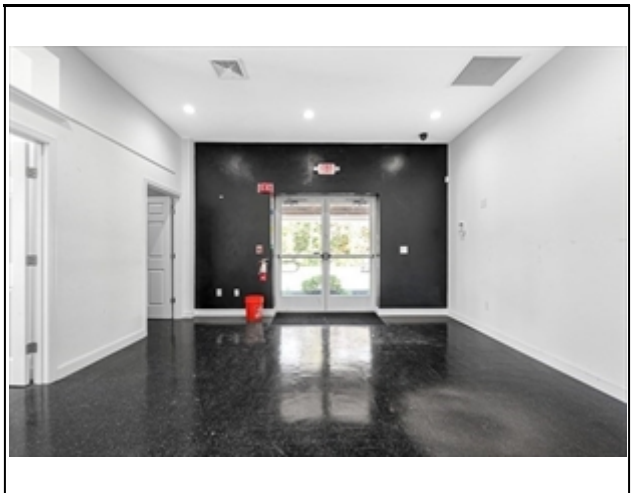
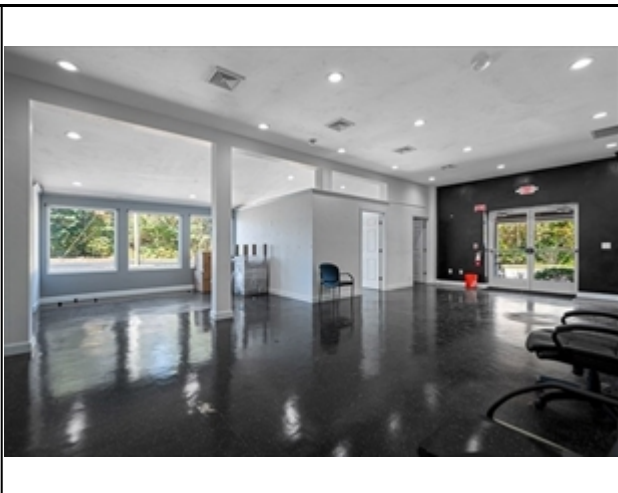
Market History for 10 Meadow Rd, Spencer, MA 01562-2012

MLS #	Date		DOM	DTO	Price
73439285	10/3/2025	Listed for \$999,900	26		\$999,900
Market History for Office Id: AN8160			26		
Market History for this property			26		

The information in this listing was gathered from third-party sources including the seller and public records. MLS Property Information Network, Inc., and its subscribers disclaim any and all representations or warranties as to the accuracy of this information. Content ©2025 MLS Property Information Network, Inc.

MLS # 73439285 - Active
10 Meadow Rd, Spencer, MA 01562-2012

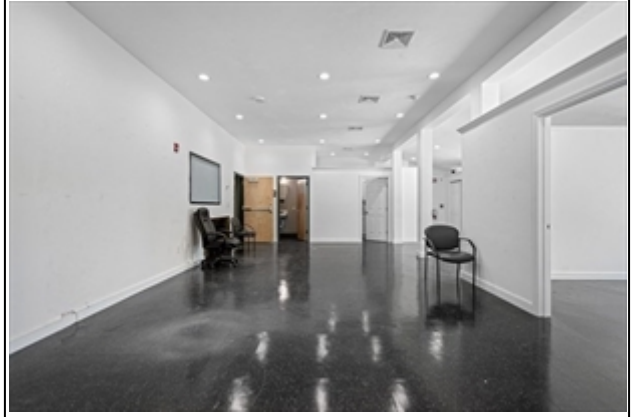
Commercial - Commercial
List Price: \$999,900



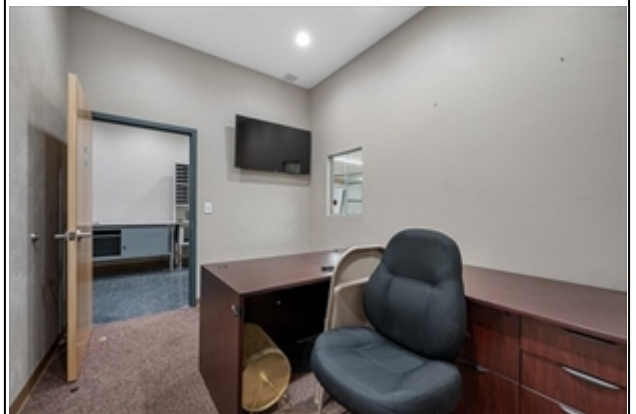
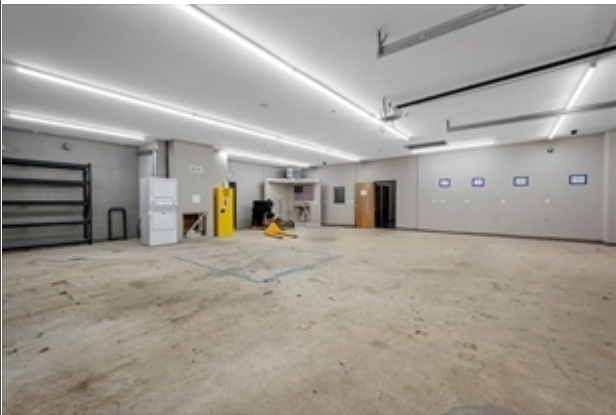
The information in this listing was gathered from third-party sources including the seller and public records. MLS Property Information Network, Inc., and its subscribers disclaim any and all representations or warranties as to the accuracy of this information. Content ©2025 MLS Property Information Network, Inc.

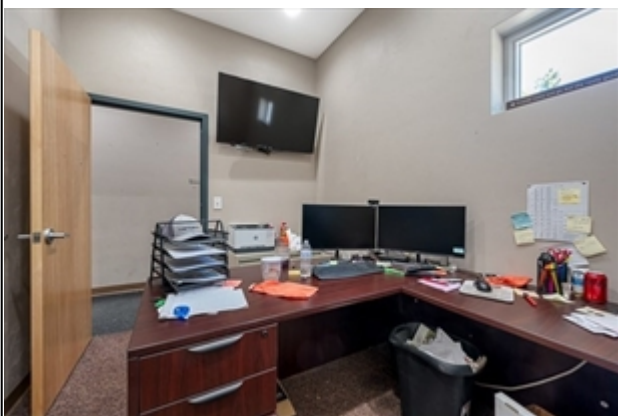
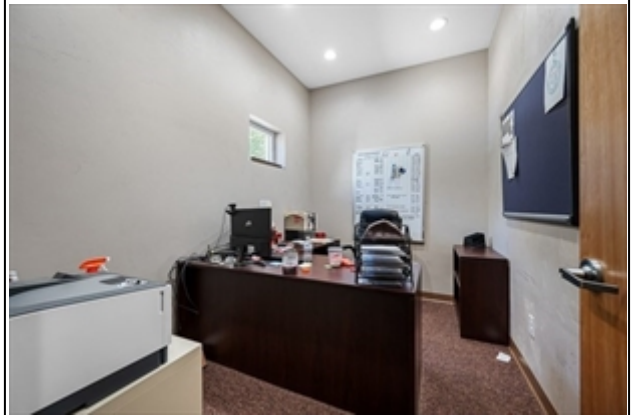
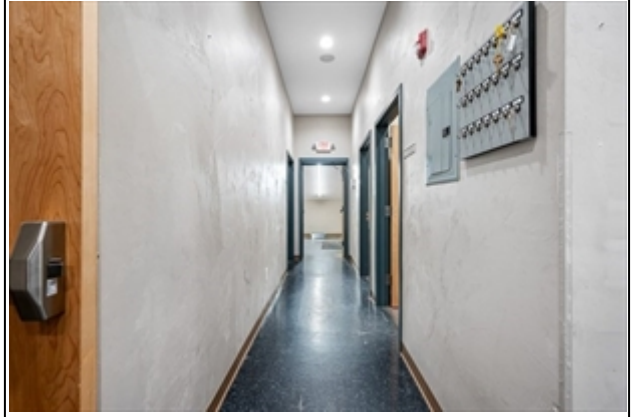
MLS # 73439285 - Active
10 Meadow Rd, Spencer, MA 01562-2012

Commercial - Commercial
List Price: \$999,900



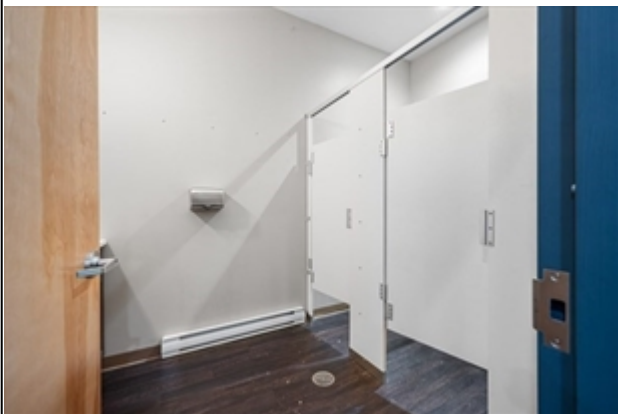
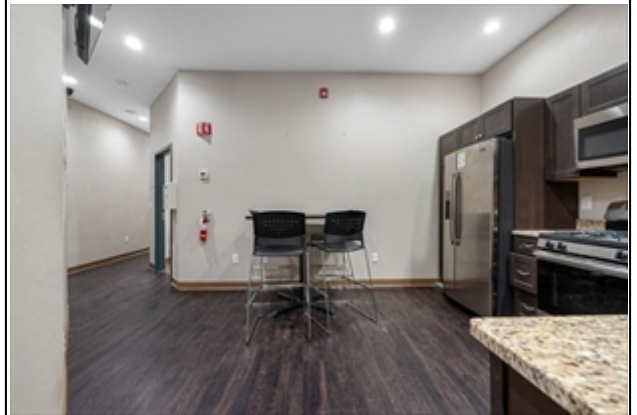
The information in this listing was gathered from third-party sources including the seller and public records. MLS Property Information Network, Inc., and its subscribers disclaim any and all representations or warranties as to the accuracy of this information. Content ©2025 MLS Property Information Network, Inc.



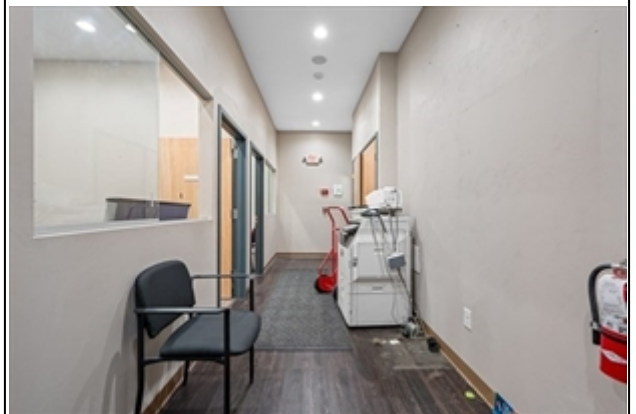
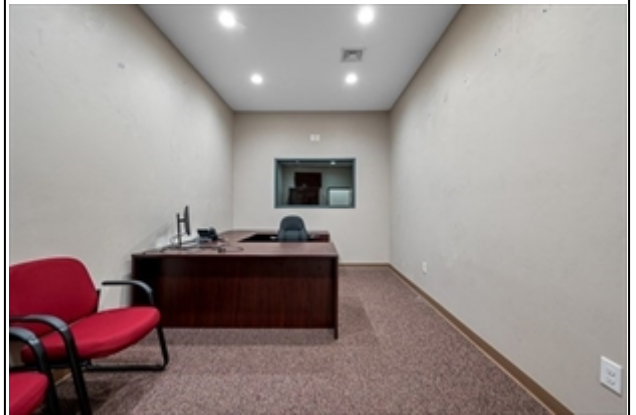
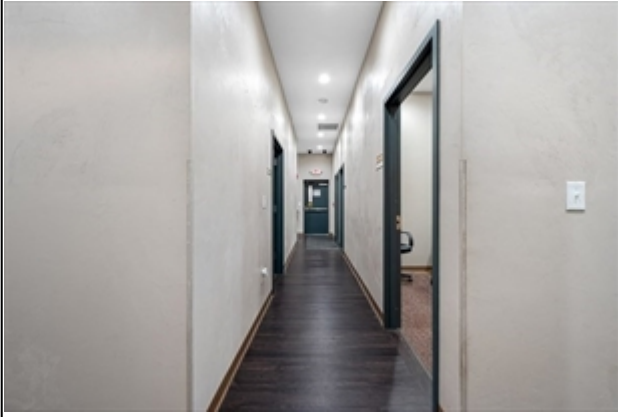


MLS # 73439285 - Active
10 Meadow Rd, Spencer, MA 01562-2012

Commercial - Commercial
List Price: \$999,900

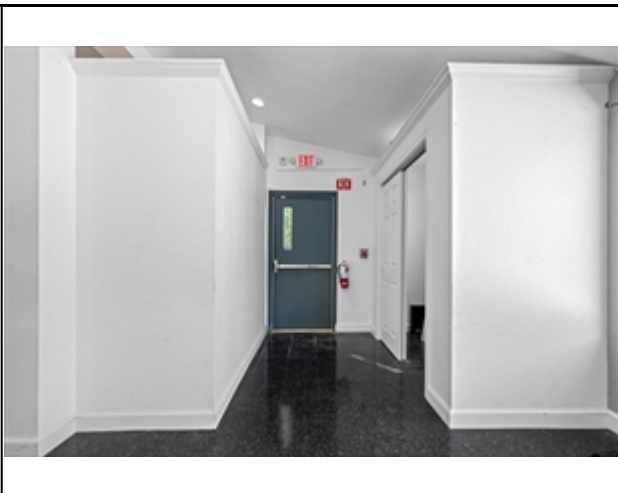


The information in this listing was gathered from third-party sources including the seller and public records. MLS Property Information Network, Inc., and its subscribers disclaim any and all representations or warranties as to the accuracy of this information. Content ©2025 MLS Property Information Network, Inc.



MLS # 73439285 - Active
10 Meadow Rd, Spencer, MA 01562-2012

Commercial - Commercial
List Price: \$999,900



The information in this listing was gathered from third-party sources including the seller and public records. MLS Property Information Network, Inc., and its subscribers disclaim any and all representations or warranties as to the accuracy of this information. Content ©2025 MLS Property Information Network, Inc.