



*5206*  
*N. Damen Ave.*

Prime Small-Shop  
Opportunity in  
Ravenswood  
*For Lease*

*Adam Thomas*  
847.219.6383  
adam.thomas@svn.com

*Logan Parsons*  
262.903.8417  
logan.parsons@svn.com

*Jason Hendrix*  
773.727.8434  
jason.hendrix@svn.com







## *Leasing Overview*

Asking Rent      \$1,500/Month Gross

Space Available      710 SF

Zoning      B1-2

Date Available      Now

Condition      2nd Generation

Sub-Market      Ravenswood

Aldermanic Ward      40th

*5206*  
N. Damen Ave.

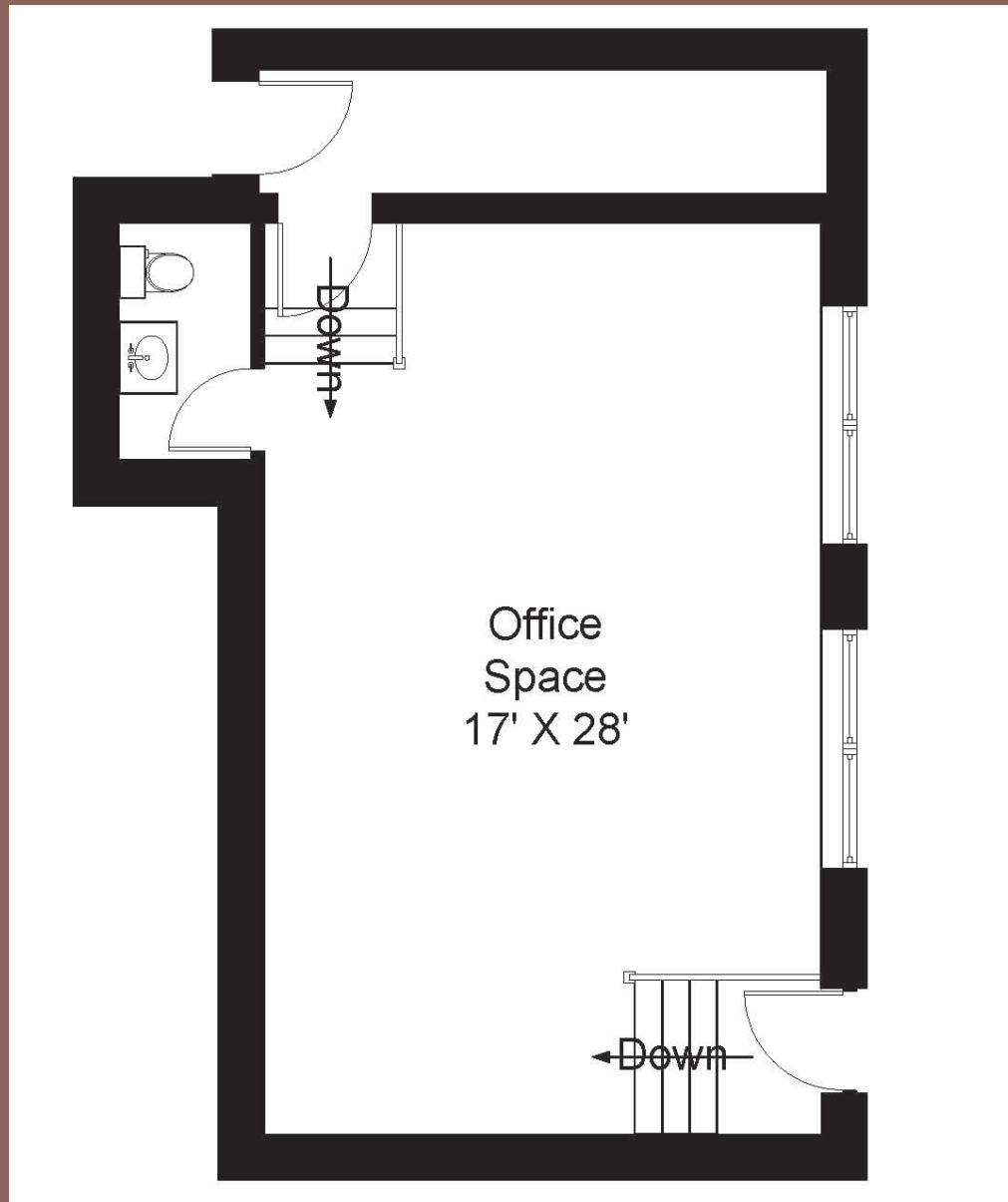


# Leasing Overview

- ◆ 710 SF 2nd generation retail/office space with open floor plan.
- ◆ Located in the heart of the Damen Avenue corridor in Ravenswood.
- ◆ Steps from Winnemac Park, the neighborhood's 40-acre green space and community anchor.
- ◆ Surrounded by popular local destinations including Side Practice Coffee, Yes Thai, and Maestro Tailor.
- ◆ Consistent 7-day foot traffic driven by Amundsen High School located directly across the street.
- ◆ Exceptional demographics comprise a high-income consumer base in an appreciating residential pocket.
- ◆ 92 Walk Score and easily accessible via the Damen Brown Line Station and multiple CTA bus routes (Foster & Damen).



## *Floor Plan*



710 SF AVAILABLE

*5206*  
N. Damen Ave.





*Additional Photos*

**5206**  
N. Damen Ave.





## ABOUT RAVENSWOOD

Ravenswood is a vibrant North Side neighborhood known for its strong community feel, dense residential base, and steadily growing retail corridor. Anchored by a mix of long-time locals, young professionals, and creative entrepreneurs, the area supports a diverse lineup of neighborhood-serving retail, restaurants, cafés, specialty shops, and experiential concepts. Its blend of historic character and modern infill creates an authentic, highly walkable environment that resonates with both residents and destination visitors.

Ravenswood benefits from excellent accessibility via CTA Brown Line stations (Montrose, Damen, and Irving Park), multiple bus routes, and convenient access to major arterials including Ashland Avenue and Lincoln Avenue. Surrounded by established neighborhoods such as Lincoln Square, Uptown, and Andersonville, the area captures strong cross-traffic and consistent footfall. For retailers seeking a dynamic, community-driven location with proven demand and long-term stability, Ravenswood offers a compelling opportunity.

## Sub-Market Overview



### AREA DEMOGRAPHICS

	0.25 Miles	0.5 Miles	1 Mile
Total Population	4,107	13,431	59,549
Average Age	36.8	36.5	36.7
Total Households	2,027	6,705	29,768
People Per Household	1.4	1.4	1.4
Average Household Income	\$150,525	\$210,279	\$199,021
Average Home Value	\$445,191	\$439,227	\$434,067

*Demographic Source: Applied Geographic Solutions via Sites USA.*





*SVN® Chicago Commercial*

940 West Adams Street, 2nd Floor  
Chicago, Illinois 60607

[svnchicago.com](http://svnchicago.com)

*Adam Thomas*  
847.219.6383  
[adam.thomas@svn.com](mailto:adam.thomas@svn.com)

*Logan Parsons*  
262.903.8417  
[logan.parsons@svn.com](mailto:logan.parsons@svn.com)

*Jason Hendrix*  
773.727.8434  
[jason.hendrix@svn.com](mailto:jason.hendrix@svn.com)

All SVN® Offices Independently Owned & Operated. The information listed in this proposal has been obtained from sources we believe to be reliable, however we accept no responsibility for its correctness.