



**HARD TO FIND SINGLE
OFFICE/RETAIL UNITS
IN THE HEART OF DOWNTOWN
FOR LEASE
\$695/MO, GROSS
325-350 SQUARE FEET**

**1113, 1117, 1119 K Street
Modesto, CA 95354**

DESCRIPTION

- Great building with individual offices facing K street
- Across from Wells Fargo Bank, next to Brighter Side sandwich shop and within 1/2 block to US Bank, the City of Modesto and Stanislaus County Offices as well as many other eateries.
- Each unit has own private small bathroom
- One parking space per unit
- Perfect for office or retail



PMZ
SINCE 1957

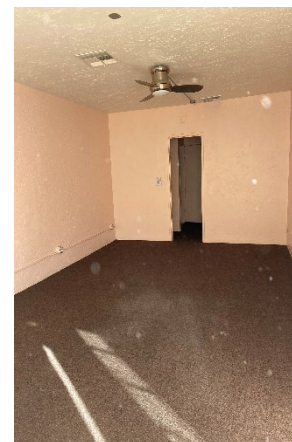
COMMERCIAL
REAL ESTATE

Josh Bower
Senior Associate
+1 209 988 8428
jbower@pmz.com
DRF#01905264

David Quiñonez
Broker
+1 209 614 5653
davidq@pmz.com
DRF#01853323

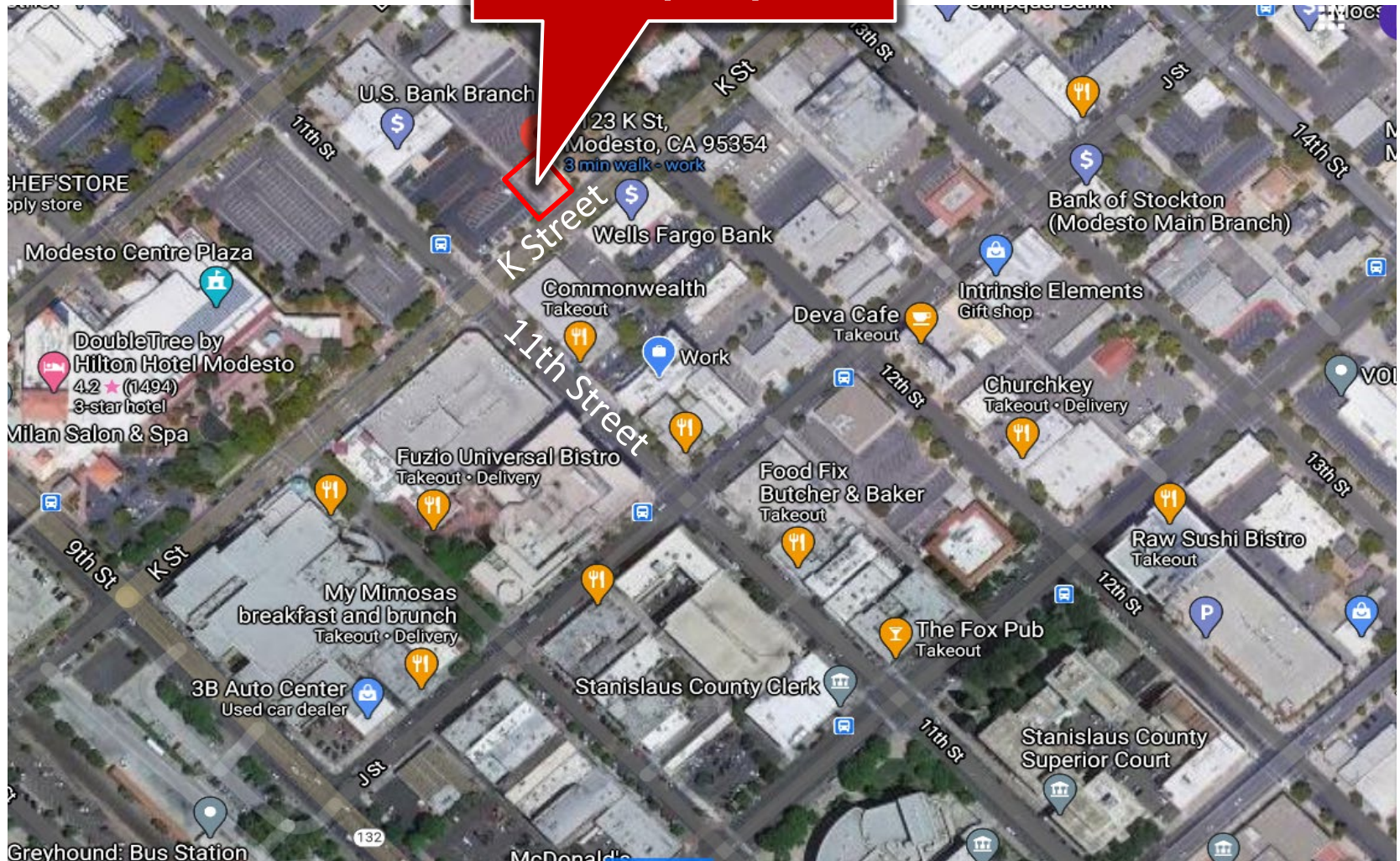
PHOTOS

Suite	1113 K Street	1117 K Street	1119 K Street
Size:	325 SQ FT	350 SQ FT	350 SQ FT
Lease Rate:	\$695/month gross	\$695/month gross	\$695/month gross
Description:	<ul style="list-style-type: none"> • Open area • Small bathroom • 1 parking space 	<ul style="list-style-type: none"> • Open area • Small bathroom • 1 parking space 	<ul style="list-style-type: none"> • Open area • Small bathroom • 1 parking space



**Subject
Property**

Aerial Photo



PMZ
SINCE 1957

COMMERCIAL
REAL ESTATE

Josh Bower
Senior Associate
+1 209 988 8428
jbower@pmz.com
DRE#01905264

David Quiñonez
Broker
+1 209 614 5653
davidq@pmz.com
DRE#01853323