



# FOR SALE | LEASE

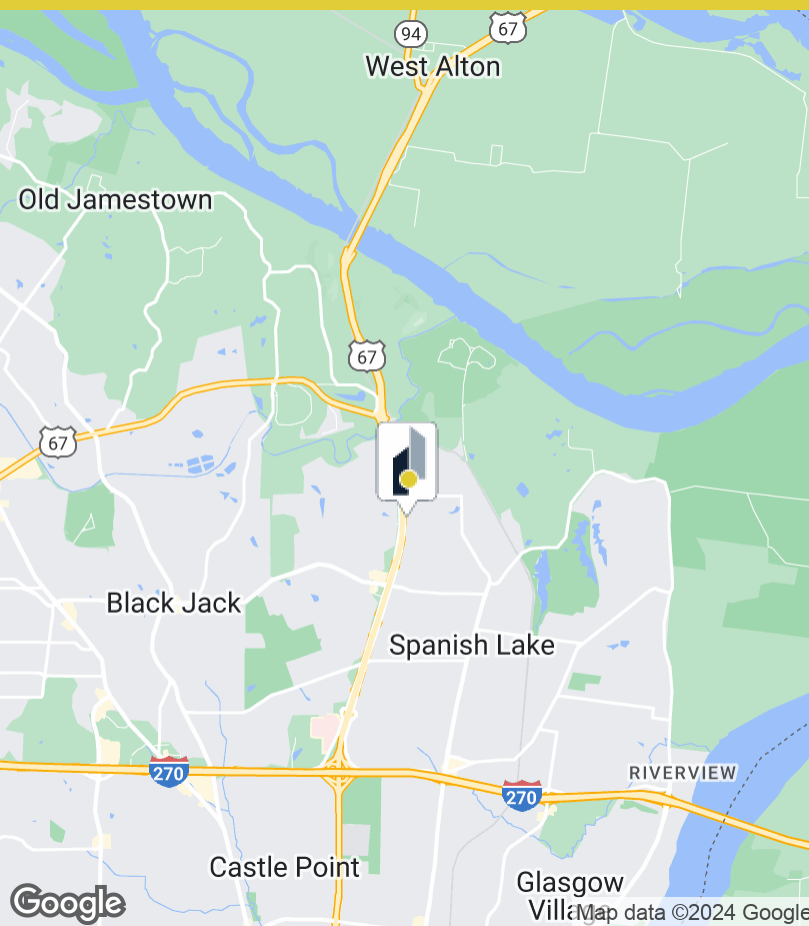
12440 Lusher Road | Saint Louis, MO 63138

# 12440 Lusher Road



**For Sale:**  
Contact Broker for Pricing

**For Lease:**  
\$12.00 SF/yr (MG)



## Spaces

Suite 12450

## Space Size

1,025 SF

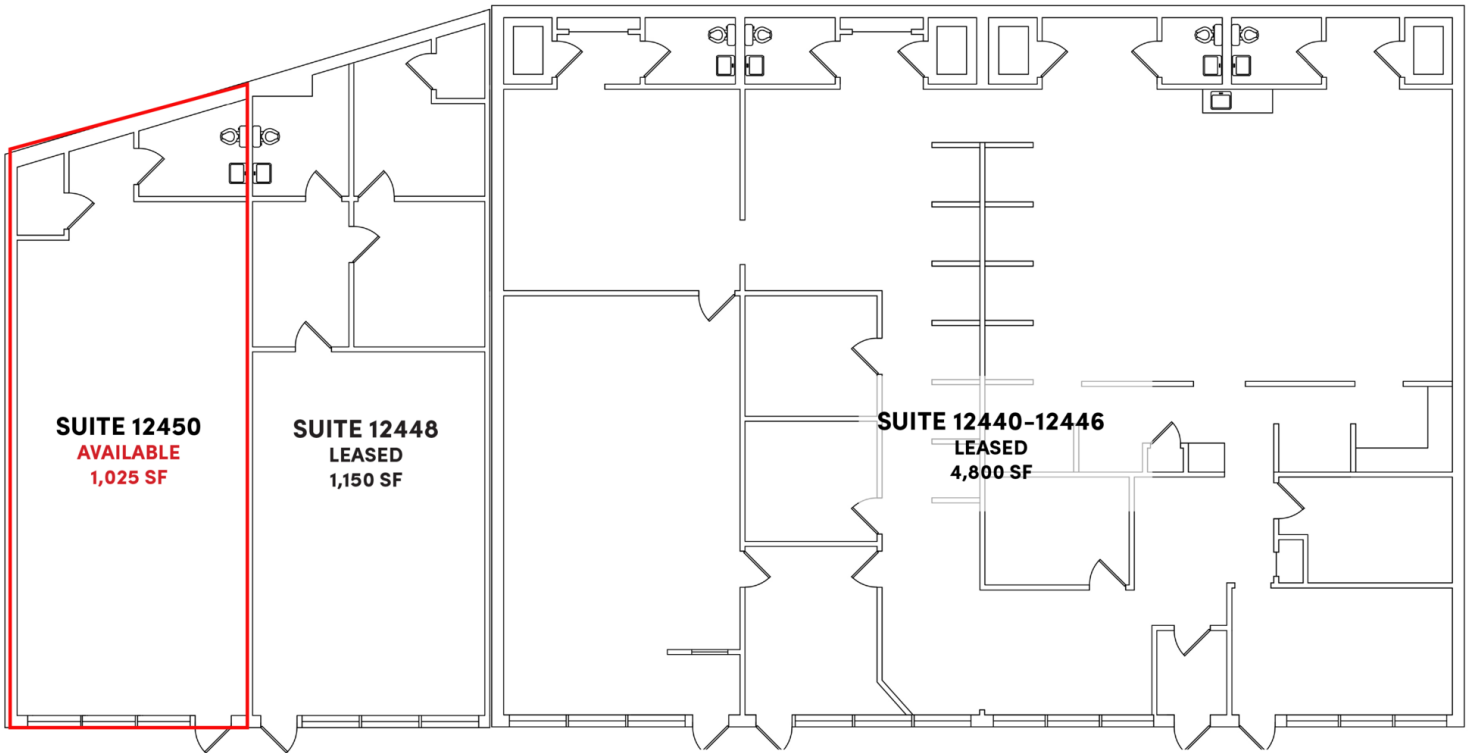
## Property Highlights

- 6,975 SF Building
- Great exposure to Lusher Road and Highway 367
- Surrounding Businesses include: Walgreens, Bank of America, Shop N' Save, Dollar General & New QuikTrip
- 31,853 VPD on Highway 367
- Metro Transit access directly in front of building
- Located in Unincorporated St. Louis County
- MG charges estimated at \$1.80 PSF
- OWNER/BROKER

This information has been obtained from sources believed reliable but has not been verified for accuracy or completeness. You should conduct a careful, independent investigation of the property and verify all information. Any reliance on this information is solely at your own risk.

# Floor Plan

12440 Lusher Road | St. Louis, MO 63138



## AVAILABLE SPACES:

• Suite 12450 - Office Use

• **FOR LEASE:** \$12.00 PSF Modified Gross

# Broker Contact



**Drew Clary**

Principal

(314) 744-8978

[dclary@intcre.com](mailto:dclary@intcre.com)