

# 3125 MAIN STREET

Kansas City, MO



INFILL OPPORTUNITY  
ON STREETCAR LINE!



Close proximity to numerous  
retail amenities



Minutes from the new Main St.  
Streetcar extension



Development opportunity in  
active Midtown submarket

FOR SALE



CBRE



# OFFERING HIGHLIGHTS

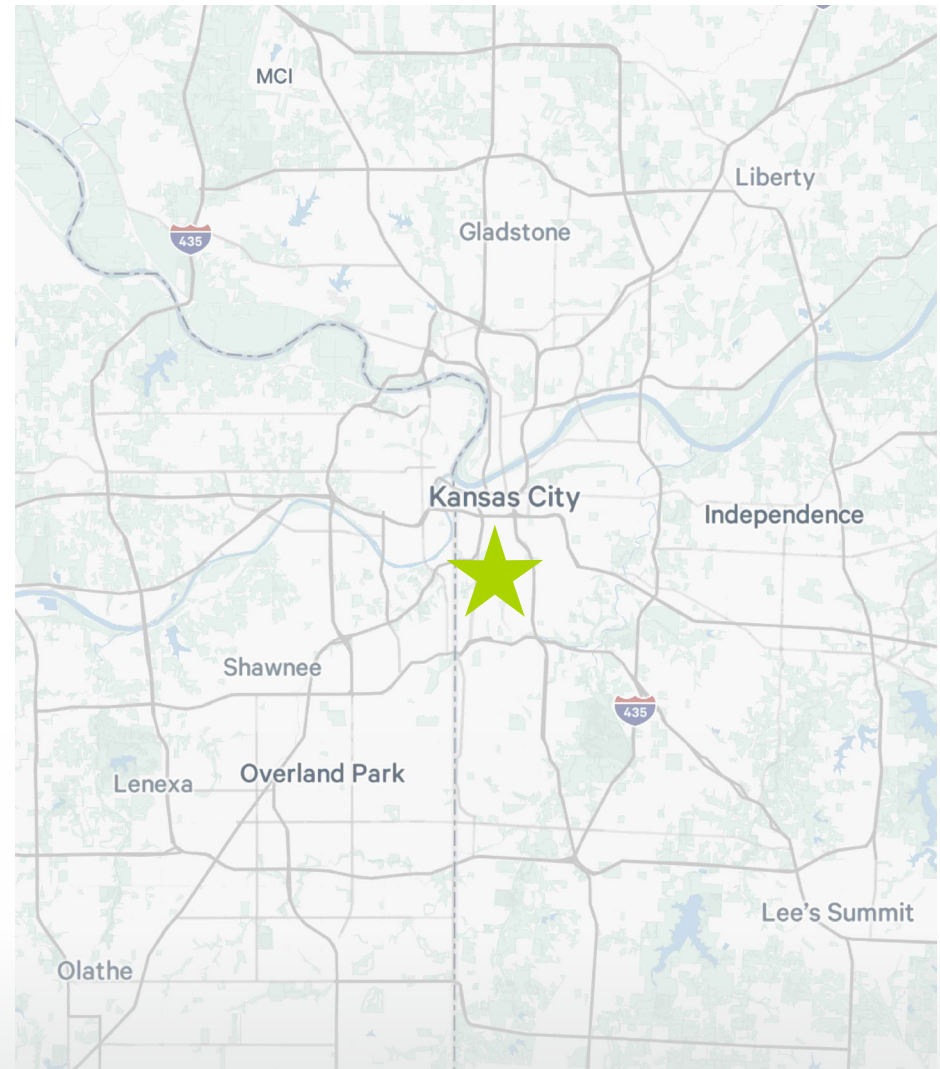


## OFFERING SUMMARY

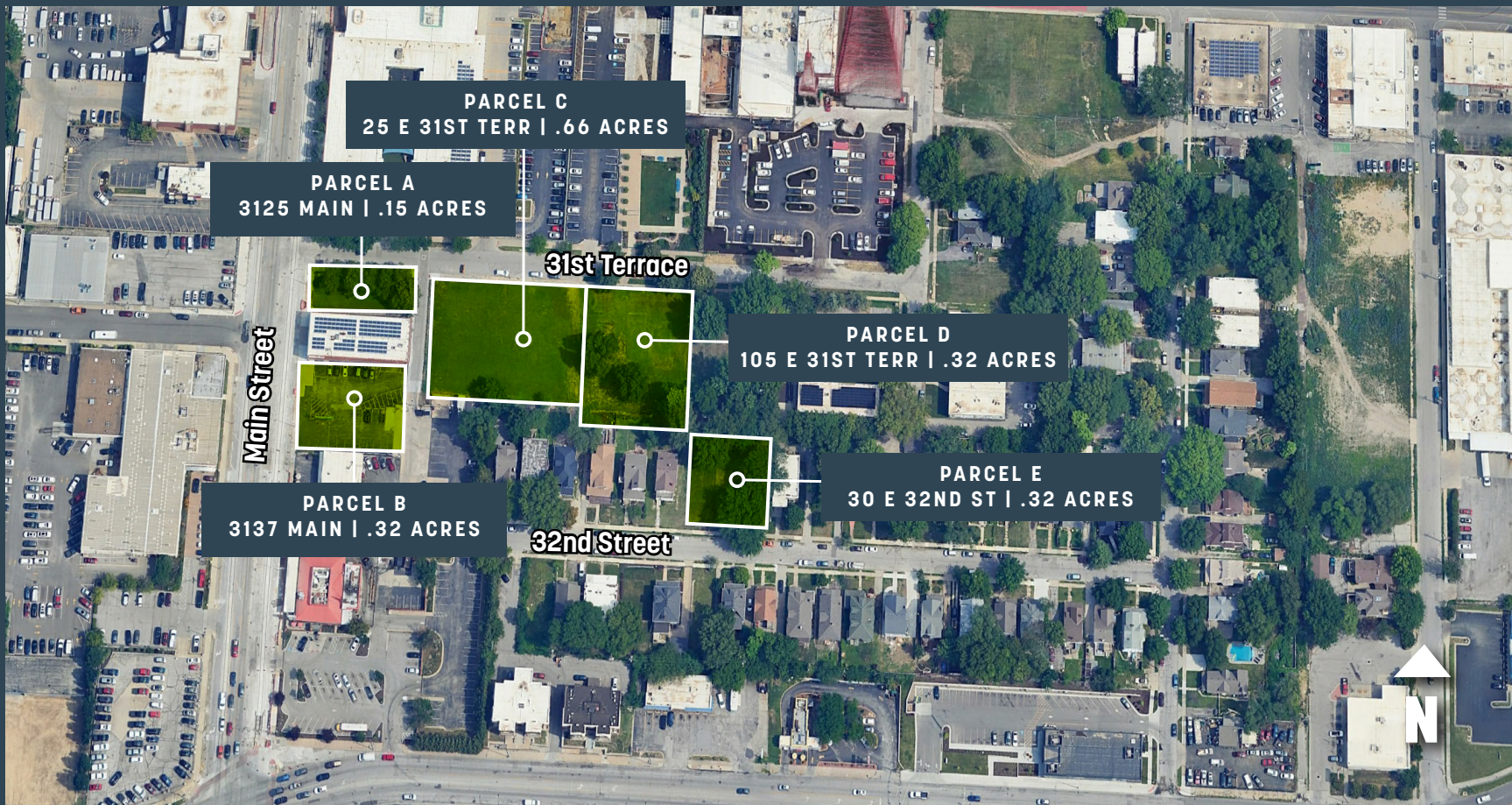
<b>Address:</b>	3125 Main Street, Kansas City, MO
<b>Site Size:</b>	± 1.77 Acres (± 77,101 SF)
<b>Zoning:</b>	B4-5 (Heavy Business/Commercial) R1-5 (Residential)
<b>Future Land Use:</b>	Mixed-Use Neighborhood, Residential Medium Density
<b>RE Taxes:</b>	\$34,915 (\$0.45) PSF
<b>Sale Price:</b>	\$2,500,000 (\$32.43 PSF)

## OFFERING OVERVIEW

- Rare redevelopment opportunity with immediate access to new KC Streetcar stop at 31st & Main
- Highly Visible Location in a heavily trafficked corridor
- Surrounded by significant re-development projects in Midtown KC
- Utilities Available
- Potential for incentives



3125 Main Street | Kansas City, MO



Exclusive Agents:

**Joe Giwa**

Land/Development Site Sales  
+1 816 968 5812  
joe.giwa@cbre.com

**Bob Fagan**

Senior Vice President  
+1 816 616 3919  
robert.fagan@cbre.com

**CBRE**

© 2025 CBRE, Inc. All rights reserved. This information has been obtained from sources believed reliable, but has not been verified for accuracy or completeness. You should conduct a careful, independent investigation of the property and verify all information. Any reliance on this information is solely at your own risk. CBRE and the CBRE logo are service marks of CBRE, Inc. All other marks displayed on this document are the property of their respective owners, and the use of such logos does not imply any affiliation with or endorsement of CBRE. Photos herein are the property of their respective owners. Use of these images without the express written consent of the owner is prohibited.