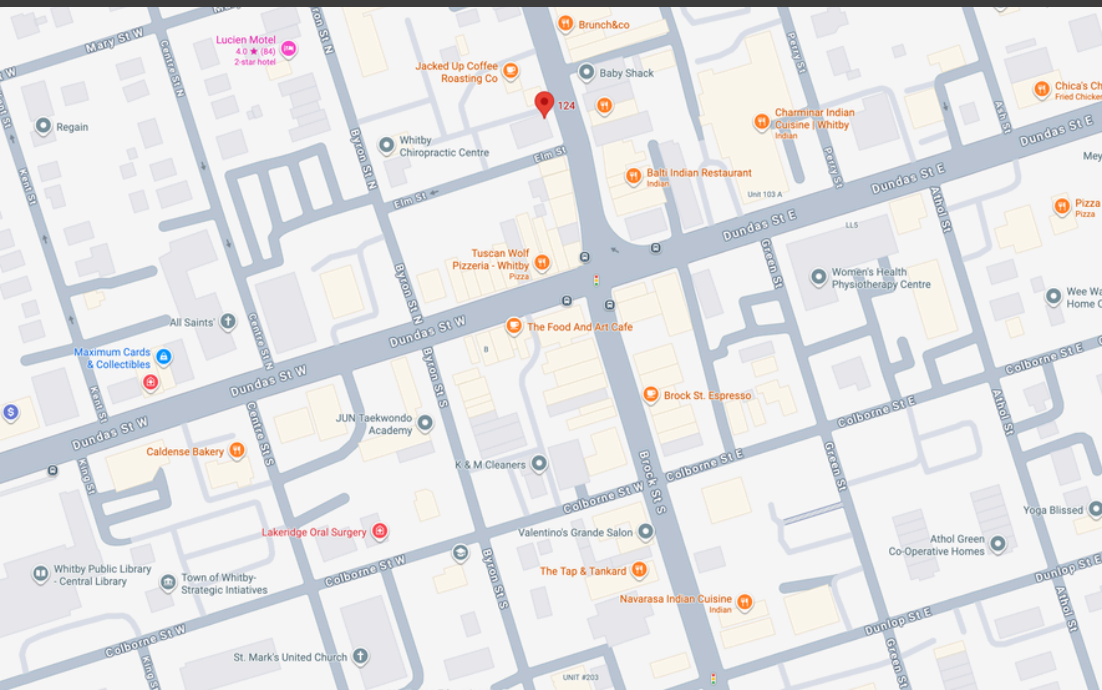


124 BROCK STREET NORTH WHITBY



INCREDIBLE DOWNTOWN LOCATION | WALKABLE AMENITIES



DOWNTOWN WHITBY



CONTACT

RYAN BELMONTE, ABR
President & Broker of Record
Belmonte Real Estate Brokerage
905-240-5001
belmonterealestate@gmail.com

Walkable Amenities

- Station No.3 Condos
- The Four Corners
- Whitby Public Library
- Residential Homes
- Multiple Shops/Restaurants
- Clinics, Banks, Parks
- Main Transit Route
- Minutes to 401

124 BROCK STREET NORTH



124 BROCK STREET NORTH

STREET NORTH
WHITBY

FLOOR PLAN



CONTACT

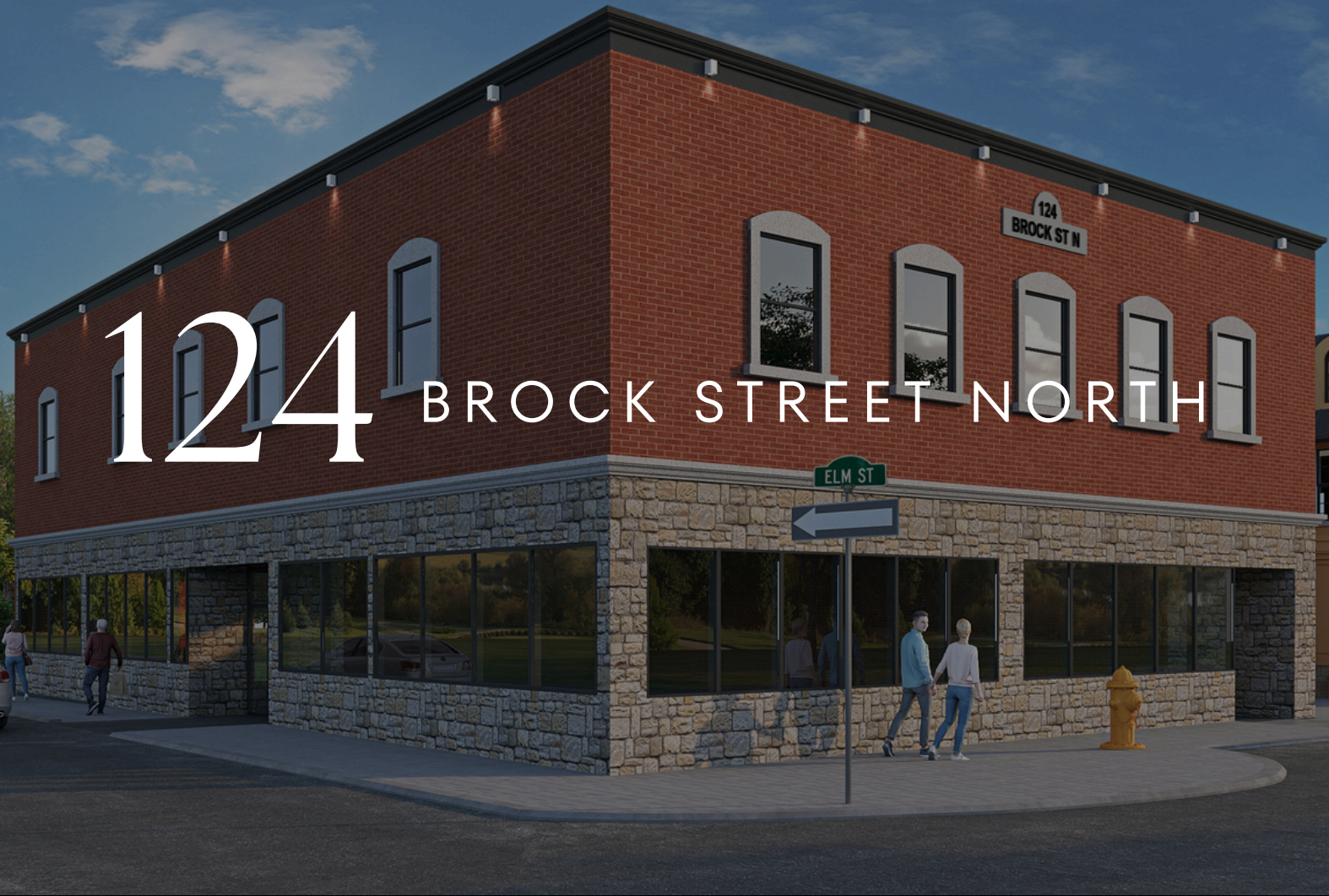
RYAN BELMONTE, ABR
President & Broker of Record
Belmonte Real Estate Brokerage
905-240-5001
belmonterealestate@gmail.com



124 Brock St. N.

Commercial Retail & Professional Space
Located in the Heart of Downtown Whitby.
Situated On The West Side Of Brock Street & Elm St., Just North of Dundas. High Traffic Area Offering Excellent Street Exposure/Signage in the Whitby Business Improvement Area of the Downtown Core. Multiple entrances and expansive windows providing substantial natural light. Easy Access to Hwy 401, Municipal & Street parking Available. Landlord would consider demising the unit into 2 smaller units!





CONTACT

RYAN BELMONTE, ABR
President & Broker of Record
Belmonte Real Estate Brokerage
905-240-5001
belmonterealestate@gmail.com



▪ Residential ▪ Commercial ▪ Investment