

For Lease

Powerline Park

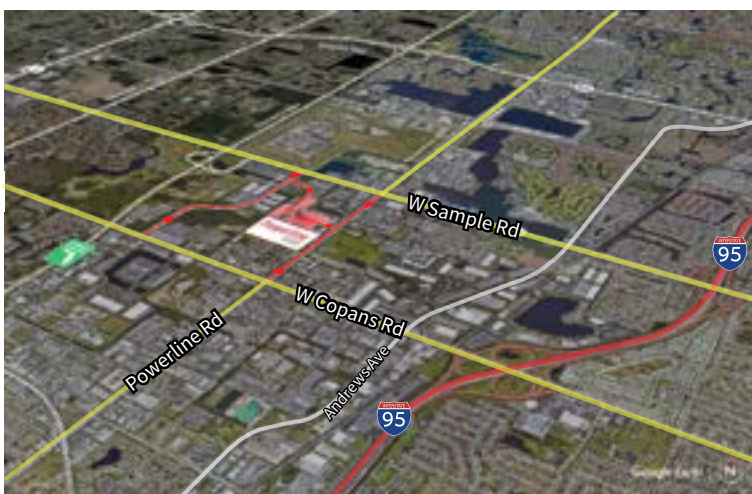
2205 NW 30th Place
Pompano Beach, FL 33069



Industrial Space For Lease
14,496 SF

Powerline Park

2205 NW 30th Place, Pompano Beach, FL 33069



Location

- Easy access off Sample Road and Powerline Road
- Excellent access to I-95 and the Florida Turnpike
- Equidistant to Fort Lauderdale/Hollywood International Airport and Palm Beach International Airport

Space Features

- 14,496 SF total
- 2,906 SF of office
- 11,590 SF of warehouse
- 20' clear height
- Two (2) grade level doors
- Two (2) dock high doors (well)
- Parking ratio: 2.0/1,000 sf
- Available 5/1/2024



© 2023 Jones Lang LaSalle IP, Inc.

Yuri Quispe

D +1 954 233 3462

M +1 772 201 5305

yuri.quispe@jll.com

Peter Sheridan

D +1 954 653 3235

M +1 954 439 4941

peter.sheridan@jll.com

Peter Johnston

D +1 954 233 3429

M +1 954 980 3224

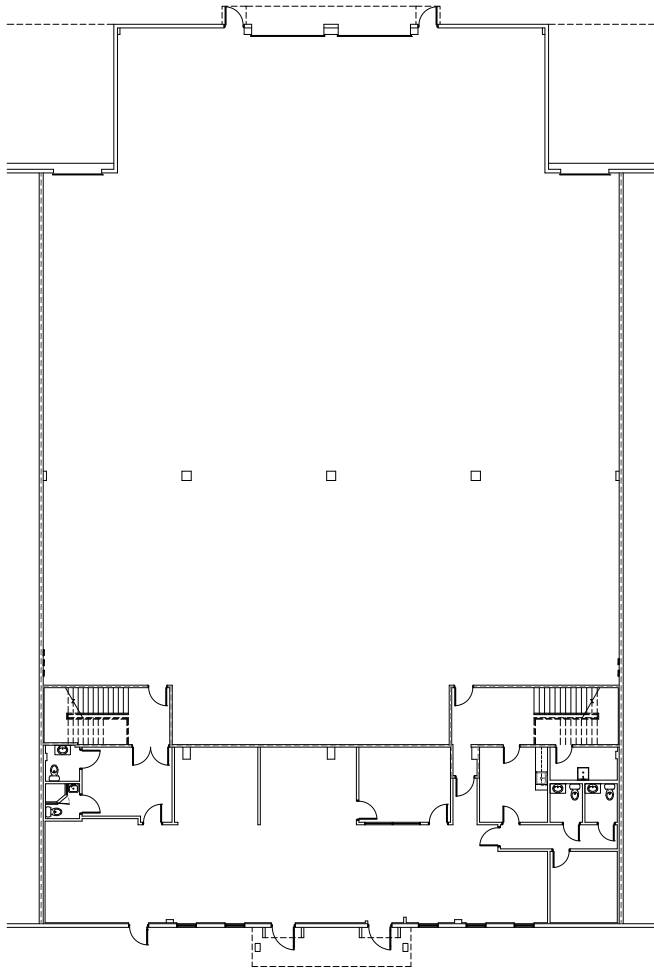
peter.johnston1@jll.com



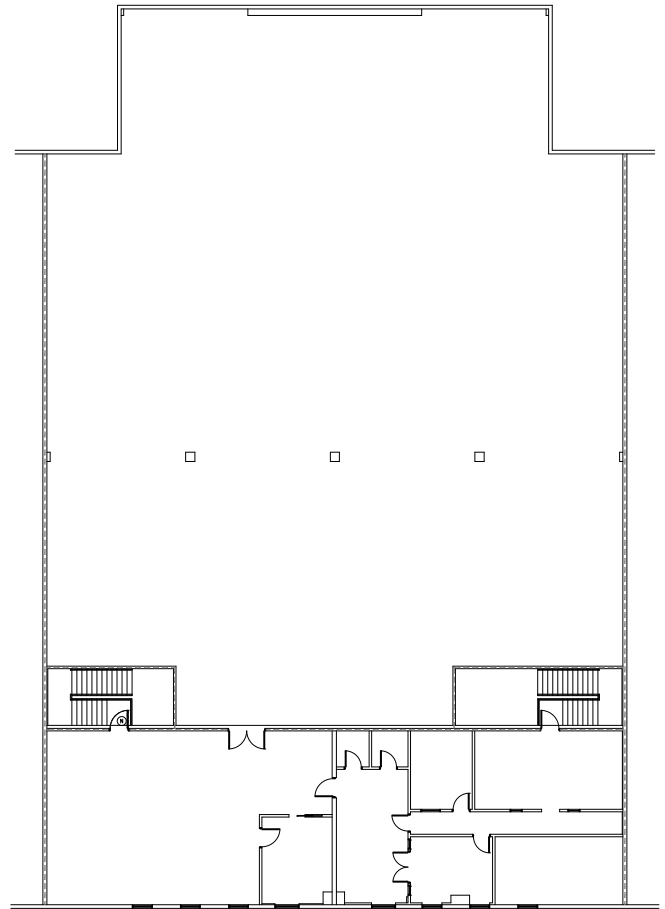
Powerline Park Floor Plans - Bays 2 & 3

Total: 14,496 SF
Office: 2,906 SF
Warehouse: 11,590 SF

Ground Floor



Mezzanine



For Lease

Powerline Park

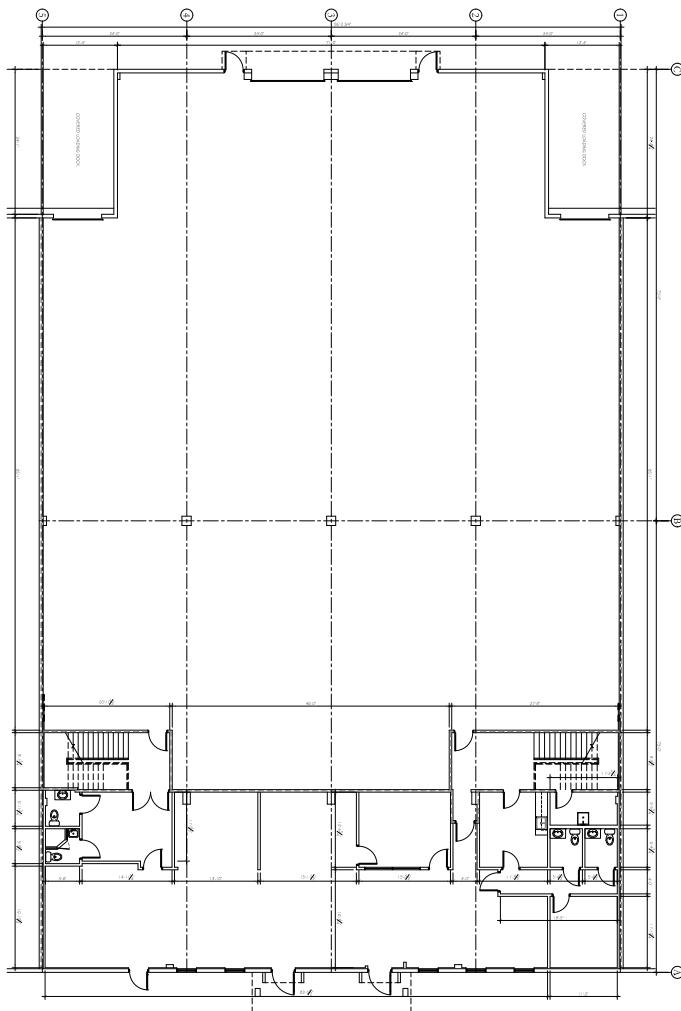
2205 NW 30th Place, Pompano Beach, FL 33069

Powerline Park

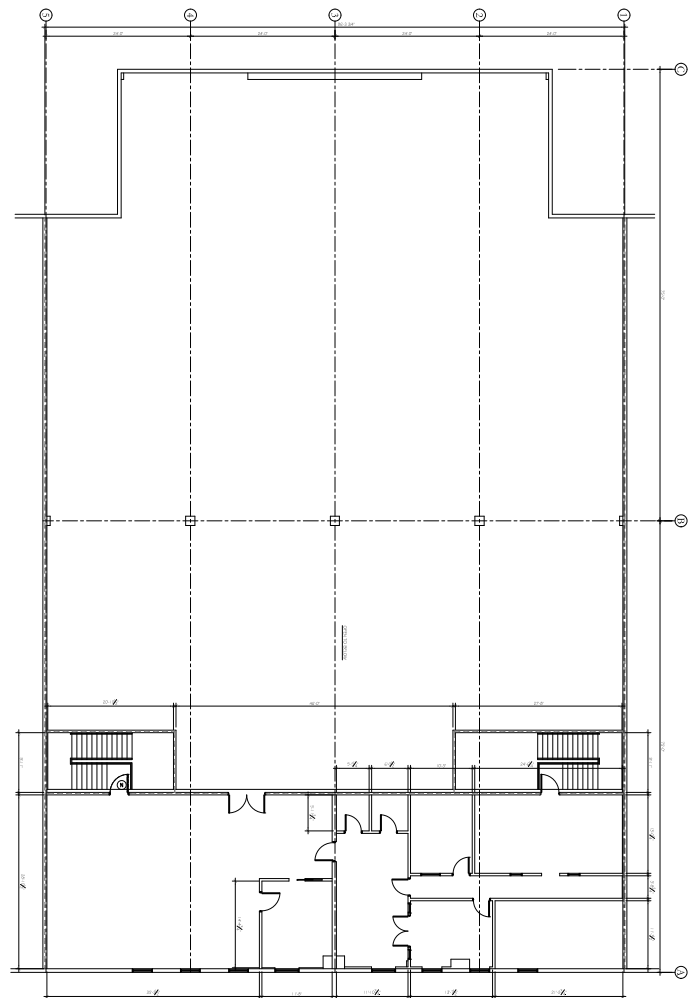
Dimensioned Floor Plans - Bays 2 & 3

Total: 14,496 SF
Office: 2,906 SF
Warehouse: 11,590 SF

Ground Floor



Mezzanine



Powerline Park Site Plan

■ - Subject Property



Building	Bay	Total (SF)	Office (SF)	Warehouse (SF)	Loading	Clear Height	Available Date
1	2 & 3	14,496	2,906	11,590	2 G / 2 DH	20'	5/1/2024

