

# FOR LEASE

6405 Branch Hill Guinea Road Loveland, OH 45140



## Retail | 2,000 SF

- Branch Hill Commons - Loveland Ohio
- Outdoor Area Great For Restaurant or Daycare
- Easy access to Shopping & Interstate
- Loveland / Miami Township
- Rent: \$2,916.66/Month All In + Utilities

### DEMOGRAPHICS

STATS	POPULATION	AVG. HH INCOME
1 MILE	4,879	\$152,183
3 MILES	36,119	\$133,243
5 MILES	84,248	\$119,080



# FOR LEASE

6405 Branch Hill Guinea Road Loveland, OH 45140



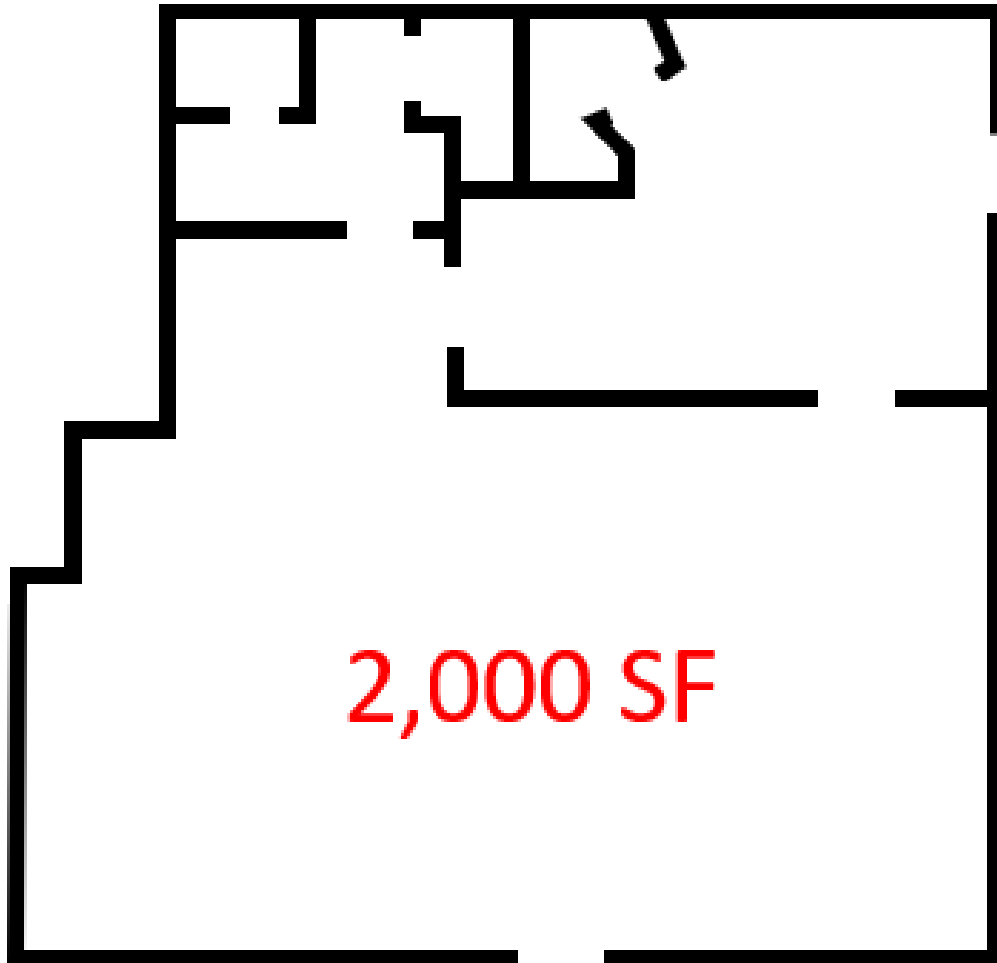
✉ **Cindy Metz**  
+1 513 322 6303  
cmetz@bergman-group.com

✉ **Hayden Batchelor**  
+1 513 322 6318  
hbatchelor@bergman-group.com

**NABergman**

# FOR LEASE

6405 Branch Hill Guinea Road Loveland, OH 45140



# FOR LEASE

6405 Branch Hill Guinea Road Loveland, OH 45140



**YOUR CLEANERS**  
OHIO PRAXTIC

**CARRIAGE HOUSE AUTO SPA**

**Dominos**  
Pizzeria

**Great Street Food**  
KEVIN'S

**BEN KASEFF, DMD**  
Gentle Dentistry

**SITE**

**Prodigy**  
PERSONALITY

**Bank of America**

**GOODARD SCHOOLS**

**Timmy's Wok**  
張家興  
**SUBWAY**

**United Dairy Farmers**

**Kroger FUEL**  
OPEN

**Huntington**

**EL PABANCO**  
Authentic MEXICAN CUISINE

**Swaters**

**Walgreens**

**ATHLETE INSTINCTS**

**Magnolia Springs**  
LOVELAND  
SENIORE LIVING

75

Google

Map data ©2023 Imagery ©2023 Maxar Technologies, U.S. Geological Survey, USDA/FPAC/GEO

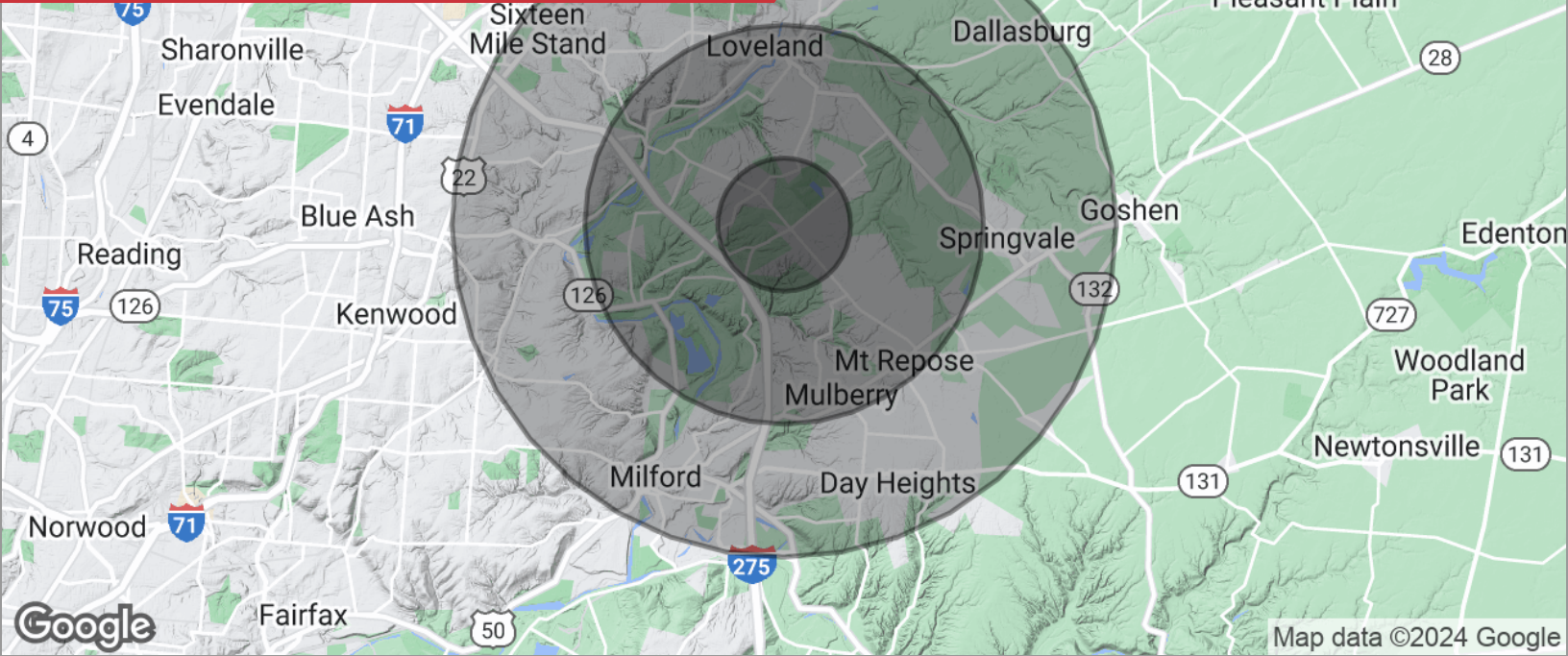
✉ **Cindy Metz**  
+1 513 322 6303  
cmetz@bergman-group.com

✉ **Hayden Batchelor**  
+1 513 322 6318  
hbatchelor@bergman-group.com

**NABergman**

# FOR LEASE

6405 Branch Hill Guinea Road Loveland, OH 45140



## POPULATION

	1 MILE	3 MILES	5 MILES
Total population	4,879	36,119	84,248
Median age	43.8	42.7	40.9
Median age (male)	43.8	42.8	41.1
Median age (Female)	44.4	43.6	41.1

## HOUSEHOLDS & INCOME

	1 MILE	3 MILES	5 MILES
Total households	1,719	13,430	32,475
# of persons per HH	2.8	2.7	2.6
Average HH income	\$152,183	\$133,243	\$119,080
Average house value	\$696,170	\$388,882	\$357,158

\* Demographic data derived from 2020 ACS - US Census

✉ **Cindy Metz**  
+1 513 322 6303  
cmetz@bergman-group.com

✉ **Hayden Batchelor**  
+1 513 322 6318  
hbatchelor@bergman-group.com

**NABergman**