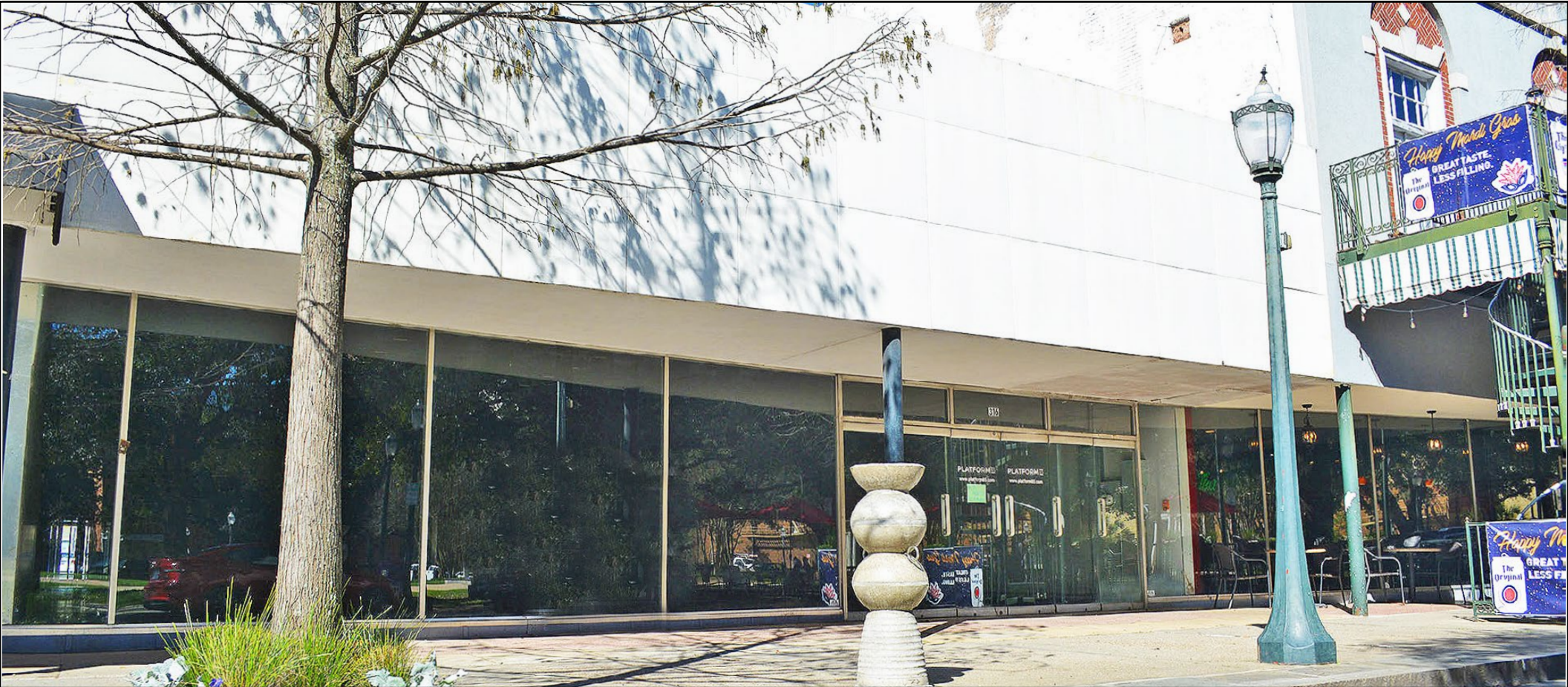


FOR LEASE



316 Dauphin Street | Mobile, AL



Josh W. Hall

251.689.9002 | jwhall@cre-mobile.com



**CRE
MOBILE**
CRE-MOBILE.COM

FOR LEASE



316 Dauphin Street | Mobile, AL



SIZE

5,500± SF Street Front Retail



VISIBILITY

Excellent Downtown Visibility, Signage and Walk-ability



LAYOUT

Large, Open Layout that is a Perfect Blank Canvas for Any Retail User



PARKING

Private Parking Available



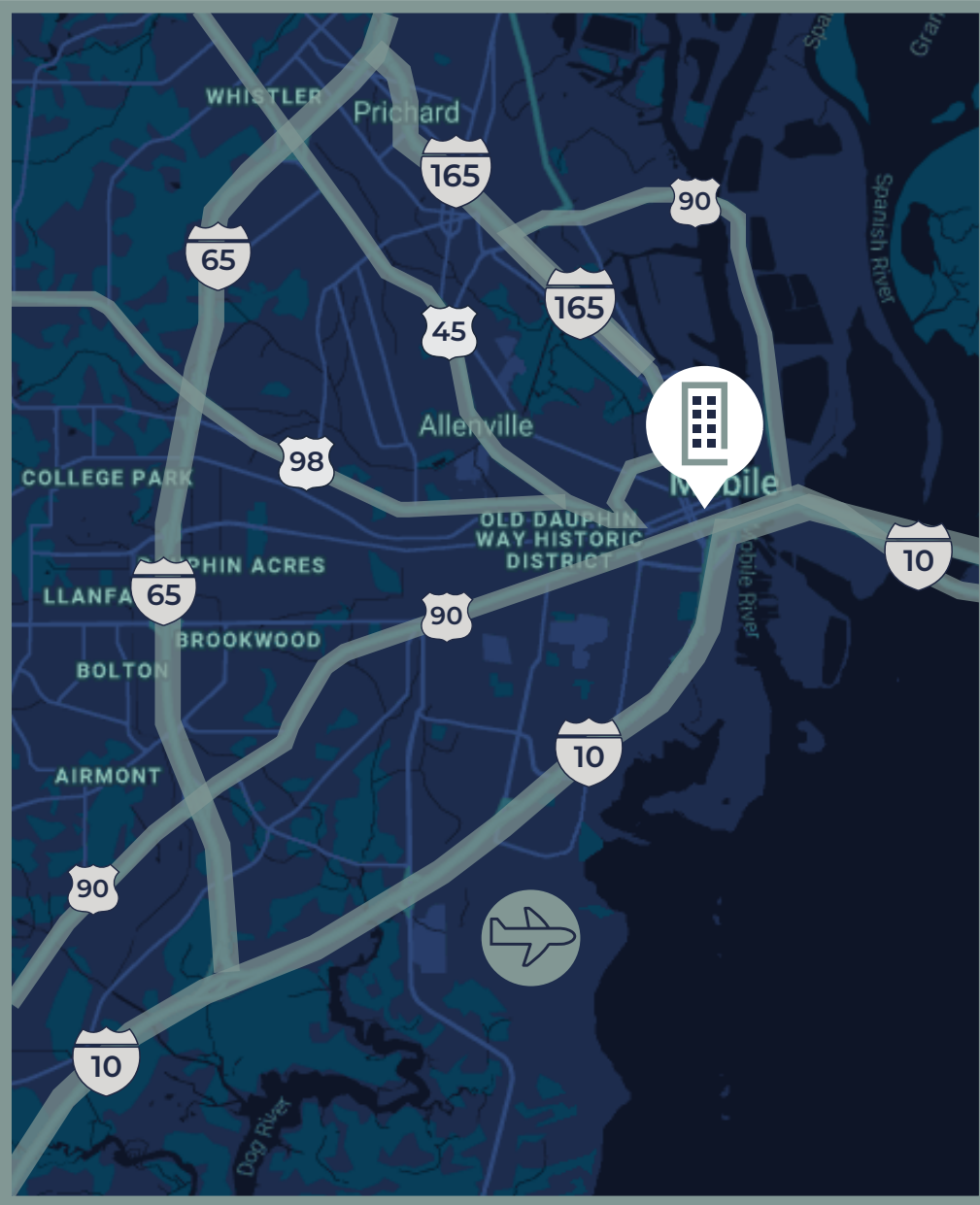
PRIME LOCATION

Located Right Next to Spot of Tea and Across from Cathedral Square. Within the Downtown Entertainment District and the Art Walk Path.



LEASE RATE

\$17.00 SF/YR NNN



LOCATION ADVANTAGES



Conveniently Located

Located in the heart of downtown Mobile on Dauphin St. with easy access to I-10, I-165 & Government Blvd.



Walkable Location

Extremely walkable location that is proximate to Federal Buildings, restaurants, shops, office buildings and more!



About CRE Mobile

CRE Mobile is a team of seasoned professionals with over 170 years of experience in all facets of real estate with a unique presence as a full-service commercial real estate firm in southwest Alabama. We align our goals with yours because we recognize the future of your asset depends upon our performance to deliver results to you. Success comes from being on the same page—from the big picture down to the small details. We are here to help you — find your space —



NO WARRANTY OR REPRESENTATION, EXPRESS OR IMPLIED, IS MADE AS TO THE ACCURACY OF THE INFORMATION CONTAINED HEREIN, AND THE SAME IS SUBMITTED SUBJECT TO ERRORS, OMISSIONS, CHANGE OF PRICE, RENTAL OR OTHER CONDITIONS, PRIOR SALE, LEASE OR FINANCING, OR WITHDRAWAL WITHOUT NOTICE, AND OF ANY SPECIAL LISTING CONDITIONS IMPOSED BY OUR PRINCIPALS. NO WARRANTIES OR REPRESENTATIONS ARE MADE AS TO THE CONDITION OF THE PROPERTY NOR ANY HAZARDS CONTAINED THEREIN ARE ANY TO BE IMPLIED.

cre-mobile.com



CRE
MOBILE

FIND
YOUR
SPACE.