



Industrial Building for Sale

**4323 S WASHINGTON AVENUE
INDEPENDENCE, MISSOURI**

Property Highlights

- 6,002 sf building
- 0.58 acre site
- Constructed in 1994
- 1,550 (±) sf of office and sales counter space
- 12.5' - 15' ceiling height
- One dock-high door
- One 12x10 drive-in door
- Proximity and access to I-70
- Sale price \$795,000

For information, please contact:

John Faur, CCIM

Associate Director

t 816-268-4243

jfaur@nzimmer.com

Richard H. Chamberlain, SIOR, LEED AP

Managing Director, Principal

t 816-268-4222

rchamberlain@nzimmer.com

1220 Washington Street, Suite 300
Kansas City, MO 64105

nrmkzimmer.com



**NEWMARK
ZIMMER**

The information contained herein has been obtained from sources deemed reliable but has not been verified and no guarantee, warranty or representation, either express or implied, is made with respect to such information. Terms of sale or lease and availability are subject to change or withdrawal without notice.

4323 S WASHINGTON AVENUE, INDEPENDENCE, MISSOURI



CONTACT

John Faur, CCIM

Associate Director

t 816-268-4243

jfaur@nzimmer.com

nmrkzimmer.com

Richard H. Chamberlain, SIOR, LEED AP

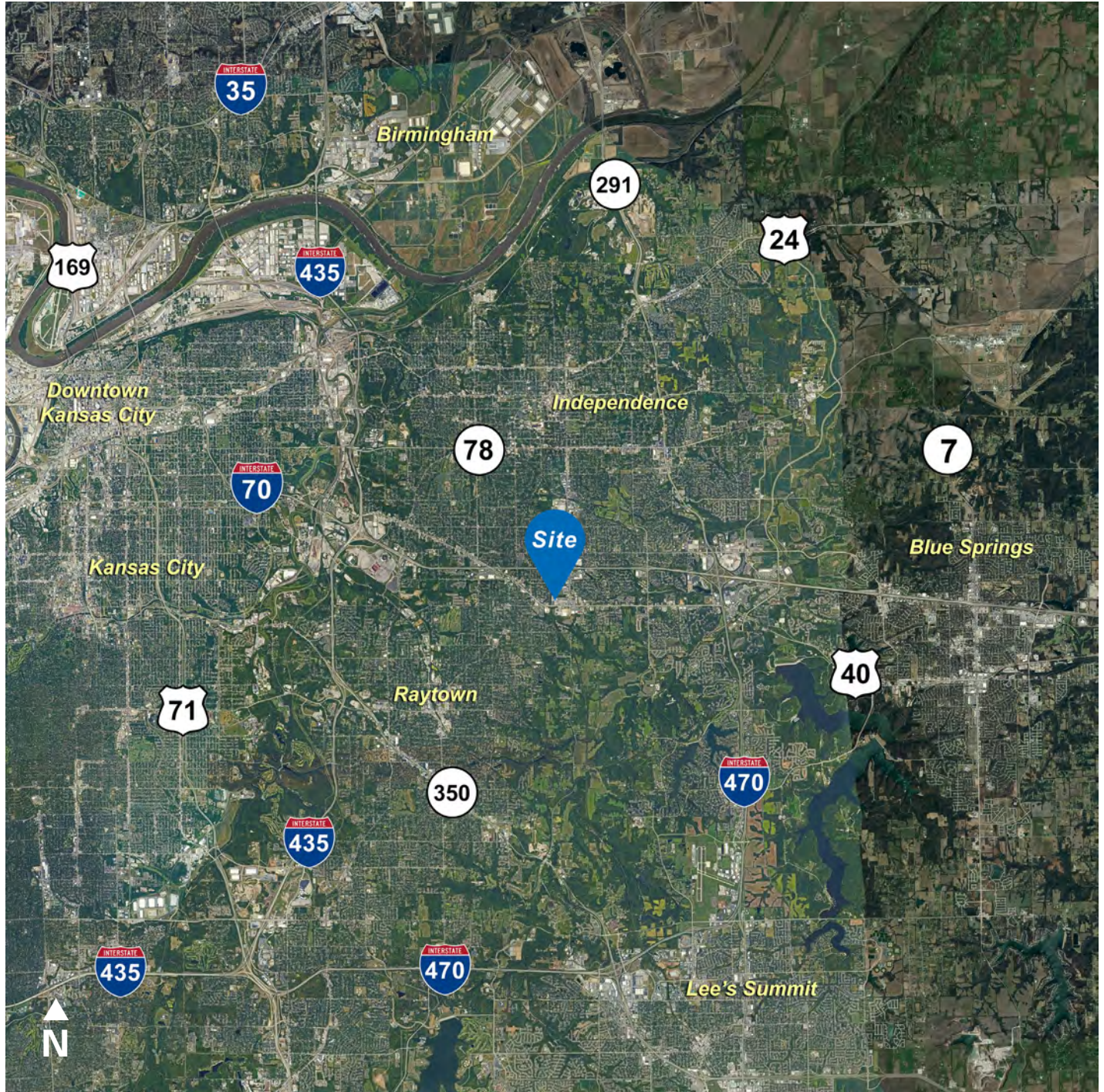
Managing Director, Principal

t 816-268-4222

rchamberlain@nzimmer.com

NEWMARK
ZIMMER

4323 S WASHINGTON AVENUE, INDEPENDENCE, MISSOURI



CONTACT

John Faur, CCIM

Associate Director

t 816-268-4243

jfaur@nzimmer.com

nmrkzimmer.com

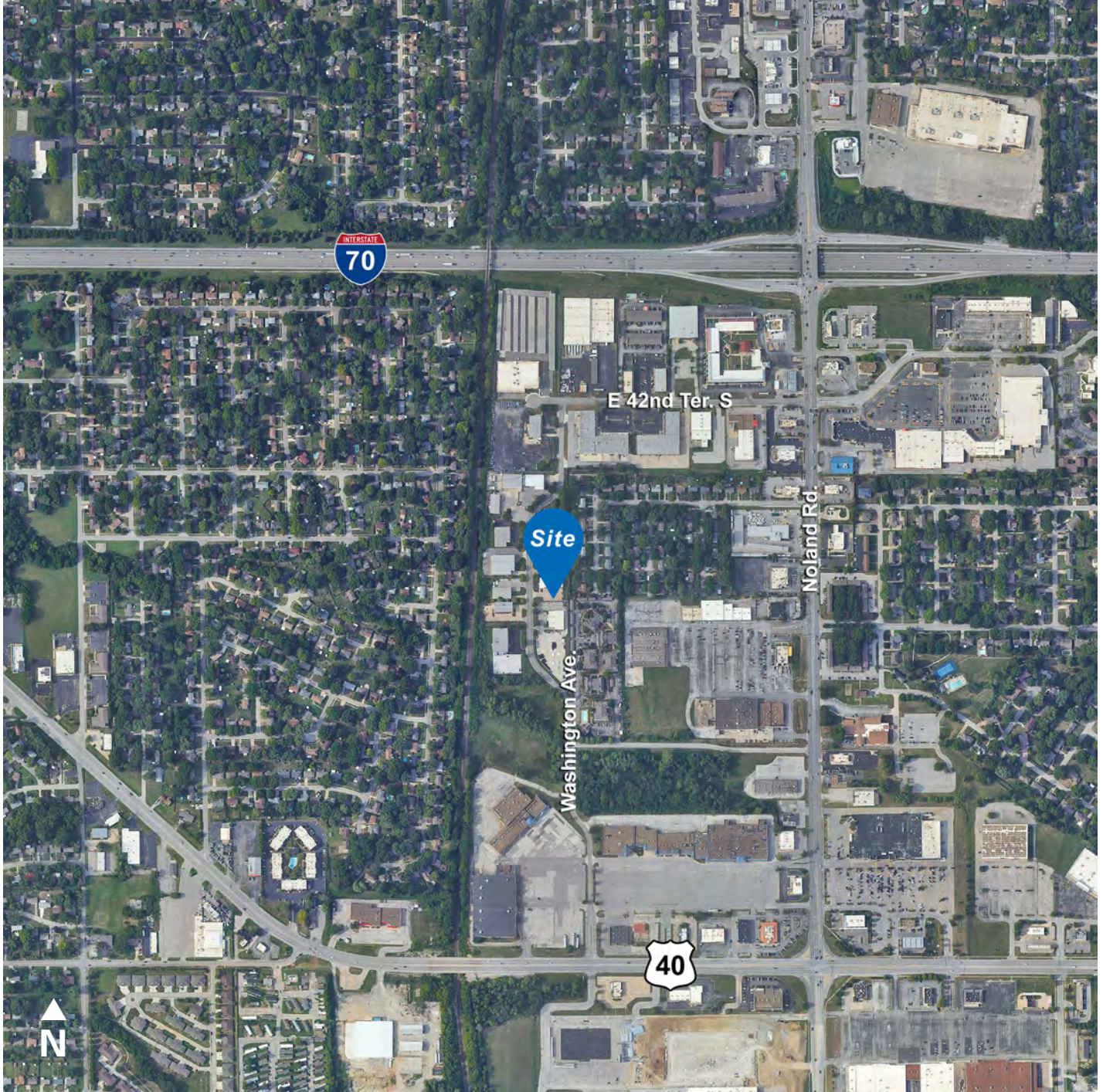
Richard H. Chamberlain, SIOR, LEED AP

Managing Director, Principal

t 816-268-4222

rchamberlain@nzimmer.com

4323 S WASHINGTON AVENUE, INDEPENDENCE, MISSOURI



CONTACT

John Faur, CCIM

Associate Director

t 816-268-4243

jfaur@nzimmer.com

nmrkzimmer.com

Richard H. Chamberlain, SIOR, LEED AP

Managing Director, Principal

t 816-268-4222

rchamberlain@nzimmer.com

NEWMARK
ZIMMER