



# FOR LEASE

375 NW Gilman Boulevard  
Issaquah, WA



## VILLAGE WEST

Kyle Nordby

First Western Properties, Inc. | 425.822.5522  
11621 97th Lane NE, Kirkland, WA 98034 | fwp-inc.com



# SUMMARY



## AVAILABLE:

- **BUILDING A**
  - First Floor Retail A-201: 1,153 SF±
  - Rental Rate: \$25.00 PSF, NNN
- **BUILDING B**
  - First Floor Retail B-101: 1,061 SF
  - Rental Rate: \$36.00 PSF, NNN
  - Second Floor Office B-201 1,067 SF
  - Rental Rate: \$25.00 PSF, NNN
- **BUILDING C**
  - Second Floor Office C-201: 833 SF
  - Rental Rate: \$25.00 PSF, NNN
- NNN: \$13.75 PSF
- Next door to Gilman Village & St. George's Square
- Plentiful pull-up parking
- Full vehicle access from Gilman Blvd.
- Traffic count at intersection: 26,451 ADT
- Site is located 8 miles from downtown Bellevue and 17 miles from downtown Seattle
- Issaquah is home to Costco's International HQ and 40% of the states population in a 40 mile radius



Population



Average HH Income



Daytime Population

Regis - 2025

	Population	Average HH Income	Daytime Population
Mile 1	9,635	\$209,593	11,893
Mile 3	56,486	\$248,486	20,354
Mile 5	111,824	\$269,663	30,153



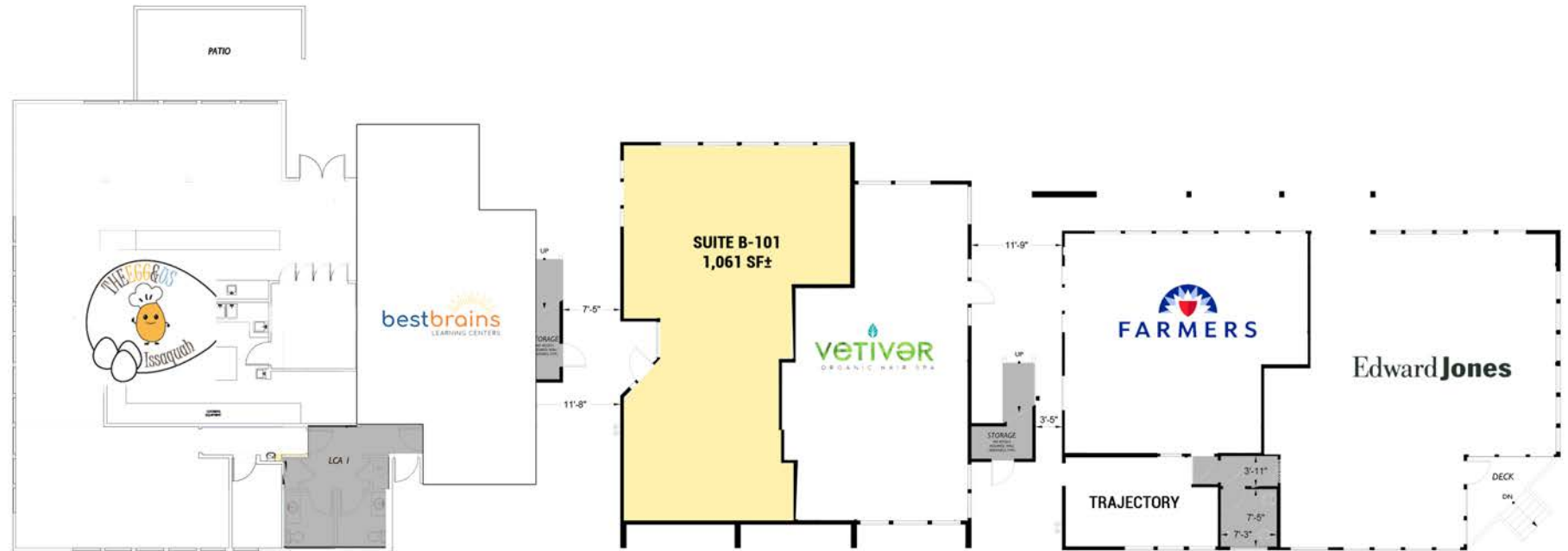


AERIAL

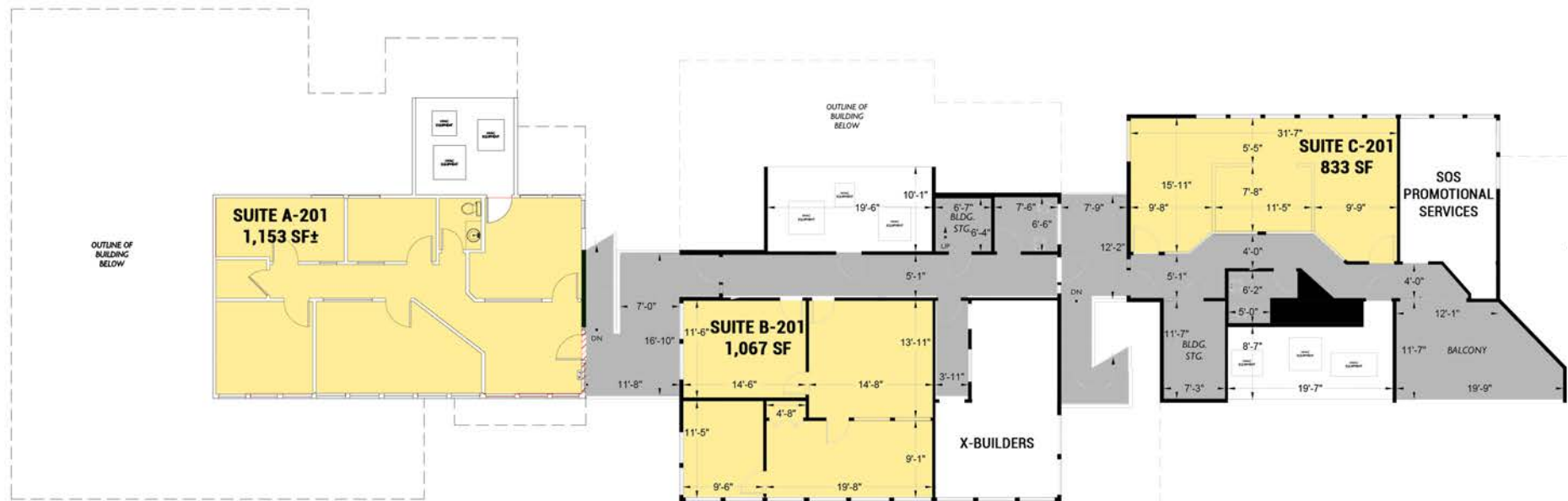




## FIRST FLOOR LAYOUT



## SECOND FLOOR LAYOUT





KIRKLAND | TACOMA | PORTLAND | SEATTLE

# RELATIONSHIP FOCUSED. RESULTS DRIVEN.

KYLE NORDBY

📞 425.890.8722

✉️ [kyle@fwp-inc.com](mailto:kyle@fwp-inc.com)



First Western Properties, Inc. | 425.822.5522  
11621 97th Lane NE, Kirkland, WA 98034 | [fwp-inc.com](http://fwp-inc.com)

© First Western Properties, Inc. DISCLAIMER: The above information has been secured from sources believed to be reliable, however, no representations are made to its accuracy. Prospective tenants or buyers should consult their professional advisors and conduct their own independent investigation. Properties are subject to change in price and/or availability without notice.