



\$25.00

PSF NNN

+ \$9.95 CAM
Electricity & Janitorial

3355 Burns Road, Suite 105
Palm Beach Gardens, FL 33410

Prime Medical Office Condo for Lease

Ideal Location Across from Palm Beach Gardens
Medical Center

- Established Medical Corridor: Situated in the highly desirable Gardens Medical Park.
- Convenient Access: Easy connectivity to I-95, Florida's Turnpike, and major highways.
- Vibrant Surroundings: Minutes from Downtown Gardens, The Gardens Mall, and top local dining and retail.



Highway
Accessibility



Abundant
Parking

Robert Dabrowski

Senior Associate
+1 561 722 8477
robert.dabrowski@colliers.com

Michael Falk, CCIM, SIOR

Executive Vice President
+1 561 662 2624
michael.falk@colliers.com

Colliers

901 Northpoint Parkway, Suite 109
West Palm Beach, FL 33407
+1 561 478 6400



Salient Facts

Parcel Control Number
52-43-42-07-24-000-1050

Size
2,508 SF

Zoning
Professional Office

Property Subtype
Office Medical

Building Class
B

Construction
Reinforced Concrete

RBA
34,434 SF

Stories
3

Typical Floor
11,478 SF

Parking
12 Surface Spaces
95 Total Spaces (6 Handicap)

Year Built
1985

colliers.com

Opportunity

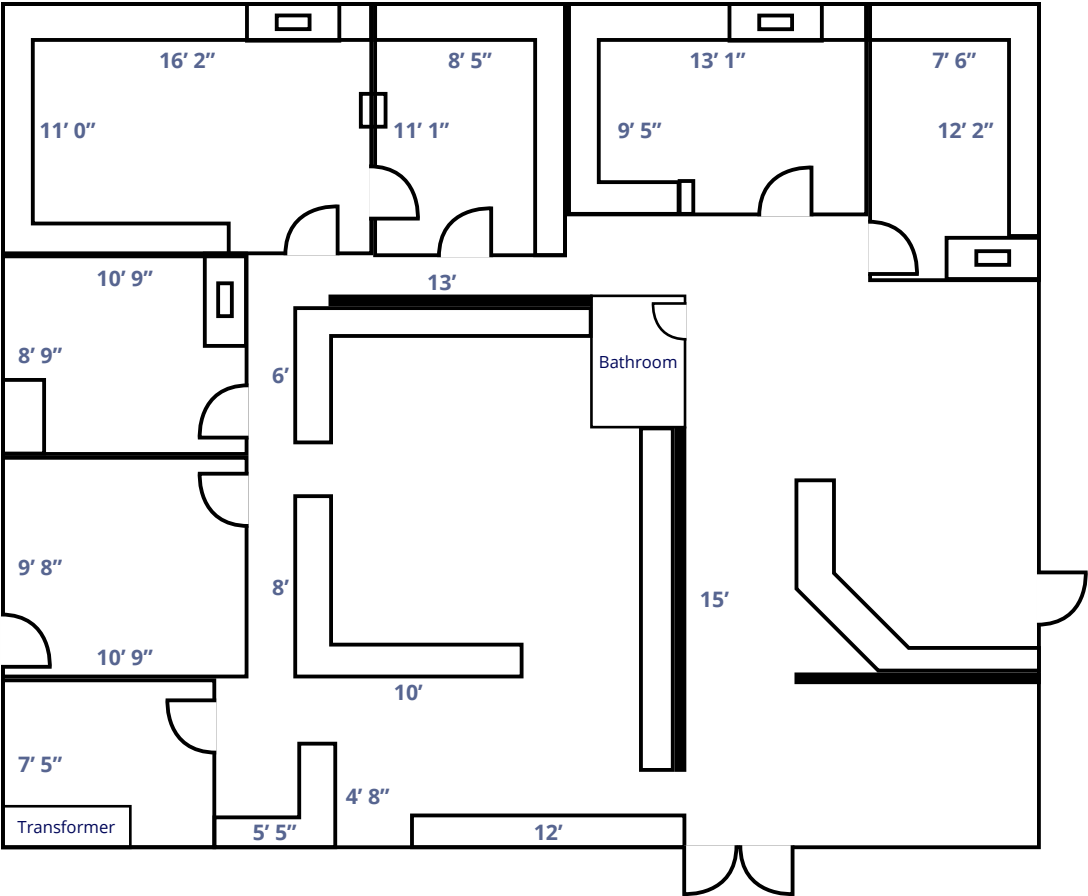
Unit 105 at 3355 Burns Road in Palm Beach Gardens presents a unique opportunity to lease a move-in ready medical/office condo in the desirable Gardens Medical Park. Situated directly across from the Palm Beach Gardens Medical Center, this well-maintained first-floor unit is centrally located in Palm Beach Gardens. With convenient access to I-95, the Florida Turnpike, Downtown Gardens, The Gardens Mall, and local beaches, this location offers excellent accessibility for medical and office use.



The Location

Palm Beach Gardens, located in Palm Beach County, Florida, is a vibrant city known for its lush landscapes, upscale amenities, and strong community atmosphere. Founded in 1959, the city offers a variety of recreational options, including parks, golf courses, and cultural venues. The Downtown at the Gardens area provides shopping, dining, and entertainment, while nearby beaches offer relaxation and water activities. With top-rated schools, healthcare facilities, and convenient access to major highways, Palm Beach Gardens is a desirable location for both residents and businesses.

Floor Plan



Suite 105
2,508 SF available

Demographics



Current
population 2024

11,030



Projected
population 2029

12,292



Median household
income 2024

\$85,125



Median household
income 2029

\$103,215



Colliers

Downtown at the Gardens



The Gardens Mall

Legacy Place



Prosperity Centre



Palm Beach Gardens Medical Center

3355 Burns Road, Suite 105, Palm Beach Gardens, FL 33410

Robert Dabrowski

Senior Associate
+1 561 722 8477
robert.dabrowski@colliers.com

Michael Falk, CCIM, SIOR

Executive Vice President
+1 561 662 2624
michael.falk@colliers.com

This document has been prepared by Colliers for advertising and general information only. Colliers makes no guarantees, representations or warranties of any kind, expressed or implied, regarding the information including, but not limited to, warranties of content, accuracy and reliability. Any interested party should undertake their own inquiries as to the accuracy of the information. Colliers excludes unequivocally all inferred or implied terms, conditions and warranties arising out of this document and excludes all liability for loss and damages arising there from. This publication is the copyrighted property of Colliers and/or its licensor(s). Copyright © 2025. All rights reserved. This communication is not intended to cause or induce breach of an existing listing agreement. Colliers International Florida, LLC.