

# 6251 Florin Perkins Road

Sacramento, CA 95828

±57,000 SF High Visibility Industrial Building | Power Inn Industrial Submarket



## Contact Us

**Zac Sweet** SIOR

Senior Vice President  
+1 916 717 4768  
zac.sweet@cbre.com  
Lic. 01352800

**Jeff Kvarme**

First Vice President  
+1 916 203 5257  
jeff.kvarme@cbre.com  
Lic. 01924968

**Tyler Howell**

Senior Associate  
+1 916 781 4835  
tyler.howell1@cbre.com  
Lic. 02100245

**Courtney Lee**

Associate  
+1 916 906 5544  
courtney.lee@cbre.com  
Lic. 02031694

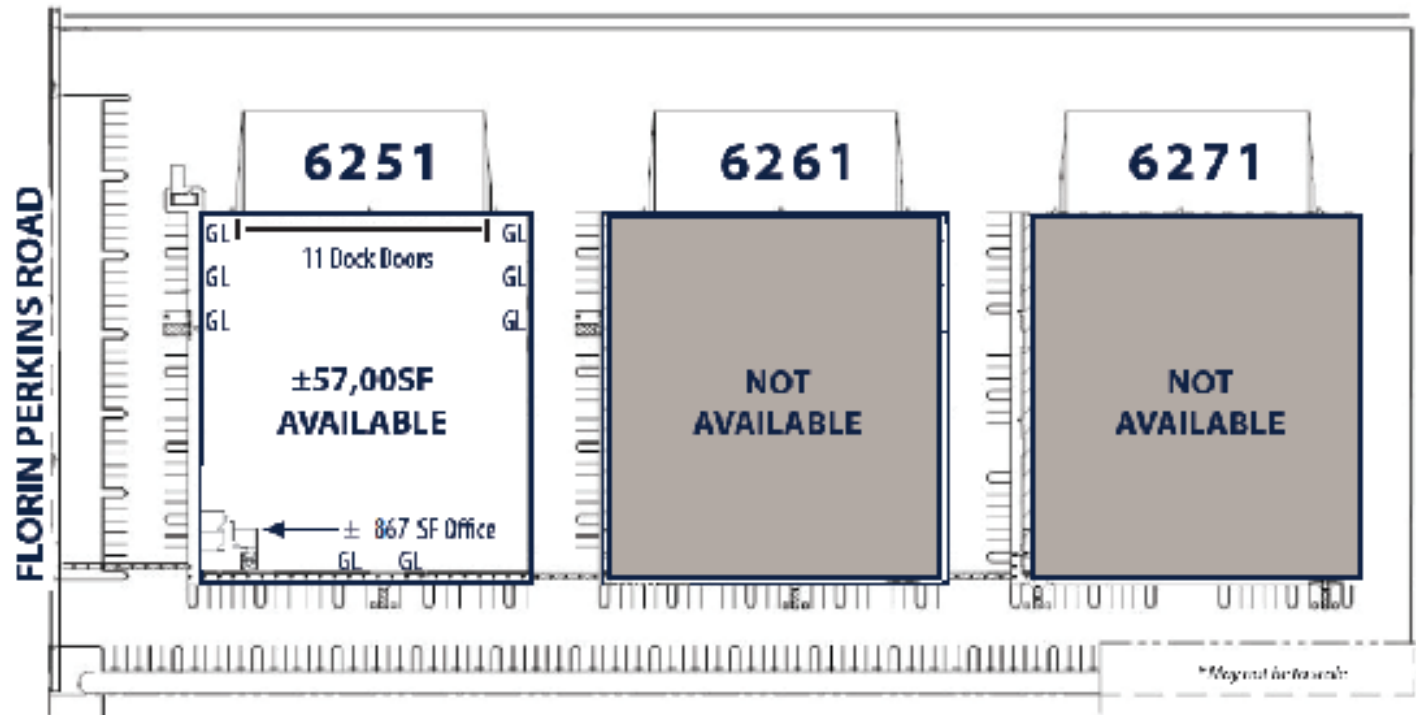
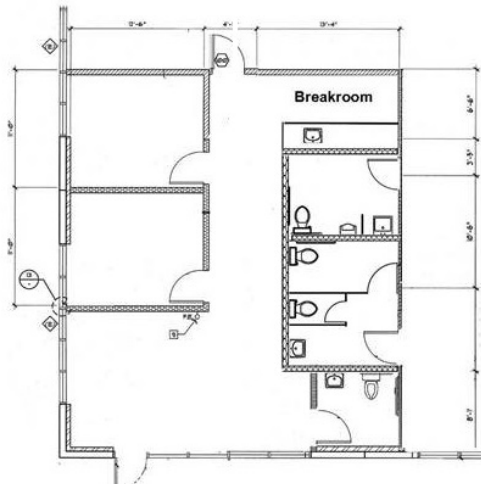


## Property Information & Site Plan

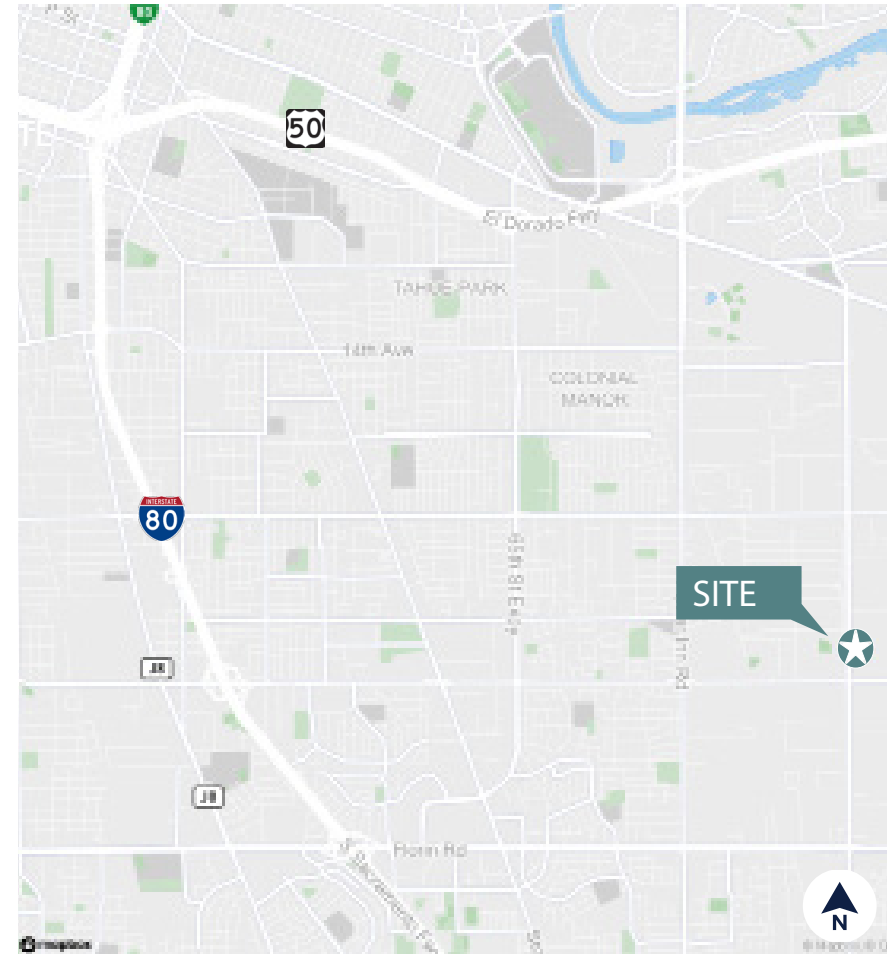
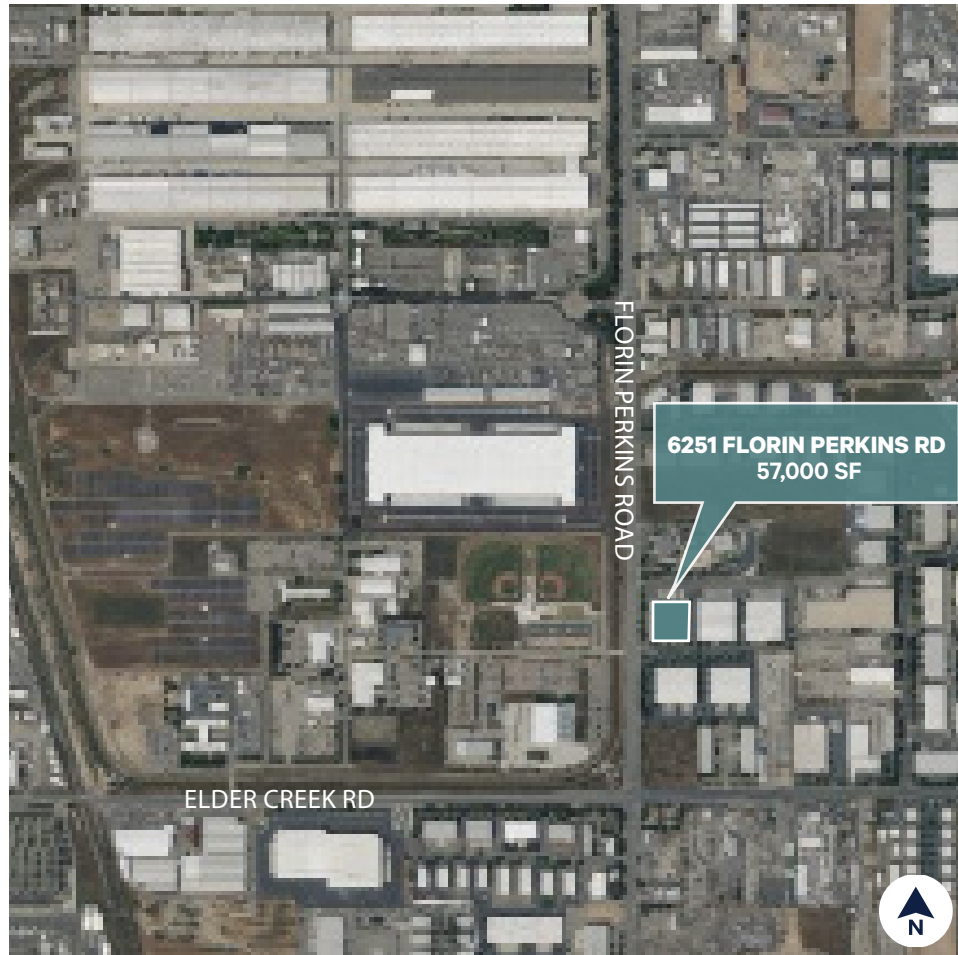
- BUILDING SF:  $\pm 57,000$
- OFFICE SF:  $\pm 867$
- CLEAR HEIGHT: 32'
- COLUMN SPACING: 57' x 50'
- DOCK HIGH DOORS: 11 - 9' X 10'
- GRADE LEVEL DOORS: 8 - 10' X 12'
- SPRINKLERS: ESFR
- ELECTRICAL: 1200 AMP 277/480V\*

\*tenant to independently verify prior to entering binding agreement

### OFFICE LAYOUT



## Area Map & Aerial



© 2023 CBRE, Inc. All rights reserved. This information has been obtained from sources believed reliable but has not been verified for accuracy or completeness. CBRE, Inc. makes no guarantee, representation or warranty and accepts no responsibility or liability as to the accuracy, completeness, or reliability of the information contained herein. You should conduct a careful, independent investigation of the property and verify all information. Any reliance on this information is solely at your own risk. CBRE and the CBRE logo are service marks of CBRE, Inc. All other marks displayed on this document are the property of their respective owners, and the use of such marks does not imply any affiliation with or endorsement of CBRE. Photos herein are the property of their respective owners. Use of these images without the express written consent of the owner is prohibited.