

# MID WESTCHESTER EXECUTIVE PARK

16 Skyline Drive, Hawthorne, NY

**AVAILABLE Q2 2025**



**NEW BUILDING FOR LEASE**

- TOTAL SF:** 36,360 RSF  
**WAREHOUSE:** 32,724 RSF  
**OFFICE:** 3,636 RSF  
**LOADING DOCKS:** 2  
**CEILING HEIGHT:** 28' Clear  
**MISC:** Sprinklers, gas, and separate meters  
**TRANSPORTATION:** Easy access to NYST— I-87, Cross Westchester Expressway— I-287, Saw Mill River & Sprain Parkways, Rte 9A and Bus  
**NEIGHBORHOOD:** In the heart of Westchester's knowledge center, adjacent to bustling life sciences community, The New York Medical College Campus, numerous corporate neighbors and local services.  
Also convenient to hotels, restaurants, local shopping.

## CONTACT EXCLUSIVE LISTING AGENTS:

**WILLIAM ANSON** 914.968.8500 X 329 [WANSON@RMFRIEDLAND.COM](mailto:WANSON@RMFRIEDLAND.COM)  
**KEVIN LANGTRY** 914.968.8500 X 322 [KLANGTRY@RMFRIEDLAND.COM](mailto:KLANGTRY@RMFRIEDLAND.COM)

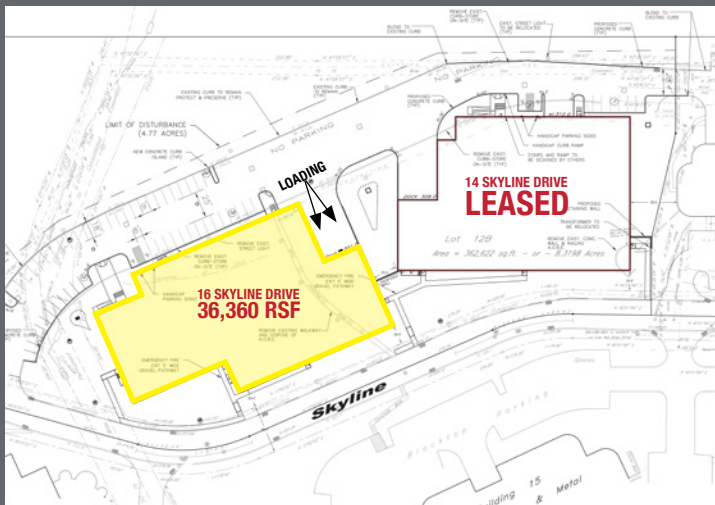
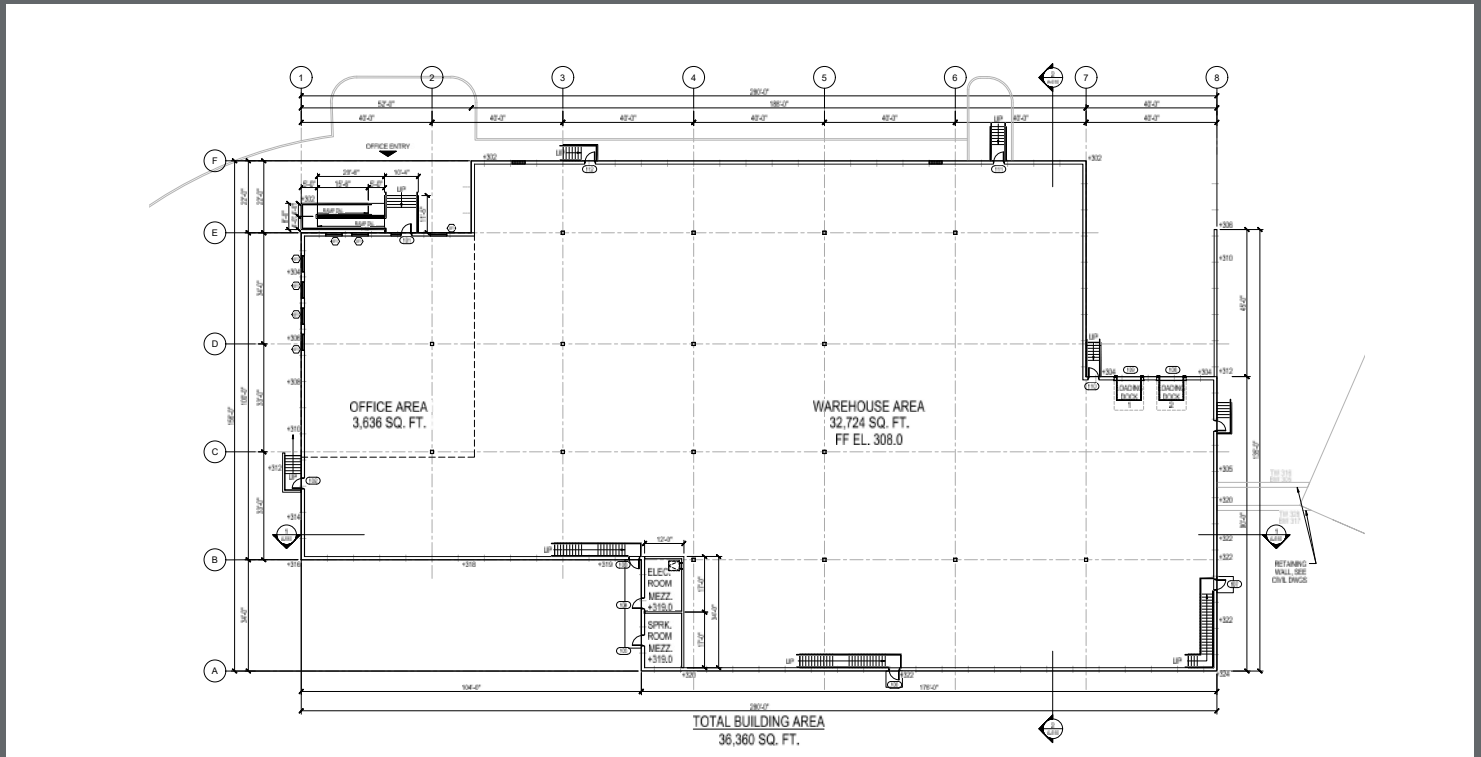
**RM FRIEDLAND**

COMMERCIAL REAL ESTATE SERVICES

440 Mamaroneck Ave | Harrison, NY 10528 | [rmfriedland.com](http://rmfriedland.com) |

# MID WESTCHESTER EXECUTIVE PARK

## 16 Skyline Drive, Hawthorne, NY



CONTACT EXCLUSIVE LISTING AGENTS:

WILLIAM ANSON

914.968.8500 X 329

WANSON@RMFRIEDLAND.COM

KEVIN LANGTRY

914.968.8500 X 322

KLANGTRY@RMFRIEDLAND.COM

**RM FRIEDLAND**

COMMERCIAL REAL ESTATE SERVICES

440 Mamaroneck Ave | Harrison, NY 10528 | [rmfriedland.com](http://rmfriedland.com)

All information contained herein is based upon information which we consider reliable, but because it has been supplied by third parties, we cannot represent that it is accurate or complete, and it should not be relied upon as such. The offerings are subject to errors, omissions, changes, including price, or withdrawal without notice. The content is provided without warranties of any kind, either express or implied. RM Friedland, LLC, its agents or employees shall not be held liable to anyone for any errors, omissions or inaccuracies under any circumstances. You and your advisors should conduct a careful, independent examination of the property to determine to your satisfaction the suitability of the

# MID WESTCHESTER EXECUTIVE PARK

16 Skyline Drive, Hawthorne, NY



## IN THE HEART OF WESTCHESTER'S KNOWLEDGE CENTER

**12 SKYLINE**  
**CLARAPATH**  
 AUTOMATING PATHOLOGY  
 Corporate Headquarters;  
 A medical robotics platform  
 reshaping medicine

**8 SKYLINE**  
**pti**  
 Global Leaders in Package  
 Testing Equipment

**MTA Metro-North  
 Railroad**

**WMC Health Westchester  
 Medical Center**  
 Westchester Medical Center Health Network

**NEW YORK MEDICAL COLLEGE**  
 A MEMBER OF THE YONGE COLLEGE AND UNIVERSITY SYSTEM  
 SCHOOL OF HEALTH SCIENCES & PRACTICE - INSTITUTE OF PUBLIC HEALTH

**RETIA** **sapience  
 therapeutics**

**SHY** **Biolnc**

\*Biolnc is the only biotechnology incubator sited on a Health Sciences College Campus in the Mid-Hudson Valley.

**Transportation**

**the bee-line system**

All information contained herein is based upon information which we consider reliable, but because it has been supplied by third parties, we cannot represent that it is accurate or complete, and it should not be relied upon as such. The offerings are subject to errors, omissions, changes, including price, or withdrawal without notice. The content is provided without warranties of any kind, either express or implied. RM Friedland, LLC, its agents or employees shall not be held liable to anyone for any errors, omissions or inaccuracies under any circumstances. You and your advisors should conduct a careful, independent examination of the property to determine to your satisfaction the suitability of the