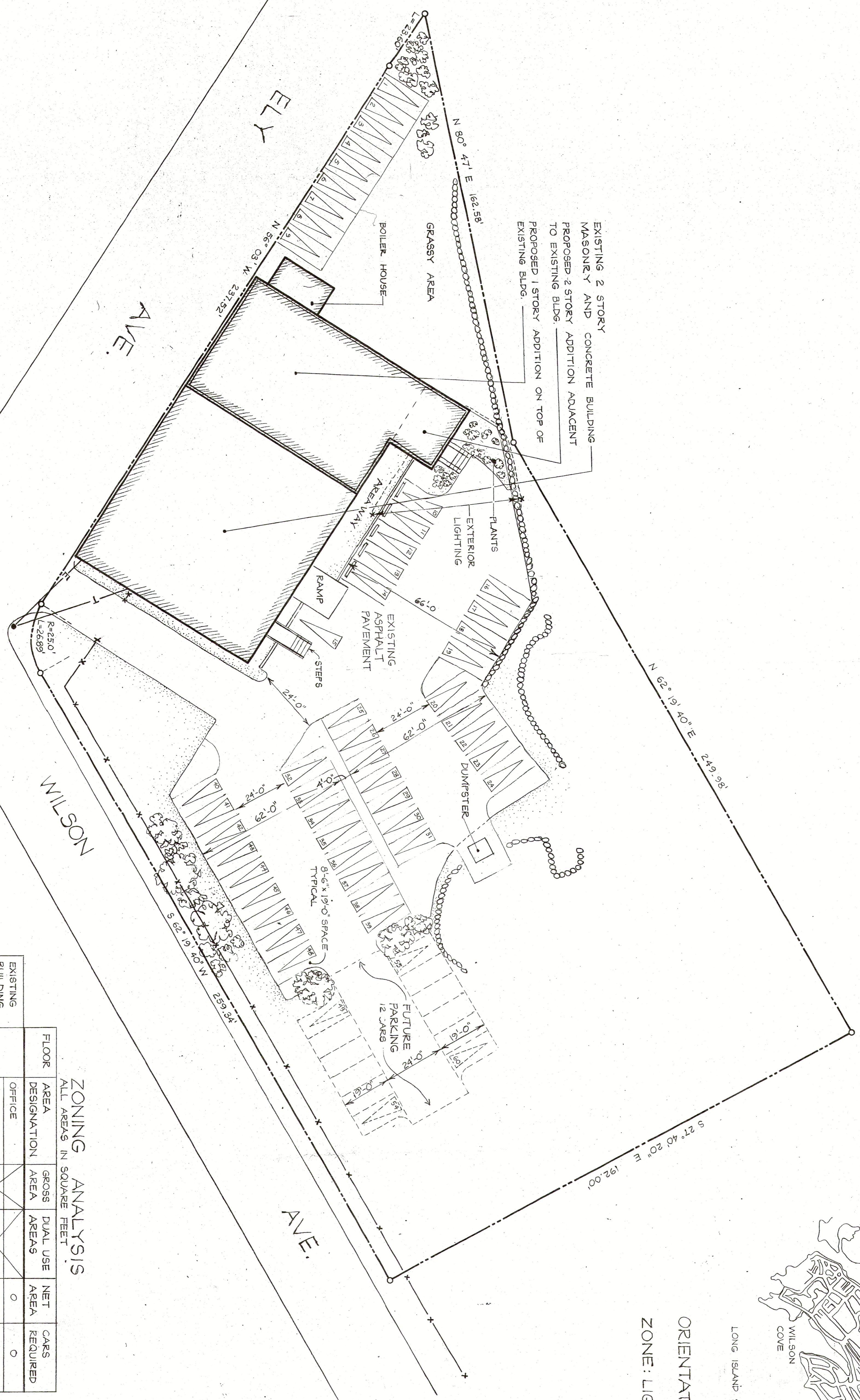
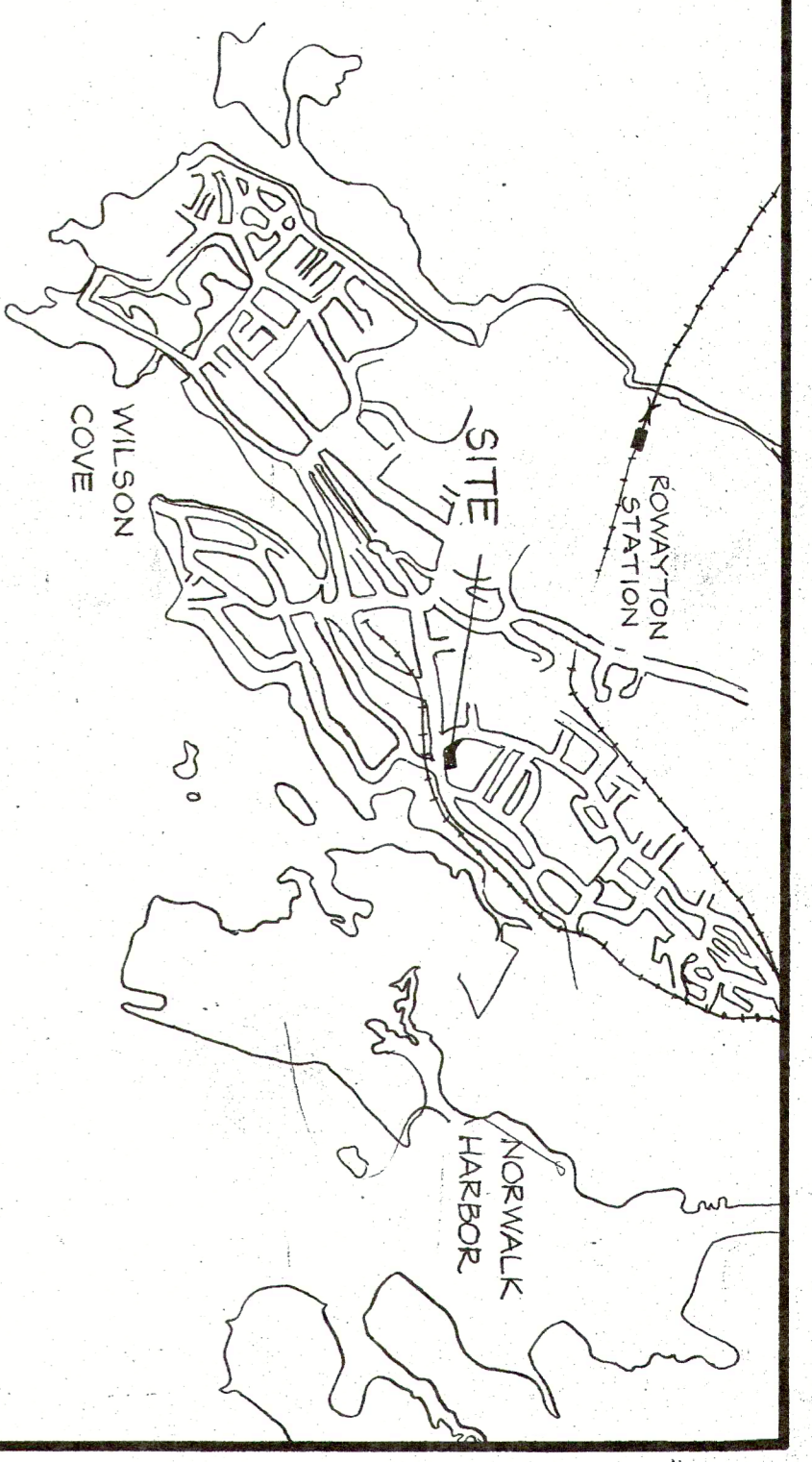


Parsons, Bromfield and Redniss
 ENGINEERS • PLANNERS • SURVEYORS • ENVIRONMENTAL CONSULTANTS
 22 FIRST STREET • STAMFORD, CONNECTICUT 06905 • Tel. (203) 327-0500



SITE PLAN
1.512 Ac.

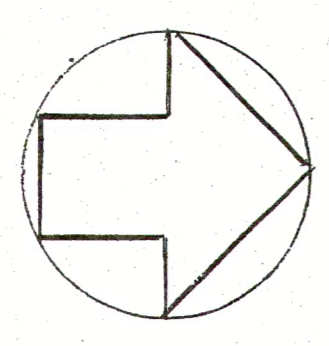
ORIENTATION MAP
 ZONE: LIGHT INDUSTRIAL



ZONING ANALYSIS
 ALL AREAS IN SQUARE FEET

FLOOR	AREA DESIGNATION	GROSS AREA	DUAL USE AREAS	NET AREA	CARS REQUIRED
1	OFFICE			0	0
	WAREHOUSE			2831	57 = 6
	MANUFACTURE			5339	178 = 18
TOTAL		8726	556	8170	8.5 = 9
2	OFFICE			2555	
	WAREHOUSE			2979	6
	MANUFACTURE			2374	7.9 = 8
TOTAL		8726	818	7908	

PROPOSED ADDITION	OFFICES/LABS	1835	3670	12.2 = 13
3	4131	461	3670	12.2 = 13
SUM TOTALS	21583	1835	19748	60



S-1

COMM. NO.	2069-A
drawn by	L.D.
checked by	
dated	
SCALE	1" = 20'-0"