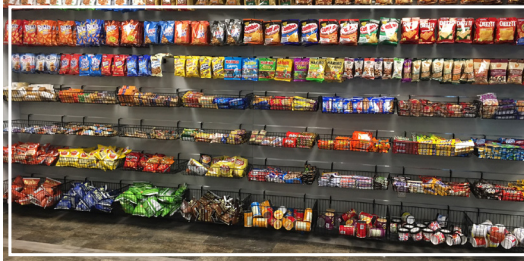


# STONERIDGE I

41000 WOODWARD AVENUE, BLOOMFIELD HILLS



## PREMISES

- Three-story, 150,000 SF office building with two connected wings
- 41000 & 41100 Woodward Avenue

## AVAILABILITY

- 2nd Floor (Suites from 4,729 SF up to 18,010 SF)
- 3rd Floor (Suites from 2,727 SF up to 3,453 SF)

## RENTAL RATE

- \$19.95 psf
- 2024 Base Year, plus electricity

## FEATURES AND AMENITIES

- **PROMINENT BUILDING SIGNAGE AVAILABLE**
- Fully-equipped fitness center with Peloton bikes
- NEW OPERATOR SOON: Micro-market, grab n' go food service.
- Magnificent wooded setting in the heart of Bloomfield Hills
- Inviting three-story rotunda lobbies and recently renovated common areas and restrooms
- Convenient points of entry, including walk-out access on both first and second floors
- Well-lit parking with adjacent 2-level covered parking deck
- Computerized security/entry access
- Convenient I-75 access less than a mile away
- Nearby hotels and fine restaurants

## FOR MORE INFORMATION

Daniel Canvasser  
Jack Bergmann  
Wade Lorimer  
Newmark | nmrk.com  
248.350.9500

Dan Leppink  
Kojaian Management Corporation  
dleppink@kojaian.com  
248.644.7600

**NEWMARK**

MORE THAN  
**BUILDINGS**

LOCATION | BUSINESS | IMAGE | SUCCESS

**KOJAIANO**  
KOJAIAN.COM

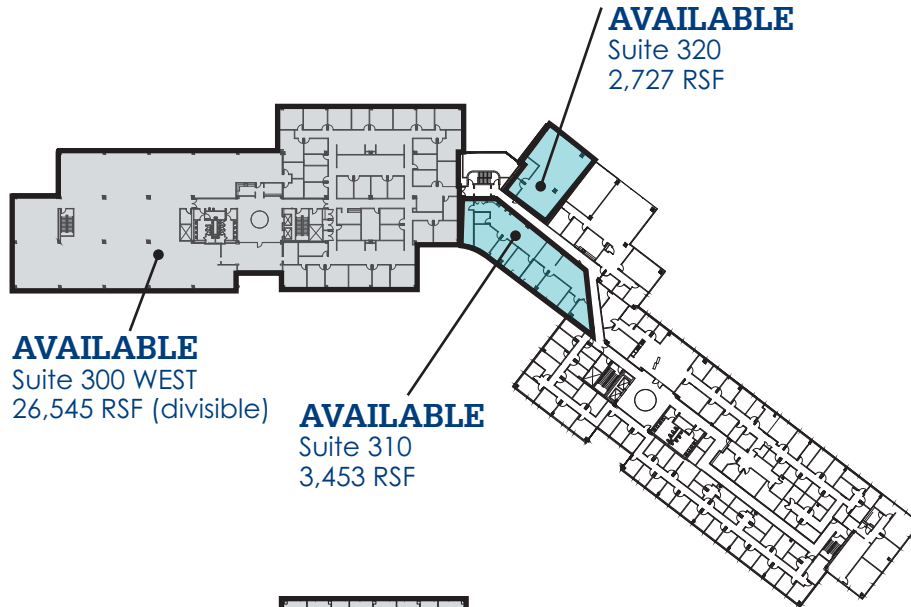
# STONERIDGE I

41000 WOODWARD AVENUE, BLOOMFIELD HILLS

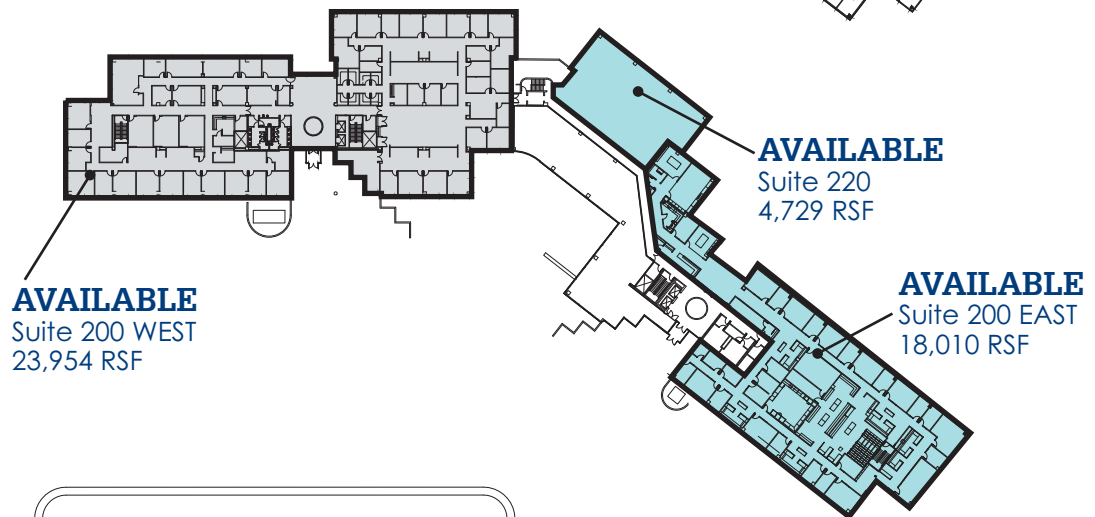
 41000 WOODWARD AVENUE -AVAILABILITY

 41100 WOODWARD AVENUE -AVAILABILITY

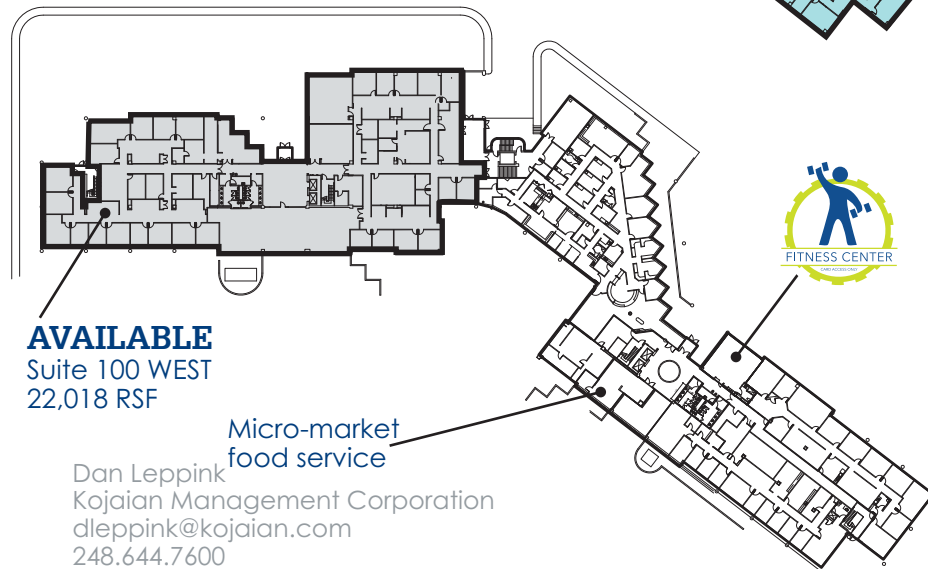
## THIRD FLOOR



## SECOND FLOOR



## GROUND FLOOR



### FOR MORE INFORMATION

Daniel Canvasser  
Jack Bergmann  
Wade Lorimer  
Newmark | nmrk.com  
248.350.9500

Dan Leppink  
Kojaian Management Corporation  
dleppink@kojaian.com  
248.644.7600