

40501 PRODUCTION DRIVE
HARRISON TWP., MICHIGAN

INDUSTRIAL FOR SALE
54,140 Square Feet Available



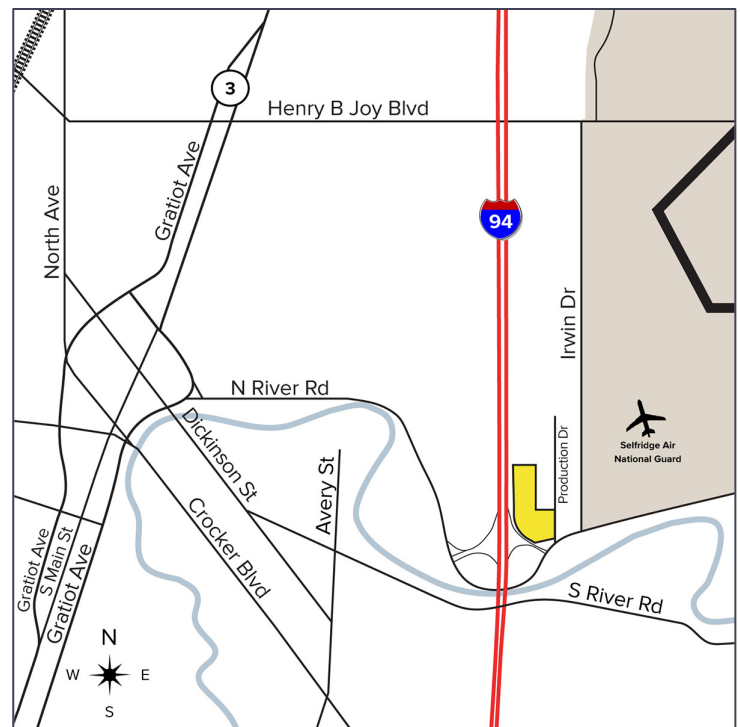
**SIGNATURE
ASSOCIATES**
KNOW SIGNATURE | KNOW RESULTS

REDEVELOPMENT OPPORTUNITY!



PROPERTY FEATURES

- 54,140 square feet available
- Situated on 13.5 acres
- Zoned Industrial
- Newly paved parking lot
- Completely remodeled interior & exterior
- Main road and freeway exposure with easy access to I-94
- Currently a sports and entertainment center
- Includes: bowling alley, softball diamonds, racquet/handball/wallyball courts, axe throwing, arcades, darts/billiards, cornhole, pins & skins, and short court basketball
- Full commercial kitchen & bar
- Sale Price: \$7,950,000 (\$146.84/sq.ft.)



For more information, please contact:

CHRIS MONSOUR
(248) 948 0107
cmonsour@signatureassociates.com

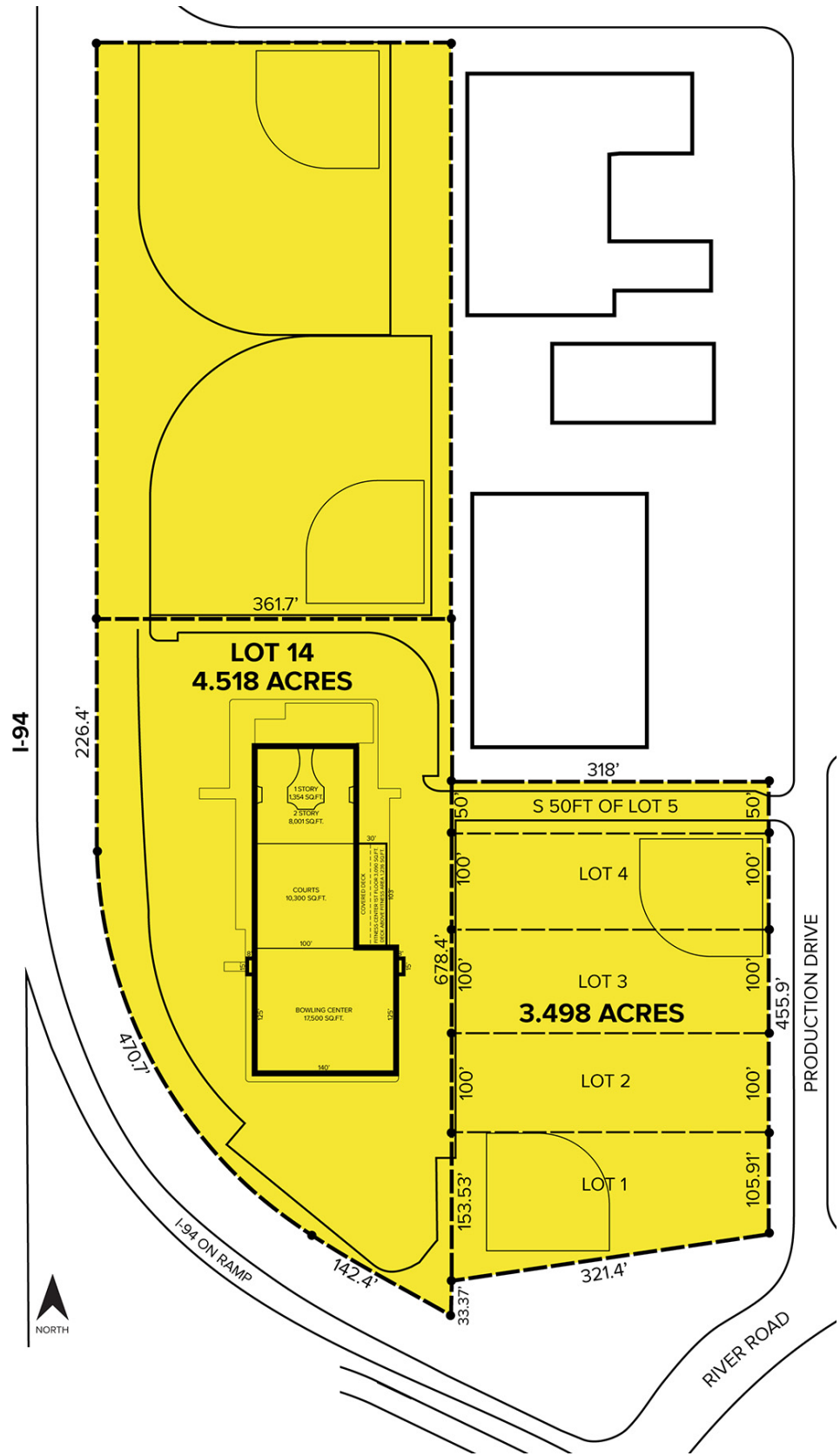
SIGNATURE ASSOCIATES
One Towne Square, Suite 1200
Southfield, MI 48076
www.signatureassociates.com

40501 Production Drive – Harrison Twp., Michigan

Industrial For Sale

54,140
Square Feet
AVAILABLE

Site Plan



For more information, please contact:

CHRIS MONSOUR
(248) 948 0107
cmonsour@signatureassociates.com

SIGNATURE ASSOCIATES
One Towne Square, Suite 1200
Southfield, MI 48076
www.signatureassociates.com

40501 Production Drive – Harrison Twp., Michigan

Industrial For Sale

54,140
Square Feet
AVAILABLE

Aerial



For more information, please contact:

CHRIS MONSOUR
(248) 948 0107
cmonsour@signatureassociates.com

SIGNATURE ASSOCIATES
One Towne Square, Suite 1200
Southfield, MI 48076
www.signatureassociates.com

Information is subject to verification and no liability for errors or omissions is assumed. Price is subject to change and listing withdrawal.