

INDUSTRIAL BUILDING FOR SALE

2221 APOPKA BLVD
APOPKA, FL 32703

3,595 SF



PROPERTY SUMMARY

PROPERTY DETAILS

TOTAL PROPERTY	
TOTAL SQUARE FEET:	3,595 SF
PROPERTY SIZE:	.85 AC
ZONING:	IND-2/IND-3
PARKING:	On-Site Fenced
PRICE:	Call for Price

Hard to find Industrial property with excellent location. 2221 Apopka Blvd is centrally located and offers considerable benefits for businesses seeking to service the greater Orlando area. The property has a functional layout with a small separate office building in front and warehouse with covered storage in the back. The property also features fenced and secured outside storage space which provides businesses benefits for truck and equipment storage.

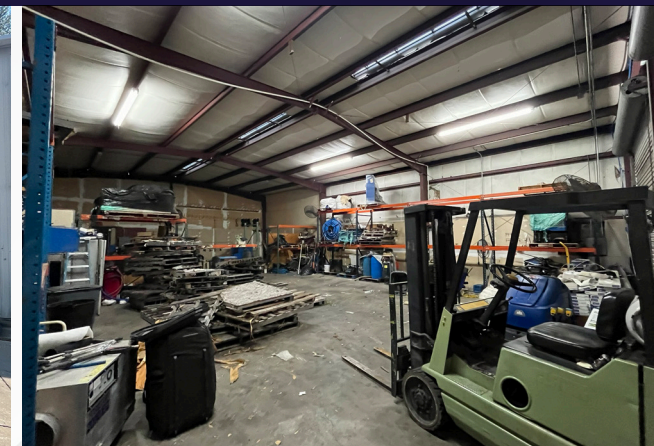
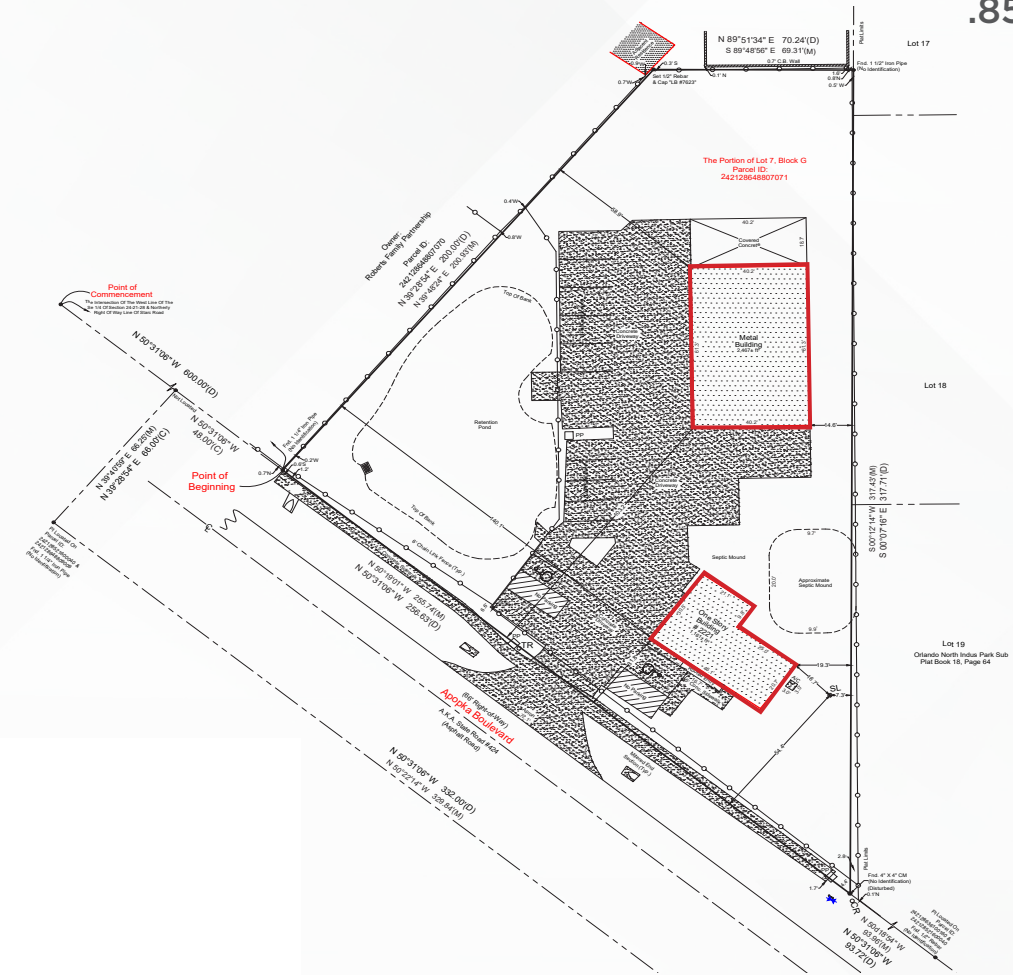
OFFICE BUILDING	
TOTAL SQUARE FEET:	1,155 SF
YEAR BUILT:	1964
CONSTRUCTION TYPE:	Concrete Block
PRIVATE OFFICES:	2
RESTROOMS:	1

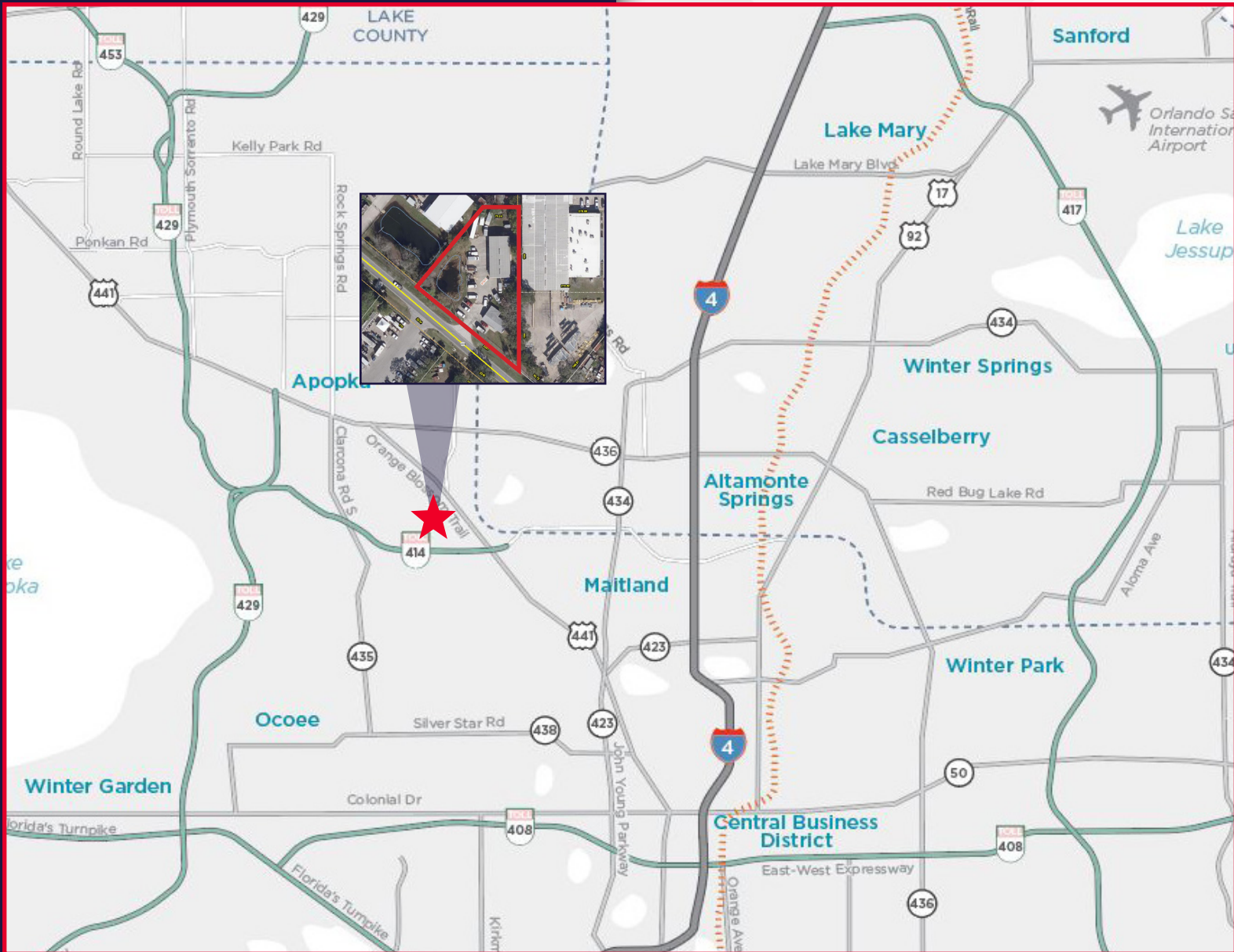
WAREHOUSE BUILDING	
TOTAL SQUARE FEET:	2,440 SF
COVERED AREA:	760 SF
YEAR BUILT:	1995
CONSTRUCTION TYPE:	Metal
DOOR SIZES:	2 - 12'x12'
LOADING TYPE:	Grade Level
CLEAR HEIGHT:	17' to peak
POWER:	3 Phase
RESTROOMS:	1

PROPERTY SITE PLAN

PROPERTY SIZE

.85 ACRES





CONTACT INFORMATION

Sam King

Senior Associate
Sales & Acquisitions | Central FL
Direct: +1 407 949 0898
Cell: +1 407 341 7728
sam.j.king@cushwake.com

Glen Jaffee

Senior Director
Sales & Acquisitions | Central FL
Direct: +1 407 541 4408
Cell: +1 407 353-3426
glen.jaffee@cushwake.com



©2024 Cushman & Wakefield. All rights reserved. The information contained in this communication is strictly confidential. This information has been obtained from sources believed to be reliable but has not been verified. NO WARRANTY OR REPRESENTATION, EXPRESS OR IMPLIED, IS MADE AS TO THE CONDITION OF THE PROPERTY (OR PROPERTIES) REFERENCED HEREIN OR AS TO THE ACCURACY OR COMPLETENESS OF THE INFORMATION CONTAINED HEREIN, AND SAME IS SUBMITTED SUBJECT TO ERRORS, OMISSIONS, CHANGE OF PRICE, RENTAL OR OTHER CONDITIONS, WITHDRAWAL WITHOUT NOTICE, AND TO ANY SPECIAL LISTING CONDITIONS IMPOSED BY THE PROPERTY OWNER(S). ANY PROJECTIONS, OPINIONS OR ESTIMATES ARE SUBJECT TO UNCERTAINTY AND DO NOT SIGNIFY CURRENT OR FUTURE PROPERTY PERFORMANCE.