

1324-1328 SW Market Street

Less's Summit, Missouri 64081

For Lease



Excellent Location!

- \pm 5,850 SF Industrial/Flex Building on \pm 0.85 Acres
- Available For Occupancy Q1 2026
- Two Drive-In Loading Doors
- Only Building Along SW Market St. With Cut-Through Access to SW Jefferson Street
- Call For Lease Rate

For more information:

Christian Wead
816.412.8472
cwead@blockllc.com

The information contained in this marketing flyer is presented as general information only. Block Real Estate Services, LLC makes no representation as to its accuracy. This information is not intended as legal, financial or real estate advice and must not be relied upon as such. You should make your own inquiries, obtain independent inspections, and seek professional advice tailored to your specific circumstances before making any legal, financial or real estate decisions.

Building Specifications

| | |
|-------------------------------|---|
| Building Size: | ±5,850 SF |
| Lot Size: | ±0.85 AC |
| Year Built: | 2001 |
| Tenancy: | Single or Multi |
| Zoning: | M-1 |
| Clear Height: | 18' |
| Loading: | Two Drive-In Doors |
| Parking: | 8 striped spaces with additional parking on north curb adjacent to loading |
| Occupancy: | Available Q1, 2026 |
| Operating Expenses: (2025) | RE TAXES: \$1.97 PSF INS: \$0.86 PSF CAM: Self-Performed |
| Legal Description: | SOUTH PORT BUSINESS PARK 1ST PLAT LOTS 1-18 & TRACT A---LOT 4 (EX PT IN RD) |

For more information:

Christian Wead
816.412.8472
cwead@blockllc.com

1324-1328 SW Market Street

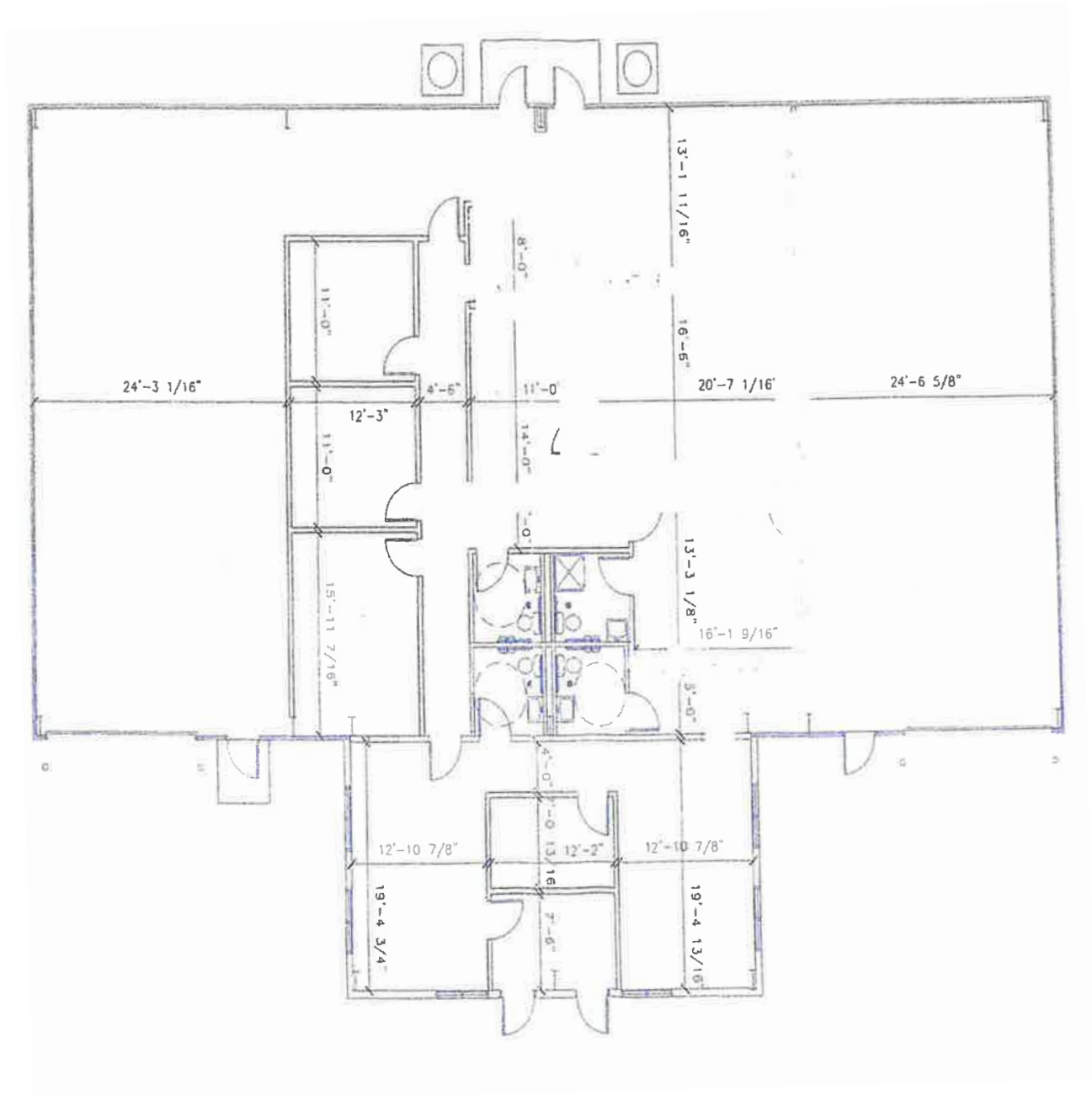
Less's Summit, Missouri 64081

For Lease

Property Photos



Exhibit A Floor Plan





1324-1328 SW Market Street

Less's Summit, Missouri 64081

For Lease



For more information:

Christian Wead
816.412.8472
cwead@blockllc.com