

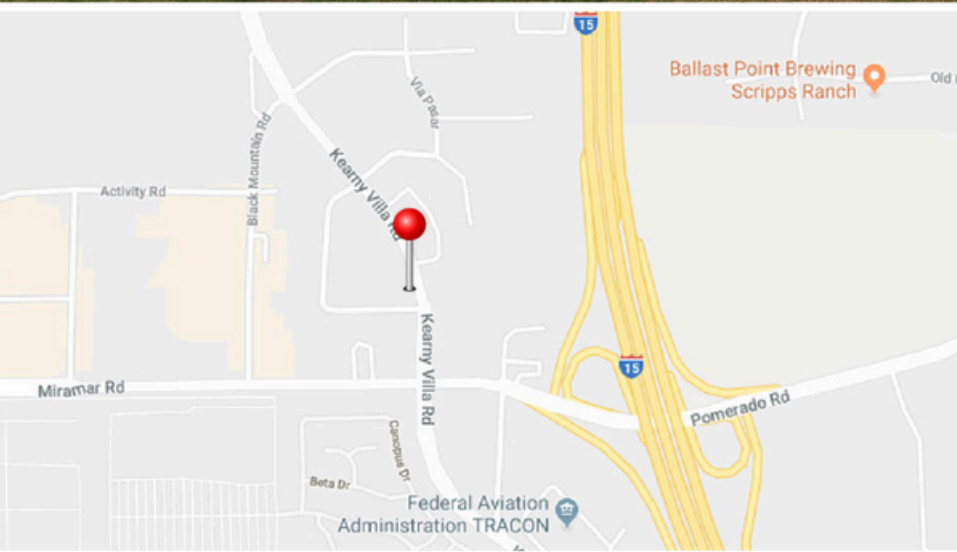
9474 KVR



FOR LEASE
Office Space

9474 Kearny Villa Road | San Diego, CA 92126

Property Description



Address	9474 Kearny Villa Road San Diego, CA 92126
Building Type	Office Building
Land Area	1.07 AC
Building Size	±17,124 SF
Parking	±3.62/1000 SF
Signage	Building Signage & Monument Signage
Stories	2
Access	Elevator and Multiple Stairways
Freeway Access	2 Blocks from I-15, Excellent FWY access
Electric	Separate Electric Meters
Location	The space is very unique offering an extensive glass line with operable windows. The building is centrally located on the corner of Kearny Villa Rd. & Tierra Grande St. one block off Miramar Rd.

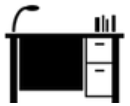
Office Space FOR LEASE

Suite 215

SUITE 215 | ±1,653 SF



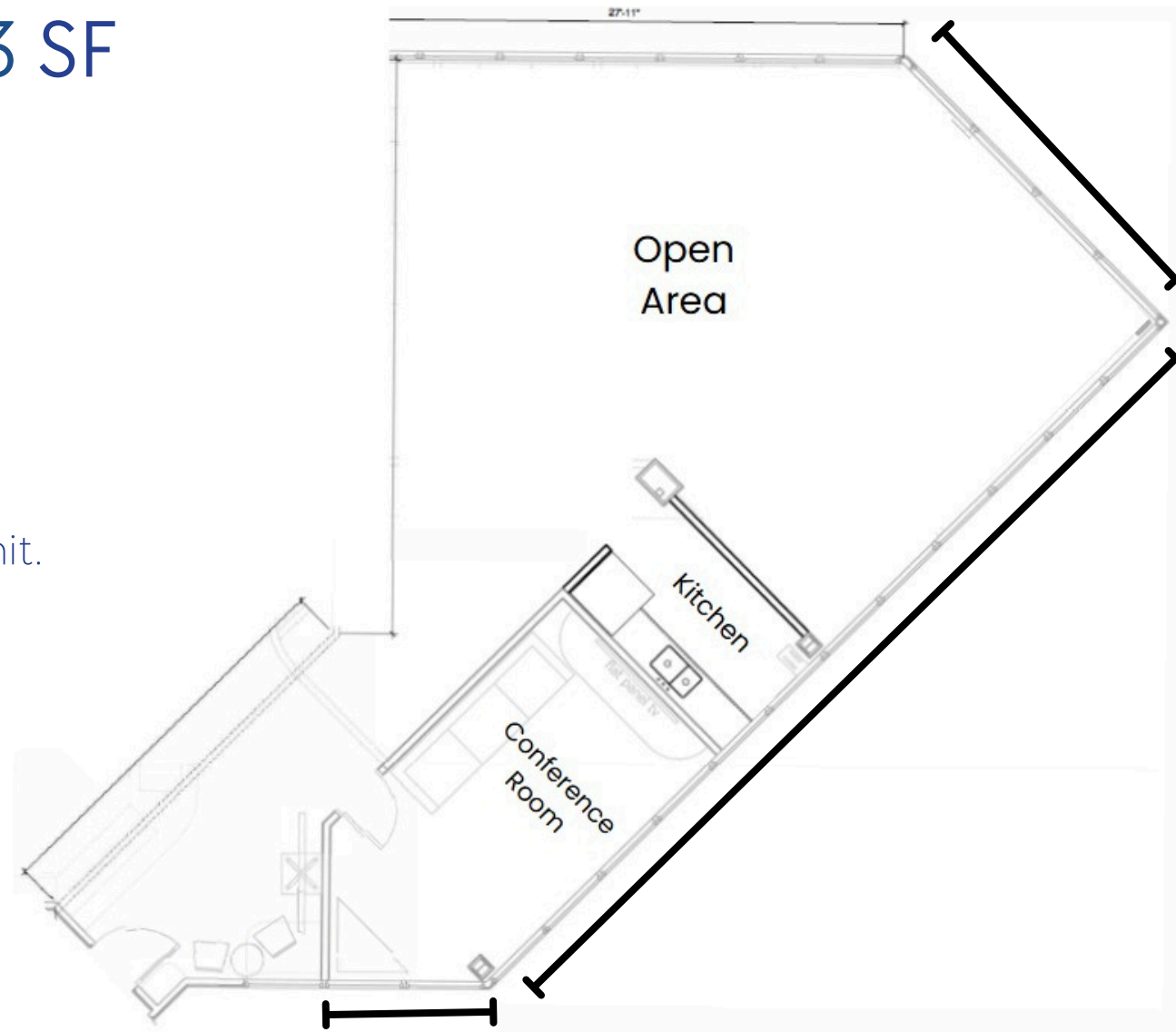
\$3,223 gross / \$1.95/SF



Window Lined Corner Unit.
Windows are operable.



Available Now



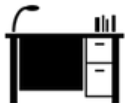
Office Space FOR LEASE

Suite 105

SUITE 105 | ±748 SF



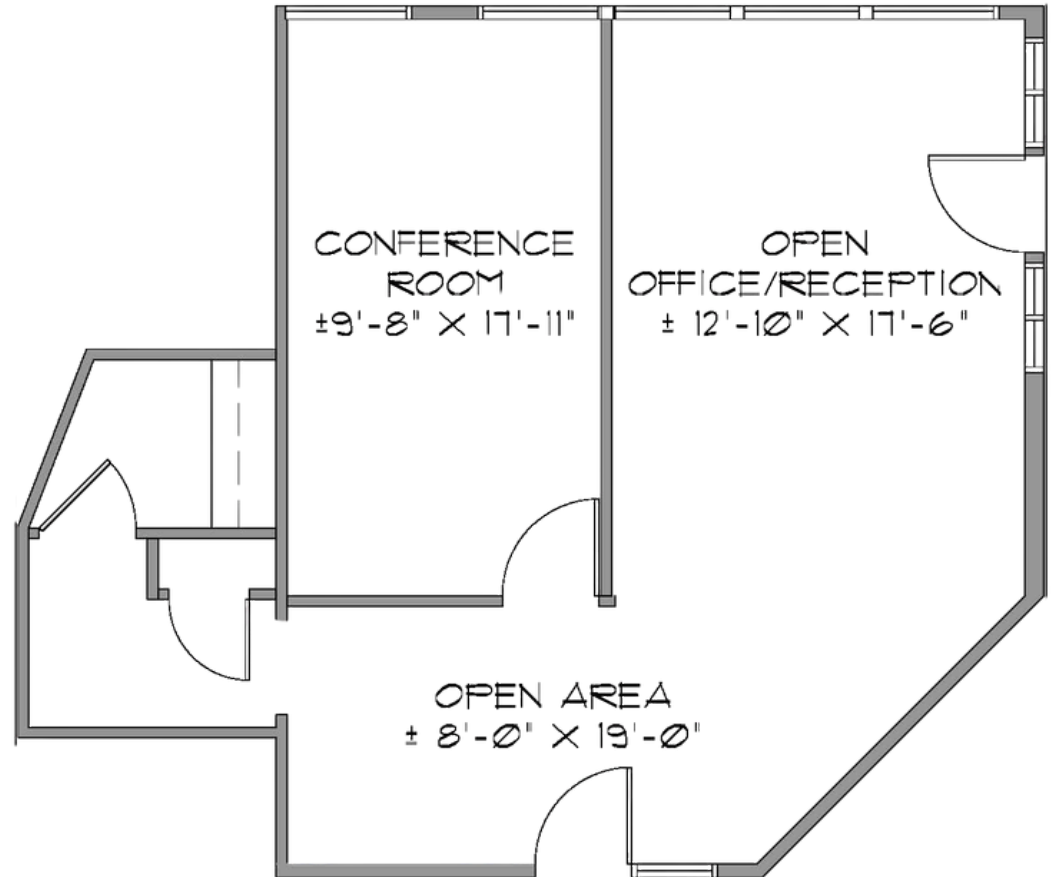
\$1.95/SF, 748 Sq. Ft.



Window Lined Corner Unit.
Windows are operable.



Available Now



9474 KVR

FOR MORE
INFORMATION PLEASE
CONTACT

--

Mark Silverman

Executive Vice President, SIOR
619.857.2813
msilverman@naisandiego.com

NAI San Diego

9820 Willow Creek Road, Suite 100
San Diego, CA 92131 619.497.2255



NO WARRANTY OR REPRESENTATION, EXPRESS OR IMPLIED, IS MADE AS TO THE ACCURACY OF THE INFORMATION CONTAINED HEREIN, AND THE SAME IS SUBMITTED SUBJECT TO ERRORS, OMISSIONS, CHANGE OF PRICE, RENTAL OR OTHER CONDITIONS, PRIOR SALE, LEASE OR FINANCING, OR WITHDRAWAL WITHOUT NOTICE, AND OF ANY SPECIAL LISTING CONDITIONS IMPOSED BY OUR PRINCIPALS NO WARRANTIES OR REPRESENTATIONS ARE MADE AS TO THE CONDITION OF THE PROPERTY OR ANY HAZARDS CONTAINED THEREIN ARE ANY TO BE IMPLIED.