

Property Details

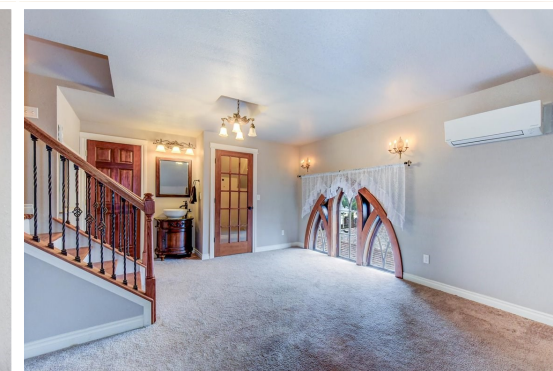
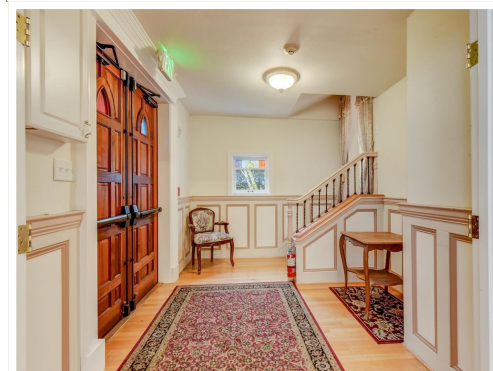
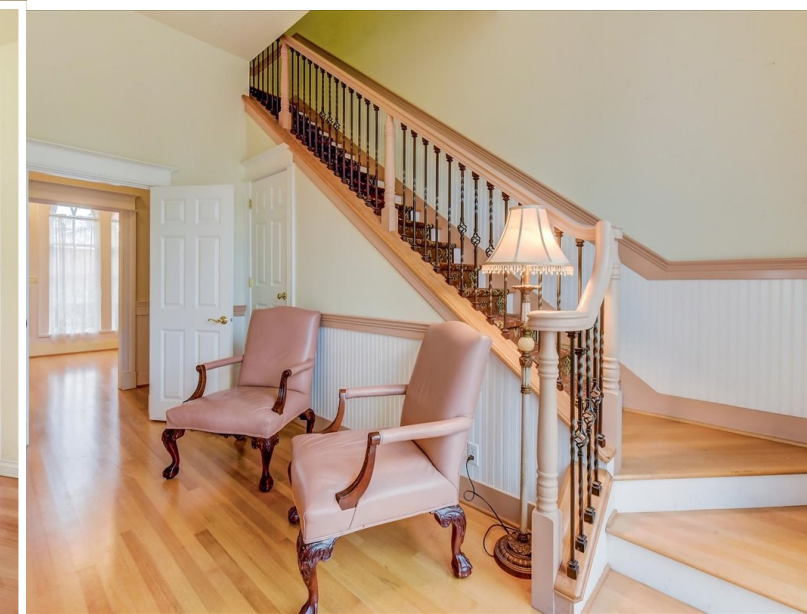
Residential building

3 bedrooms
 Primary on the main floor
 Custom closet organizer
 2 updated bathrooms
 Updated kitchen

Hardwood floors
 Ornate hardwood features
 2 fireplaces
 Slate patios with koi ponds

Event portion

Hand finished doors
 Beautiful hardwood floors
 Hidden hall and extra room with sound proofing
 Large dining area
 Chef's kitchen
 Buffet & Bar area
 Sound recording studio
 Event room
 Sound booth



Built in 1891, this historic Victorian Manor is the oldest church building in Sumner and is located just two blocks from wonderful downtown Sumner. The Winsome Grace property underwent an extensive renovation, with updated finishes and elegant features throughout, including hardwood floors with hand cut inlays and traditional décor. The 5,830-square-foot commercial space, built for events, is perfect for large ceremonies and receptions in its auditorium, while the stunning Japanese garden with a koi pond is an intimate setting for smaller ceremonies. It also features a buffet and bar area. It could host weddings, religious events, or explore other uses like a daycare, senior care, yoga studio, or office space. The building has many extra rooms throughout with hidden access to some. Connected is a beautiful 2,670-square-foot residential 3-bedroom home. It has plenty of room for entertaining and a large kitchen and dining room.

School Information

- ◆ Sumner School District
- ◆ Daffodil Valley Elementary School
- ◆ Sumner Middle School
- ◆ Sumner Senior High School

Home Information

- 1 & 1/2 Story + Basement
- Year Built: 1891 & 1982
- Combined Space: 8,590 Sq Ft
- Lot Size: 7,200 Sq Ft

1313 Washington St | Sumner | WA | 98390

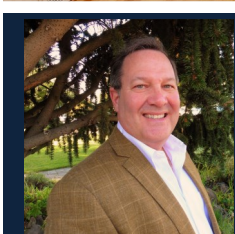
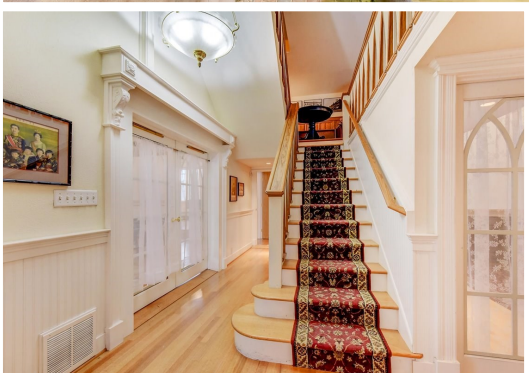


Historic Beautiful Winsome Place

1313 Washington St | Sumner | WA | 98390

MLS# 2448834

Offered at \$1,950,000



Tom Deacon
206-941-1383
Tom.deacon@cbrealty.com

By Appointment Only

Rickie Robinson
206-919-6434
Rickie.robinson@cbrealty.com




Tom Deacon
Properties Northwest
