

7151 RICHMOND ROAD SUITE 201 A & B FOR LEASE



PROPERTY DESCRIPTION

This Property has two side by side 1,200 sf units. They are is zoned for General Business for most any business use. The location is excellent, i.e.: high traffic count, center of James City County, well maintained business park located on Richmond Road, easy access to I64. These units are full service and turn key. Richmond Road is the areas largest growth corridor, and commuter corridor. Some use allowed in this zone are: general office/administration, adult day care, medical offices. Available immediately.

OFFERING SUMMARY

Lease Rate:	\$15.00 SF/yr (MG)
Available SF:	1,200 SF
Building Size:	2,400 SF

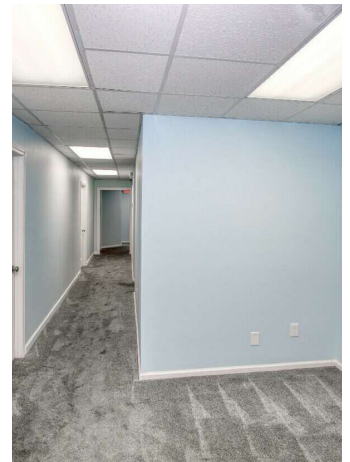
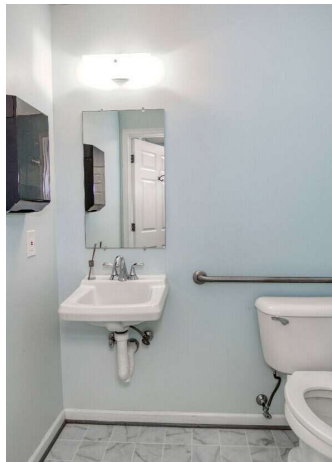
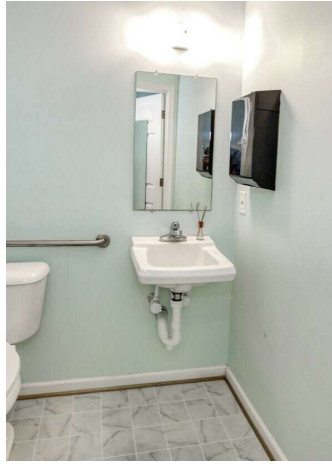
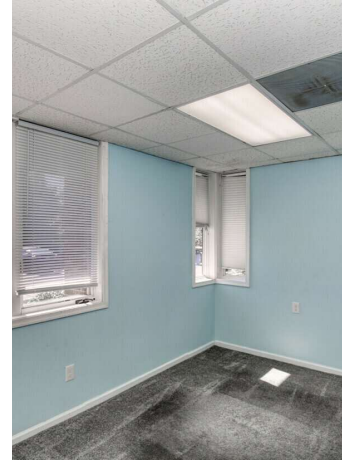
DEMOGRAPHICS	5 MILES	10 MILES	15 MILES
Total Households	16,235	44,066	61,531
Total Population	39,185	111,355	156,108
Average HH Income	\$113,891	\$123,099	\$121,468

Douglas Kendall
(757) 803-0836



**COLDWELL BANKER
COMMERCIAL**
BROOKS REAL ESTATE

7151 RICHMOND ROAD SUITE 201 A & B FOR LEASE



Douglas Kendall
(757) 803-0836

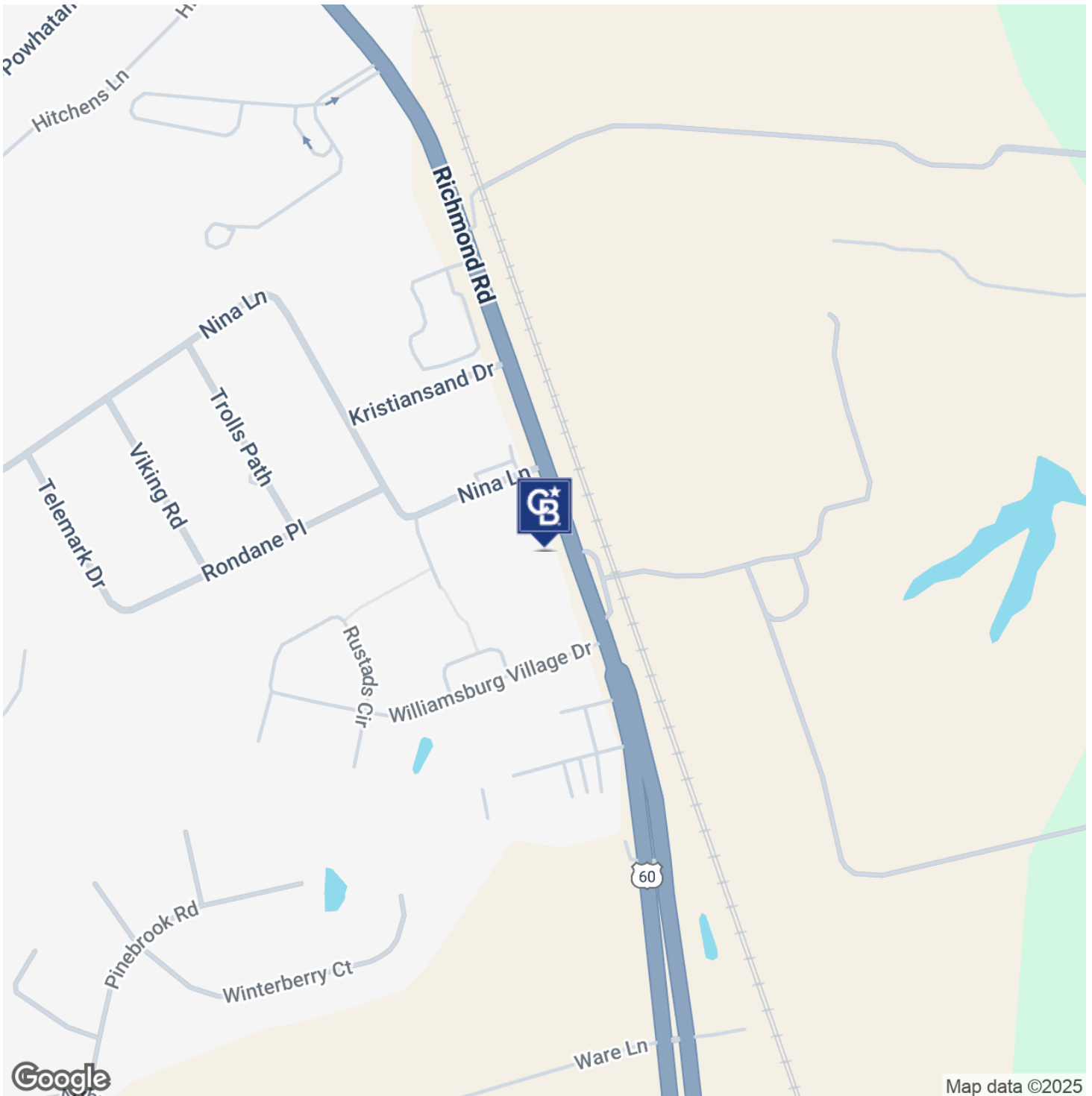


**COLDWELL BANKER
COMMERCIAL**
BROOKS REAL ESTATE

LEASE

7151 RICHMOND ROAD, STE 201 A & B

7151 Richmond Road, Ste 201 A & B Williamsburg, VA 23188

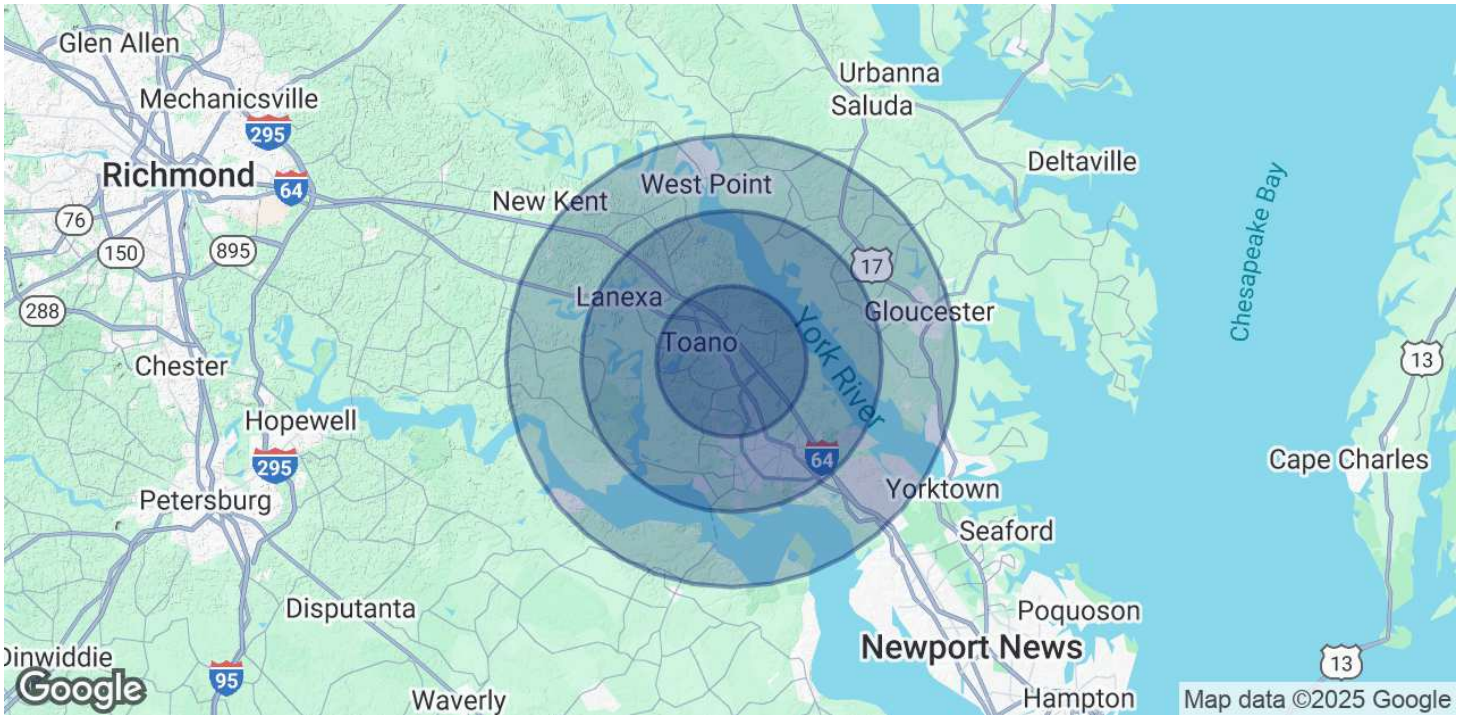


Douglas Kendall
(757) 803-0836



**COLDWELL BANKER
COMMERCIAL**
BROOKS REAL ESTATE

7151 RICHMOND ROAD SUITE 201 A & B FOR LEASE



POPULATION

Total Population

Average Age

5 MILES

39,185

46

10 MILES

111,355

45

15 MILES

156,108

44

HOUSEHOLDS & INCOME

Total Households

of Persons per HH

Average HH Income

Average House Value

5 MILES

16,235

2.4

\$113,891

\$459,798

10 MILES

44,066

2.5

\$123,099

\$494,287

15 MILES

61,531

2.5

\$121,468

\$462,255

Demographics data derived from AlphaMap

Douglas Kendall
(757) 803-0836



**COLDWELL BANKER
COMMERCIAL**
BROOKS REAL ESTATE