



± 15,017 SF AVAILABLE FOR LEASE

CREATIVE INDUSTRIAL SPACE

1610 E. ORANGETHORPE AVE | FULLERTON | CA

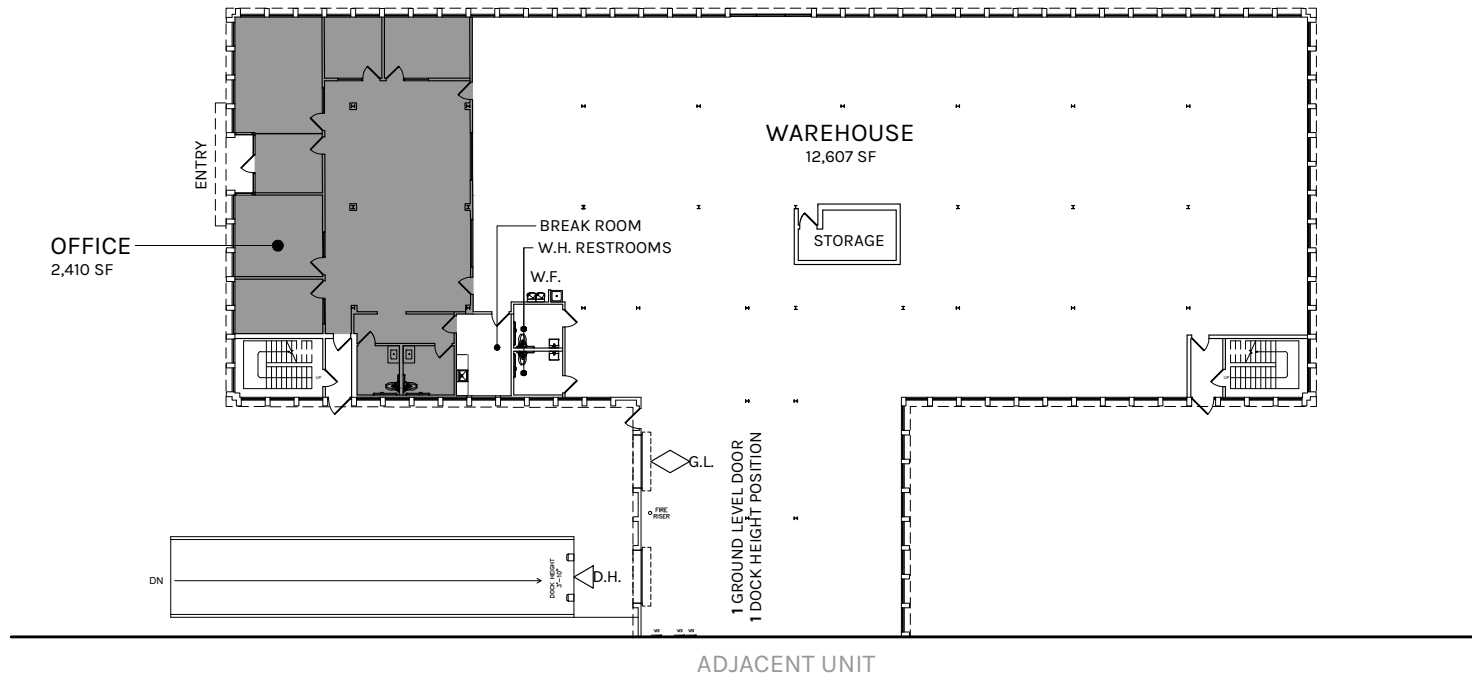




Property Highlights

- ± 15,017 square foot part of a larger industrial project
- Immediate access to 91 & 57 freeways
- Major street frontage on Orangethorpe
- ± 2,410 square feet of office space
- 1 dock high loading door
- 1 ground level loading door
- 12' warehouse clearance
- 500AMP - 277/480V (Tenant to Verify)



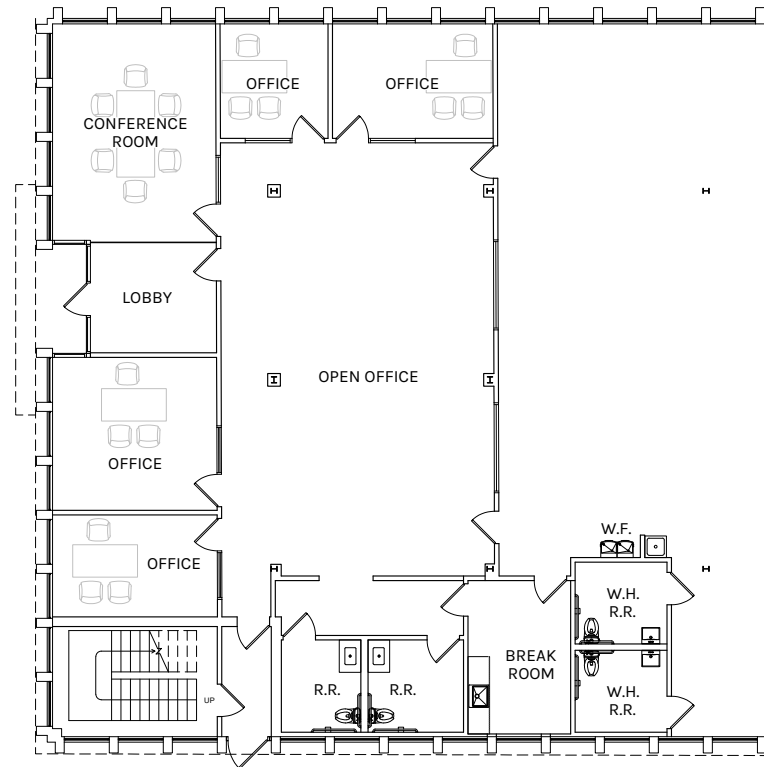


WAREHOUSE
12,607 SF

OFFICE
2,410 SF

TOTAL
15,017 SF

PLAN LAYOUT SUBJECT TO FIELD CONDITIONS AND MAY DIFFER FROM PLAN AS SHOWN. ALL INFORMATION PRESENTED ON THIS DRAWING IS PRESUMED TO BE ACCURATE, HOWEVER TENANT SHOULD VERIFY PERTINENT INFORMATION PRIOR TO COMMITTING TO A LEASE. ANY FURNITURE OR APPLIANCES SHOWN ON PLAN ARE FOR CONCEPT ONLY AND WILL BE TENANT PROVIDED.



OFFICE
2,410 SF

PLAN LAYOUT SUBJECT TO FIELD CONDITIONS AND MAY DIFFER FROM PLAN AS SHOWN. ALL INFORMATION PRESENTED ON THIS DRAWING IS PRESUMED TO BE ACCURATE, HOWEVER TENANT SHOULD VERIFY PERTINENT INFORMATION PRIOR TO COMMITTING TO A LEASE. ANY FURNITURE OR APPLIANCES SHOWN ON PLAN ARE FOR CONCEPT ONLY AND WILL BE TENANT PROVIDED.

Location

1610 E. ORANGETHORPE AVE



31.9 Miles
to Port of LA/Long
Beach

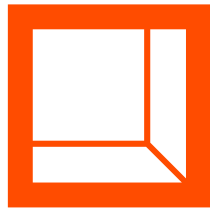
25.15 Miles
to Long Beach Airport
(LGB)

34.06 Miles
to Los Angeles
Airport (LAX)

16.11 Miles
to John Wayne Airport
(SNA)

2.02 Miles
to Nearest DHL

3.19 Miles
to Nearest UPS



**Rexford
Industrial**

Leasing Contact

RANDY ELLISON

Executive Director

949.930.4371

randy.ellison@cushwake.com

LIC # 01469586

BRETT LOCKWOOD

Director

949.930.2481

brett.lockwood@cushwake.com

LIC # 01495872

KYLE MCGILLEN

Senior Director

949.930.9229

kyle.mcgillen@cushwake.com

LIC # 01959388

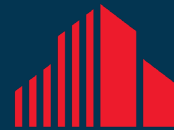
ANDREW RYAN

Associate

949.336.3484

andrew.ryan@cushwake.com

LIC # 02218585



**CUSHMAN &
WAKEFIELD**

Cushman & Wakefield

18111 Von Karman Avenue, Suite 1000

Irvine, CA 92612

949.474.4004

cushmanwakefield.com

Broker Disclaimer ©2025 Cushman & Wakefield. All rights reserved. The information contained in this communication is strictly confidential. This information has been obtained from sources believed to be reliable but has not been verified. NO WARRANTY OR REPRESENTATION, EXPRESS OR IMPLIED, IS MADE AS TO THE CONDITION OF THE PROPERTY (OR PROPERTIES) REFERENCED HEREIN OR AS TO THE ACCURACY OR COMPLETENESS OF THE INFORMATION CONTAINED HEREIN, AND SAME IS SUBMITTED SUBJECT TO ERRORS, OMISSIONS, CHANGE OF PRICE, RENTAL OR OTHER CONDITIONS, WITHDRAWAL WITHOUT NOTICE, AND TO ANY SPECIAL LISTING CONDITIONS IMPOSED BY THE PROPERTY OWNER(S). ANY PROJECTIONS, OPINIONS OR ESTIMATES ARE SUBJECT TO UNCERTAINTY AND DO NOT SIGNIFY CURRENT OR FUTURE PROPERTY PERFORMANCE. r