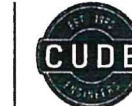


- LEGEND**
- POB = POINT OF BEGINNING  
OPR = OFFICIAL PUBLIC RECORDS OF LLANO COUNTY, TEXAS  
PR = PLAT RECORDS OF LLANO COUNTY, TEXAS  
VOL = VOLUME  
PG = PAGE  
DOC = DOCUMENT  
Δ = CALCULATED POINT  
○ = SET 1/2" IRON ROD WITH "CUDE" CAP  
● = FOUND 1/2" IRON ROD

- LINE LEGEND**
- 75' BUILDING SETBACK LINE  
--- 20' UTILITY EASEMENT  
--- DRAINAGE EASEMENT  
--- WATERWAY BUFFER ZONE EASEMENT  
--- 100 YEAR FLOOD PLAIN AREA



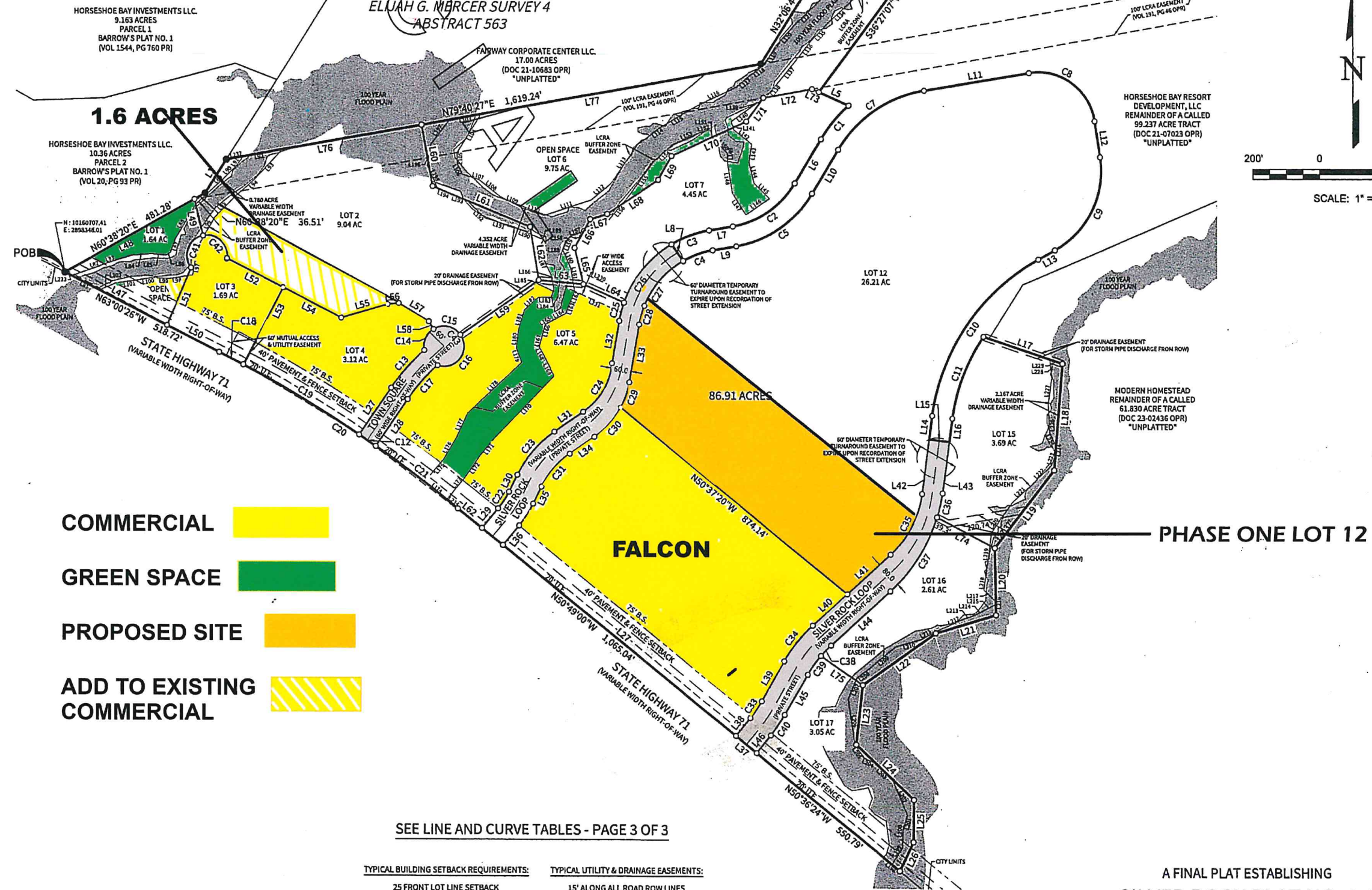
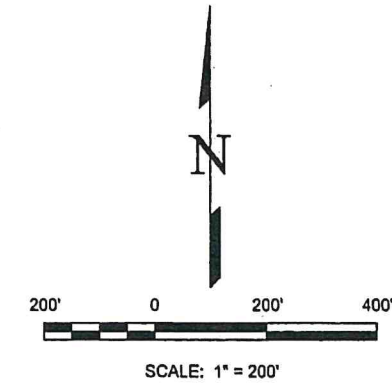
CUDE ENGINEERS  
4122 POND HILL RD. • SUITE 101  
SAN ANTONIO, TEXAS 78231  
TEL. 210.481.2951 • FAX 210.523.7112  
WWW.CUDEENGINEERS.COM  
REGISTERED ENGINEERING FIRM  
TBP# 0455 - TBP# 010048500

DATE: APRIL 2024  
2 OF 3

CONTACT: CHRIS WALTERSCHEIDT

PROJECT #4249.000.0

24 05950



A FINAL PLAT ESTABLISHING  
**SILVER ROCK PLAT NO. 1.1**  
86.91 ACRES OF LAND LOCATED IN THE ELIJAH G. MERCER SURVEY 4, ABSTRACT 563, LLANO COUNTY, TEXAS  
AND BEING A PORTION OF A CALLED 99.237 ACRE TRACT RECORDED IN DOCUMENT NO. 20-09078 OF THE  
OFFICIAL PUBLIC RECORDS, LLANO COUNTY, TEXAS, AND BEING A PORTION OF A CALLED 61.830 ACRE TRACT  
RECORDED IN DOCUMENT NO. 23-02436 OF THE OFFICIAL PUBLIC RECORDS, LLANO COUNTY, TEXAS